

Efficacy comparison of two methods for determining the position of the rebate edge (formed after MDF machining) during automatic monitoring of workpiece delamination

KATARZYNA ŚMIETAŃSKA, JAROSŁAW GÓRSKI

Department of Mechanical Processing of Wood, Faculty of Wood Technology, Warsaw University of Life Sciences – SGGW

Abstract: *Efficacy comparison of two methods for determining the position of the rebate edge (formed after machining) during automatic monitoring of workpiece delamination.* Delamination is one of the most common defects in the processing of wood-based materials. It has a huge impact on the quality of the final product. In order to determine the delamination indicators in a simple and reliable way, the automatic image processing method can be used (Śmietańska et al. 2020). Bator and Śmietańska (2019) proposed the special algorithm to estimate the straight line representing a milling edge. However, this algorithm is quite complicated. The aim of this article is to check whether the aforementioned (complicated) algorithmic way can be replaced by a much simpler idea – the precise manual positioning of the scanned sample on the scanner (using very simple device installed on the scanner). The special experimental research was carried out to compare the effectiveness of the two different methods. The straight line which represents the rebate edge identified by Bator and Śmietańska (2019) algorithm was usually accurate to 1 pixel (0.02 mm). The analogue line based on the assumption that the scanned samples were perfectly positioned on the scanner only sometimes fit just as well. At worst, the distance between these lines is 0.2 mm. Usually the distance did not exceed 0.16 mm but was significant and quite random. There was no statistically significant correlation between this parameter (D_{max}) and tool condition (VB). It means that sample were not perfect positioned. They were placed more or less in the same position because of imperfect stiffness of the frame installed on the scanner and human errors.

Keywords: delamination, MDF, milling, automatic quality monitoring, image processing

INTRODUCTION

Delamination is one of the most common defects in the processing of wood-based materials, including laminated MDF boards. Delamination is a phenomenon consisting in the loss of cohesion of individual layers of the material (e.g. laminate). The common cause can be cutting forces generated during machining. Delamination has a huge impact on the quality of the final product.

Delamination can be unambiguously (quantitatively) defined by the value of the delamination factor, which may take into account the width, diameter or area of the delamination zone (Romoli et al. 2008; Tsao et al. 2012). A delamination factor can be calculate, for example, using the area of delaminated zone on the elementary section - length of the cut (Szwajka et al. 2017), determine the average number of chips in 25 mm sections (Lemaster 2000) or using the maximum width of damage zone (Praveen 2013; Sreenivasulu 2013).

The condition of the workpiece edge is one of the most important criteria for assessing the product quality (Palanikumar et al. 2009; Śmietańska et al. 2020). Even a small surface defect can lead to the classification of the element as defective, reject it and thus increase the production cost. In order to determine the delamination indicators in a simple and reliable way, the automatic image processing method can be used (Śmietańska et al. 2020). A system based on this method, built of relatively easily accessible elements, would allow to automatically detect quality defects of the finished products and / or support the production process in order to achieve a high level of repeatability and quality. Automatic quality

monitoring allows for more effective use of materials, machines and human labor and guarantees high quality of production. Consequently, the safety, reliability and profitability of products increases.

According to Bator and Śmietańska (2019) as well as Śmietańska et al. (2020) for the precisely measurement the value of the delamination coefficient of a laminated MDF board of an image analysis method, it is necessary to:

- scanning a sample,
- taking adequate subimages (presenting one rebate edge),
- classifying pixels into pixels inside or outside the delamination zone for each subimage,
- computing an expected (theoretic) borderline between them,
- localizing of a line representing a edge of cutting,
- calculation geometric integral as the area of delamination.

The most difficult and important step of the procedure is determining the position of the edge of the workpiece in an extremely precise manner. Bator and Śmietańska (2019) proposed the special algorithm to estimate the straight line representing a milling edge. However, this algorithm is quite complicated. The main problem is a subtle difference between pixels in a milled groove area and those in a delaminated area. The second difficulty is that, even in cases when the delamination is clearly visible, the line could be deformed.

The aim of this article is to check whether the aforementioned (complicated) algorithmic way can be replaced by a much simpler idea – the precise manual positioning of the scanned sample on the scanner (using very simple device installed on the scanner). The special experimental research was carried out to answer this question.

MATERIAL AND METHODS

The workpieces were rebated using a machining centre CNC and knife cutter head in diameter 40mm with exchangeable carbide knives. The workpieces were elements measuring 240 mm x 190 mm made of 16-mm-thick laminated MDF board. During the experiment a rebate 12mm deep and 30 mm wide was milled (Fig.1). The cutting parameters were as follows: spindle speed – 10000 rpm and feed rate – 2 m/min. During the experiment the tool was gradually worn in a way reflecting normal exploitation in real industrial conditions, i.e. during machining of various wood based materials. At some intervals, this exploitation was interrupted in order to measure the flank wear (VB). The standard workshop microscope (Mitutoyo TM-500) was used for this purpose. The samples made of laminated MDF were rebated with 10 different tool wear states (VB = 0 mm; 0.07 mm; 0.10 mm; 0.14 mm; 0.21 mm; 0.23 mm; 0.24 mm; 0.31 mm; 0.33 mm; 0.34 mm). Generally the series of 50 experimental workpieces were rebated (5 pieces for the same tool wear state).

Next the all workpieces were scanned at 1200 dpi by means of standard office scanner. The special device (simple frame) was developed and installed on the scanner to enable quick and relatively precise manual positioning of the scanned sample. Theoretically, the rebate edge of each sample should be at the same location on the scanner. This fact enables immediate localization of the rebate edge always in the same place on the bitmap (without any analyzing the pixels). It turned out, that (assuming the frame for setting the workpiece works absolutely reliably) the distance between the milling edge and the up edge of the bitmap should be 116 pixels. Both edges should be parallel of course. Finally all scans were analyzed. In this way the efficacy of the most simple method for automatic determining the position of the rebate edge was tested and compared with the efficacy of algorithm proposed by Bator and Śmietańska (2019).

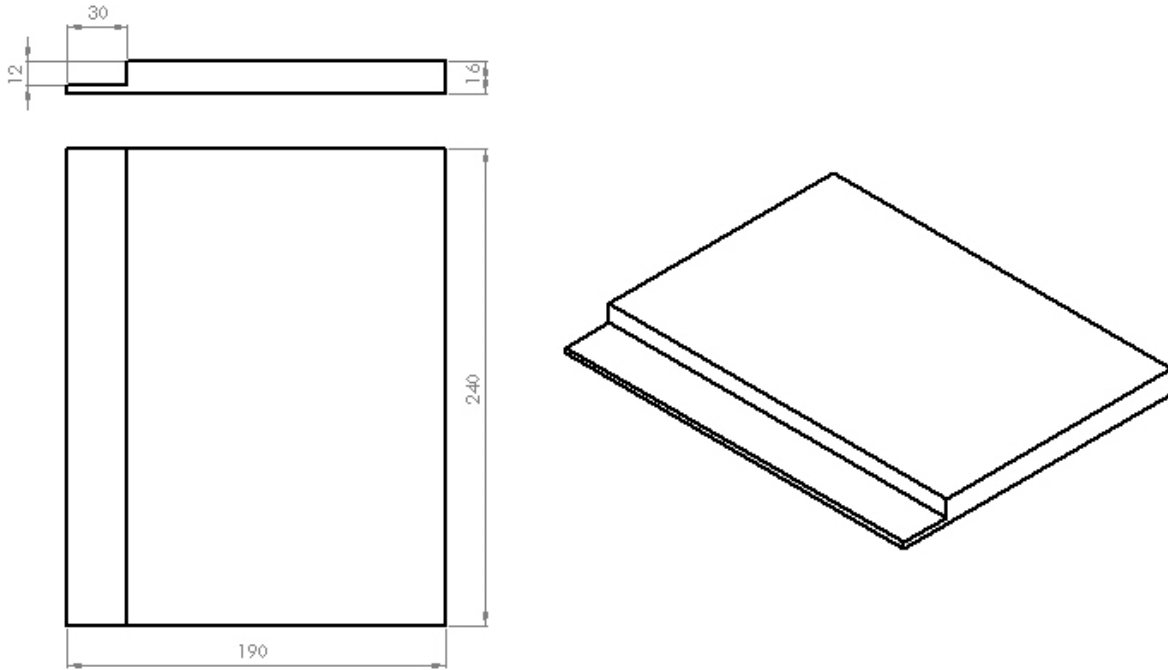


Figure 1. The final shape of the rebated workpiece

RESULTS

In order to compare the effectiveness of the two different methods, 3 lines were automatically drawn on each scan (Fig. 2a, b):

1. line A - straight line which represents the rebate edge identified by Bator and Śmietańska (2019) algorithm;
2. line B - straight line located 116 pixels away from the up edge of the photo
3. line C - polyline which represents the border of the delamination zone.

It turned out that line A was usually accurate to 1 pixel. Sometimes line A and B lines coincided with each other (Fig.2b) but usually they were nonparallel and spaced lines (Fig.2a). The maximum distance (D_{max}) between these lines were determined for all scans. The effect of tool wear (VB) on the distance between line A and line B (D_{max}) is shown in Fig.3. There was no statistically significant correlation between VB and D_{max} . It turned out that there was a notable and absolutely random distance between both compared lines (A and B). Sometimes the distance was 0.2 mm (unfortunately). Most often D_{max} did not exceed 0.16 mm but it was too big anyway. Probably the most important reasons of this significant unconformity were an imperfect stiffness of the frame installed on the scanner and human errors.

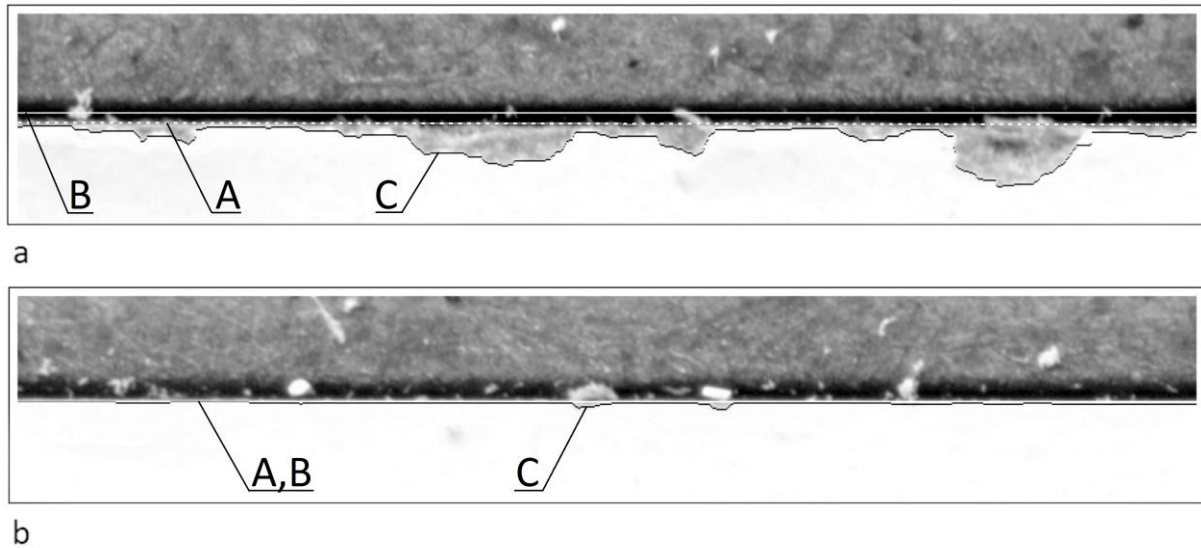


Figure 2. Examples of images analyzed to compare the effectiveness of the two different methods for automatic determining the position of the rebate edge. More detailed description in the text

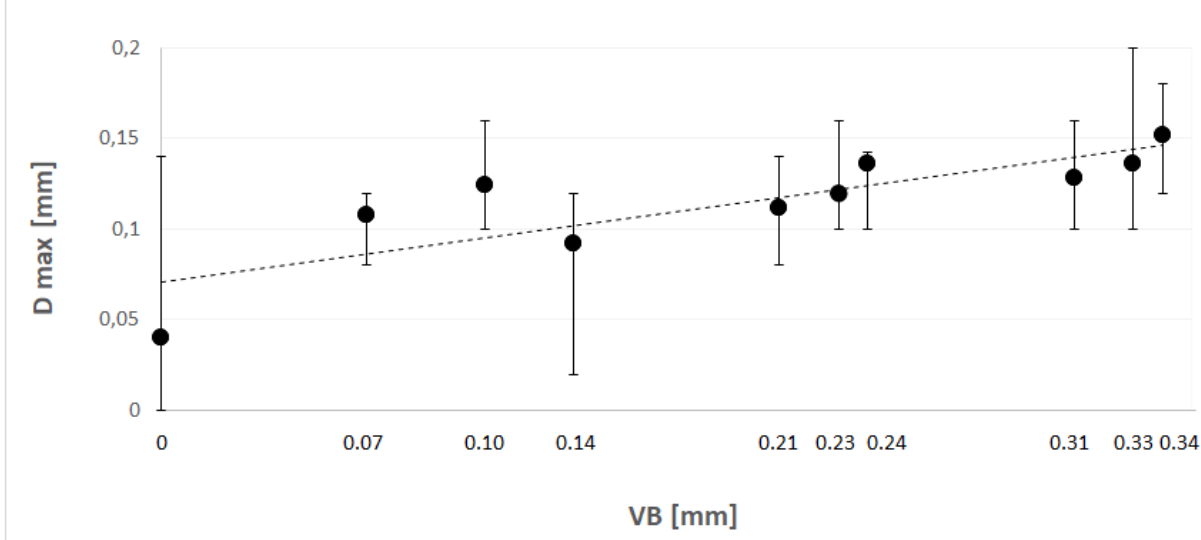


Figure 3. The effect of tool wear (VB) on the maximum distance between line A and line B (Dmax). More detailed description in the text

CONCLUSIONS

The straight line which represents the rebate edge identified by Bator and Śmietańska (2019) algorithm was usually accurate to 1 pixel. The analogue line based on the assumption that the scanned samples were perfectly positioned on the scanner only sometimes fit just as well. At worst, the distance between these lines is 0.2 mm. Usually the distance did not exceed 0.16 mm but was significant and quite random. There was no statistically significant correlation between this parameter (Dmax) and tool condition (VB). It means that sample were not perfect positioned. They were placed more or less in the same position because of imperfect stiffness of the frame installed on the scanner and human errors.

REFERENCES

1. BATOR M., ŚMIETAŃSKA K., 2019: Constraint-based algorithm to estimate the line of a milling edge. *Machine Graphics and Vision* 28(1/4): 59-67
2. LEMASTER R. L., LU L., JACKSON S., 2000: The use of process monitoring techniques on a CNC wood router. Part 2. Use of a vibration accelerometer to monitor tool wear and workpiece quality. *Forest Products Journal* 50(9): 59-64
3. PALANIKUMAR K., PRAKASH S., MANOHARAN N., 2009: Experimental investigation and analysis on delamination in drilling of wood composite medium density fiber boards. *Materials and Manufacturing Processes* 24(12): 1341-1348
4. PRAVEN R. P., ELAYA P., 2013: A prediction of delamination in end milling of GFRP using ANSYS. *East Asian Science Technology and Society an International Journal AIJSTPME* 6(2): 39-46
5. ROMOLI L., DINI G., 2008: Experimental study on the influence of drill wear in CFRP drilling process. *Proceedings of: 6th CIRP International Conference on Intelligent Computation in Manufacturing Engineering, July 23-25 2008, Naples*: 145-149
6. SREENIVASULU R., 2013: Optimization of Surface Roughness and Delamination Damage of GFRP Composite Material in End Milling using Taguchi Design. *International Conference on Design and Manufacturing DESIGN AND MANUFACTURING, IConDM 2013, Procedia Engineering* 64: 785-794
7. SZWAJKA K., TRZEPIECIŃSKI T., 2017: The influence of machining parameters and tool wear on the delamination process during milling of melamine-faced chipboard. *Drewno* 60: 118- 31. DOI: 10.12841/wood.1644-3985.189.09
8. ŚMIETANSKA K., PODZIEWSKI P., BATOR M., GÓRSKI J., 2020: Automated monitoring of delamination factor during up (conventional) and down (climb) milling of melamine-faced MDF using image processing methods. *European Journal of Wood and Wood Products* 78: 613-615. DOI: 10.1007/s00107-020-01518-9
9. TSAO C. C., KUO K. L., HSU I. C., 2012: Evaluation of a novel approach to a delamination factor after drilling composite laminates using a core-saw drill. *The International Journal of Advanced Manufacturing Technology* 59(3): 617-622

Streszczenie: *Porównanie efektywności dwóch metod wyznaczania położenia krawędzi wręgu (powstałego po frezowaniu MDF) podczas automatycznej oceny delaminacji przedmiotu obrabianego. Delaminacja jest jedną z najczęściej występujących wad powstałych w wyniku obróbki skrawaniem materiałów drewnopochodnych. Stan krawędzi jest niezwykle ważnym kryterium oceny jakości wyrobu finalnego. W celu prostego i rzetelnego określenia wskaźnika delaminacji doskonałym rozwiązaniem wydaje się zastosowanie metody automatycznego przetwarzania obrazu (Śmietańska i in.2020). Bator i Śmietańska (2019) zaproponowali specjalny, jednak dość skomplikowany, algorytm pozwalający na estymację prostej reprezentującej krawędź wręgu powstałego w procesie frezowania.*

Celem artykułu jest sprawdzenie, czy powyższą metodę (z zastosowaniem algorytmu) można zastąpić znacznie prostszym rozwiązaniem - precyzyjnym ręcznym pozycjonowaniem skanowanej próbki na skanerze (przy pomocy specjalnego nieskomplikowanego przyrządu). Aby porównać skuteczność dwóch metody przeprowadzono badania eksperymentalne. Linia prosta reprezentująca krawędź wręgu oszacowana z zastosowaniem algorytmu Batora i Śmietańskiej (2019) osiągała przeważnie dokładność 1 piksela (0,02mm). W przypadku linii analogowej opartej na założeniu, że zeskanowane próbki były idealnie umiejscowione na skanerze zaobserwowano znacznie mniejszą dokładność. W najgorszym przypadku różnica pomiędzy liniami wynosiła 0,2 mm (zwykle nie przekraczała 0,16 mm). Nie zaobserwowano

także istotnej statystycznie korelacji między parametrem D_{max} , a stopniem zużycia narzędzia VB. Ręczna metoda okazała się zdecydowanie mniej precyzyjna. Za przyczynę tego można uznać niewystarczającą sztywność przyrządu do pozycjonowania próbki na skanerze oraz błędy ludzkie.

Coresponding author:

Katarzyna Śmietańska
ul. Nowoursynowska 159.
02-787 Warszawa
email: katarzyna_laszewicz@sggw.edu.pl