

computer simulation; transport; environment;

Malgorzata ŁATUSZYŃSKA*

University of Szczecin
Faculty of Economics and Management
ul. Mickiewicza 64, 71-101 Szczecin, Poland

Roma STRULAK-WÓJCIKIEWICZ

West Pomeranian University of Technology Szczecin
Faculty of Maritime Technology and Transport
al. Piastów 17, 70-310 Szczecin, Poland

*Corresponding author. E-mail: mlat@wneiz.pl

COMPUTER SIMULATION OF TRANSPORT IMPACT ON ENVIRONMENT

Summary. The paper presents a computer simulation as an effective method for testing the impact of transport on the environment. It shows the concept of a simulation model that allows the integration of different approaches and methods used in the discussed context, pointing to the System Dynamics (SD) as a suitable technique to formalize the model. Simulation modeling in the SD convention allows for the simultaneous estimation of all impacts of transport on the environment in the dynamic approach.

SYMULACJA KOMPUTEROWA WPŁYWU TRANSPORTU NA ŚRODOWISKO NATURALNE

Streszczenie. Artykuł przedstawia symulację komputerową jako efektywną metodę badania wpływu transportu na środowisko naturalne. Zaprezentowano w nim koncepcję modelu symulacyjnego pozwalającego na integrację różnych podejść i metod stosowanych w omawianym kontekście, wskazując na Dynamikę Systemową jako odpowiednią technikę formalizacji modelu. Modelowanie symulacyjne w konwencji systemowo-dynamicznej umożliwia jednocześnie szacowanie wszystkich skutków wywoływanych przez inwestycje transportowe w środowisku naturalnym w ujęciu dynamicznym.

1. INTRODUCTION

Transport is one of the vital factors determining the regional, national as well as the world's economic growth. Efficient transportation system stimulates economies to grow, while at the same time its inefficient management can significantly hinder their capacity to flourish [41, p.7]. Traditional approach to transportation problems focuses first of all on the economics of transport systems and ignores their impact on the environment. Most methods which find application in the transport system analysis originate from such an approach. In the second half of the 20th century the world saw the unprecedented development of this sector, hence it has become necessary to see the problem from a more modern angle [11]. Not only has it dramatically affected the balance in natural environment of

humans causing not only serious pollution of air, water and soil or increased noise levels but it has also deformed natural topography, devastated vegetation and endangered numerous animal species¹.

The gravity of transport related threats forced decision makers to take them into consideration in analyses that precede transport investment planning. There are diverse methods that are used to assess transport environmental impact: from simple identification of individual impacts to complex methods of predicting the investment effects on a given element of local environment². A large number of criteria and their various implications that must be taken into account make the process very difficult. Some of the popular methods do not address many essential factors, or they are not accurate enough. Another important methodological problem is how to integrate the assessments made by different experts who use varying methods and how to present them so that they can be comprehensible to all the concerned parties (such as investors, decision makers and local communities).

In a modern approach to transport-related problems it is recommended to take into equal consideration the interrelated effects of the transport growth viewed from the perspective of its dynamics. As a result, the analyzed system becomes particularly complex thus coercing the application of specific research methods. In the authors' opinion the appropriate tool to test the environmental effects of transport is a simulation model built in the convention of system dynamics. Such a model provides complex information about all the predictable impacts in dynamic and spatial perspective [24, p. 60] and makes it possible to reflect the secondary effects resulting from the inner dynamics of the analyzed system.

The purpose of this article is to present the concept of a simulation model designed to test the transport environmental impact and built in the convention of system dynamics.

2. SYSTEM DYNAMICS SIMULATION IN THE ANALYSIS OF TRANSPORT PROBLEMS

Computer simulation has been for long now an elementary method to study particularly complex systems. To put it simply, it is a technique which can be used to imitate the operation of the whole system or to copy a certain situation by means of computer programs. The main goal of the simulation is to provide information about a real or projected system. This information can be used in the process of decision making concerning the given system. The computer simulation is a numerical method applied to experiment on certain types of mathematical models, which describe the long term performance of a complex system by means of a computer [37, p. 21]. This method has an advantage over the traditional methods applied in transport system analyses because it gives the opportunity to examine complicated processes taking place in the system and its environment both in time and space ([33, p. 54], [17, p. 88], [8]). The good points of the computer simulation make it attractive for those who tackle diverse problems of great complexity (see: [33, p. 254], [17, p. 88], [28], [8]).

A popular method of simulation modeling applied mainly to analyze problems that are poorly structured with many interlocking relationships among its components is the System Dynamics. It is a simulation technique developed by J.W. Forrester and his associates from the Massachusetts Institute of Technology (MIT) at the end of the 1950s and the beginning of the 1960 ([16], [6]). Essentially, Forrester proposed to think of the system dynamics in terms of feedback. According to R. G. Coyle's definition System Dynamics deals with the behavior of systems over time in order to describe: (1) the system through qualitative and quantitative models, (2) the reaction to feedback, and (3) to design appropriate feedbacks and steering methods [10]. System Dynamics gives the chance and basis to understand and examine all the mutual interrelations within the systems as well as to determine the character of changes in these systems over time. It has been founded on theories from several fields of science, hence it enables us to apply different modes of operation (including conventional methods of analysis) into a single complex system of methods.

¹ Transport has plenty of negative effects on the environment. We can divide them not only according to types, but also by their duration, geographical range and mutual interrelations. See more: [29], [48].

² See more about the methods: [25].

The construction of a system dynamics model is mainly based on identifying mutual causation among the individual elements of the real system. When building a model we use our intuition, the experts' knowledge and experience, the theory of the discipline relating to our problem and, finally, on data coming from observing the system behavior in the past.

System Dynamics is a popular practice, which is confirmed by a large number of reports presented at multi-panel international conferences that have been held annually for over 30 years by the System Dynamics Society³. SD has been successfully applied when studying problems related to natural environment or transport which requires the combination of approaches and methods (see: [20], [19], [5], [25, p. 101-117], [27], [34], [31], [23, p. 879-888], [15], [46], [9]). The method has also been employed in research projects dealing with transport, e.g. SCENARIOS [42], SCENES [43] or ASTRA [3], [4], and in integrated evaluations of various transport policies [49], [22], [44], [45], [4].

3. GENERAL IDEA OF A SYSTEM DYNAMICS MODEL ASSESING THE IMPACT OF TRANSPORT ON ENVIRONMENT

The general structure of the proposed simulation model to assess the environmental impact of transport is presented in Figure 1 and consists of three basic submodels:

- the submodel of traffic forecast,
- the submodel of environmental effects,
- the submodel of transport network.

In order to improve the effectiveness of the model construction the researchers often divide a complex problem into smaller parts [50], which are called submodels in this paper. They are parts of the model referring to individual segments of the simulated reality.

The submodels of the proposed simulation model are made of modules that not only are related with the environmental effects, but also help estimate on a long-term basis future traffic on the elements of road infrastructure that are being built or renovated.

The modules referring to natural environment use data coming directly from the modules responsible for e.g. average vehicle speed, descriptive elements of the transport network, etc. which, in turn, require information computed in other modules as well as information about planned investment variants included in a separate module (see the interrelations in Fig. 1).

Each of the modules is presented by means of a suitable graphic symbol. Graphic symbols depend on a tool, by means of which the module has been created. In this paper the authors decided to apply Vensim DSS simulation package, which has been specifically created for the purpose of modeling in the SD convention.

The proposed model is constructed according to the concept of modular modeling which is based on the assumption that system modeling means creating „the model of models”, i.e. a heterogeneous structure consisting of many repeatable structural blocks called *modules*⁴. Modules are small repeatable blocks written in a system-dynamic convention that reflect some parts of the real system, which have been considered elementary. The blocks contain the elements of the system-dynamic notation (levels, streams, ancillary variables, parameters) and the instructions of a formal simulation language (DYNAMO, VENSIM, Powersim, IThink etc.). Therefore, the module can be identified as the simplest possible simulation model, i.e. the model which reproduces single elementary actions distinguishable in the real system on the lowest of the examined hierarchy levels. The modules are the building material for constructing the target model, but they can be models themselves. In addition, the modules happen to be reproduced many times in one simulation model. The set of modules used to constructing the model can expand as new interrelations in the observation base are being found and the theory on the examined system is being developed.

³ See more://www.systemdynamics.org/.

⁴ See more on modular modeling in e.g.: [26]; [28].

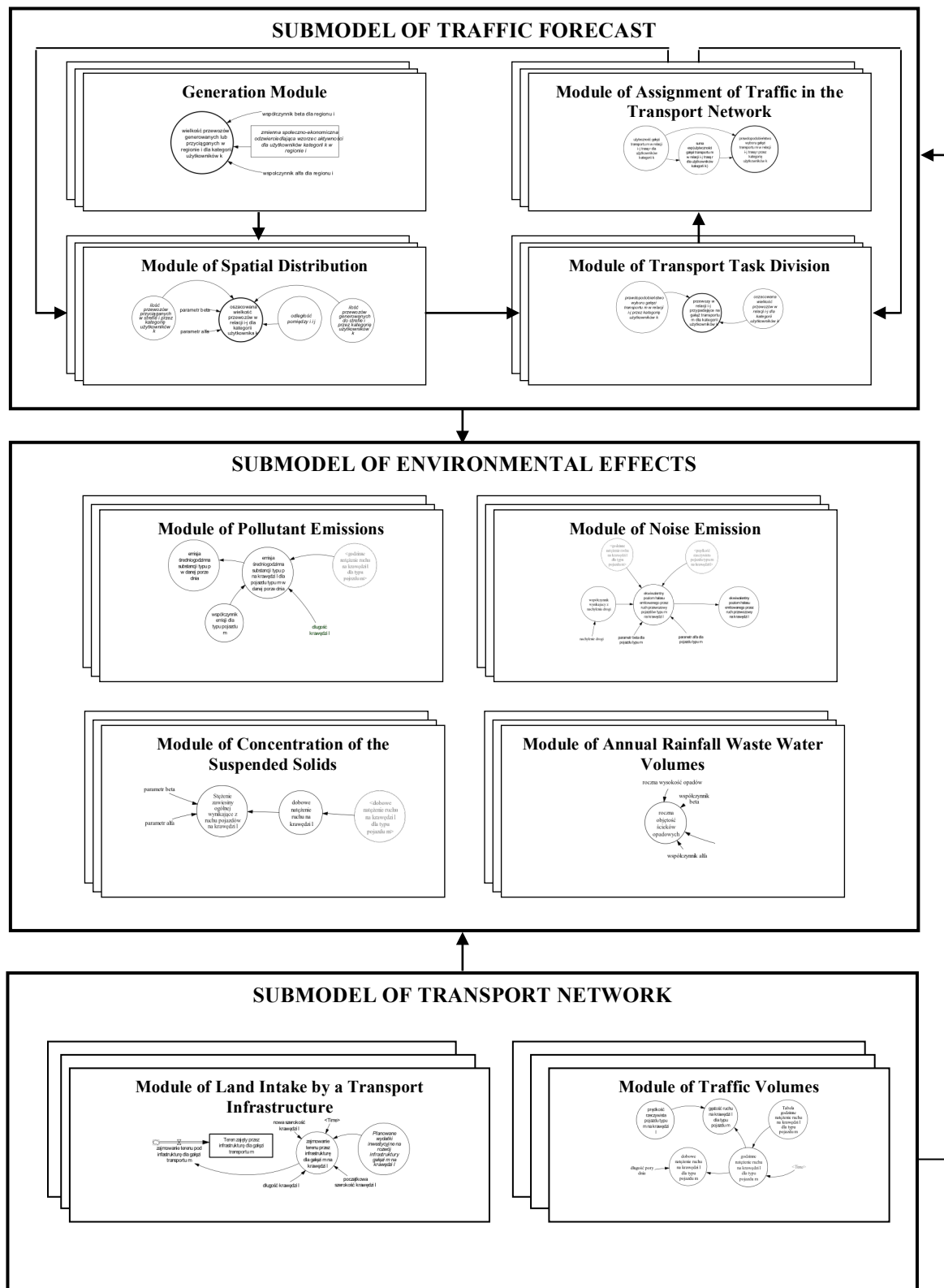


Fig. 1. The general structure of the simulation model assessing the impact of transport on the environment with module examples

Rys. 1. Ogólna struktura modelu symulacyjnego do oceny wpływu transportu na środowisko naturalne z przykładowymi modułami

With regard to its subject matter the concept of modular modeling the grounds for its application can be found in the analysis of the existing transport system models built in the convention of System Dynamics⁵. Additionally, this concept makes constructing and modifying the model quick and easy, hence more efficient and effective due to the opportunity to use ready-made modules that describe previously verified behavior patterns.

4. EXEMPLIFICATION OF THE MODEL FOR A CASE STUDY

In order to illustrate the applicability of the presented concept for the study into the environmental impact of transport the authors created a simulation model for a specific case study, i.e. for a ring road being a segment of the route 10 circling Stargard Szczeciński. The investment included the construction of the ring road, redevelopment of the local road network and the development of facilities reducing the negative environmental impact of the investment. The analyses took into account two options: (1) the Northern Option – the road would circle the town on the north (km 40+402.19 to km 54+240), (2) the Southern Option (recommended by the investor) – from the Lipnik junction to the Święte junction (km 40+402.19 to km 53+920); and (3) the Zero Option leaving the situation unchanged. In accordance to the *Act on Environmental Protection* and the Section 2, item 1, point 29 of the Regulation of the Council of Ministers on defining the types of investments that can significantly affect the environment and on detailed terms of eligibility of endeavors for reports on their environmental impact (Dz. U. no 27, item 2573 with amendments) the ring road of Stargard Szczeciński was qualified as an environmentally harmful investment. Therefore it was necessary to perform the assessment of its effects on the environment. For the purpose of constructing the model exemplification the authors used data and information from the related documents. The documents included:

- report on the environmental impact of the ring road of Stargard Szczeciński being a segment of the route 10 from the Lipnik junction to the Święte junction [38],
- the post-investment analysis concerning the protection of local developed areas from noise [2],
- environmental monitoring [35].

The simplified structure of the model exemplification is presented in Fig. 2. It shows the system of modules which have been used to run the simulation. It should be noted that this system is replicated in the target model on each of the edges of the transport network included in the investments and some of the modules appear in the system several times on one edge. What is more, it is obvious that the choice of modules to be included in the target model depended on the availability of data.

Table 1 shows the system of equations in the Vensim DSS notation for the module exemplification (the noise pollution module). It has been constructed on the basis of noise pollution models used when estimating noise levels to be emitted by the forecasted traffic⁶. The primary module equation is expressed in a mathematical form⁷:

$$L_{l,m} = \alpha + \beta \cdot \log_{10}(v_m) + 10 \cdot \log_{10}(q_{l,m}), \quad (1)$$

where: $L_{l,m}$ level of noise pollution emitted on the edge l for the vehicle type m in dB(A);
 $q_{l,m}$ traffic volume on the edge l for the vehicle type m ; v_m mean velocity for the vehicle type m ; α, β function parameters for the vehicle type m .

⁵ Synthetic description of several system-dynamic models of transport systems can be found in [27].

⁶ See more on the methods of noise pollution assessment in: [13], [32].

⁷ Derived on the basis of: [36, p. 19] oraz [39, p. 3].

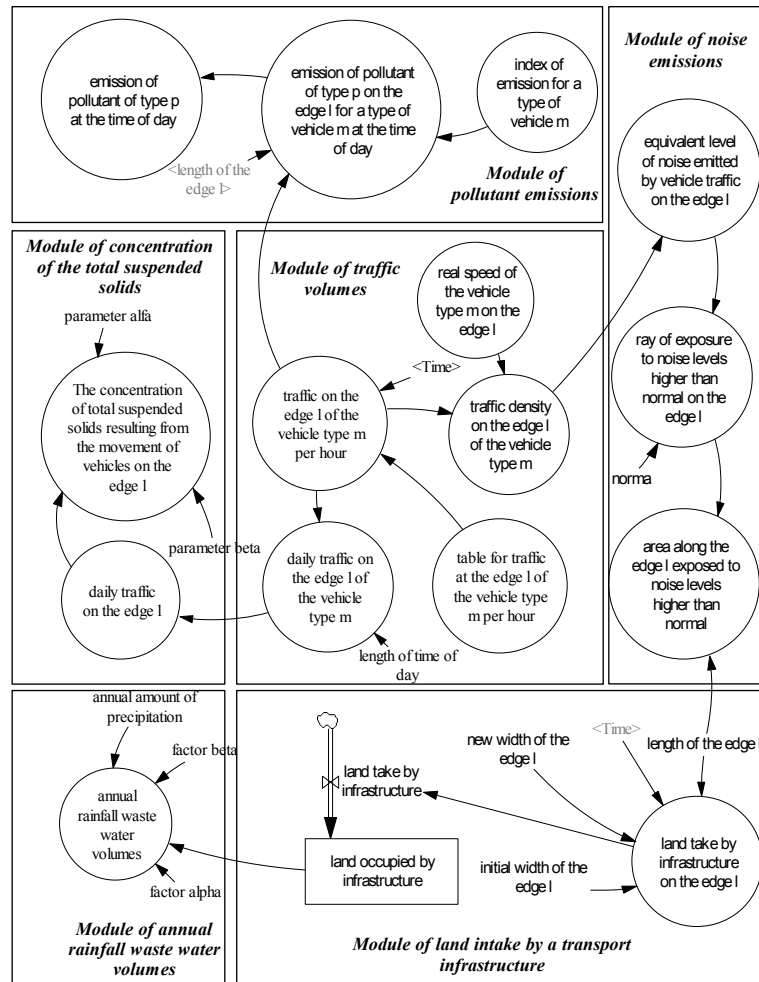


Fig. 2. The example structure of a model assessing the environmental impacts of transport
 Rys. 2. Przykładowa struktura modelu oceny wpływu transportu na środowisko

Table 1

System of equations of the noise pollution module in the VENSIM DSS notation

| Name of variable | Equation |
|--|---|
| area along the edge l exposed to noise levels higher than normal | length of the edge l*ray of exposure to noise levels higher than normal on the edge l |
| equivalent level of noise emitted by vehicle traffic on the edge l | $12.8+19.5*\text{LOG}(\text{real velocity of the vehicle type m on the edge l [edge, vehicle type, time of day],10})+10*\text{LOG}(\text{traffic density on the edge l of the vehicle type m [edge, vehicle type, time of day], 10})^8$ |
| norm | określona przez decydenta ⁹ |
| ray of exposure to noise levels higher than normal on the edge l | $(\text{equivalent level of noise emitted by vehicle traffic on the edge l-norm})/5.2^{10}$ |

Note: the values of such elements as: “length of the edge l”, “real velocity of the vehicle type m on the edge l” and “traffic density on the edge l of the vehicle type m” are computed in separate modules.

⁸ Value of the parameters α i β on the basis of: [36, p. 19].

⁹ Acceptable noise levels in the environment are defined in: [40].

¹⁰ On the basis of: [7, p. 41-43] and [14].

Fig. 3 presents the graph exemplification obtained in the course of an experimental simulation run by means of the Vensim DSS package. It shows the values of the primary noise pollution variable, which is the „equivalent level of noise emitted by vehicle traffic on the edge l” in case of the implemented investment option, i.e. the Southern Option, while the traffic forecast was determined in the „module of traffic volumes” basing on the assumptions adopted in the documents mentioned above.

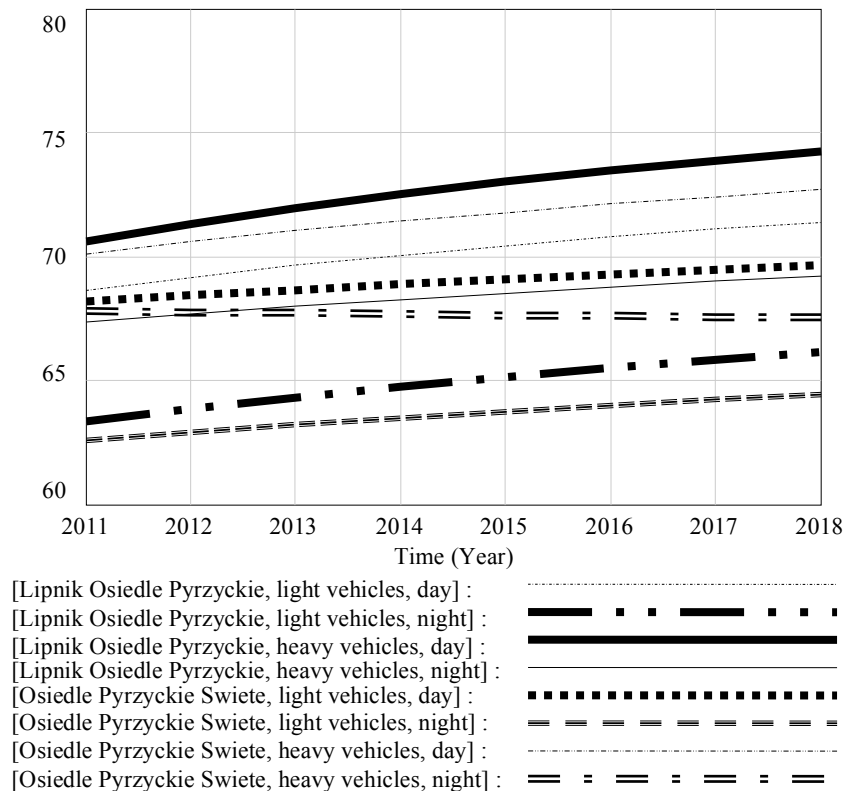


Fig. 3. Equivalent level of noise emitted by vehicle traffic on the edge l (in dB(A))

Rys. 3. Ekwiwalentny poziom hałasu emitowany przez ruch przewozowy na krawędzi l (w dB(A))

Comparison of data generated during the experiments with real data enabled the authors to conduct the initial model verification by means of qualitative tests¹¹ consisting in visual comparison of the simulated data with the available real data found in the report on the environmental impact [38]. The test results are promising. It is necessary to supplement the qualitative tests with quantitative ones where the accuracy of the simulated data will be measured. In this case it is recommended in the related literature to apply various measures of the model consistency¹². However, because the purpose of this article is to present the applicability of computer simulation for testing environmental impact of transport the authors are not going to examine thoroughly the problem of model verification and validation.

5. CONCLUSION

Owing to the fact that it is based on modular modeling the presented concept of a system-dynamic model for assessing the environmental impact of transport provides the opportunity to integrate a range of methods and models designed for the same purpose and makes it possible to evaluate

¹¹ See more on qualitative tests applied during the verification of system-dynamic models: [47].

¹² See more on the model consistency measures in: [18].

simultaneously all the effects in the dynamic approach. In the proposed model the mutual relations (direct and indirect) between individual variables are taken into consideration, thus reflecting the inner dynamics of the examined system and, at the same time, determining the values of all the effects that have been looked at in the analysis. The concept of modular modeling where ready-made structural blocks are used in the process of modeling and stored in a library of modules can be further developed to form a simulation system understood as a generator of simulation programs. Such a generator can include, apart from the library of modules, a data bank, a bank of modules and a bank of methods. So understood computer simulation system additionally equipped with the user's graphic interface would become a perfect tool to examine the impact of transport on the natural environment¹³.

Bibliography

1. Adamczyk, W. *Ekologia wyrobów – jakość, cykl życia, projektowanie*. Warszawa: Państwowe Wydawnictwo Ekonomiczne. 2004. 40 s. [In Polish: *Ecology of Goods – the Quality of Life, a Life Cycle. Designing*. Warsaw: PWN. 2004. 40 p.].
2. *Analiza porealizacyjną w zakresie oceny skuteczności zastosowanych rozwiązań mających na celu zapewnienie ochrony terenu zabudowy mieszkaniowej przed hałasem dla inwestycji pn. „Budowa obwodnicy Stargardu Szczecińskiego w ciągu drogi krajowej nr 10 na odcinku od węzła „Lipnik” do węzła „Święte”*. Opracowanie Nr GW-456/11, Biuro Projektowo-Pomiarowe ELGWID, Szczecin. Listopad. 2011 r. [In Polish: *Post Investment Analysis of the Effectiveness of the Applied Solutions to Protect the Households from Noise from the Investment „The Construction of a Ring Road Being a Segment of the Route 10 Circling Stargard Szczeciński from the Lipnik Junction to the Święte Junction”*. Report No GW-456/1, Design and Measurement Office ELGWID, Szczecin, November 2011].
3. *ASTRA, Assessment of Transport Strategies, Deliverable D3: System Dynamics Model Platform*. Institut für Wirtschaftspolitik und Wirtschaftsforschung. Universität Karlsruhe. 1999.
4. *ASTRA, Assessment of Transport Strategies. Project of the EU Commission on Strategic Assessment of Transport Policy Actions*. Institute for Policy Research. University of Karlsruhe. Karlsruhe. 2000.
5. Biniek, Z. Abschaetzung der Zukünftigen Entwicklungsmöglichkeiten des Alpenquerenden Güterverkehrs unter Verwendung eines Systemdynamischen Simulationsmodells. *Rationeller Transport*. 1986. No. 37. P. 18-30. [In German: Estimation of future development possibilities of the Transalpine freight traffic using a system dynamic simulation model. *Efficient transport*. 1986. No. 37. P. 18-30].
6. Bloomfield, B.P. *Modelling the World*. Oxford: Basil Blackwell. 1986.
7. Cempel, C. *Wibroakustyka Stosowana*. Warszawa: PWN. 1989 [In Polish: *Applied Vibroacoustics*. Warsaw: PWN. 1989].
8. Cempel, C. *Nowoczesne Zagadnienia Metodologii i Filozofii Badań*. Poznań: Politechnika Poznańska. 2003 [In Polish: *Contemporary Problems of Methodology and Philosophy of Research*. Poznań: Poznań University of Technology. 2003].
9. Cimren, E. & Bassi, A. & Fiksel, J. T21-Ohio, a System Dynamics Approach to Policy Assessment for Sustainable Development: A Waste to Profit Case Study. *Sustainability*. 2010. Vol. 2. No. 9. P. 2814-2832.
10. Coyle, R.G., *Management System Dynamics*. Chichester: John Wiley&Sons. 1979.
11. Dugonjic, V. & Himanen, V. & Nijkamp, P. & Padjen, J. The Links between Mobility and Environmental sustainability. In: Banister, D. & Berechman, J. (ed.) *Transport in a Unified Europe – Policies and Challenges*. Elsevier Science Publishers. 1993. P. 195-219.
12. *Dyrektywa 85/337/EWG z dnia 27 czerwca 1985 r. w sprawie skutków wywieranych przez niektóre przedsięwzięcia publiczne niepubliczne i prywatne dla środowiska* [In Polish: *Council*

¹³ The project was financed with the NCN funds allocated according to the decision DEC-2011/01/B/HS4/05232.

- Directive 85/337/EEC of 27 June 1985 on the assessment of the effects of certain public and private projects on the environment*].
13. Dyrektywa 2002/49/WE Parlamentu Europejskiego i Rady z dnia 25 czerwca 2002r. odnosząca się do oceny i zarządzania poziomem hałasu w środowisku, załącznik II Metody oceny wskaźników hałasu [In Polish: *Directive 2002/49/EC of the European Parliament and of the Council of 25 June 2002 relating to the assessment and management of environmental noise*]. Available at: <http://eur-lex.europa.eu/LexUriServ/LexUriServ.do?uri=CONSLEG:2002L0049:20081211:PL:PDF>.
 14. Engel, Z. *Ochrona środowiska przed drganiem i hałasem*. Warszawa: PWN. 2001. [In Polish: *Environmental Protection against Vibrations and Noise*. Warsaw: PWN. 2001].
 15. Ford, A. *Modeling the environment: An Introduction to system dynamics modeling of environmental systems*. Washington: Island Press. 1999.
 16. Forrester, J.W. *Principles of Systems*. Cambridge: MIT Press. 1968.
 17. Forrester, J.W. *Planung unter dem Einfluss komplexer Sozialer Systeme*. Politische Planung in Theorie und Praxis. München: Piper Verlag. 1971. [In German: *Planning under the influence of complex social systems*. Policy planning in theory and practice. München: Piper Verlag. 1971].
 18. Gajda, J. *Wielorównaniowe modele ekonometryczne. Estymacja, symulacja, sterowanie*. Warszawa: PWN. 1988 [In Polish: *Multi-equation Econometric Models. Estimation, Simulation, Steering*. Warsaw: PWN. 1988].
 19. Gotschalk, P. *A System Dynamics Model for Long Range Planning in a Railroad*. Oslo: Norges Teknisk – Naturvitenskapelige Forskningsrad. 1981.
 20. Hobeika, A.G. & Budhu, G. & Tran, A.K. *System Dynamics Approach to Transportation Planning in Developing Regions*. Transportation Research Record No 820. Washington. DC. 1981.
 21. *System Dynamics Society*. Available at: <http://www.systemdynamics.org/>.
 22. Kuchenbecker, K. & Rothengatter, W. A System Dynamics Approach to Transport Infrastructure Planning. In: Meersman H., Van de Voorde E., Winkelmanns W. (eds.) *World transport research : proceedings of the 8th World Conference on Transport Research*. Vol. 3. PERGAMON. 1999. P. 325-341.
 23. Leal Neto A de C. & Legey, L.F.L. & Gonzalez-Araya, M.C. & Jablonski, S. A System Dynamics Model for the Environmental Management of the Sepetiba Bay Watershed, Brazil. *Environ Manage*. Springer Science+Business Media Inc. 2006. P. 879-888.
 24. Leleur, S. & Kronbak, J. & Nielsen, O.A. & Rehfeld, C. & Bulman, E. & Giorgi, L. & Reynaud, Ch. & Viegas, J. & Räsänen, J. & Maffi, S. *CODE-TEN Deliverable D1. Baseline Methodology*. Vienna: ICCR. 1998.
 25. Łatuszyńska, M. *Model systemu przewozów pasażerskich*. Szczecin: Studia Informatica nr 5. Uniwersytet Szczeciński. 1992. P.101-117 [In Polish: Łatuszyńska, M. *A Model of Passenger Service System*. Szczecin: Studia Informatics No 5. The University of Szczecin. 1992. P. 101-117].
 26. Łatuszyńska, M. Modelowanie modułowe w symulacyjnym badaniu dynamiki systemów ekonomicznych. W: Budziński, R. (red.) *Informatyka i zarządzanie strategiczne*. Szczecin: Wydawnictwo WI PS. 1999. P. 337-352 [In Polish: Łatuszyńska, M. Modular Modeling in the Simulation of the Dynamics of Economic Systems. In: Budziński, R. (ed.) *Information Technology and Strategic Management*. Szczecin: Publishing House of WI PS. 1999. P. 337-352].
 27. Łatuszyńska, M. *Symulacyjne modelowanie ekonomicznych skutków podejmowania decyzji transportowych*. Szczecin: Studia Informatica. Nr. 15. Wydawnictwo Naukowe Uniwersytetu Szczecińskiego. 2001. [In Polish: *Simulation Modeling of the Economic Effects of Transport Decision-Making*. Szczecin: Studia Informatica. No. 15. Publishing House of University of Szczecin. 2001].
 28. Łatuszyńska, M. *Modelowanie efektów rozwoju międzynarodowych korytarzy transportowych*. Wydawnictwo Naukowe US. Szczecin. 2004. [In Polish: *Modeling the Effects of the Development of International Transport Networks*. Szczecin: Publishing House of University of Szczecin. 2004].
 29. Łatuszyńska, M. & Strulak-Wójcikiewicz, R. *Ekologiczne aspekty rozwoju infrastruktury transportu. Trendy i wyzwania zrównoważonego rozwoju*. Pr. zb. pod red. Kryk, B. Szczecin:

- Uniwersytet Szczeciński. 2011. P. 189-210 [In Polish: *Environmental Effects of the Transport Infrastructure Growth*. Collective work supervised by Kryk, B. Szczecin: The University of Szczecin. 2011. P. 189-210].
30. Łatuszyńska, M. & Strulak-Wójcikiewicz, R. *Komputerowe wspomaganie oceny wpływu rozwoju infrastruktury transportu na środowisko*. Studia Informatica Nr 30. Zeszyty Naukowe nr 733. Szczecin: Wydawnictwo Naukowe Uniwersytetu Szczecińskiego. 2012. P. 197-210 [In Polish: *Computer Support of the Assessment of the Environmental Impact of Transport Infrastructure* Studia Informatica No 30. Scientific Paper No. 733. Szczecin: Publishing House of University of Szczecin. 2012. P. 197-210].
 31. Malone, K.M. The scenario explorer for passenger transport a strategic model for long term travel demand forecasting. *Innovation*. Volume 14. No. 4. 2001.
 32. Zarządzanie hałasem. Available at: http://manhaz.cyf.gov.pl/manhaz/ETAP_2/V_PRACA%20HALAS_CIOP_final.htm. [In Polish: Noise Management].
 33. Małek, P. *Elementy cybernetyki w planowaniu przewozów*. Warszawa: WKiŁ. 1977 [In Polish: Małek, P. *Elements of Cybernetics in Transport Planning*. Warsaw: WKiŁ. 1977].
 34. Miłosz, E., & Miłosz, M. & Mitraszewska, I. *Modelowanie działalności przedsiębiorstwa spedycyjno-transportowego*. Zeszyt Naukowy nr 81. Warszawa: ITS. 1996 [In Polish: Miłosz, E., & Miłosz, M. & Mitraszewska, I. *Modeling the Operation of a Forwarding and Transport Company*. Scientific Paper No. 81. Warsaw: ITS. 1996].
 35. *Monitoring przyrodniczy dla inwestycji „Budowa obwodnicy Stargardu Szczecińskiego w ciągu drogi krajowej nr 10 na odcinku od węzła „Lipnik” do węzła „Święte”*. Ośrodek Rzeczoznawców SITR. Szczecin. Listopad. 2010 r. [In Polish: *Environmental Monitoring of the Investment „The Construction of a Ring Road Being a Segment of the Route 10 Circling Stargard Szczeciński from the Lipnik Junction to the Święte Junction”*. Appraisers Centre SITR. Szczecin. November. 2010].
 36. Müller-Wenk, R. *Life-Cycle Impact Assessment of Road Transport Noise*. Institut für Wirtschaft und Ökologie. Universität St. Gallen. 1999.
 37. Naylor, T.H. *Modelowanie cyfrowe systemów ekonomicznych*. Warszawa: PWN. 1975. [In Polish: Naylor, T.H. *Digital Modeling of Economic Systems*. Warsaw: PWN. 1975].
 38. *Raport o oddziaływaniu na środowisko obwodnicy Stargardu Szczecińskiego w ciągu drogi krajowej nr 10 na odcinku węzeł „Lipnik” – węzeł „Święte”*. Instytut Ochrony Środowiska – Samodzielna Pracownia ds. Ocen Środowiskowych. Warszawa. Wrzesień. 2006 r. [In Polish: *Report on the Environmental Impact of the Stargard Szczeciński Ring Road Being a Segment of the Route 10 Circling Stargard Szczeciński from the Lipnik Junction to the Święte Junction*. Institute of Environment - Independent Laboratory for Environmental Assessment. Warsaw. September. 2006].
 39. Räsänen, J. et al. *CODE-TEN Deliverable D6, Spatial Distribution of Environmental and Safety Impacts*. Vienna: ICCR. 1999. Annex 3.
 40. *Rozporządzenie Ministra Środowiska z dnia 1 października 2012 r. zmieniające rozporządzenie w sprawie dopuszczalnych poziomów hałasu w środowisku* (Dz. U. z dn. 08.10.2012 r., poz.1109) – obowiązujące od 23 października 2012 r. [In Polish: *The Resolution of the Minister of Environment of October 1, 2012 changing the resolution about the limits of noise in the environment* (Dz. U. of October 8, 2012, item 1109) – legally binding from October 23, 2012].
 41. Rydzkowski, W. & Wojewódzka-Król, K. *Współczesne Problemy polityki transportowej*. Warszawa: Polskie Wydawnictwo Ekonomiczne. 1997 [In Polish: *Contemporary Problems of Transport Policy*. Warsaw: Polskie Wydawnictwo Ekonomiczne. 1997].
 42. *SCENARIOS, Final Report*. Institut National de Recherche sur les Transport et leur Sécurité, Paris. 2000.
 43. *SCENES, European Transport Scenarios: Final Report*. Marcial Echenique & Partners Ltd. Cambridge. 2002.
 44. Schade, B. & Rothengatter, W. & Schade, W. *Strategien, Maßnahmen und ökonomische Bewertung einer dauerhaft umweltgerechten Verkehrsentwicklung. Bewertung der dauerhaft umweltgerechten Verkehrsentwicklung mit dem systemdynamischen Modell ESCOT (Economic*

- assessment of Sustainability poliCies Of Transport*). Berlin: Federal Environmental Agency. 2002. [In German: *Strategies, policies and economic evaluation of environmentally sustainable transport development. Evaluation of long-term environmentally friendly transport development with the system dynamics. Model ESCOT (Economic assessment of Sustainability poliCies Of Transport)*. Berlin: Federal Environmental Agency. 2002].
45. Schade, B. & Rothengatter, W. *The Economic Impact of Environmentally Sustainable Transport in Germany*. EJTIR. 4. 1. 2004.
 46. Stave, K. Participatory System Dynamics Modeling for Sustainable Environmental Management: Observations from Four Cases. *Sustainability*. 2010. Vol. 2. Vol. 9. 2010. P. 2762-2784.
 47. Sterman, J.D. *Business Dynaics System Thinking and Modeling for a Complex World*. Boston: Irwin McGraw-Hill. 2000.
 48. Strulak-Wójcikiewicz, R. & Łatuszyńska, M. *Ocena oddziaływania inwestycji w infrastrukturę transportu na środowisko – aspekty prawne i metodologiczne*. *Handel wewnętrzny*. Tom 3. Trendy i wyzwania zrównoważonego rozwoju w XXI wieku. Warszawa: Instytut Badań Rynku, Konsumpcji i Koniunktur. 2012. S. 121-132. [In Polish: *The Assessment of the Environmental Impact of Transport Investments – Legal and Methodological Aspects*. *Domestic trade*. Volume 3. Trends and challenges of sustainable development in XXI century. Warsaw: Institute for Market, Consumption and Business Cycles Research. 2012. P. 121-132].
 49. Yevdokimov, Y.V. Sustainable Transportation System: A System Dynamics Approach. *3rd International Conference on Public Economics*. Paris. 2002.
 50. Zdanowicz, R. *Modelowanie i symulacja procesów wytwarzania*. Gliwice: Wydawnictwo Politechniki Śląskiej. 2007 [In Polish: *Modeling and Simulation of Manufacturing Processes*. Gliwice: Publishing House of Silesian University of Technology. 2007].

Received 07.09.2012; accepted in revised form 14.01.2014