

Environment friendly ships for Baltic area

Krzysztof Rosochowicz, Prof., D.Sc.
(Chief coordinator of the E!2772 project)

Tomasz Łacki, M.Sc., Eng.
(Leader of the design office)
SINUS Ltd. Co.

ABSTRACT



The paper outlines the origin of the E.2772! project from the EUREKA group of European projects. Justification of undertaking the subject is given as well as the structure of institutional performers constituting the project executive consortium. Characterised is the final result in the form of preliminary designs of four modern ecological Baltic short shipping vessels: container carrier, product tanker, ro-ro ship and river-sea type ship. Comprehensive bibliography contains a list of all the project reports, which



may be made available to the interested parties after a contact with the project coordinator. The paper opens a series of topical papers selected from the different problems dealt with in the project.

Keywords: EUREKA project Baltecologicalship, project execution, preliminary designs of four ships

INTRODUCTION

The structural changes and enormous acceleration of the world economy cause a necessity of developing new generations of surface transport, including sea and inland waterway shipping. This applies to transportation of the investment and consumer goods as well as to passenger traffic. In the highly developed areas, strongly urbanized and inhabited by wealthier societies, one can hardly imagine further development of the traditional transport of goods through the road or even railway network, to meet the growing demand. With cautious forecasts of the increase of freight transport in the EU territory by approx. 38% by 2010, concentrated in the main land transport corridors and around large urban areas, activation of the sea and inland water transport incorporated into multimodal transport networks becomes a problem of vital importance.

The emphasis put on the development of sea transport has been for the last several years a clear policy of the European Union, where surface transport is to be divided into long distance transport between established and intensively developed central reloading nodes and short distance feeder transport. In the case of sea transport, the latter is defined as short shipping. This problem is also characteristic of the Baltic, which has become practically an EU *Mare Nostrum*.

The amount of cargoes transported annually in the Baltic area reaches 450 million tons. Approximately 5500 thousand trips are performed served by the 500 Baltic ports. In recent years, the annual increase of the volume of transported goods has been as big as 30%. It is estimated that some 5000 ships are operated in the Baltic, 40% of them are older than 20 years and will have to be replaced by new generation ships in the nearest future.

The Baltic short shipping development trends include mainly container carriers (300% increase of the volume of transport in 10 years), passenger ferries and product tankers. The actual structure and size of that new generation fleet will depend mainly on the long term development forecasts of the volume and type of cargo and the passenger tourist traffic.

Regardless of location of the Baltic multimodal transport corridors, ecological requirements will have to be met connected with new conception of the Baltic Sea status as PARTICULARLY SENSITIVE SEA AREA, to be implemented by 2005. That involves a necessity of creating a fleet of specialised new generation Baltic feeder service ships fulfilling strict ecological criteria. Designs of such ships, based not only on the verified design practice but also on the state-of-the-art knowledge, should be on offer in the shipyards, and shipping companies aspiring to participation in the European transport system should provide for operating such ships.

PRO-ECOLOGICAL REQUIREMENTS

Regardless of the type of ship, the following general pro-ecological requirements have to be met :

- Significant reduction of:
 - ⇒ all kinds of emissions and pollution connected with ship operation
 - ⇒ effects of possible sea averages and disasters
 - ⇒ negative effects of the solid waste utilization processes
 - ⇒ effects of vibration and noise
 - ⇒ negative effects of ship construction and repair processes.
- Improved safety and reliability of ship operation (structure and systems).
- Application of additional technologies, equipment and systems for proper utilization of the operational waste products.

Sources of hazards to the sea environment from an operating ship are schematically presented in Fig.1.

Meeting all the requirements of the new generation Baltic ships will certainly cause higher construction costs but it is estimated that they will be compensated for by e.g. lower insurance premiums, lower port charges and smaller hazards to the marine environment.

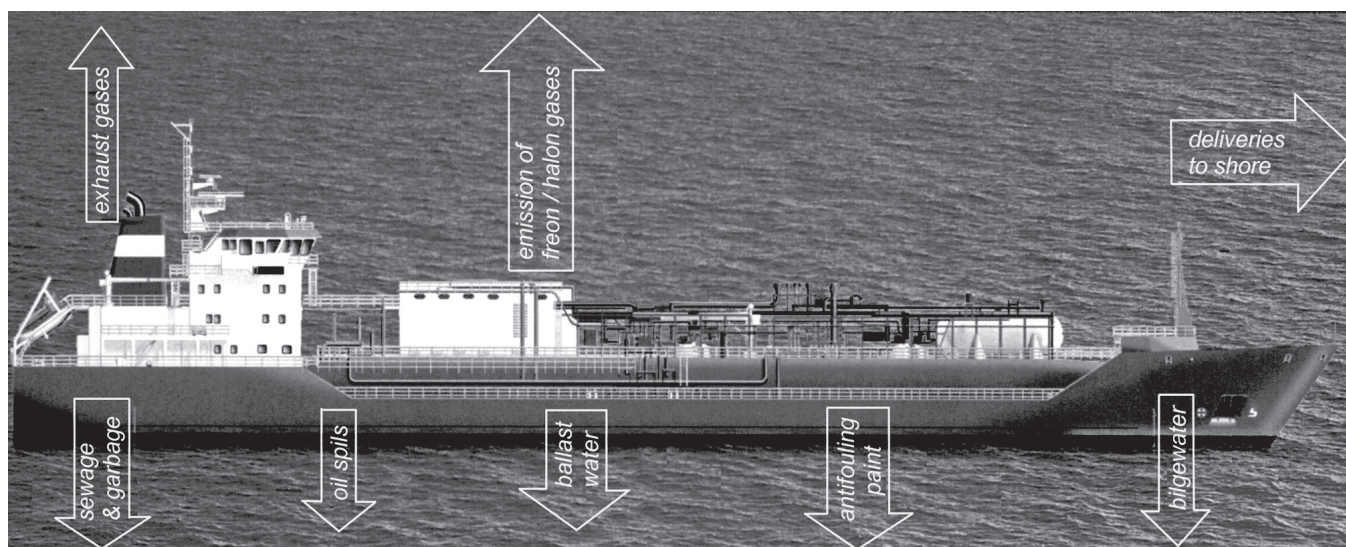


Fig. 1. Ecological hazards created by ship (acc. to DNV – Maritime Solutions – Clean Performance advertising materials)

PROJECT EXECUTION

In order to perform the task of establishing the Baltic ecological multimodal transport corridors with new generation ships, a European project E!2772 Baltecologicalship was set up in the EUREKA group and a consortium was formed of the following participants:

Technical universities

- * Gdańsk University of Technology, Faculty of Ocean Engineering and Ship Technology – chief executor and coordinator of the whole project; Faculty of Chemistry as responsible for preparations of selected shipbuilding sector companies for the ISO 9000 and 14000 certification
- * Szczecin University of Technology, Faculty of Maritime Technology.

Companies from the small and medium enterprise (SME) sector

- * SINUS Limited Company, performing design work on the conceptions of 4 types of Baltic ships
- * Toka Consulting Company, cooperating in the ISO reviews
- * Ship repair yard, which unfortunately withdrew from the project at an early stage.

Foreign partners

- * Boy&Partners-Loma Company, Sweden, co-performing the ISO reviews
- * Björn Carlsson Ecoship Engineering AB, Malmö, Sweden, performing own design work on the product tanker conception.

The consortium performed the work in two stages.

At the definition stage, studies were undertaken on the needed structure of the Baltic region sea transport as well as design conceptions and requirements of the ships.

At the design and testing stage, designs of the ships were carried out and, as they were being completed, laboratory tests and analyses of hull shapes were performed and also verifying calculations and analyses of machinery, equipment and system solutions were carried out. In effect, the designs were corrected as appropriate and submitted to final evaluation. Parallel

work was carried out to recognize the production capabilities of selected Polish shipyards. An advanced modernization conception of a selected shipyard was developed to ensure effective realisation of the contract.

The project participants, both the university teams and the small and medium enterprise (SME) sector companies, created an efficient and well functioning organism which has generated up-to-date designs forming a prospective development offer of the shipbuilding sector in its aspirations for the European operating structural funds.

At the same time, as a consequence of activities in the Swedish branch of the project, in cooperation with Polish specialist groups, 40 shipbuilding sector enterprises, including two medium size shipyards, have been prepared for beginning the ISO 9000 and 14000 standard certification process. The Swedish conception of a product tanker has obtained approval of a Swedish owner and after many rounds of negotiations in different shipyards, final contract talks are in progress in two selected shipyards.

THE SINE SERIES SHIPS

The project comprised the following ship types :

- SINE 202 universal container carrier
- SINE 203 oil product tanker
- SINE 204 ro-ro ship
- SINE 205 river-sea ship.

The designed ships had to fulfil the Det Norske Veritas (DNV) CLEAN class conditions, the first in the world complex set of classification requirements to guarantee ecological cleanness of a ship. A range of different solutions have been applied in the designed ships in order to meet the requirements.

In general, the solutions comprise :

- ❖ In connection with the increased safety requirements of ship in operation and in case of disastrous collision, the following solutions have been applied :
 - ☆ diesel-electric propulsion system (better use of fuel, minimum engine starting and stoppage time, significant limitation of water pollution by oil from the propulsion system)
 - ☆ pod propulsion and steering system (effectiveness increased by at least 10%, better manoeuvrability, less vibration and noise, elimination of rudder, minimum ship backing time, elimination of the cooling system)

SUMMARY

- ☆ two separate power plants (breakdown safety of propulsion and hull)
- ☆ double shell in the fuel tank and hold area (elimination of spills).
- ❖ In connection with restrictions on the emissions of gases to atmosphere and of the operational and technological media to water, the following solutions have been applied :
 - ☆ use of low sulphur content fuels
 - ☆ use of exhaust-gas catalyzers (limitation of NO_x and SO_x)
 - ☆ design constraints on oil spills and cooling medium spills, elimination of freon
 - ☆ minimalization of ballast water exchanges in order to avoid the hazards from propagation of microflora and microfauna
 - ☆ use of exclusively natural media in the fire fighting systems
 - ☆ limitation of the oil content in bilge waters to a 15 ppm level with an automatic STOP device switching the system off when the value is exceeded
 - ☆ use of ecologically safe internal and external ship paints
 - ☆ use of special ship sewage treatment procedures.
- ❖ In connection with solid waste treatment aboard ship, to be transferred to shore for utilisation, waste sorting machines have been applied.

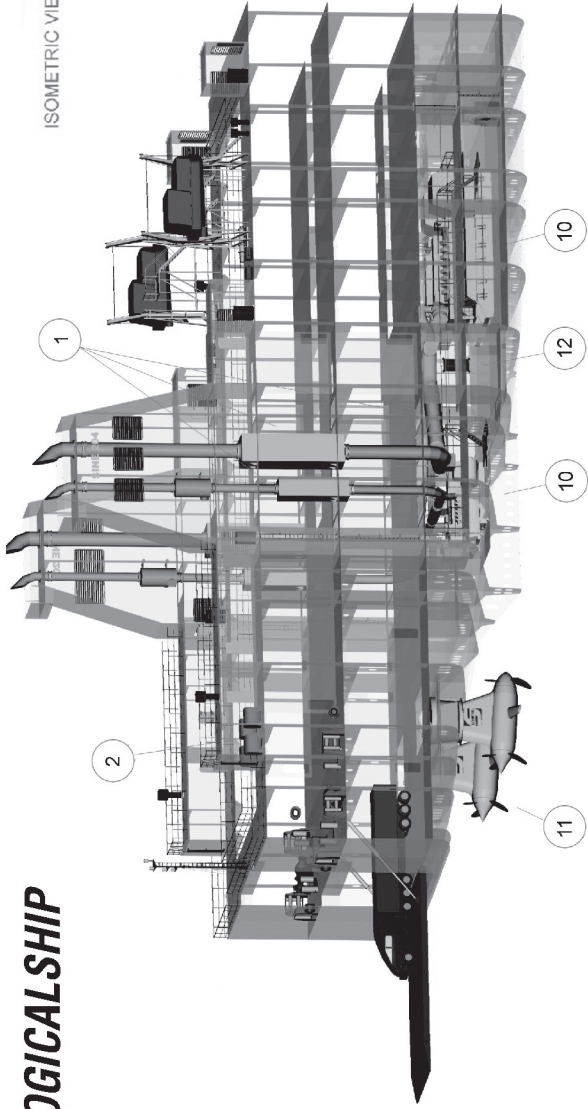
- The Eureka group European projects are an element of system support to the development of complex innovative products of small and medium enterprises obtaining their knowledge from the resources of scientific and research institutions. They create one of the mechanisms of organizing a European research and development network.
- The project execution consortium, sponsored by the Committee for Scientific Research on the Polish side and the VIANOVA and NUTEK government agencies on the Swedish side, brought together a research potential of 2 technical universities (3 faculties), many small and medium enterprise sector companies from the Polish side and 2 companies of that sector from the Swedish side and effectively combined science, knowledge, theory and design practice in realisation of a complex innovative task.
- The cooperation proved effective. Four ship designs have been created on the Polish side and three designs (product tanker) on the Swedish side. Forty Polish shipbuilding sector enterprises have been prepared for the ISO 9000 and 14000 standard series certification and also talks are in progress about an order of 4 product tankers for a Swedish owner. These are immediate effects of the cooperation.
- The obtained and processed knowledge – a basis of the design work – has been gathered together in 159 reports and other source materials, which will also be used for preparing a monograph publication (see bibliography).
- The product tanker design, selected with the use of synthesis of knowledge from earlier European projects, has been introduced as a subject of continued studies and analyses to the next Eureka group projects (ASPIS).
- Selected interesting topics of the analyses (in hydromechanics, design, structural design, ship systems, economy, production engineering) performed in the project will be published later on in this journal.

Main parameters of the designed ships are listed in the Table.

Fig. 2 presents general arrangement plan and 3D visualisation of the ro-ro ship stern showing elements of the systems necessary to meet the CLEAN class requirements. Figs. 3, 4 and 5 present the product tanker, container carrier and river-sea ship, respectively. The ship documentation has been prepared to the level of preliminary design of the feeder service means of transport.

Table

Parameters	Type of ship			
	SINE 204 Ro-ro ship	SINE 203 Product tanker	SINE 202 Container carrier	SINE 205 River-sea ship
L _{oa} [m]	150.76	138.10	138.1	89.45
L _{pp} [m]	147.75	132.0	132.0	87.47
B [m]	24.80	22.50	22.50	11.40
H to main deck [m]	to deck 4 19.60	12.80	to main deck 11.20	5.45
T _{des.} [m]	6.00	8.00	7.60	4.40/2.80
T [m]	6.50	8.70	8.55	
DWT	7400	12800	8550	2900
Speed [kn]	20.0	14.0	18.05	12.0/14
Range [n. miles]	8000	6000	10000	2500
Power [kW]	19500	5980	11200	2550
Generator [kW/V]	690	1120/660	1120/660	2x1120/690
Propulsion [kW]	pod 2x6500	pod 2x2200	pod 2x4350	pod 2x700
Prop. Ø [m]	3.8	3.2	3.2	1.7
Pod weight [t]	42		47	25
Load	7200 m ² – trailer deck	16900 m ³	950 TEU or 475 FE4	TEU 20 Holds – 54 Deck – 36 385 m ³
DNV Class	+1A1, Ro-Ro, Cargo Vessel, E1	+1A1 Tanker for Oil Products, ESP, EO ETC, ICE-1C, RPS, ICS, W1, CCO, LCS (SID)	+1A1 Container Carrier, EO, W1, S.C., RP	+1A1 General Cargo Carrier HC, EO, ICE-1C, RP

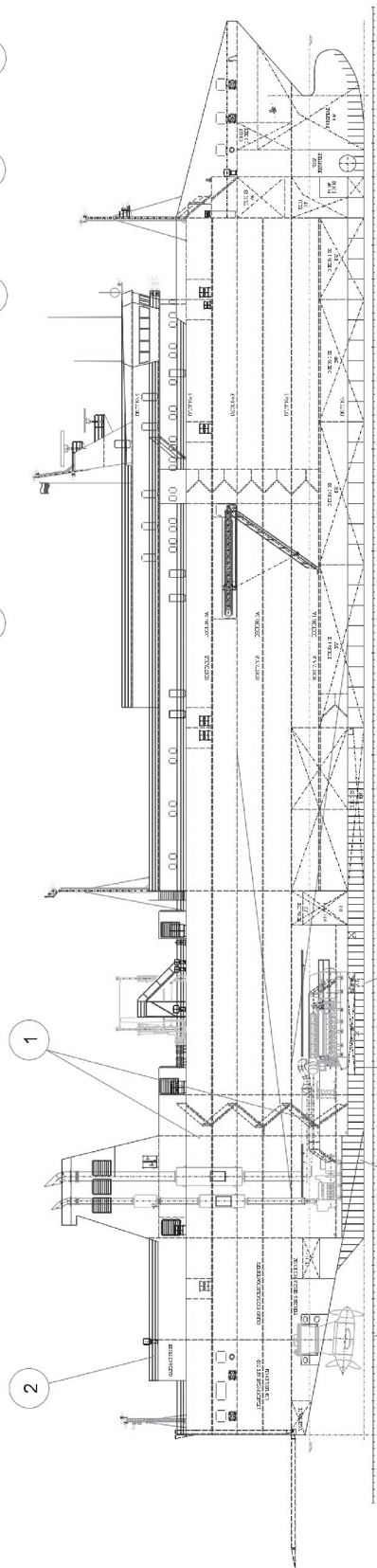


ENVIRONMENT FRIENDLY SHIP

FOR EXAMPLE RO-RO CARGO VESSEL "SINE 204"

1. Reduction of the NOx & SOx emission to the atmosphere from combustion machinery exhaust gases.
2. Garbage sorting system.
3. Not any ozone depleting substances are used as refrigerants.
4. Only natural substances are used as a medium in fixed fire fighting systems.
5. The active ingredients in the antifouling are of a non-TBT type.
6. Discharge of ballast water are restricted to minimum in order to prevent transport of harmful aquatic organisms and pathogens.
7. Bilge water system is fitted out in oil filtering equipment and 15 ppm alarm combinert with an automatic stopping device.
8. Sewage treatment and discharge are carried out acc. to approved sewage treatment.
9. Fuel tanks with double skin construction.
10. Diesel-electric propulsion system.
11. Poddred drive system.
12. Propulsion redundancy system achieved by two separate engine rooms.

SIDE VIEW



DECK No 1A
HOISTABLE 4900

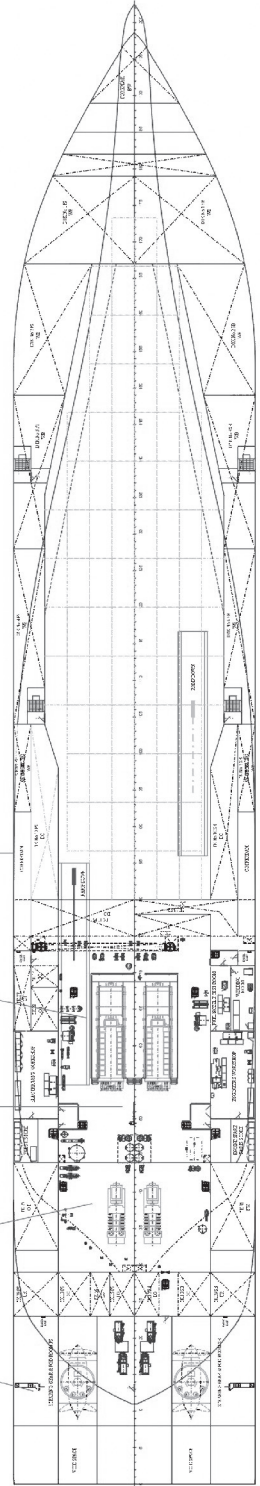
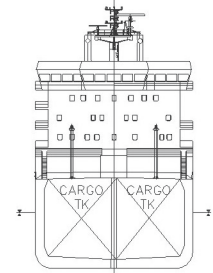
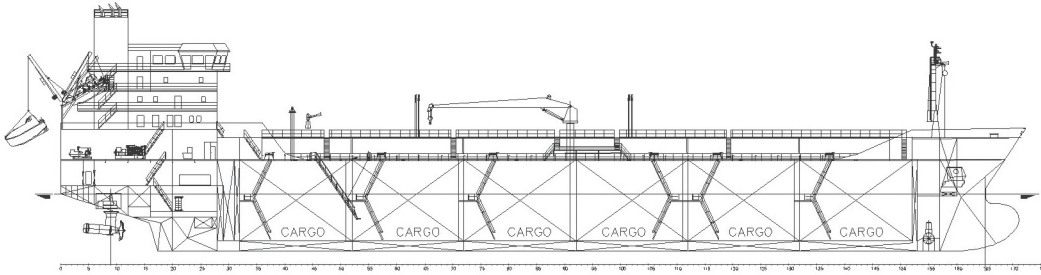


Fig. 2. Ro-Ro ship (SINE 204)



**ENVIRONMENT FRIENDLY SHIPS FOR BALTIC AREA
EUREKA PROJECT - E!2772 BALTECOLOGICALSHIP**



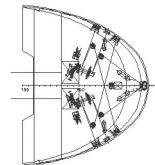
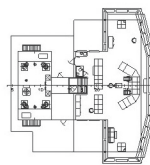
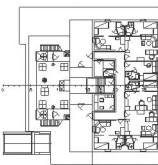
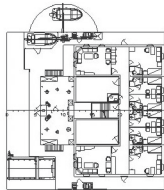
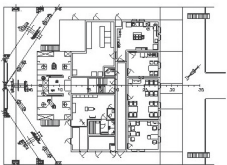
POOPDECK

A DECK

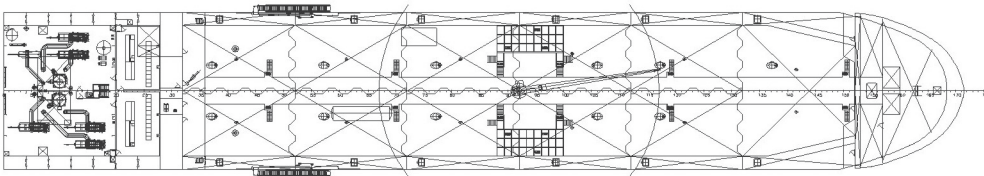
B DECK

WHEELHOUSE DECK

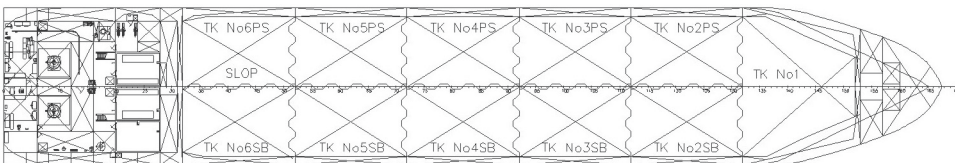
FORECASTLE DECK



MAIN DECK



2nd DECK



PRINCIPAL DIMENSIONS :

LENGTH (O.A.)	abt. 138,10 m
LENGTH (B.P.)	132,00 m
BREADTH	22,50 m
DEPTH	12,80 m
DRAUGHT DESIGN	8,00 m
DRAUGHT SCANTLING	8,70 m

CLASS :

DNV + 1A1 Tanker for Oil Products , ESP, EO, ETC, ICE-IC, RPS , ICS ,W1, CCO, LCS (SID)

CLEAN DESIGN

ER DOUBLE BOTTOM

DOUBLE BOTTOM

SINE203

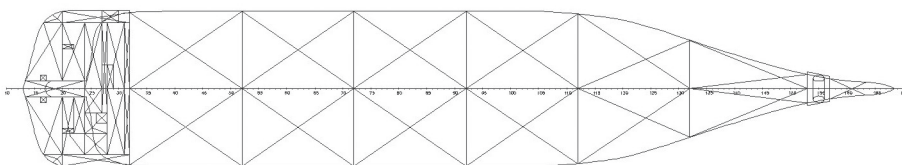
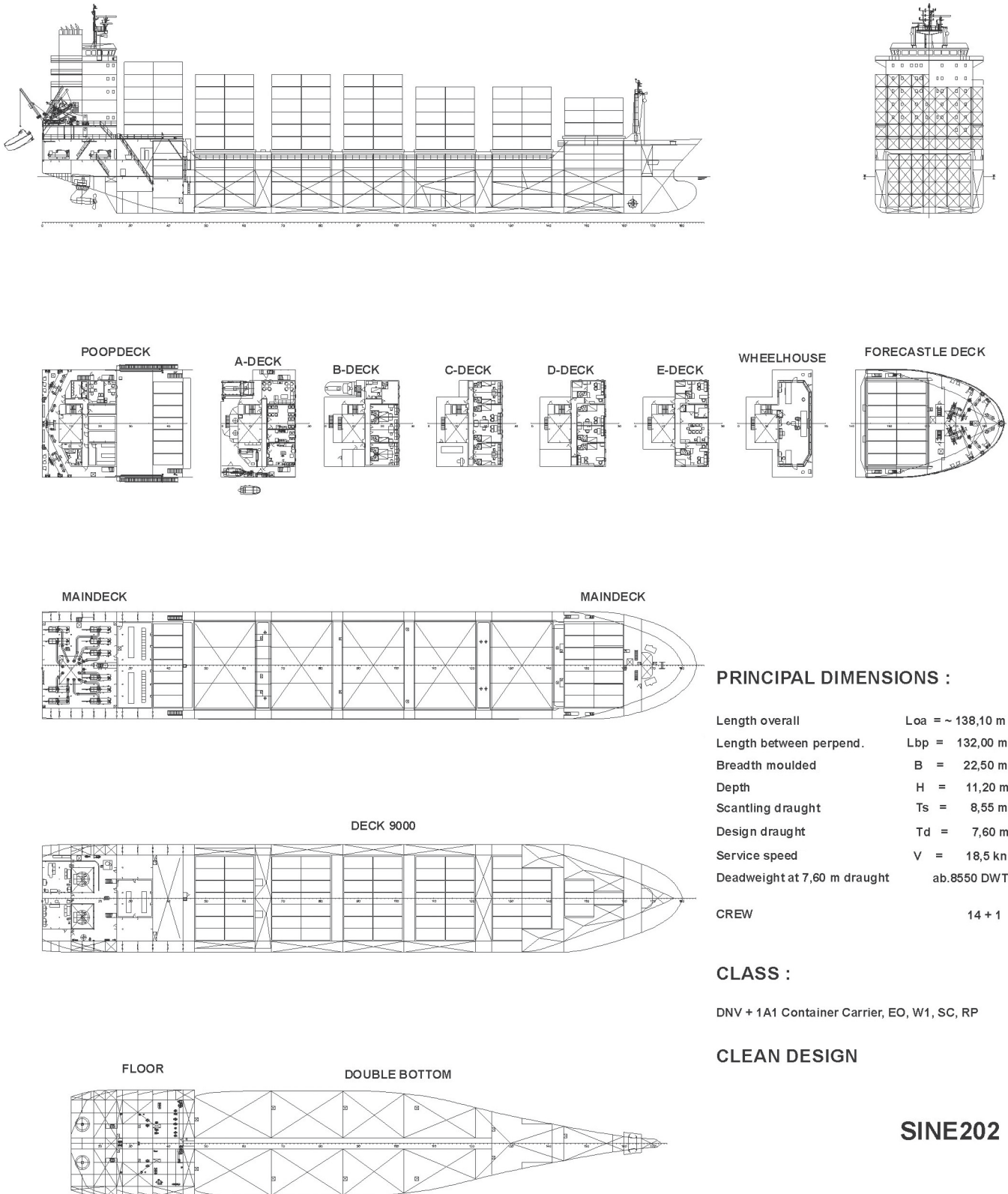


Fig. 3. Product tanker (SINE 203)



PRINCIPAL DIMENSIONS :

Length overall	Loa = ~ 138,10 m
Length between perpend.	Lbp = 132,00 m
Breadth moulded	B = 22,50 m
Depth	H = 11,20 m
Scantling draught	Ts = 8,55 m
Design draught	Td = 7,60 m
Service speed	V = 18,5 kn
Deadweight at 7,60 m draught	ab.8550 DWT
CREW	14 + 1

CLASS :

DNV + 1A1 Container Carrier, EO, W1, SC, RP

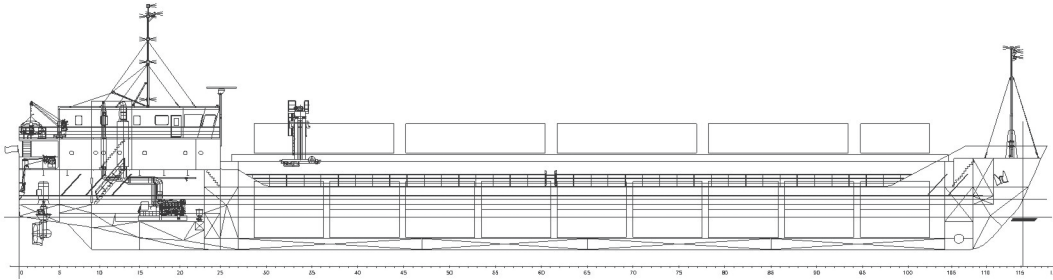
CLEAN DESIGN

SINE202

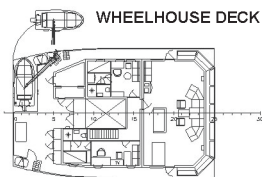
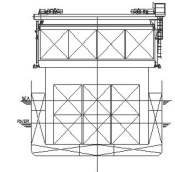
Fig. 4. Container carrier (SINE 202)



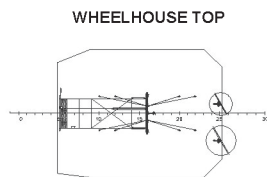
ENVIRONMENT FRIENDLY SHIPS FOR BALTIC AREA
EUREKA PROJECT - E!2772 BALTECOLOGICALSHIP



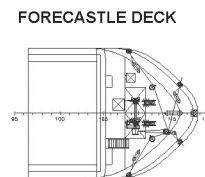
SECTION AT FR. No 70



WHEELHOUSE DECK

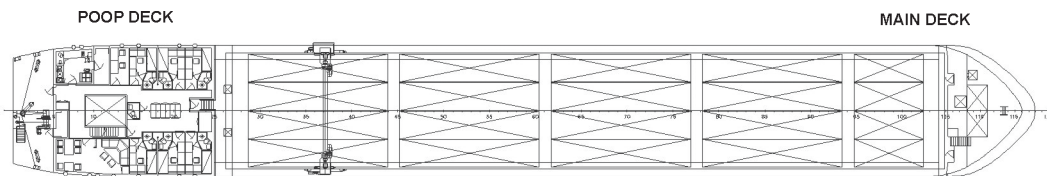


WHEELHOUSE TOP



FORECASTLE DECK

RIVER - SEA VESSEL

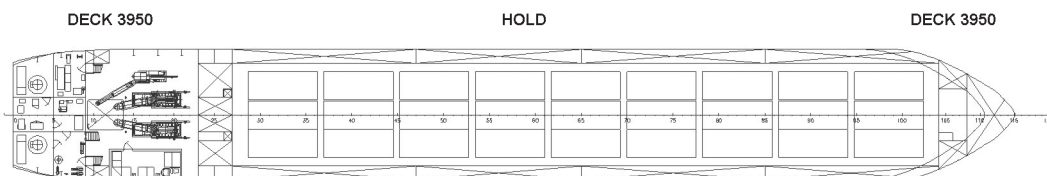


POOP DECK

MAIN DECK

PRINCIPAL DIMENSIONS :

LENGTH OVER ALL	89,45 m
LENGTH B.PERPENDICULARS	87,47 m
BREADTH MOULDED	11,40 m
DEPTH	5,45 m
SEA DRAUGHT	4,40 m
RIVER DRAUGHT	2,80 m
DEADWEIGHT	2900 DWT
CREW	8
SPEED	12,0 knots/14,0 km
TEU 20'	IN HOLDS 54
	ON DECK 36
HOLD CAPACITY	~3850 cub m



DECK 3950

HOLD

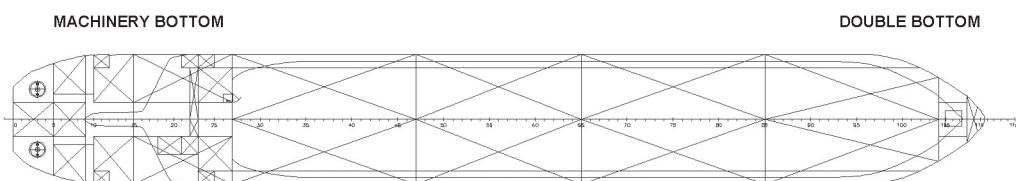
DECK 3950

CLASS :

DNV + 1A1 GENERAL CARGO CARRIER
HC, EO, ICE-1C, RP

CLEAN DESIGN

SINE205



MACHINERY BOTTOM

DOUBLE BOTTOM

Fig. 5. River-sea ship (SINE 205)

BIBLIOGRAPHY

All in Polish, except of [148÷151] in English

Economic conditions of the problem

1. Sawiczewska Z.: *Prospective assessment of the expected directions and intensity of cargo streams in the Baltic Sea and its hinterland*. Gdańsk, 2002
2. Kowalczyk U.: *Preliminary forecast of the demand for ships to serve the sea-borne trade in the Baltic Sea*. Gdańsk, 2002
3. Kowalczyk U.: *Assessment of the demand for new ships, in terms of their number and types, for carrying cargoes in the Baltic Sea*. Gdańsk, 2003
4. Kowalczyk U.: *Analysis of the quantitative and structural demand for new-built cargo-carrying ships in the Baltic sea-borne trade*. Gdańsk, 2003
5. Michalski J., Oleksiewicz B.: *Economic analysis of the documentation of ships developed within the BaltEcologicalShip project (construction and operating costs)*, Report No. 3. Gdańsk, 2003
6. Michalski J., Oleksiewicz B.: *Optimization of a fleet of ships in regular shipping on European lines in the Baltic Sea and North Sea region*. Part 1 - Problem formulation. Computational model. Parametric studies. Gdańsk, 2003
7. Michalski J., Oleksiewicz B.: *Optimization of a fleet of ships in regular shipping on European lines in the Baltic Sea and North Sea region*. Part 2 - Computer implementation - EURO.OPT program. Gdańsk, 2003
8. Buczkowski A., Fiedorowicz W., Grzesiek Z., Łącka M., Łącki J., Kazberuk M., Kiwit H., Milewicz B., Tabaczka E., Urbańczak K., Zwierzyński T., Żukowski A.: *Prediction of economic results of the undertaking - Calculation of the construction costs of tankers and container carriers in the Gryfia Ship Repair Yard S.A. with the construction technology and organization as in task IX.C.3 (minimum variant)*. Szczecin, 2003
9. Buczkowski A., Fiedorowicz W., Grzesiek Z., Łącka M., Łącki J., Kazberuk M., Kiwit H., Milewicz B., Tabaczka E., Urbańczak K., Zwierzyński T., Żukowski A.: *Calculation of the construction costs of a SINE 202 - 950 TEU / Lc=138.10 m container carrier*. Szczecin, 2003
10. Graczyk T., Metschkow B., Tołkacz L., Malinowska-Siemńska B., Piskorski L., Iwankowicz R., Rutkowski R., Wolnowska A., Abramowska E., Dzida B., Grzesiek Z., Kazberuk M.: *Prediction of economic results of the undertaking - Calculation of the construction costs of container carriers in the Gryfia Ship Repair Yard S.A. with the construction technology and organization as in task IX.C.3 (investment variant)*. Szczecin, 2003.
18. Szantyr J., Brzoska E., Grygorowicz M., Rogalski A.: *Resistance model tests and propulsion prediction of a modified hull shape of SINE 203 - C version tanker in still water*. Gdańsk, 2003
19. Misiąg W. A.: *Assessment of the Directional Stability and IMO Standard Manoeuvre Simulations for Balteological Ships*. Gdańsk, 2003
20. Szantyr J., Brzoska E., Grygorowicz M., Rogalski A.: *On the current status of the „Resistance Model Experiments For 4 New Types of Ships” task*. Gdańsk, 2003
21. Młynarczyk J.: *Ecological ship for the Baltic Sea. Legal status. Conventions and regulations. Ship class*. Gdańsk, 2002
22. Oleksiewicz B.: *Conception of the ship design solution verification studies in the EUREKA project framework*. Report 0.0.0. Gdańsk, 2002
23. Oleksiewicz B., Szymański T.: *Conversion of hull shape geometry from the KORAB program to the TRIBON ID/LINES program for a cellular container carrier*. Report 2.1.1. Gdańsk, 2002
24. Oleksiewicz B., Królak K., Kowalik K.: *Verification of hull shape geometry and geometric characteristics of a container carrier*. Report 2.1.2. Gdańsk, 2002
25. Oleksiewicz B., Szymański T.: *Conversion of hull shape geometry from the KORAB program to the TRIBON ID/LINES program for an oil product tanker*. Report 2.3.1. Gdańsk, 2002
26. Michalski J., Królak K.: *Verification of hull shape geometry and geometric characteristics of the SINE 203 oil product tanker*. Report 2.3.2. Gdańsk, 2002
27. Michalski J., Królak K.: *Verification of hull internal subdivision of the SINE 203 oil product tanker*. Report 2.3.3. Gdańsk, 2002
28. Oleksiewicz B., Michalski J., Królak K.: *Verification of buoyancy and intact stability of the SINE 203 oil product tanker*. Report 2.3.4. Gdańsk, 2003
29. Oleksiewicz B., Michalski J., Królak K.: *Verification of unsinkability and damage stability of the SINE 203 oil product tanker*. Report 2.3.5. Gdańsk, 2003
30. Oleksiewicz B., Michalski J., Królak K.: *Verification of hull internal subdivision of the SINE 202 container carrier*. Report 2.1.3. Gdańsk, 2003
31. Oleksiewicz B., Michalski J., Królak K.: *Verification of buoyancy and intact stability of the SINE 202 cellular container carrier*. Report 2.1.4. Gdańsk, 2003
32. Oleksiewicz B., Michalski J., Królak K.: *Conversion of hull shape geometry from the KORAB program to the TRIBON ID/LINES program for the SINE 204 Ro-Ro ship*. Report 2.3.1. Gdańsk, 2003
33. Oleksiewicz B., Michalski J., Królak K.: *Verification of hull shape geometry and geometric characteristics of the SINE 204 Ro-Ro ship*. Report 2.2.2. Gdańsk, 2003
34. Oleksiewicz B., Michalski J., Królak K.: *Verification of hull shape geometry and geometric characteristics of the SINE 204 Ro-Ro ship*. Report 2.2.3. Gdańsk, 2003
35. Oleksiewicz B., Michalski J., Królak K.: *Verification of hull shape geometry and geometric characteristics of the SINE 204 Ro-Ro ship*. Report 2.2.4. Gdańsk, 2003
36. Oleksiewicz B., Michalski J., Królak K.: *Verification of hull shape geometry and geometric characteristics of the SINE 204 Ro-Ro ship*. Report 2.2.5. Gdańsk, 2003
37. Oleksiewicz B., Michalski J., Królak K.: *Conversion of hull shape geometry from the KORAB program to the TRIBON ID/LINES program for the SINE 205 sea-river ship*. Report 2.4.1. Gdańsk, 2003
38. Oleksiewicz B., Michalski J., Królak K.: *Verification of hull shape geometry and geometric characteristics of the SINE 205 sea-river ship*. Report 2.4.2. Gdańsk, 2003
39. Oleksiewicz B., Michalski J., Królak K.: *Verification of hull internal subdivision of the SINE 205 sea-river ship*. Report 2.4.3. Gdańsk, 2003
40. Oleksiewicz B., Michalski J., Królak K.: *Verification of buoyancy and intact stability of the SINE 205 sea-river ship*. Report 2.4.4. Gdańsk, 2003

Hull design

11. Szantyr J., Brzoska E., Grygorowicz M., Rogalski A.: *Still water resistance model tests and propulsion prediction of the SINE 202 container carrier*. Gdańsk, 2003
12. Brzoska E., Grygorowicz M., Rogalski A., Stasiak J.: *Resistance in waves prediction of the SINE 202 container carrier*. Gdańsk, 2003
13. Szantyr J., Brzoska E., Stasiak J., Grygorowicz M., Rogalski A.: *Resistance model tests and propulsion prediction of the SINE 203 tanker in still water and in waves*. Gdańsk, 2003
14. Szantyr J., Brzoska E., Stasiak J., Grygorowicz M., Rogalski A.: *Resistance model tests and propulsion prediction of the SINE 204 Ro-Ro ship in still water and in waves*. Gdańsk, 2003
15. Szantyr J., Brzoska E., Grygorowicz M., Rogalski A.: *Resistance model tests and propulsion prediction of the SINE 205 river-sea ship in still water*. Gdańsk, 2003
16. Szantyr J., Brzoska E., Grygorowicz M., Rogalski A.: *Resistance model tests and propulsion prediction of the SINE 202 - B version container carrier in still water*. Gdańsk, 2003
17. Szantyr J., Brzoska E., Grygorowicz M., Rogalski A.: *Resistance model tests and propulsion prediction of a modified hull shape of SINE 205 - B and C version river-sea ship in still water*. Gdańsk, 2003

41. Królak K.: *Statistical analysis of the existing solutions of selected ship types in respect of their technical and operational parameters*. Report 1.2. Gdańsk, 2003
42. Oleksiewicz B., Michalski J., Królak K.: *Conclusions of the verification of design documentation of the SINE202, SINE 203, SINE 204, SINE 205 ships in the framework of EUREKA - „BaltEcologicalShip” project*. Report 1.3. Gdańsk, 2003
43. Oleksiewicz B., Michalski J., Młynarczyk J., Szymański T., Królak K.: *Verification of the ship design solutions of four types of cargo vessels for the Baltic Sea service*. Gdańsk, 2003
44. Bogdaniuk M., Górecki Z., Puch W., Łukowski R.: *Assessment of the overall, zone and local strength of a CONTAINER CARRIER hull structure*. Gdańsk, 2003
45. Bogdaniuk M., Górecki Z., Puch W., Łukowski R.: *Assessment of the overall, zone and local strength of a PRODUCT TANKER hull structure*. Gdańsk, 2003
46. Bogdaniuk M., Górecki Z., Puch W., Łukowski R.: *Preliminary analysis of the zone and local strength of a RO-RO ship*. Gdańsk, 2003
47. Bogdaniuk M., Górecki Z., Puch W., Łukowski R.: *Assessment of the overall, zone and local strength of a RO-RO ship hull structure*. Gdańsk, 2003
48. Bogdaniuk M., Górecki Z., Puch W.: *Preliminary analysis of the zone and local strength of a RIVER-SEA ship*. Gdańsk, 2003
49. Bogdaniuk M., Górecki Z., Puch W., Łukowski R.: *Assessment of the overall, zone and local strength of the RIVER-SEA ship hull structure*. Gdańsk, 2003
50. Bogdaniuk M., Górecki Z., Puch W., Łukowski R.: *Summary of the strength analyses of ship hull structures carried out within the EUREKA project*. Gdańsk, 2003
51. Bogdaniuk M., Górecki Z., Puch W., Łukowski R.: *Strength Analysis of Hull Structures*. Gdańsk, 2003
52. Abramowski T., Chądzyński W., Kaup J., Wilpiszewski W., Żelazny K., Bortnowska M.: *Analysis of the technical solutions of existing ships, indications of the possibilities of their improvement taking into account their operational reliability and safety - General analysis of the functional and arrangement solutions (3 ship types - container carrier, tanker, ro-ro ship)*. Szczecin, 2002
53. Siemionow J., Tołkacz L., Strulak R., Kaup M.: *Analysis of the technical solutions of existing ships, indications of the possibilities of their improvement taking into account their operational reliability and safety - General analysis of the functional and arrangement solutions (1 ship type - river-sea ship)*. Szczecin, 2002
54. Jastrzębski T., Taczała M., Sekulski Z., Banaszak W.: *Analysis of the technical solutions of existing ships, indications of the possibilities of their improvement taking into account their operational reliability and safety - Analysis of the existing structural solutions and of the requirements of rules and conventions related to the ultimate strength and collision resistance*. Szczecin, 2002
55. Michalski R., Zeńczak W., Dacewicz L.: *Analysis of the technical solutions of existing ships, indications of the possibilities of their improvement taking into account their operational reliability and safety - General analysis of solutions and effectiveness of the power plant and propulsion systems*. Szczecin, 2002
56. Banaszek A.: *Analysis of the technical solutions of existing ships, indications of the possibilities of their improvement taking into account their operational reliability and safety - Analysis of solutions of the liquid cargo handling installation in tankers*. Szczecin, 2002
57. Banaszek A.: *Analysis of the technical solutions of existing ships, indications of the possibilities of their improvement taking into account their operational reliability and safety - Analysis of solutions of the environment protection equipment in the product and chemical tankers*. Szczecin, 2002
58. Abramowski T., Kaup J., Wilpiszewski W.: *Analysis of the technical solutions of existing ships, indications of the possibilities of their improvement taking into account their operational reliability and safety - Analysis of the hydrodynamic properties of tanker, container carrier, ro-ro vessel and river-sea ship hull shapes*. Szczecin, 2003
59. Jastrzębski T., Taczała M., Sekulski Z., Banaszak W.: *Analysis of the technical solutions of existing ships, indications of the possibilities of their improvement taking into account their operational reliability and safety - Verification calculations and structural optimization in relation to the ultimate strength and collision resistance criteria*. Szczecin, 2003
60. Michalski R., Zeńczak W., Matejski M.: *Analysis of the technical solutions of existing ships, indications of the possibilities of their improvement taking into account their operational reliability and safety - Technical aspects of the use of fuel cells in ships*. Szczecin, 2003
61. Banaszek A.: *Analysis of the technical solutions of existing ships, indications of the possibilities of their improvement taking into account their operational reliability and safety - Analysis of the solutions of side ports and closures in ro-ro ships*. Szczecin, 2003
62. Filin S., Zakrzewski B.: *Analysis of the technical solutions of existing ships, indications of the possibilities of their improvement taking into account their operational reliability and safety - New pro-ecological solutions of the ship refrigerating and air conditioning plants*. Szczecin, 2003
63. Joint study of the Szczecin University of Technology: *Design requirements for 2 types of new ships - tanker and container carrier - General design parameters*. Szczecin, 2003
64. Banaszek A.: *Design requirements for 2 types of new ships - tanker and container carrier - Equipment design*. Szczecin, 2003
65. Rosochacki W.: *Design requirements for 2 types of new ships - river-sea general cargo ship and ro-ro ship - Equipment design*. Szczecin, 2003
66. Michalski R., Zeńczak W., Matejski M.: *Design requirements for 2 types of new ships - tanker and container carrier - Power plant design*. Szczecin, 2003
67. Michalski R., Zeńczak W., Matejski M.: *Design requirements for 2 types of new ships - river-sea general cargo ship and ro-ro ship - Power plant design*. Szczecin, 2003
68. Siemionow J., Zawada-Michułka D., Kaup M., Buczek J.: *Design requirements for 2 types of new ships - tanker and container carrier - Integration and verification*. Szczecin, 2003
69. Siemionow J., Tołkacz L., Strulak R., Kaup M., Buczek J.: *Design requirements for 2 types of new ships - river-sea general cargo ship and ro-ro ship - Integration and verification*. Szczecin, 2003
70. Kaup J., Wilpiszewski W.: *Design requirements for 2 types of new ships - river-sea general cargo ship and ro-ro ship - General design parameters - proposed changes to the river-sea ship design*. Szczecin, 2003.

Power plants

71. Domachowski Z., Dzida M.: *Analysis of the power plant and propulsion system solutions with gas turbine as ship prime mover*. Gdańsk, 2003
72. Domachowski Z., Dzida M.: *Analysis of Gas Turbine as Ship Prime Mover*. Gdańsk, 2003
73. Jamroż J.: *Analysis and synthesis of the contemporary methods of main engine selection*. Gdańsk, 2002
74. Bocheński D.: *Analysis and synthesis of a set of necessary data to initiate the main engine selection process*. Gdańsk, 2002
75. Wieszczyński T.: *Analysis and synthesis of the environment protection requirements in the main engine selection process*. Gdańsk, 2002
76. Lemski J., Jelińska N.: *Analysis and synthesis of the ship propulsion system renovation*. Gdańsk, 2002
77. Kubiak A.: *Analysis and synthesis of the main engine operational conditions and the resulting changes in engine performance parameters and in other properties*. Gdańsk, 2002

78. Bocheński D.: *Analysis and synthesis of the requirements of standards and classification society rules with respect to the main engine selection*. Gdańsk, 2002
79. Kubiak A.: *Selection of shaft lines taking into account their power aspects*. Gdańsk, 2002
80. Girtler J., Bzura P.: *Analysis and synthesis of the events occurring in the propulsion system operation phase*. Gdańsk, 2002
81. Girtler J., Bzura P.: *A set of ship propulsion system operation process states*. Gdańsk, 2002
82. Brandowski A., Liberacki R.: *Analysis and synthesis of the requirements of main engine operation reliability and safety*. Gdańsk, 2002
83. Girtler J.: *Analysis and synthesis of the needs and possibilities of designing an operational process of ship propulsion systems in respect of operation reliability and safety. Selection of the ship main propulsion in respect of reliability and safety*. Gdańsk, 2002
84. Kubiak A.: *Opinion, in the power aspect, on the container carrier and product tanker power plant designs prepared by the SINUS design office*. Gdańsk, 2002
85. Girtler J.: *Opinion, in the reliability and safety aspect, on the container carrier and product tanker power plant designs prepared by the SINUS design office*. Gdańsk, 2002
86. Smajdor M.: *Analysis and synthesis of the selection methods of cargo ship propeller materials*. Gdańsk, 2003
87. Girtler J.: *Selection of a propeller, taking into account its power parameters*. Gdańsk, 2003
88. Girtler J.: *Selection of a propeller, taking into account its reliability and safety parameters*. Gdańsk, 2003
89. Girtler J., Bzura P.: *Analysis and synthesis of events occurring in the propulsion system operation phase, establishment of a set of process states when situations hazardous to the ship or natural environment safety arise*. Gdańsk, 2003
90. Girtler J., Bzura P.: *Analysis and synthesis of events occurring in the propulsion system operation phase, development of a model of the propulsion system operation process*. Gdańsk, 2003
91. Girtler J.: *Selection of a shaft line, taking into account its reliability and safety aspects*. Gdańsk, 2003
92. Girtler J.: *Model of a process when situations hazardous to the ship or natural environment safety arise*. Gdańsk, 2003
93. Girtler J., Bzura P.: *A semi-Markov reliability model and ship propulsion safe operation model*. Gdańsk, 2003
94. Bzura P.: *Analysis of the ship main propulsion tribological system failures causing situations hazardous to ship safety*. Gdańsk, 2003
95. Brandowski A.: *Analysis of the propulsion system operation events hazardous to ship safety*. Gdańsk, 2003
96. Lemski J., Jelińska N.: *Strategy of the preventive servicing of ship main propulsion system elements*. Gdańsk, 2003
97. Girtler J.: *Report on realization of research tasks performed by the staff of the Faculty of Ocean Engineering & Ship Technology within the framework of EUREKA „Baltecollogicalship” project, prepared for the General Meeting to be held on the 25 September 2003 on the premises of the Faculty of Ocean Engineering & Ship Technology of the Gdańsk University of Technology*. Gdańsk, 2003
98. Girtler J.: *The most essential research outcomes achieved by the Ship Power Plant Chair as a result of performing the Eureka „Baltecollogical Ship” project*. Gdańsk, 2003.
- Systems and equipment**
99. Wieszczyński T.: *Analysis of the selected requirements and methods of environment protection against pollution from ships*. Gdańsk, 2003
100. Wieszczyński T.: *Analysis of the solutions available on the ship environment protection equipment market*. Gdańsk, 2003
101. Krępa J.: *Selection and design solutions of the anchoring and mooring equipment*. Gdańsk, 2003
102. Nakielski J.: *Cargo handling systems, hatch tasks - analysis*. Gdańsk, 2003
103. Nakielski J.: *Cargo handling systems, cargo handling auxiliary equipment, hatch covers of a container carrier, tanker, product tanker and sea-river ship*. Gdańsk, 2003
104. Wieliczko L., Nalewski A.: *Analysis of the existing life-saving and rescue equipment aboard cargo ships*. Gdańsk, 2003
105. Krępa J.: *Analysis of the layout and design solutions of deck equipment, taking into account the marine environment protection requirements*. Gdańsk, 2003
106. Dymarski C., Litwin W., Piątek D.: *Analysis of the main propulsion and steering system equipment*. Gdańsk, 2003
107. Dymarski C. - chapters I and II, Wieliczko L. - chapter II, Nalewski A. - chapter II: *Technical and static analysis of the steering system design solutions, defining the thruster design requirements*. Gdańsk, 2003
108. Dymarski C., Dąbrowski K.: *Steering and automatic control systems for a container carrier, tanker, product tanker and sea-river ship*. Gdańsk, 2003
109. Dymarski C.: *Defining a main thruster parameter selection method*. Gdańsk, 2003
110. Dymarski C.: *Technical analysis and basic requirements for mooring and anchor systems*. Gdańsk, 2003
111. Abramowski T., Kaup J., Wilpiszewski W.: *Review of the current state of environment protection requirements - Analysis of the legal regulations related to environment protection, setting out recommendations for the designed ships*. Szczecin, 2002
112. Siemionow J., Woś K., Sułek J., Kaup M.: *Review of the current state of environment protection requirements - Analysis of the legal regulations related to environment protection, setting out recommendations for the designed ships, integration of the work done*. Szczecin, 2002
113. Graczyk T., Piskorski L., Abramowska E.: *Review of the current state of environment protection requirements - Analysis of the legal regulations related to environment protection, setting out recommendations for the designed ships*. Szczecin, 2002
114. Siemionow J., Kaup M., Gackowska-Cieściów R.: *Review of the current state of environment protection requirements - Analysis of the legal regulations related to environment protection, setting out recommendations for the designed ships - Integration of the work performed by other Chairs and Departments in 2002 and 2003*. Szczecin, 2003
115. Michalski R., Zeńczak W., Matejski M.: *Review of the current state of environment protection requirements - Ecological hazards caused by the ship power plant operation*. Szczecin, 2003
116. Filin S., Zakrzewski B.: *Review of the current state of environment protection requirements - Ecological hazards caused by the ship refrigeration and air conditioning plant operation*. Szczecin, 2003.
- Materials**
117. Krzysztofowicz T., Darski W., Eichert P., Smajdor M.: *Verification of the design requirements for 4 types of new ships in relation to material selection*. Gdańsk, 2003
118. Darski W., Eichert P., Smajdor M.: *Verification of the design requirements for 4 types of new ships in relation to material selection*. Gdańsk, 2003
119. Bugłacki H., Smajdor M.: *Verification of the requirements for hull material selection for 4 types of newly designed ships*. Gdańsk, 2003.
- Production technology**
120. Kozak J., Switała M., Bużan A.: *Evaluation of the technological process quality from the viewpoint of environment protection requirements and of implementation of the ISO 14001 standards in Polish shipyards*. Gdańsk, 2002
121. Kolenda T., Mściwujewski T., Behilil M., Łabuć A., Pyszko R.: *A feasibility study of the construction of SINE 203 ship in the Gryfia Ship Repair Yard S.A. facilities (Part I)*. Gdańsk, 2003
122. Kolenda T., Mściwujewski T., Behilil M., Łabuć A., Pyszko R.: *General construction technology for the SINE 203 ship in the technological conditions of Gryfia Ship Repair Yard S.A. (Part II)*. Gdańsk, 2003
123. Kolenda T., Mściwujewski T., Behilil M., Łabuć A., Pyszko R.: *General construction technology for the SINE 203 ship in*

- the technological conditions of Szczecin „Nowa” Shipyard S.A. (Part III). Gdańsk, 2003
124. Kolenda T., Mściwujewski T., Behilil M., Łabuć A., Pyszko R.: *General construction technology for the SINE 203 ship in the technological conditions of Northern Shipyard S.A. (Part IV)*. Gdańsk, 2003
 125. Kolenda T., Mściwujewski T., Behilil M., Łabuć A., Pyszko R.: *Summary of the technological analyses (300A÷D/E/2003)*. Gdańsk, 2003
 126. Kolenda T., Mściwujewski T., Behilil M., Łabuć A., Pyszko R.: *Methodology of shipyard selection for building a steel hull*. Gdańsk, 2003
 127. Buczkowski A., Fiedorowicz W., Grzesiek Z., Łącka M., Łącki J., Kazberuk M., Kiwit H., Milewicz B., Tabaczka E., Urbańczak K., Zwierzyński T., Żukowski A.: *Development of the construction technology and organization for the new ships with particular attention paid to the environment-friendly construction processes (minimum variant) - Identification of the environmental hazards from shipyard production processes in the case of Gryfia Ship Repair Yard (part 1-5)*. Szczecin, 2002
 128. Buczkowski A., Fiedorowicz W., Grzesiek Z., Łącka M., Łącki J., Kazberuk M., Kiwit H., Milewicz B., Tabaczka E., Urbańczak K., Zwierzyński T., Żukowski A.: *Development of the construction technology and organization for the new ships with particular attention paid to the environment-friendly construction processes - Conception of the environment protection measures against the hazards from shipyard production processes in the case of Gryfia Ship Repair Yard (part 6)*. Szczecin, 2002
 129. Buczkowski A., Fiedorowicz W., Grzesiek Z., Łącka M., Łącki J., Kazberuk M., Kiwit H., Milewicz B., Tabaczka E., Urbańczak K., Zwierzyński T., Żukowski A.: *Development of the construction technology and organization for the new ships with particular attention paid to the environment-friendly construction processes - Development of an environment-friendly general construction technology for the new ships - minimum variant (part 7)*. Szczecin, 2002
 130. Graczyk T., Piskorski L., Abramowska E.: *Development of the construction technology and organization for the new ships with particular attention paid to the environment-friendly construction processes - Identification of the environmental hazards from shipyard production processes - synthesis of the problems*. Szczecin, 2003
 131. Graczyk T., Metschkow B., Malinowska-Siemieńska B., Piskorski L., Iwankowicz R., Rutkowski R., Wolnowska A., Abramowska E., Dzida B.: *Development of the construction technology and organization for the new ships with particular attention paid to the environment-friendly construction processes - Conception of the environment protection measures against the hazards*. Szczecin, 2003
 132. Graczyk T., Metschkow B., Tołkacz L., Malinowska-Siemieńska B., Piskorski L., Iwankowicz R., Rutkowski R., Wolnowska A., Abramowska E., Dzida B., Grzesiek Z.: *Development of the construction technology and organization for the new ships with particular attention paid to the environment-friendly construction processes - Development of an environment-friendly general construction technology for the new ships - investment variant*. Szczecin, 2003
 133. Buczkowski A., Fiedorowicz W., Grzesiek Z., Łącka M., Łącki J., Kazberuk M., Kiwit H., Milewicz B., Tabaczka E., Urbańczak K., Zwierzyński T., Żukowski A.: *Technical and economic analysis of the pro-ecological investments in the Gryfia Ship Repair Yard, necessary for building ships in the environment-friendly conditions – minimum variant (Analysis of the technological solutions in Gryfia Ship Repair Yard - present state, selection and preparation of the best investment variant, defining the investment stages, realization time and costs of investment)*. Szczecin, 2003
 134. Graczyk T., Metschkow B., Tołkacz L., Malinowska-Siemieńska B., Piskorski L., Iwankowicz R., Rutkowski R., Wolnowska A., Abramowska E., Dzida B., Grzesiek Z., Kazberuk M.: *Technical and economic analysis of the pro-ecological investments in the Gryfia Ship Repair Yard, necessary for building ships in the environment-friendly conditions – investment variant (Analysis of the technological solutions in Gryfia Ship Repair Yard - present state, selection and preparation of the best investment variant, defining the investment stages, realization time and costs of investment)*. Szczecin, 2003.
- ### Preliminary ship design
135. The SINUS design team: *Preliminary conception design with description of the SINE 202 container carrier*
 136. The SINUS design team: *Preliminary conception design with description of the SINE 203 product tanker*
 137. The SINUS design team: *Preliminary conception design with description of the SINE 204 Ro-Ro ship*
 138. The SINUS design team: *Preliminary conception design with description of the SINE 205 river-sea ship*
 139. The SINUS design team: *An example of the SINE 204 Ro-Ro ship*
 140. The SINUS design team: *Analysis of alternative pro-ecological solutions and a design conception of a new environment-friendly container carrier for the Baltic Sea*. Szczecin, 2002
 141. The SINUS design team: *Analysis of alternative pro-ecological solutions and a design conception of a new environment-friendly tanker for the Baltic Sea*. Szczecin, 2002
 142. The SINUS design team: *A conception-classification design of the SINE 202 Ecoship container carrier*. Szczecin, 2002
 143. The SINUS design team: *A conception-classification design of the SINE 203 Ecological oil product tanker*. Szczecin, 2002
 144. The SINUS design team: *Analysis of alternative pro-ecological solutions and a design conception of a new environment-friendly SINE 204 Ro-Ro ship for the Baltic Sea*. Szczecin, 2003
 145. The SINUS design team: *A conception-classification design of the SINE 205 river-sea vessel*. Szczecin, 2003.
- ### Preparation for implementation of the ISO 9000 and ISO 14000 standards
146. Translation: Sułek Z.: *Handbook - Environmental reviews in the shipbuilding industry sector*
 147. Adamska K., Adamski T., Szalewski P.: *Handbook - Implementation of a quality management system in accordance with ISO 9001:2000*
 148. Wolska L.: *Environmental law*
 149. Wolska L.: *Environmental investigation of the Polish shipyard industry sector (Part A)*
 150. Jansson B.O.: *Environmental investigation of the Polish shipyard industry sector (Part B)*
 151. Carlsson B., Nyberg B.: *BaltEco-Logicalship (EEAB part)*.
- ### Protocols of seminars and steering committee meetings
152. Borzęcki T.: *Minutes of the General Meeting and Steering Committee Meeting*. Gdańsk, 9-10th December 2002
 153. Borzęcki T.: *Minutes of the Working Meeting*. Gdańsk, 23rd January 2003
 154. Borzęcki T.: *Minutes of the General Meeting and Steering Committee Meeting*. Gdańsk, 25-26th September 2003.
- ### Final verification of the project
155. Oreńczuk G.: *Appraisal of the SINE 203 tanker power plant design*. Szczecin, 2002
 156. Graczyk T.: *Appraisal of the documents prepared by a Gryfia Shipyard group within the IX-C3 (2002) task*. Szczecin, 2002
 157. Chądzyński W.: *Expert opinion and final verification - Summary and analysis of the project results, conclusions*. Szczecin, 2003
 158. Doerffer J.W.: *Expert opinion and final verification - Co-report on the project results*. Szczecin, 2003
 159. Skrzymowski E.: *Expert opinion and final verification - Co-report on the project results*. Szczecin, 2003.