

Use case driven scheduling method of information technology project

T. GÓRSKI

gorski@wat.edu.pl, tomasz.gorski@rightsolution.pl

Institute of Information Systems
Cybernetics Faculty, Military University of Technology
Kaliskiego Str. 2, 00-908 Warsaw

In this article, requirements-oriented project scheduling method is presented. The method is use-case-oriented and shows how to prioritize use cases and schedule realization of information system. The method can be useful for project managers to plan and manage realization of information system.

Keywords: software engineering, requirements, use-cases, project management

1. Introduction

Managing requirements involves the translation of stakeholder requests into a set of system features. These in turn are detailed into specifications for functional and nonfunctional requirements. Detailed specifications are translated into test procedures, design, and user documentation.

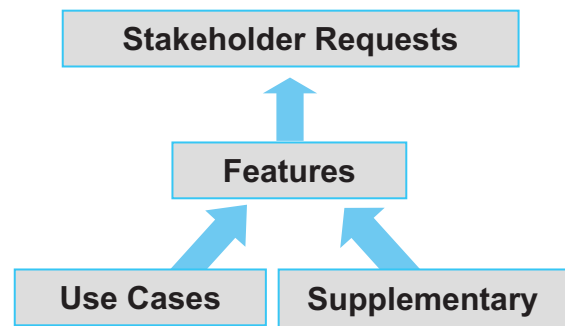
According to Rational Unified Process [1] a requirement describes a condition or capability to which a system must conform, either derived directly from user needs, or stated in a contract, standard, specification, or other formally imposed document.

Requirements specify what the system must do rather than how the system does it. Requirements management is a systematic approach to:

- Eliciting requirements,
- Organizing requirements,
- Documenting requirements,
- Establishing and maintaining agreement between customer/user and the project team on the changing requirements.

A typical form of organizing requirements [8] in types and connecting them with traceability relationship was presented in the Picture 1.

Traceability allows you to determine the origins of any requirement. Software is expensive and difficult to develop. It is, therefore, important that you only deliver a solution that solves the business problem no more and no less.



Picture 1. Typical way of organizing requirements

One of types of requirements is use case. Use cases represent functional requirements on a system. Use cases enable you to relate what you need from a system to how the system delivers on those needs.

A use case describes a sequence of interactions between actors and the system that occur when an actor uses the system to achieve a certain business goal [3].

A use case describes:

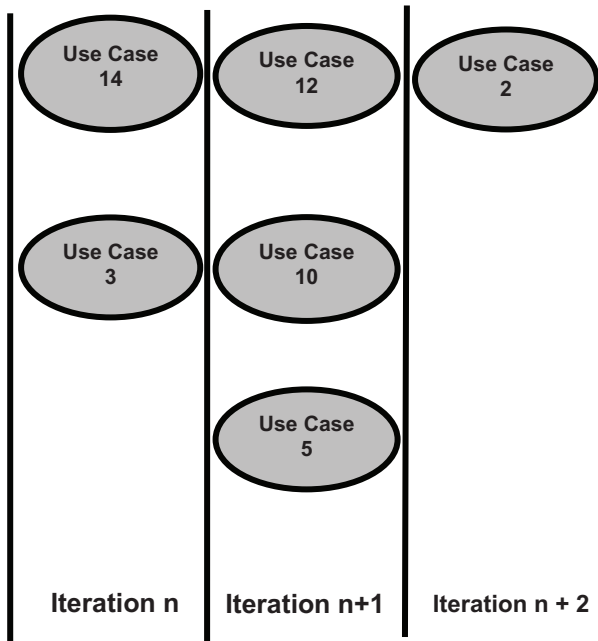
- The system, its environment, and the relationship between them.
- How things outside the system interact with the system.
- The desired behavior for the system.

Use cases are containers for contextually related requirements of the system under development. They are containers because they group all requirements related to achieving a particular goal into a single story of how that is achieved.

During requirements specification use case model is produced. Use case model consists of:

- Use case diagram,
- Use case specification document,
- Supplementary specification.

Because it is a very powerful planning instrument, the use-case model is generally used in all phases of the development cycle by all team members. Use cases are used to plan content of iteration. An example of use cases allocation to iterations was depicted in Picture 2.



Picture 2. An example of use cases allocation to iterations

Benefits of use cases [8]:

- Give context for requirements.
 - ◆ Put system requirements in logical sequences.
 - ◆ Illustrate why the system is needed.
 - ◆ Help verify that all requirements are captured.
- Are easy to understand.
 - ◆ Use terminology that customers and users understand.
 - ◆ Tell concrete stories of system use.
 - ◆ Verify stakeholder understanding.
- Facilitate agreement with customers.
- Facilitate reuse: test, documentation, and design.

As presented in Picture 2 use cases are used to plan iterations. Scheduling method of information technology project proposed in that paper shows how to allocate use cases to specific iterations.

2. The scheduling method

Use cases are described by set of attributes. Attributes which describe an use case could be divided into two groups:

- Describing qualities of use case,
- Used to use case management.

Attributes describing qualities of use case could be following:

- **Benefit** – use case importance for stakeholders. Values: Critical, Important, Useful.
- **Effort** – could be expressed in terms of number of work weeks of development team.
- **Technical risk** – realization risk connected with used technologies. Values: High, Medium, Low.
- **Stability** – describes level of volatility of requirement. Values: High, Medium, Low.
- **Cost** – costs connected with use case realization which can be expressed in money.

Attributes used to use case management:

- **Status** – formal state of requirement. Values: proposed, approved and incorporated.
- **Planned iteration** – stores number of planned iteration in which specific use case should be incorporated.
- **Number in iteration** – stores number of use case in planned iteration sequence,
- **Origin** – this attribute is used to store information about feature which is realized by this use case.
- **Assigned to** – a person or team who is responsible for use case realization.

Attributes of use cases are usually presented in form of attribute matrix. In the picture 3 attribute matrix was depicted for several use cases.

	Status	Risk	Priority	Effort	Cost
UC 10	Approved	Low	High	3 weeks	40000
UC 13	Proposed	Medium	Low	1 week	15000
UC 40	Approved	High	High	2 weeks	25000

Picture 3. An example of attribute matrix for use cases

In order to apply the method, values of attributes should be numbers from the range $\langle 0,1 \rangle$. For attributes whose values are not numbers were set numerical values which correspond to textual ones.

Following values were set for attributes:

Benefit:

- Critical - 0.9,
- Important - 0.5,
- Useful - 0.2,

Technical risk:

- High - 0.9,
- Medium - 0.5,
- Low - 0.2,

Stability:

- High - 0.9,
- Medium - 0.5,
- Low - 0.2.

In the method certain rule was applied: for attributes with highest importance (Critical, High) was established numerical value 0.9, for attributes with middle importance (Important, Medium) was set numerical value 0.5 and for attributes with the lowest importance (Useful, Low) was defined numerical value 0.2.

Below example of attribute matrix with numerical values of attributes was presented.

	Risk	Stability	Effort	Cost
UC10	0.2	0.9	3	40000
UC13	0.5	0.2	1	15000
UC18	0.5	0.9	2	22000
UC27	0.2	0.2	4	43000
UC39	0.2	0.9	4	45000
UC40	0.9	0.9	2	25000

Picture 4. An example of attribute matrix for use cases with numerical attributes values

Hardly ever, do we have situation when a project manager depends on value of one attribute. More common case is when many factors have impact on project manager's decisions.

A project manager is definitely interested in:

- Quickest delivery of maximum system's functionality which is crucial for customer,
- Minimizing effort, technical risk and costs.

It is also important that the most stable use cases should be realize first. Hence, if we want to schedule use cases then we have to use many criterions of selection. In that case we deal with multi-criterion optimization.

Among multi-criterion optimization methods can be enumerated [6]:

- Pareto optimization,

- Mini-max methods,
- Method of consecutive resignations,
- Coefficients' importance method.

In proposed scheduling method of information technology project, coefficients' importance method was applied. Below was presented proposed scheduling method with application of selected optimization method to allocate use case to iterations.

First we should define vector of criterions (attributes which describe use case qualities), where M is number of attributes.

$$O = \langle a_1, a_2, \dots, a_m, \dots, a_M \rangle, m = \overline{1, M}, \quad (1)$$

Furthermore, we should identify set of a project use cases P which consists of elements $p_k \in P, k = \overline{1, K}$, where K is number of use cases.

$$p_k = \langle a_1, a_2, \dots, a_m, \dots, a_M \rangle, k \geq 2, M \geq 2, \quad (2)$$

We have to normalize values of all criterions a_m to normalized values a_m^N within range $\langle 0,1 \rangle$

$$a_m^N = \frac{a_m - a_{m \min}}{a_{m \max} - a_{m \min}}, \quad (3)$$

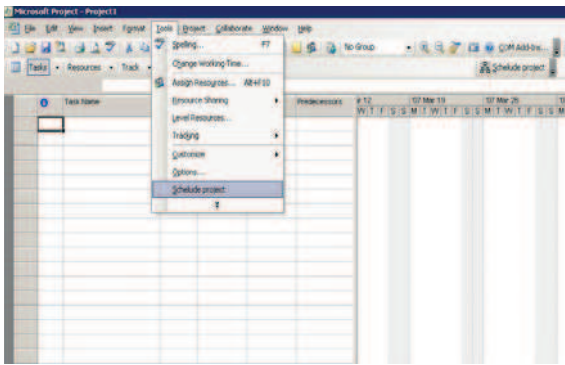
Considered normalization of criterions' values a_m is indispensable so as to all criterions have identical domain.

Next, we have to determine importance coefficients f_m for each criterion

$$\langle f_1, f_2, \dots, f_m, \dots, f_M \rangle, \text{ where } \sum_{i=1}^M f_i = 1, \quad (4)$$

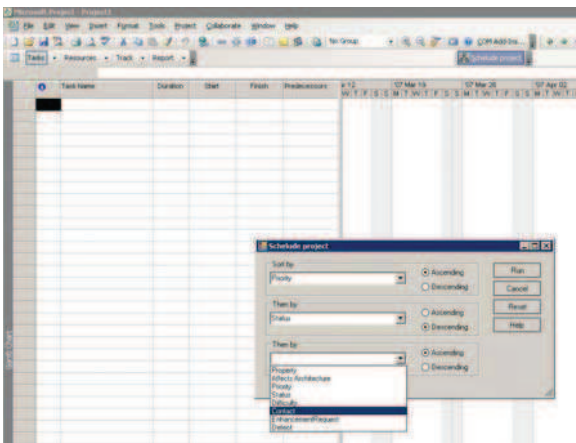
Importance coefficients for individual criterions are set subjectively. Those coefficients define importance degree of criterion participation in final result. In order to present results in percents, sum of all coefficients must be equal 1 and normalized range of criterions' values must be $\langle 0,1 \rangle$.

In the following step, value of factor A_m should be determined for each criterion. Factor A_m defines criterion's influence on use case assessment. This factor can increase value of assessment (maximizes an assessment) or decrease value of assessment (minimize an assessment).



Picture 10. Added scheduling functionality to Microsoft Project

In that add-in whole logic of scheduling method was designed and developed. Data about use cases are retrieved from IBM Rational RequisitePro by means of API RequisitePro Extensibility Interface (RPX) which is part of designed add-in. This add-in allows project manager to select use cases' attributes to schedule a project (Picture 11).



Picture 11. Form for attributes selection to schedule a project in MS Project

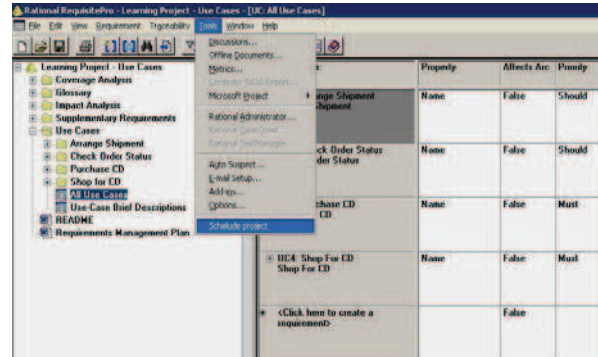
As a subject of allocation are only considered use cases which have attribute Status set to value "Approved". In that moment, task of multi-criterion optimization is run. As a result we will get vector of scheduled use cases VP.

Next, taking into consideration a duration time of iteration Tit and values of attribute Effort, allocation of use cases from VP to specific iterations is being done (vectors VIm). As a result, values of two attributes, for each considered use case, are changed: Planned iteration and Number in iteration.

Scheduled use cases are shown in Microsoft Project in the form of tasks' list and Gantt's chart. This kind of solution does not require

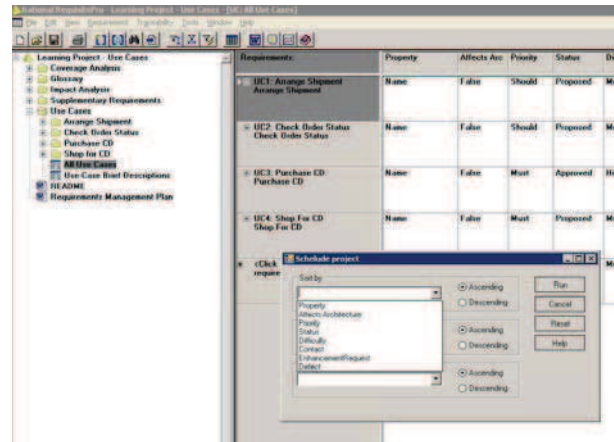
opening IBM Rational RequisitePro which requires using of license.

Microsoft Project and scheduling function could also be started from IBM Rational RequisitePro by using, described above, add-in (Picture 12).



Picture 12. Added scheduling functionality to IBM Rational RequisitePro

So, designed add-in allows selection of use cases' attributes to sort use cases and their allocation to iterations also from IBM Rational RequisitePro environment (Picture 13).



Picture 13. Form for attributes selection to schedule a project in RequisitePro

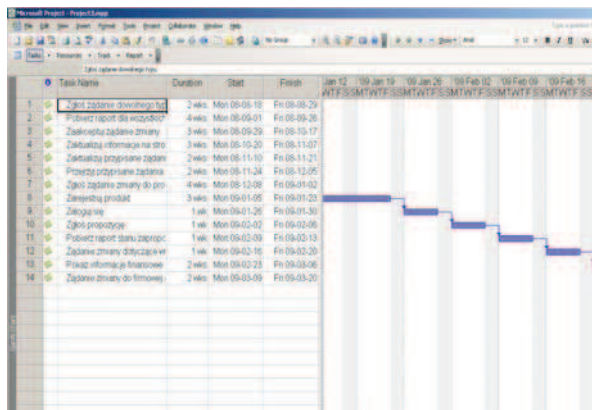
As a result of scheduling a project are filled values of attributes: Planned iteration and Number in iteration. Values of these attributes are stored in IBM Rational RequisitePro project. It should be emphasized that the method takes into consideration only those use cases for which value of attribute Status is set to "Approved".

In the Picture 14 attribute matrix of example project with scheduled use cases was presented. Attributes filled by scheduling application were encircled with dashed rectangle.

Requisyty	Status	Kategorie	Wzajemna w	Stabiln	Ryzyko	Planowa #	Realizacja #
1-FIN Str 0						2-FIN SEA	3-FIN SEA
UC1: Zgłoś zgłoszenie dowolnego typu	Zawieszony	Ważny	Wysokie	Wysokie	Srednie	2	1
UC10: Pobierz raport dla wszystkich zgłoszeń zmian	Zawieszony	Krytyczny	Srednie	Srednie	Srednie	1	0
UC9: zaakceptuj zgłoszenie zmiany	Zawieszony	Ważny	Srednie	Srednie	Srednie	2	1
UC13: Zaktualizuj informacje na stronie sieciowej	Zawieszony	Początkowy	Srednie	Wysokie	Srednie	2	2
UC17: Zaktualizuj przypisane zgłoszenia zmian	Zawieszony	Ważny	Srednie	Wysokie	Srednie	2	1
UC16: Powstrzymaj przypisanie zgłoszenia zmian	Zawieszony	Krytyczny	Srednie	Wysokie	Wysokie	3	2
UC14: Zgłoś zgłoszenie zmiany do produktu	Zawieszony	Ważny	Srednie	Wysokie	Srednie	3	2
UC4: Zarejestruj produkt	Zawieszony	Ważny	Krytyczny	Niska	Srednie	4	1
UC2: Zaloguj się	Zawieszony	Ważny	Srednie	Srednie	Srednie	4	2
UC1: zgłoś propozycję	Zawieszony	Krytyczny	Krytyczny	Niska	Wysokie	5	1
UC5: Pobierz raport stanu zapasów magazynowych ukończonych	Zawieszony	Krytyczny	Wysokie	Srednie	Niska	5	2
UC8: Zgłoś zmiany dotyczące wyłączenia nowego produktu	Zawieszony	Krytyczny	Srednie	Srednie	Niska	5	3
UC7: Pokaż informacje finansowe ukończone zgłoszenia zmian	Zawieszony	Ważny	Wysokie	Niska	Niska	5	4
UC3: Zgłoś zmiany do finansowej aplikacji	Zawieszony	Ważny	Wysokie	Srednie	Niska	5	5
UC12: Pisz kod danych do systemu finansowego	Zaplanowany	Ważny	Krytyczny	Srednie	Srednie		
UC15: Zaktualizuj zgłoszenia zmian	Zaplanowany	Ważny	Srednie	Srednie	Srednie	1	
UC18: Zgłoś propozycję ukończenia gry	Zaplanowany	Ważny	Srednie	Srednie	Srednie	4	
Click here to create a requirement	Zaplanowany	Ważny	Srednie	Srednie	Srednie		

Picture 14. Attributes filled by scheduling application

Furthermore, designed add-in creates Gantt diagram in Microsoft Project. This diagram is based on use cases and values of attributes Planned iteration and Number in iteration. In the picture 15 example of Gantt diagram created by scheduling application was presented.



Picture 15. Gantt diagram for example project

5. Summary

This kind of scheduling method, implemented in commercially available tool, appears to be one of the most desired supporting tools for project managers. It gives them content-related input for project planning. Moreover project manager is able to benefit from that method during the whole project. It is common knowledge that intrinsic part of information technology project is change. In case of change, thanks to proposed method, a project manager can reassess values of attributes and dynamically change schedule of specific project.

It is worth mentioning that due to simplicity of the method implemented application operates very fast and generates Gantt diagram within few seconds.

6. References

- [1] Kruchten P. – *Rational Unified Process - the introduction*, Addison-Wesley, 1999, ISBN 0201604590
- [2] Eeles P., Houston K., Kozaczyński W. – *Building J2EE applications with the Rational Unified Process*, Addison-Wesley, 2003, ISBN 0-201-79166-8
- [3] Cockburn A. – *Writing effective use cases*, Addison-Wesley, 2001
- [4] Leffingwell D., Widrig D. – *Managing software requirements. A unified approach.*, Addison-Wesley, 2000
- [5] Kruchten P. – *What is the Rational Unified Process?*, 2003
- [6] Roy B. – *Wielokryterialne wspomaganie decyzji* (Multicriterial decision aid), WNT, Warszawa 1990, ISBN 83-204-1119-X
- [7] Górski T. – “Requirement-driven software engineering process”, V Polish Conference of IBM Rational Technology Users, Software People Engineering, 22nd April 2005, Warsaw
- [8] *Mastering of requirements management with use cases*, IBM Materials, 2003
- [9] Górski T. – “Scheduling method of information technology project”, International Conference, Information Management, IM/HCI 2007, Jurata, 12- 14 June, 2007.