

ERRATUM

The Editorial Board of *Annales Societatis Geologorum Poloniae* would like to apologize for unintentional misprinting of the map, in article: S. Leszczyński & E. Malata – Sedimentary conditions in the Siary zone of the Magura basin (Carpathian) in the late Eocene–early Oligocene, printed in *Annales Societatis Geologorum Poloniae*, vol. 72, no. 3: 201–239. The corrected version of this map is reproduced below.

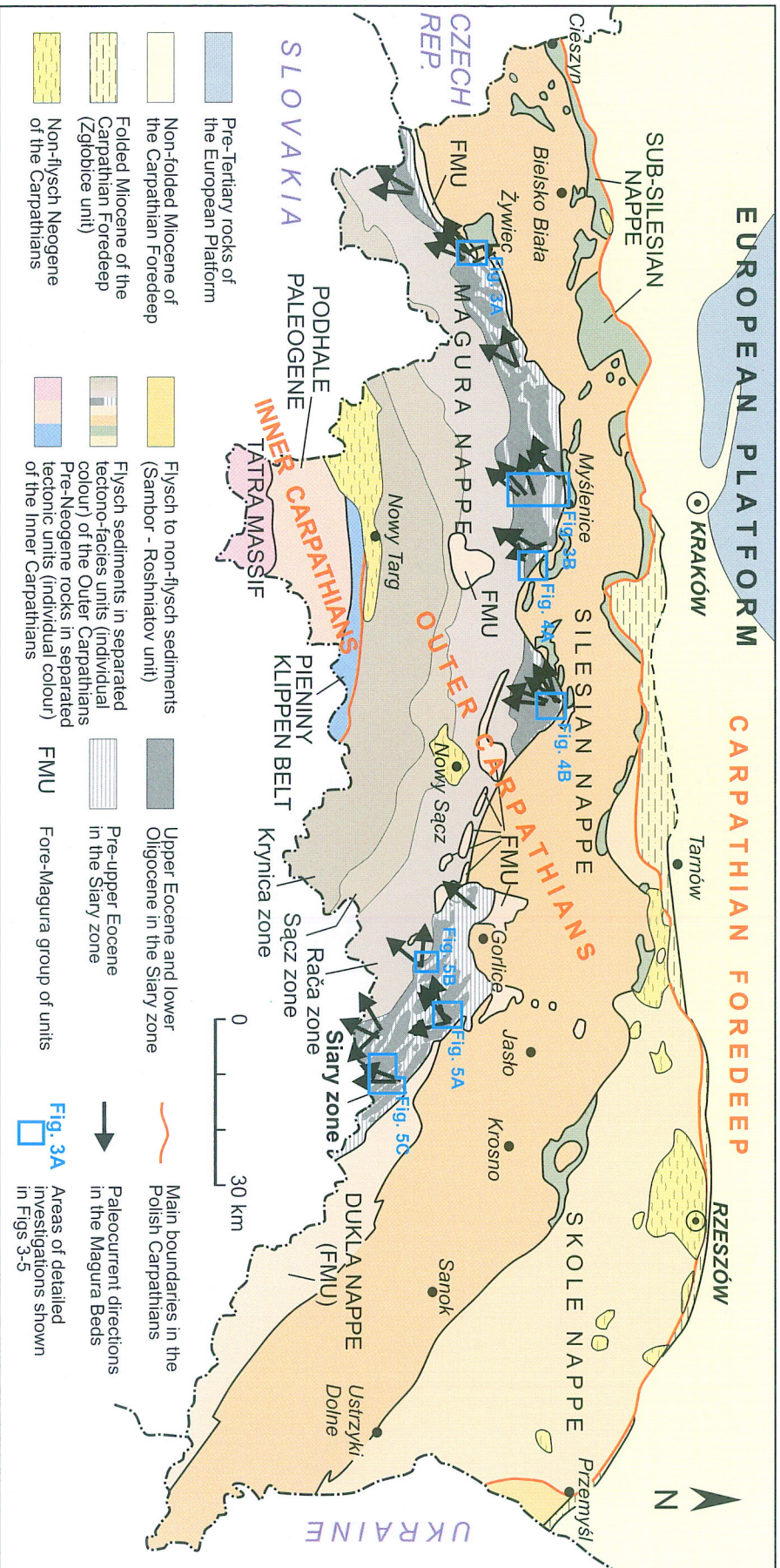


Fig. 1. Regional and structural context of the study area according to the Tectonic Map of Poland (Znosko, ed., 1998) with Leszczyński's modifications for the southern boundary of the Siary zone