

NEOTECTONIC STRUCTURES OF THE UPPER SILESIAN REGION, SOUTHERN POLAND

Józef Lewandowski

*University of Silesia, Faculty of Earth Sciences, Będzińska 60, 41-200 Sosnowiec,
e-mail: jlewando@wnoz.us.edu.pl*

Abstract

Neotectonic structures of the Upper Silesia that originated during the last 5 Ma (Pliocene and Quaternary) overlap Miocene grabens and horsts of the Carpathian Foredeep. They had been reactivated in Pliocene as an effect of the young Alpine uplift of the Carpathian Foredeep. It is postulated that ice-sheet derived compaction of a thick Miocene deposits was the most significant agent of the development of neotectonic depressions. Glacioisostasy of mobile bedrock structures was presumably also an important component of vertical movements. The amplitude of neotectonic movements is estimated to 40–100 m, basing on DEM map analysis, analysis of sub-Quaternary structural maps, and the Pleistocene cover thickness. The present-day tectonic phenomena are generated by mining-induced seismicity. These are connected with stress relaxation in the deep bedrock thrust zones of the Upper Silesian Coal Basin.

sq

Key words: neotectonic structures, glacioisostatic movements, tectonic fracture zones, induced seismicity, Carpathian Foredeep, Upper Silesian Coal Basin (USCB)

INTRODUCTION

Tectonic structures of the upper Silesian region were the object of numerous publications, presenting diversified ideas. Some authors claimed that the role of Young Alpine–Neogene tectonic movements was insignificant (Jurczka, Kotas 1985) whereas the others tried to prove intensive faulting within marine strata of the Carpathian Foredeep (Alexandrowicz 1964), as well as the presence of analogous phenomena in Quaternary sediments and landforms (Dyjur *et al.* 1978, Kotlicka 1979, 1981, Lewandowski 1995). Some present-day tectonic movements are also observed. These are connected with ongoing mining that generates induced seismicity (Idziak *et al.* 1999, Teper *et al.* 1992, Teper 1998). Diversity of the existing theories is caused in large part by differences in understanding the term “neotectonics” (*vide* Zuchiewicz 2002), and also by incorrect evaluations of the amplitude of neotectonic movements and their relation to that of the older structures of Variscan, Laramide and Miocene age. Most of these problems are attributed to a well-known, widespread phenomenon of recurrence and rejuvenation of tectonic structures (*vide* Ostaficzuk 1995).

METHODS

Analyses of thickness differentiation of Pleistocene deposits and their facies changes against the sub-Quaternary tectonic structures are the main tools in discovering young (younger than Miocene) tectonic phenomena in the Upper Silesia (Lewandowski 1995, Jura, Małolepszy 1999). Satis-

factory results can be obtained from geomorphological studies based on the shadowed DEM method (*cf.* Ostaficzuk, 2003) (Fig. 1) and condensed countourlines method (Fig. 2). Present-day tectonic movements can be studied by precise levelling, SAR interferometry as well as by monitoring of contemporary and historic seismicity of the area (Teper 1998, Perski 1999, 2000).

Nevertheless an analysis of the sub-Quaternary surface in relation to thickness of Quaternary deposits and their facies changes remains the most unbiased criterion for estimating neotectonic subsidence, especially in the area of the Carpathian Foredeep. The sub-Quaternary surface is of erosional-depositional type, upon which however, some tectonic elements can be traced, for instance, isolated depressions situated in the zones of Neogene grabens (Figs. 3, 4).

The origin of neotectonic depressions is presumably connected with postdepositional compaction of sandy-silty Miocene strata, the thickness of which attains 300–500 m in the graben zones. The above-mentioned compaction could have been induced by ice-sheet loading, especially during the South-Polish Glaciations. The rate of compaction in Western Carpathians is estimated at 50–100 m (Oszympko *et al.* 1993), whereas the analogous estimation for the Carpathian Foredeep is at least 20–30 m. Longitudinal profiles of solid bedrock within fossil valleys, like pre-Odra (Lewandowski 1988) and pre-Vistula (Lewandowski 2003), can also serve as a basis for subsidence assessment. The rate of Pliocene–Quaternary subsidence of the Racibórz–Oświęcim Basin is *ca.* 60–80 m (*cf.* Rączkowi *et al.* 1985).

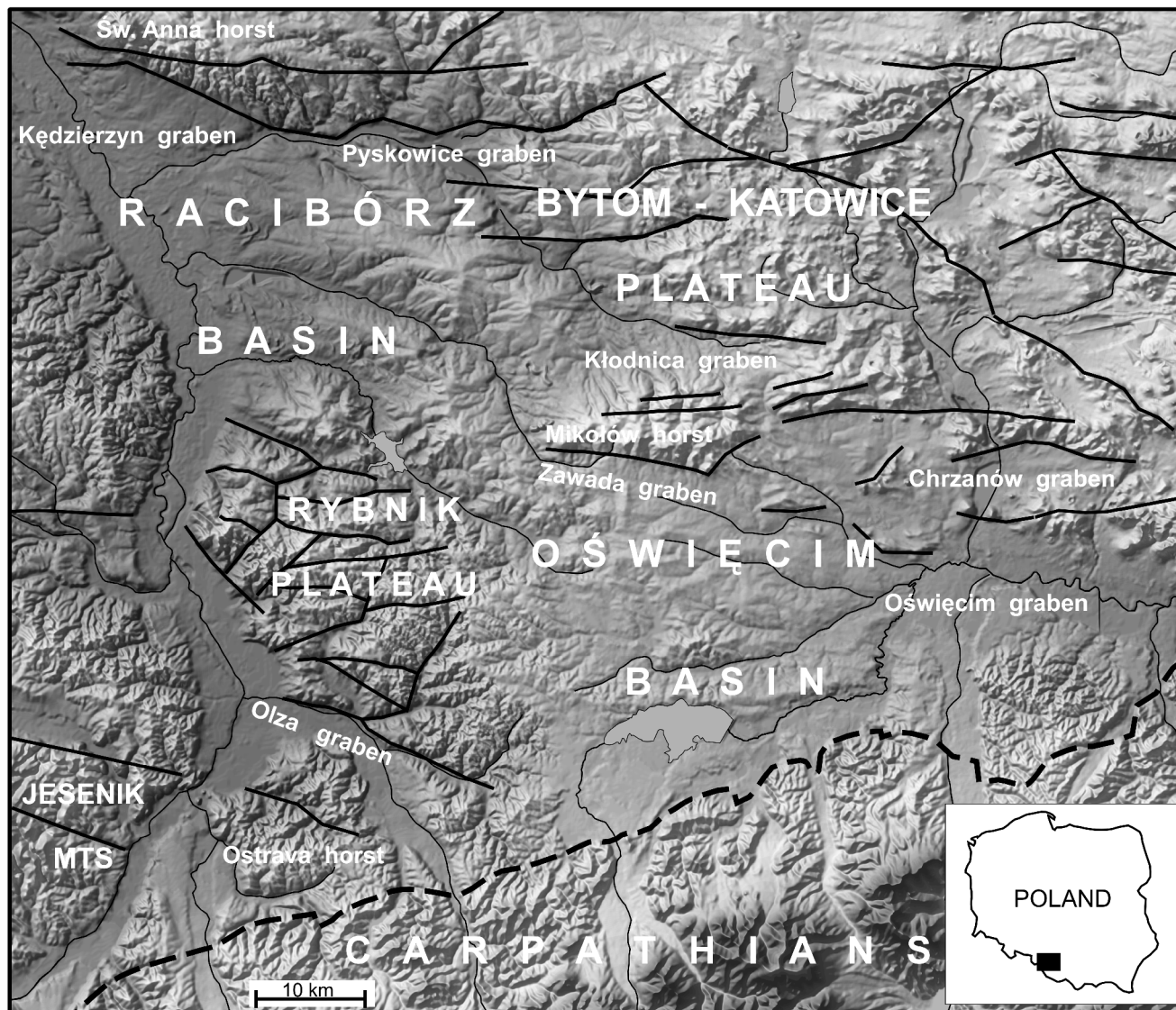


Fig. 1. Digital elevation model (DEM) of the Upper Silesian region with the main Miocene faults rejuvenated during Quaternary and Carpathian margin thrust.

MAIN NEOTECTONIC STRUCTURES

The Upper Silesia region is placed within two main structural units of the Alpine complex: the western part of the Carpathian Foredeep in the south and the Silesian-Cracow Monocline in the north. The Alpine units partly overlie the older Variscan structures: the centrally located Upper Silesian Coal Basin bordered by the Bohemian Massif in the south-west and Małopolska Massif in the north-east, together with the so-called Cracow Fold Zone (Bukowy 1974). The main fracture zone between the Silesian Coal Basin and Małopolska Massif is a sinistral strike-slip fault, an element of the Teisseyre-Tornqvist Zone (Żaba 1995).

In the interior as well as on peripheries of the Carpathian Foredeep, the W–E oriented grabens of Neogene age, rejuvenated in Quaternary, are common (Fig. 5). The Kędzierzyn, Pyskowice, Kłodnica, Zawada, Szeroka and Oświęcim grabens are the biggest (Kleczkowski *et al.* 1972, Dyjor 1987,

Lewandowski 1995, 2000). Sedimentary infills of these grabens are frequently thicker than 100 m, whereas average thickness of the Pleistocene cover reaches 30–40 m in the Racibórz-Oświęcim Basin. The Kłodnica Graben in the Upper Silesian Coal Basin is one of the best-recognised neotectonic structures of this type, with nearly complete Pleistocene–Holocene sedimentary succession (Fig. 4) thicker than 100 m (Lewandowski 2000). Since the Early Pleistocene the above-mentioned grabens have served as valleys of the pre-Odra River drainage basin. West from the Cracow Upland, the Carpathian Foredeep and the Silesian and Żywiec Beskid Mts. were drained towards NW during the Pliocene and Early Pleistocene (Klimek 1972, Lewandowski 1993). The thickness of alluvial deposits within grabens is often greater than 60–80 m, whereas in the gorge-like zones the same deposits are nearly two-times thinner (Fig. 3).

The Św. Anna Mt., Mikołów, Rydułtowy, Jastrzębie and other horsts (see Fig. 5) accompany the above mentioned

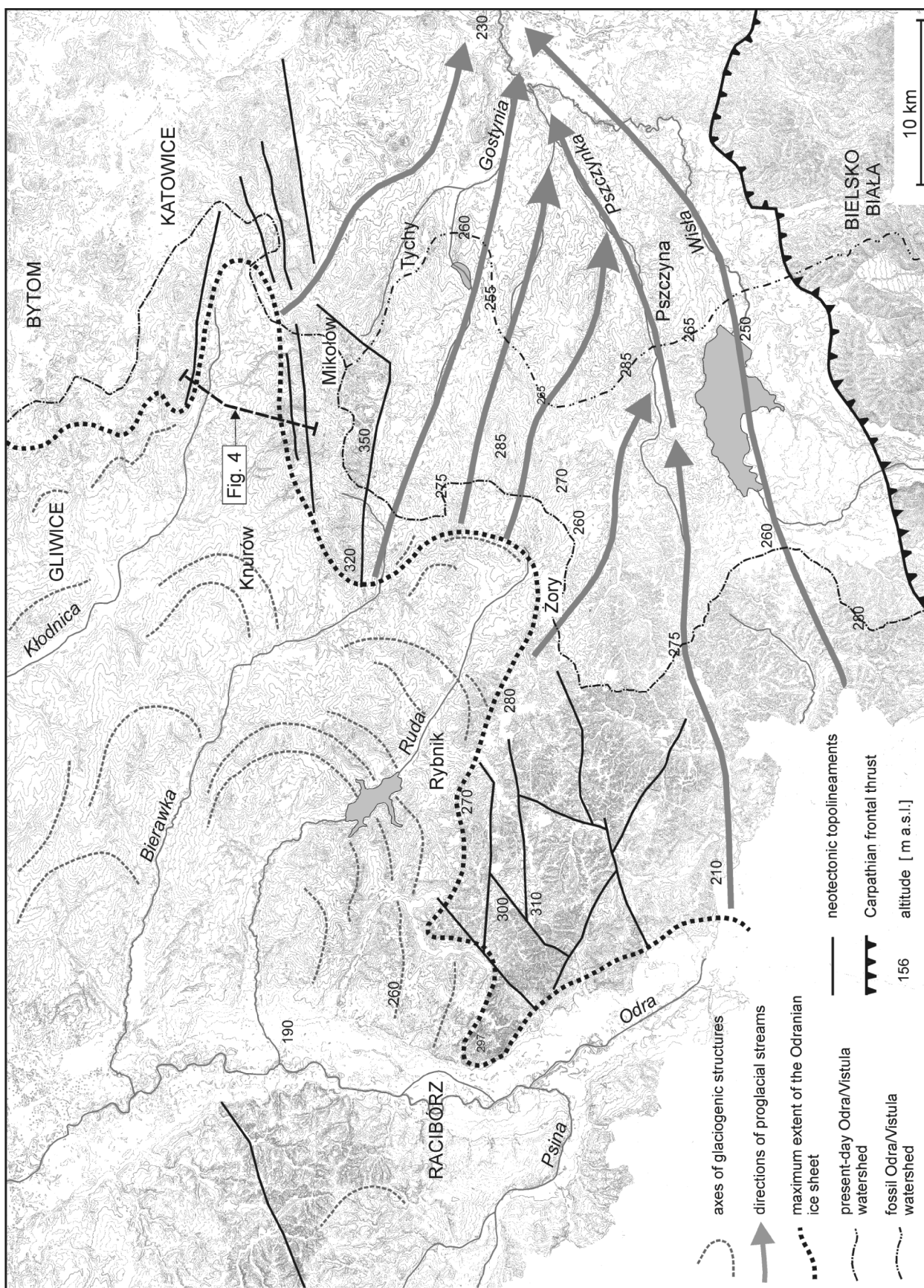


Fig. 2. Present-day Upper Silesian topography analysed by condensed countourlines method.

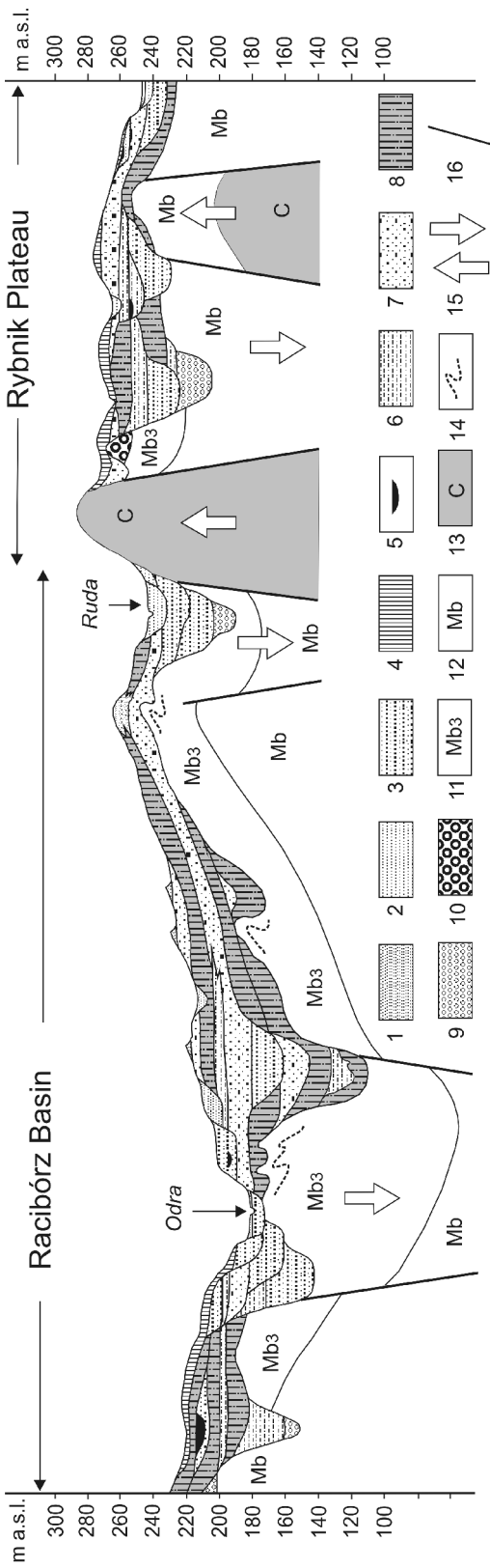


Fig. 3. Synthetic geological cross-section of the Racibórz-Oświęcim Basin and Rybnik Plateau. 1 – aeolian sands, 2 – alluvial sands, 3 – alluvial sands and gravels, 4 – loess, 5 – peat, 6 – glaciolacustrine silts and clays, 7 – glaciofluvial sands and gravels, 8 – tills, 9 – preglacial sands and gravels (Eopleistocene), 10 – Pliocene (Upper Miocene?) proluvial gravels and sands (Sośnicowice Formation), 11 – Upper Miocene clays and sands (Kędzierzyn beds), 12 – Badenian clays (mainly Gliwice beds), 13 – Carboniferous rocks, 14 – glaciotectionic deformations, 15 – neotectonic uplift and subsidence, 16 – faults.

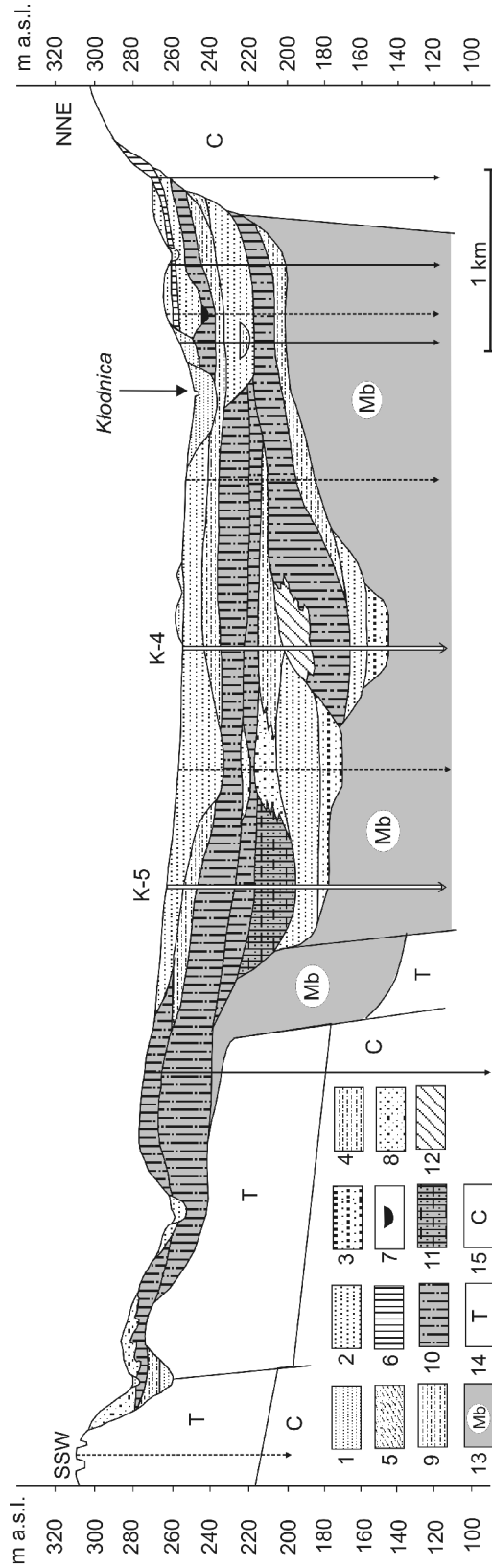


Fig. 4. Geological cross-section through the Kłodnica Graben Quaternary infill. 1 – aeolian sands, 2 – alluvial sands, 3 – alluvial sands and gravels, 4 – alluvial sands with silt intercalations, 5 – silty, loess-like till, 6 – loess, 7 – peat, 8 – glaciofluvial sands and gravels, 9 – glaciolacustrine silts and clays, 10 – silty tills, 11 – clayey tills, 12 – glacial xenoliths of Miocene deposits 13 – Miocene (Badenian) siltstones and claystones, 14 – Triassic rocks, 15 – Carboniferous rocks.

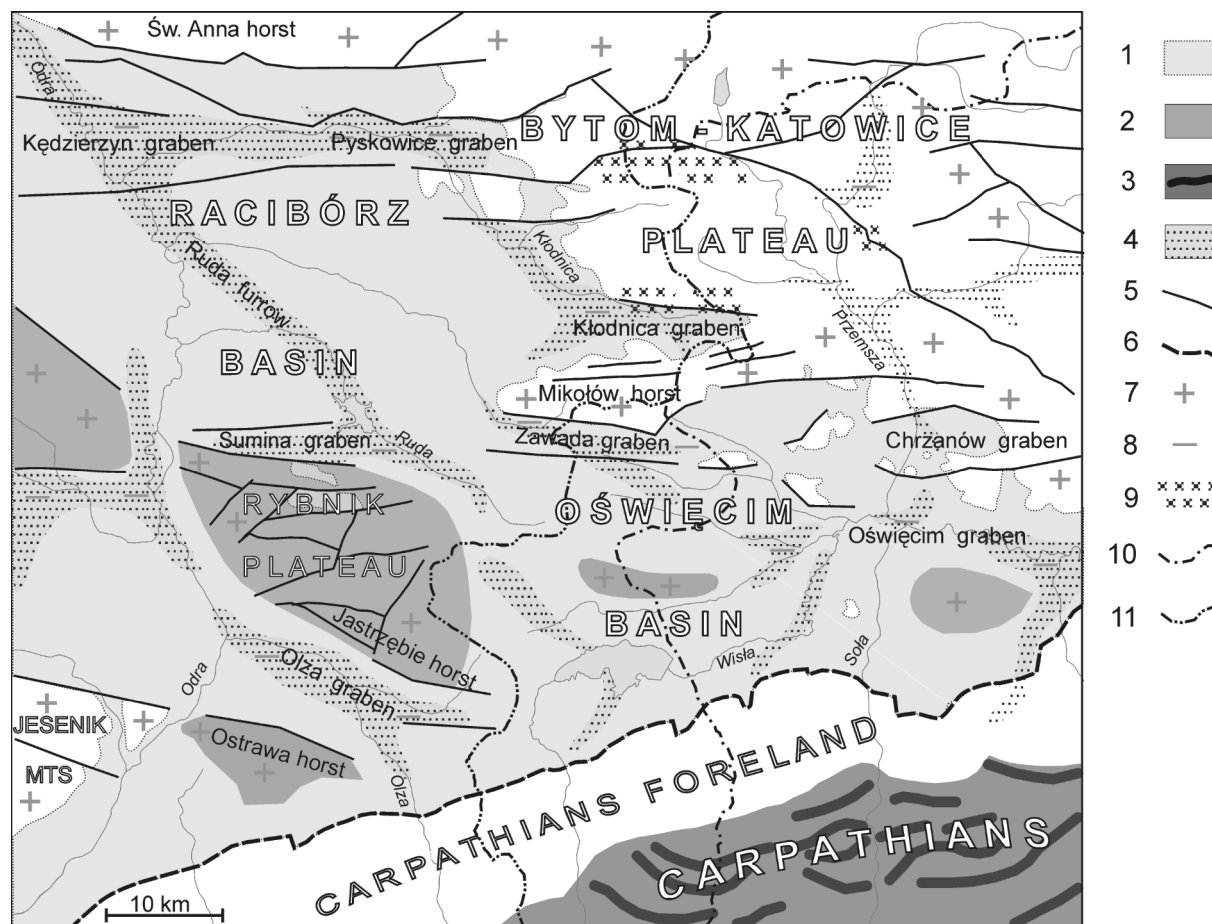


Fig. 5. Neotectonic sketch of the southern part of the Upper Silesia region and surroundings: 1 – Miocene marine strata of the Carpathian Foredeep, 2 – neotectonically uplifted main ridges of the Carpathian Foredeep, 3 – Carpathians and their principal ridges, 4 – Pleistocene cover thicker than 60–120 m, 5 – the main Neogene faults rejuvenated in Pleistocene, 6 – Carpathian frontal thrust, 7 – neotectonically uplifted areas, 8 – neotectonically lowered areas, 9 – areas with seismic activity, 10 – fossil Odra/Vistula watershed of Middle Pleistocene age, 11 – present-day Odra/Vistula watershed.

grabens. The Quaternary cover upon these horsts is completely reduced. Their morphogenesis of these structures is usually linked with development of the Carpathian Foredeep or with geomorphic evolution of the Tethys coastal block-mountains during the Laramide polyphase, modified by young-Alpine orogenic phases (Jura 2001). Nevertheless the present-day erosional topography is characterised by evident tectonic scarps. These faults were presumably rejuvenated by glacioisostatic movements during the Quaternary (Liszkowski 1982, 1993), as suggested by reduced thickness of glacial sediments upon horsts (Fig 2; Lewandowski 1995, 2003). The amplitude of Pliocene–Quaternary uplift in the Upper Silesia region is estimated at 30–40 m, thus the total maximum difference between the positive and negative movements must have attained 100–120 m.

The results of neotectonic uplift are especially well expressed in the Cracow-Wieluń Upland, which is located to the east of the Upper Silesia region, in its closest neighbourhood. These are indicated by the Neogene and Pleistocene karst-derived deposits as well as caves noted at different geomorphic levels (Gradziński 1962, Madeyska 1977, Głazek, Szykiewicz 1978, Lewandowski, Ciesielczuk 1996). This conclusion is supported by contemporaneous and fossil to-

pography of Late Jurassic limestones (Tomalkiewicz 1975, Szubert 1993, 1998, Nowak 1993). The late Pleistocene rejuvenation of Krzeszowice Graben scarps was favoured by the fact that relatively young (Vistulian) slope covers are present there, whereas deposits of older glaciations are lacking (Pawelec 2005). The Cracow-Wieluń Upland underwent step-like uplift during the Neogene and Quaternary, the scale of uplift increasing in southwards, and reaching a maximum value at least 150 m in vicinity of Cracow (cf. Zuchiewicz, 2000).

YOUNG ALPINE TECTONIC PHASES

It is well known that grabens and horsts were formed along a second-order crustal fault during the post-Variscan tectonic phases. Unlike Variscan structures, the young Alpine faults are oriented W–E (Bukowy 1974, Kotas 1985, Jura 1995). Most opinions assume that thrust tectonics of the Silesian-Cracow region was connected with pre-Badenian movements. The younger Alpine phases were most probably of secondary character and marginal influence on the origin of tectonic structures (Dzulyński 1953, Bogacz 1967, Radwański 1968, Bukowy 1974). Such features like: ero-

sional character of the sub-Miocene surface and lack of faults in Miocene strata (Jura 1992, 2001) are especially suggestive for such an interpretation. Aleksandrowicz (1964) expressed a different opinion, maintaining that tectonic movements took place simultaneously with the Miocene deposition. This interpretation is proved by preservation of deposits of the same age at different levels, and by the presence of Badenian fault breccias. The Late Miocene – Sarmatian age of block tectonics in the “Cracow Bolt” was suggested by Gradziński (1962) and Rutkowski (1986, 1989). Poly-cyclic development of morphotectonic structures of sub-Miocene surface in the Upper Silesian Coal Basin was suggested by Jura (2001). In his opinion the Tethys coastal block-mountains, 500–1000 m high, were formed close to the ocean shore during block-like movements of the Laramide polyphase. These were subsequently modified during several tectonic stages, and followed by molasse sedimentation in the Middle Miocene. In the final stage (“Styrian” and “Moldavian” phases), a system of step faults was formed on the sub-Miocene surface (Jura 2001).

A much younger age of the development of the sub-Miocene surface was inferred by Lewandowski (1993, 1996). An analysis of the structural pattern of the Carpathian Foredeep (Ney *et al.* 1974, Połtowicz 1993) and Meta-Carpathian Swell suggests that differences in levels of Late Paleogene peneplane, from several hundred metres to at least 1000 m, is definitely of tectonic origin (Lewandowski 1993). The main phase of block tectonics on the foreland of folding Carpathians resulted in subsidence of the Carpathian Foredeep and coeval compensational uplift of distal Meta-Carpathian Swell (Oszczypko, Tomasz 1985, Bajgier 1998). These movements took place during the Styrian, Moldavian and Attican “phases” of Middle and Late Miocene age. Secondary movements of much smaller scale had amplitude up to a few tens of meters, and took place in Pliocene (the “Rhone”, and “Vallachian” phases). This statement is supported by the results of neotectonic studies in the Western Carpathians (Zuchiewicz, 1998), Sudetes and the Sudetic Foreland (Oberc, Dyjor 1968; Badura, Przybylski 1995a, 1995b, 2000).

PRESENT-DAY TECTONIC MOVEMENTS

Extensive research has recently been carried out into mining-controlled seismic phenomena, *i.e.* “induced seismicity” (Czarniecka 1988, Idziak *et al.* 1999, Teper 1998, Teper *et al.* 1992). According to Jureczek and Kotas (1985) the Upper Silesian Coal Basin (USCB) embraces five seismic sub-regions: the Bytom Syncline, Main Anticline, the Kazimierz Syncline, central part of the Main Syncline, and the surrounding of Rybnik. In the Teper’s (1998) opinion the present-day seismicity can be governed by tectonic stress in the zones of large active dislocations (Kłodnica Fault). Teper claims (1998) that the source of this stress is derived either from the Carpathian orogen pressure or active fractures in Carboniferous bedrock. One of such fractures is traced along the 50°N latitude (Kutina 1974). Rejuvenation of faults is usually connected with mining-derived strain of rock mass. Epicentres of seismic shocks are dispersed irregularly over the Upper Silesian Coal Basin (Fig. 5); therefore some Upper

Silesian regions are geodynamically unstable. This conclusion results from structural and fractal analyses of fault network pointing to the presence of seismogenic structures in northern part of the Upper Silesian Coal Basin (Teper 1998). These are two thrusts located between the Bytom and Central blocks, *i.e.* the Kłodnica Fault and the axial zone of the Bytom Syncline.

Apart from vertical movements some horizontal neotectonic movements are also presumed in the USCB. The N–S compression and NE–SW simple shear causing sinistral rotation in the present-day stress-field (Jura 1995, 2001) are interpreted from the results of morphometric analysis of the sub-Quaternary surface of the Carpathian Foredeep, together with its relationship to young Alpine tectonic structures. The source of this phenomenon originates from eastward shift of the Western Carpathians in relation to the Carpathian Foredeep. This movement is indicated by the presence of asymmetric depression of the pull-apart type. Jura (1995, 2001) claims that 50 m of subsidence is a result of compensation of isostatic displacements in the contact zone between the Carpathians and marginal grabens.

Subsidence is ubiquitous in the Upper Silesian region, where extensive coal mining started about two centuries ago. The largest subsidence troughs, 20–30 m deep, are noted in surrounding of Bytom, Knurów and Rybnik. The scale of these movements is estimated by precise levelling (Kowalczyk 1969), and SAR interferometer (Perski 1999, 2000). Mining-derived subsidence, together with other anthropogenic land changes, is a good measure of present-day vertical movements of the Upper Silesian Coal Basin compared to the other areas of Poland (Wyrzykowski 1985, 1990).

Acknowledgements

Preliminary version of this paper was presented at the 6th National Conference “Neotectonics of Poland”, organized in 2005 by the Commission on Neotectonics, Committee on Quaternary Research of the Polish Academy of Sciences, Lower Silesian Branch of the Polish Geological Institute, Institute of Geological Sciences of the Jagiellonian University, and the Galicia T. Group.

REFERENCES

- Aleksandrowicz S.W. 1964. Miocene tectonics in the Upper Silesian Basin *Acta Geologica Polonica* 14, 175–231 (in Polish with English summary).
- Badura J., Przybylski B. 1995a. Neotectonic dependences of the Earths surface of the eastern part of the Sudety Mountains of the concentrated contour map. *Zeszyty Naukowe Akademii Rolniczej we Wrocławiu*, 255, 173–185 (in Polish with English summary).
- Badura J., Przybylski B. 1995b. Neotectonic aspects of the East Sudeten foreland relief. *Przegląd Geologiczny* 43 (9), 762–776 (in Polish with English summary).
- Badura J., Przybylski B. 2000. Neotectonic map of the Lower Silesia (original: Mapa neotektoniczna Dolnego Śląska). Państwowy Instytut Geologiczny, Oddz. Dolnośląski, Wrocław (in Polish).
- Bajgier 1998. The role of geological structure in relief evolution on the eastern slopes of the Silesian Beskid and in the western part of Żywiec Basin. *Zeszyty Naukowe AGH 1523, Kwartalnik Geologia* 19 (1), 1–89 (in Polish with English summary).
- Bogacz K. 1967. The geological structure of the northern border of

- the Krzeszowice Graben. *Prace Geologiczne Komisji Nauk Geologicznych PAN, Oddz. w Krakowie* 41, 1–66 (in Polish with English summary).
- Bukowy S. 1974. Carpathian Foredeep – western part (original: Zapadlisko przedkarpackie – część zachodnia). In Pożaryski W. (ed.) *Budowa geologiczna Polski, IV, Tektonika Wydawnictwa Geologiczne* (in Polish).
- Czarnecka K. 1988. Genesis of tectonic movements in Upper Silesia, Poland. *Journal of Geodynamics* 10, 301–307 (in Polish with English summary).
- Dybor S. 1987. Systems of buried valleys in Western Poland and phases of their development in the Upper Neogene and Eopleistocene. In Jahn A., Dybor S. (eds) *Problemy młodszego neogenu i eoplejstocenu w Polsce*, 85–101. Ossolineum, Wrocław (in Polish with English summary).
- Dybor S., Dendewicz A., Grodzicki A., Sadowski A. 1978. The Neogene and old-Pleistocene sedimentation in the Paczków and Kędzierzyn graben zones, Southern Poland. *Geologia Sudetica* 13 (1), 31–65 (in Polish with English summary).
- Dzuffyński S. 1953. Tectonics of the Kraków Upland southern part. *Acta Geologica Polonica* 3, 325–440 (in Polish with English summary).
- Głazek J., Szykiewicz A. 1978. Stratigraphy of the late Tertiary and Early Quaternary karst deposits in Poland and their paleogeographic implications (original: Stratygrafia młodotrzeciorzędowych i staroczwartorzędowych osadów krasowych oraz ich znaczenie paleogeograficzne). In Jahn A., Dybor S. (eds) *Problemy młodszego neogenu i eoplejstocenu w Polsce*, 113–130. Ossolineum, Wrocław (in Polish).
- Gradziński R. 1962. Origin and development of subterranean karst in the southern part of the Cracow Upland. *Rocznik Polskiego Towarzystwa Geologicznego* 32, 429–487 (in Polish with English summary).
- Idziak A.F., Teper L., Zuberek W.M. 1999. Seismic activity and tectonics of the Upper Silesian Coal Basin. *Prace Naukowe Uniwersytetu Śląskiego* 1793, 1–98 (in Polish with English summary).
- Jura D. 1992. Mountain relief of the Miocene basement of the Jastrzębie vicinity in the Upper Silesia Coal Basin. *Biuletyn Państwowego Instytutu Geologicznego* 368, 5–36 (in Polish with English summary).
- Jura D. 1995. The young-Alpine morphotectonics of the Silesian Carpathian Foredeep and the recent geodynamics of the Upper Silesian Coal Basin. *Technika Poszukiwań Geologicznych, Geosynoptyka i Geotermia* 38 (1), 9–11.
- Jura D. 2001. Morphotectonics and evolution of discordances of different age present in the top surface of the Carboniferous of the Upper Silesia Coal Basin. *Prace Naukowe Uniwersytetu Śląskiego* 1952, 1–176 (in Polish with English summary).
- Jura D., Małolepszy Z. 1999. On the Neogene and Quaternary morphotectonics in the northeastern part of the Silesian and Kraków-Wieluń Uplands. *Technika Poszukiwań Geologicznych, Geosynoptyka i Geotermia* 38 (1), 9–11.
- Jureczka J., Kotas A. 1995. Upper Silesian Coal Basin. In Zdanowski A., Żakowa H. (eds) *The Carboniferous system in Poland*. *Prace Państwowego Instytutu Geologicznego* 148, 164–173.
- Kleczkowski A., Dendewicz A., Dybor S., Kowalski J., Miłkowski M. 1972. Pliocene–Quaternary Rybnik-Koźle Trough and its Hydrogeological Properties. *Bulletin de l'Académie Polonaise, Serie des Sciences de la Terre* 20, 71–83.
- Klimek K. 1972. The Racibórz-Oświęcim Basin (original: Kotlina Raciborsko-Oświęcimska). In Klimaszewski M. (ed.) *Geomorfologia Polski*. T. 1, 116–138. PWN, Warszawa (in Polish).
- Kotlicka G.N. 1979. Neotectonic manifestations in western part Upper Silesia (original: Objawy neotektoniki w zachodniej części Górnego Śląska). *Kwartalnik Geologiczny* 23, 493 (in Polish).
- Kotlicka G.N. 1981. Neotectonics of the Upper Odra Valley. *Biuletyn Instytutu Geologicznego* 321, 165–175 (in Polish with English summary).
- Kowalczyk Z. 1969. Current neotectonic movements within Silesia in the light of geodetic research (original: Współczesne ruchy tektoniczne na terenach Śląska w świetle badań geodezyjnych). *Zeszyty Naukowe AGH* 212, *Kwartalnik Geodezja* 12 (in Polish).
- Kutina J. 1974. The Fifty-north Fracture Zone and its role in metallogeny of central Europe. *Chemie der Erde* 33 (2).
- Lewandowski J. 1988. Middle Pleistocene in the upstream Odra valley region: Moravian Gate – Racibórz Basin (synthetical approach). *Przegląd Geologiczny* 36, 465–474 (in Polish with English summary).
- Lewandowski J. 1993. Sub-Quaternary morphology of the Silesian-Cracow region, South Poland, and its morphogenetic evolution. *Folia Quaternaria* 64, 101–121 (in Polish with English summary).
- Lewandowski J. 1995. Neotectonic structures in the Racibórz-Oświęcim Basin, Upper Silesia, Southern Poland. *Folia Quaternaria* 66, 99–104.
- Lewandowski J. 1996. The main factors of Neogene and Quaternary morphogenetic evolution of the Silesian-Cracow region (S Poland). *Acta Geographica Lodziensia* 71, 131–148 (in Polish with English summary).
- Lewandowski J. 2000. The Pleistocene of the Kłodnica Graben, Upper Silesia region (original: Plejstocen rowu Kłodnicy – region górnośląski). *Prace Wydziału Nauk o Ziemi Uniwersytetu Śląskiego* 8, 41–49 (in Polish).
- Lewandowski J. 2003. The glacial Pleistocene of the Racibórz-Oświęcim Basin and neighbouring areas (original: Plejstocen glacialny Kotliny Raciborsko-Oświęcimskiej i obszarów sąsiednich). In *Przewodnik X Konferencji "Stratygrafia plejstocenu Polski"*, Rudy, 2003 (in Polish).
- Lewandowski J., Ciesielczuk J. 1996. A case to study karst regoliths in the Silesian Upland. *Prace Naukowe Uniwersytetu Śląskiego, Geologia* 14, 139–152 (in Polish with English summary).
- Liszkowski J. 1982. Evolution of recent vertical movements of the Earth's crust in Poland (original: Geneza pola współczesnych pionowych ruchów skorupy ziemskiej na obszarze Polski). *Rozprawy Uniwersytetu Warszawskiego*; 1–179 (in Polish).
- Liszkowski J. 1993. The effects of Pleistocene ice sheet loading-reloading cycles on the bedrock structure of Poland. *Folia Quaternaria* 64, 7–23.
- Madeyska T. 1977. The age differentiation of caves and their sediments of the Saspowska Valley. *Prace Naukowe Uniwersytetu Śląskiego* 185, *Kras i Speleologia* 1, 71–77 (in Polish with English summary).
- Ney R., Burzewski W., Bachleda T., Górecki W., Jakóbczyk K., Słupczyński K. 1974. Outline of the paleogeography and evolution of lithology and facies of Miocene layers in the Carpathian Foredeep. *Prace Geologiczne Komisji Nauk Geologicznych PAN, Oddz. w Krakowie* 82, 1–65 (in Polish with English summary).
- Nowak W.A. 1993. Underground limestone karstification in relief of Kraków-Wieluń Upland in Częstochowa region. *Studia Ośrodka Dokumentacji Fizjograficznej PAN* 21, 9–157 (in Polish with English summary).
- Oberc J., Dybor S. 1968. Young Tertiary movements in the Sudetes. *Przegląd Geologiczny* 16, 493–498 (in Polish with English summary).
- Ostaficzuk S. 1995. Impact of Poland's geological structure on neo-

- geodynamics. *Technika Poszukiwań Geologicznych, Geosynoptyka i Geotermia* 34 (3), 79–107.
- Ostaficzuk S. 2003. The importance of digital terrain elevation model in modern geological mapping. *Technika Poszukiwań Geologicznych, Geosynoptyka i Geotermia* 6, 53–58.
- Oszczypko N., Tomasz A. 1985. Tectonic evolution of marginal part of the Polish Flysch Carpathians in the Middle Miocene. *Kwartalnik Geologiczny* 29, 109–128.
- Oszczypko N., Tomasz A., Zuchiewicz W. 1993. Compaction of Miocene molasses and neotectonic mobility of the Polish Carpathian Foothills. *Przegląd Geologiczny* 41, 411–416 (in Polish with English summary).
- Pawelec H. 2005. Paleoclimatic significance of periglacial slope covers – a study from southern part of the Ojców Plateau, S Poland. *Przegląd Geologiczny* 53, 1051–1057 (in Polish with English summary).
- Perski Z. 1999. Surface subsidence of the Upper Silesian Coal Basin. *Przegląd Geologiczny* 47, 171–174 (in Polish with English summary).
- Perski Z. 2000. Application of SAR interferometry to characterizing the dynamics and extent of mining induced terrain deformations, on exemplified by selected areas in the Upper Silesian Coal Basin (original: Zastosowanie satelitarnej interferometrii radarowej do określania dynamiki i zasięgu górniczych deformacji terenu na przykładzie wybranych obszarów Górnośląskiego Zagłębia Węglowego). *Prace Wydziału Nauk o Ziemi Uniwersytetu Śląskiego* 8, 9–40 (in Polish).
- Połowicz S. 1993. Palinspastic paleogeography reconstruction of Badenian saline sedimentary basin in Poland. *Kwartalnik AGH, Geologia* 19 (4), 203–233 (in Polish with English summary).
- Radwański A. 1968. Lower Torthonian transgression on to the Miechów and Cracow Uplands. *Acta Geologica Polonica* 18, 397–438 (in Polish with English summary).
- Rączkowski W., Wójcik A., Zuchiewicz W. 1985. Neotectonics Sections across the Polish Carpathians. *Acta Geophysica Polonica* 33, 307–319.
- Rutkowski J. 1986. On Tertiary fault tectonics in the vicinities of Cracow. *Przegląd Geologiczny* 10, 587–590 (in Polish with English summary).
- Rutkowski J. 1989. Geological structure of the Cracow region, South Poland. *Przegląd Geologiczny* 6, 302–308 (in Polish with English summary).
- Szubert R. 1993. Fault tectonics of Jurassic strata in the southern part of the Woźniki-Wieluń Upland in the light of correlation of stratigraphic horizons (original: Tektonika uskokowa utworów jurajskich w południowej części Wyżyny Woźnicko-Wieluńskiej w świetle korelacji poziomów stratygraficznych). In Zuchiewicz W. (ed.) *Neotektonika Polski: Metodyka, datowania, przykłady regionalne*, 33–34. Komisja Neotektoniki Komitetu Badań Czwartorzędu PAN, Kraków (in Polish).
- Szubert R. 1998. Influence of tectonics on sub-Quaternary relief in the southern part of the Woźniki-Wieluń Upland (original: Wpływ tektoniki na rzeźbę podczwartorzędową w południowej części Wyżyny Woźnicko-Wieluńskiej). In Pękala K. (ed.) *IV Zjazd Geomorfologów Polskich, Referaty i komunikaty*, 89–96. Wyd. UMCS, Lublin (in Polish).
- Teper L. 1998. Seismotectonics in the Northern Part of the Upper Silesian Coal Basin. *Prace Naukowe Uniwersytetu Śląskiego* 1715, 1–108 (in Polish with English summary).
- Teper L., Idziak A., Sagan G., Zuberek W.M. 1992. New approach to the studies of the relations between tectonics and mining tremors occurrence on example of the Upper Silesian Coal Basin (Poland). *Acta Montana*, Ser. A2 (88), 134–149.
- Tomalkiewicz J. 1975. Morphological consequences of disjunctive tectonics in the relief of the Wieluń Plateau. *Przegląd Geograficzny* 47, 735–749 (in Polish with English summary).
- Wyrzykowski T. 1985. Map of recent vertical crustal movements in Poland (original: Mapa prędkości współczesnych pionowych ruchów powierzchni skorupy ziemskiej na obszarze Polski. Instytut Geodezji i Kartografii, Warszawa (in Polish).
- Wyrzykowski T. 1990. Maps of the contemporary vertical movements velocity of the Earth's crust in Poland. *Prace Instytutu Geodezji i Kartografii* 37 (1-2), 221–248 (in Polish with English summary).
- Zuchiewicz W. 1998. Quaternary tectonics of the Outer West Carpathians, Poland. *Tectonophysics* 297, 121–132.
- Zuchiewicz W. 2000. Maps 1:5000000: Contemporary tectonic movements, Tectonic movements in Quaternary I, II, Tectonic structural units (original: Mapy 1:5000000: Współczesne ruchy tektoniczne, Ruchy tektoniczne w czwartorzędzie I, II, Jednostki tektoniczno-strukturalne). In Maciejewski W., Uliaszak R. (eds) *Atlas Polski. Encyklopedia Geograficzna Świata*, T XI, Opres, Kraków.
- Zuchiewicz W. 2002. Neotectonics, morphotectonics, seismotectonics – state of research and perspectives for the future: introduction. *Folia Quaternaria* 73, 5–12.
- Żaba J. 1995. Strike-slip faults at the edge zone of Upper Silesia and Małopolska Block (southern Poland). *Przegląd Geologiczny* 43 (10), 838–842 (in Polish with English summary).