

Six-phase motor drive supplied by four voltage source inverters with synchronized space-vector PWM

VALENTIN OLESCHUK¹, GABRIELE GRANDI²

¹*Institute of Power Engineering of the Academy of Sciences
5 Academy, Kishinau, MD-2028, Moldova*

²*Department of Electrical Engineering
University of Bologna, Italy*

e-mail: oleschukv@hotmail.com, gabriele.grandi@unibo.it

(Received: 18.06.2011, revised: 26.08.2011)

Abstract: Novel method of space-vector-based pulsewidth modulation (PWM) has been disseminated for synchronous control of four inverters feeding six-phase drive based on asymmetrical induction motor which has two sets of windings spatially shifted by 30 electrical degrees. Basic schemes of synchronized PWM, applied for control of four separate voltage source inverters, allow both continuous phase voltages synchronization in the system and required power sharing between DC-sources. Simulations show a behavior of six-phase system with continuous and discontinuous versions of synchronized PWM.

Key words: dual three-phase system, modulation strategy, voltage synchronization

Nomenclature

F – fundamental frequency; F_m – maximum fundamental frequency; i – number of notches inside a half of the clock-interval; K_s – coefficient of synchronization; K_{ov1} – the first coefficient of over-modulation; K_{ov2} – the second coefficient of overmodulation; m_1, m_2, m_3, m_4 – modulation indices of four inverters; P_1, P_2, P_3, P_4 – power of four DC-sources; $V_{dc1}, V_{dc2}, V_{dc3}, V_{dc4}$ – DC-sources voltages; $V_{a1}, V_{b1}, V_{c1}, V_{a2}, V_{b2}, V_{c2}$ – pole voltages of the first and the second inverters; $V_{x1}, V_{y1}, V_{z1}, V_{x2}, V_{y2}, V_{z2}$ – pole voltages of the third and fourth inverters; V_{as}, V_{bs}, V_{cs} – phase voltages of the first inverter group; V_{xs}, V_{ys}, V_{zs} – phase voltages of the second inverter group; $V_{a1b1}, V_{a2b2}, V_{x1y1}, V_{x2y2}$ – line-to-line voltages of inverters; V_k – amplitude of the kth-harmonic of voltage; V_0 – zero-sequence voltage; $WTHD$ – weighted total harmonic distortion factor; β_1 – duration of the central active switching signal inside the clock-interval; β_j – duration of others active switching signals; γ_j – duration of the minor part of the active switching signals; λ_j – duration of notches; λ' – duration of notches, generated at the clock-points; β'' – duration of the β -signals, neighboring with the λ' notches; τ – width of sub-cycle (switching interval).

1. Introduction

Multiphase and, in particular, six-phase induction motor drives are a subject of increasing interest in the last years due to some advantages compared with conventional three-phase drives [1-5]. One of the most perspective applications of six-phase induction motor drives lies

in the field of high power/high current systems (ship propulsion, locomotive, electrical vehicles, etc.), characterized by low switching frequency of power switches.

Recently, novel four-inverter-based topology of dual three-phase drive system with an increased power rating has been proposed, allowing quadrupling the power capability of a single inverter with given voltage and current rating [6]. Figure 1 shows this system structure, consisting of two groups of two inverters, supplying the open-end windings of asymmetrical dual three-phase motor. The induction machine has in this case two sets of winding spatially shifted by 30 electrical degrees.

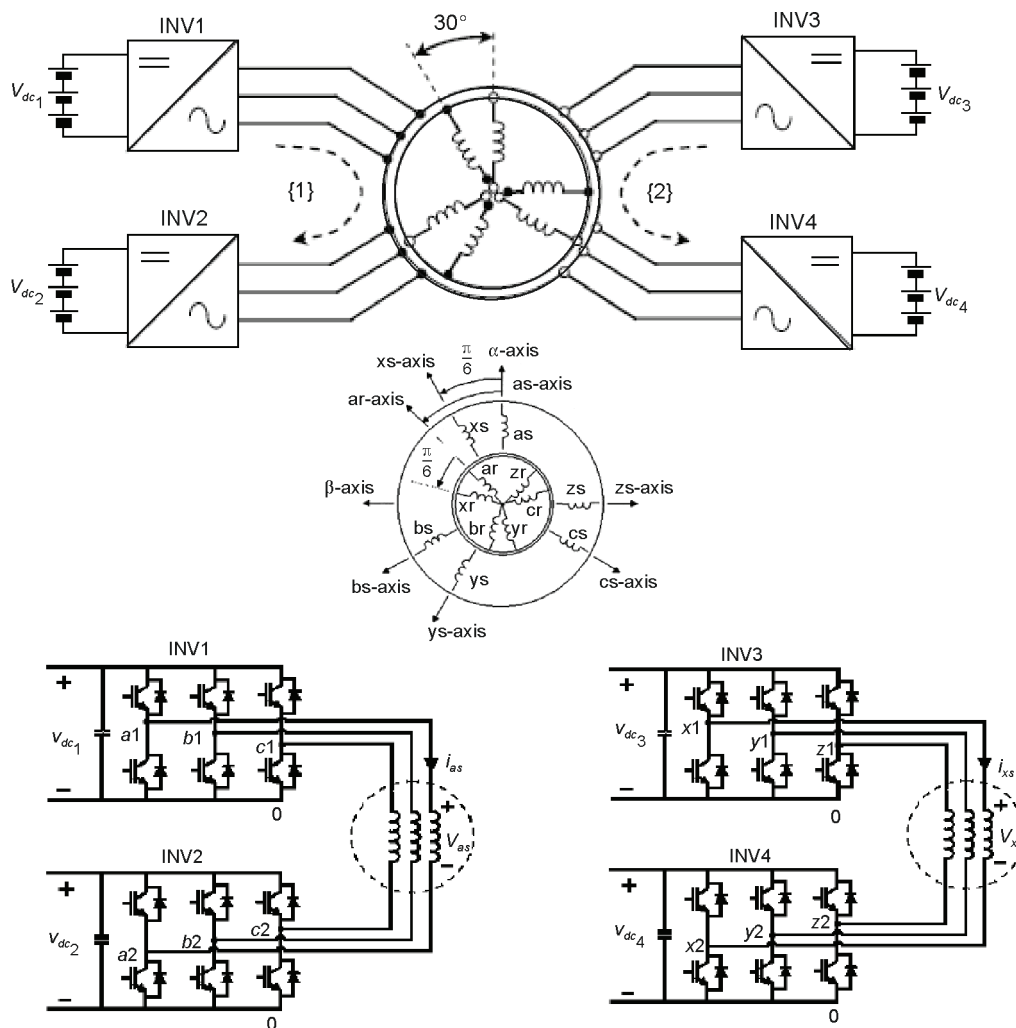


Fig. 1. Topology of dual three-phase system on the base of four inverters (the first inverter group **INV1 + INV2**, and the second inverter group **INV3 + INV4**) supplying open-end windings of asymmetrical six-phase induction motor with two sets of winding spatially shifted by 30 electrical degrees

For electrical drives with increased power and/or current it is necessary to synchronize the output voltage waveforms of converters for elimination of undesirable subharmonics of voltage and current [7-9]. In order to avoid asynchronism of standard versions of space-vector modulation, novel method of synchronized space-vector PWM has been proposed and developed with application to different topologies of power electronic converters, electric drives, and renewable energy systems [10-17].

So, this paper presents results of application of a novel method of synchronized pulsewidth modulation for control of asymmetrical dual three-phase (six-phase) drive based on four cascaded voltage source inverters, supplied by four isolated DC sources.

2. Peculiarities of the method of synchronized space-vector PWM

In order to avoid asynchronism of conventional space-vector modulation, novel method of synchronized PWM [10, 11] can be used for control of each inverter in the six-phase (dual three-phase) drive system.

Figures 2 and 3 present basic switching state sequences of standard three-phase voltage source inverter inside the interval 0° - 90° . They illustrate schematically continuous (Fig. 2) and discontinuous (Fig. 3) versions of synchronized space-vector PWM.

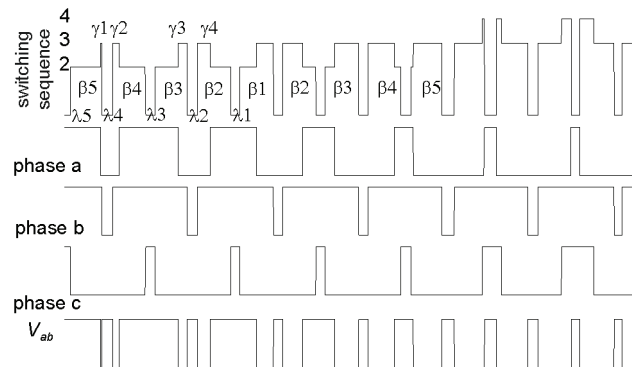


Fig. 2. Switching state sequence, pole voltages and line voltage V_{ab} of inverter with continuous synchronized PWM

The upper traces in Figures 2 and 3 are switching state sequences (in accordance with conventional designation [10]), then – control signals for the cathode switches of the phases **a**, **b**, **c** (x , y , z) of each inverter. The lower traces in Figures 2 and 3 show the corresponding quarter-wave of the line output voltage of inverters. Signals β_j represent total switch-on durations during switching sub-interval τ , signals γ_k are generated on the borders (Fig. 2) or in the centers (Fig. 3) of the corresponding β . Widths of notches λ_k represent duration of zero sequences (notches) [10, 11].

One of the basic ideas of the method of synchronized PWM is in continuous synchronization of the positions of all central signals β_1 in the centres of the 60° -clock-intervals, and

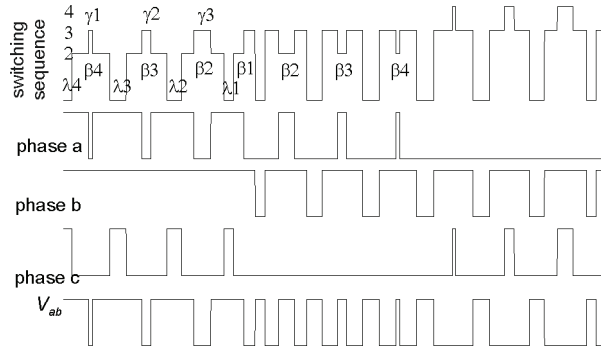


Fig. 3. Switching state sequence, pole voltages and line voltage V_{ab} of inverter with discontinuous synchronized PWM

then – in symmetrical generation of all other active β -signals around the centres of the 60° -clock-intervals. In particular, special signals λ' (λ_5 in Fig. 2, λ_4 in Fig. 3) with the neighboring β'' (β_5 in Fig. 2, β_4 in Fig. 3) are formed in the clock-points (0° , 60° , 120°) of the output curve of inverters with synchronized PWM for this purpose. They are reduced simultaneously until close to zero value at the boundary frequencies between control sub-zones. Thus, this novel PWM strategy provides continuous symmetrical output voltage control of inverters.

Table 1 presents generalized properties and basic control correlations for the proposed method of synchronized PWM [10]. It is also compared here with conventional asynchronous space-vector modulation.

Table 1. Basic parameters of PWM methods

Control (modulation) parameter	Conventional schemes of vector PWM	Proposed method of modulation	
Operating and max. parameter	Operating and max. voltage V and V_m	Operating and max. fundamental frequency F and F_m	
Modulation index m	V/V_m	F/F_m	
Duration of subcycles	T	τ	
Center of the k -signal	α_k (angles/degr.)	$\tau(k-1)$ (sec)	
Switch-on durations	$T_{ak} = 1.1mT$ $[\sin(60^\circ - \alpha_k) + \sin\alpha_k]$ $t_{ak} = 1.1mT\sin\alpha_k$ $t_{bk} = 1.1mT \times$ $\sin(60^\circ - \alpha_k)$	Algebraic PWM	Trigonometric PWM
		$\beta_k = \beta_1[1 - A \times$ $\times (k-1)\tau FK_{ov1}]$ $\gamma_k = \beta_{i-k+1}$ $[0.5 - 6(i-k)\tau F]K_{ov2}$ $\beta_k - \gamma_k$	$\beta_k = \beta_1 \times$ $\times \cos[(k-1)\tau K_{ov1}]$ $\gamma_k = \beta_{i-k+1}$ $[0.5 - 0.9\tau n(i-k)\tau]K_{ov2}$ $\beta_k - \gamma_k$
Switch-off states (zero voltage)	$t_{0k} = T - t_{ak} - t_{bk}$	$\lambda_k = \tau - \beta_k$	
Special parameters providing synchronization of the process of PWM		$\beta'' = \beta_1[1 - A \times$ $\times (k-1)\tau FK_{ov1}]K_s$ $\lambda' = (\tau - \beta'') \times K_{ov1}K_s$	$\beta'' = \beta_1 \times$ $\times \cos[(k-1)\tau K_{ov1}]K_s$ $\lambda' = (\tau - \beta'') \times K_{ov1}K_s$

3. Synchronized PWM in dual three-phase system on the base of four inverters

Control of four three-phase inverters supplying asymmetrical six-phase induction motor has some specific peculiarities.

In particular, these inverters are grouped into two groups with two cascaded inverters in each group, and each inverter group is connected with the corresponding open-end windings of dual three-phase induction motor. Synchronous symmetrical control of the output voltage of each inverter of each inverter group in accordance with algorithms of synchronized PWM provides synchronous symmetrical regulation of voltage in the corresponding induction machine phase windings. Rational phase shifting between output voltage waveforms of the two inverters in each inverter group is equal in this case to one half of the switching interval (sub-cycle) τ [18].

In the case, when the two DC-link voltage sources have the same voltage, the resulting voltage space-vectors are equal to the space-vector patterns of conventional three-level inverter [3, 6, 18]. The phase voltage V_{as} of the first group of cascaded inverters with two insulated DC-link sources (Fig. 1) is calculated in accordance with (1)-(4) [19, 20]:

$$V_{01} = 1/3(V_{a1} + V_{b1} + V_{c1} + V_{a2} + V_{b2} + V_{c2}), \quad (1)$$

$$V_{as} = V_{a1} + V_{a2} - V_{01}, \quad (2)$$

$$V_{02} = 1/3(V_{x1} + V_{y1} + V_{z1} + V_{x2} + V_{y2} + V_{z2}), \quad (3)$$

$$V_{xs} = V_{x1} + V_{x2} - V_{02}, \quad (4)$$

where $V_{a1}, V_{b1}, V_{c1}, V_{a2}, V_{b2}, V_{c2}$ and $V_{x1}, V_{y1}, V_{z1}, V_{x2}, V_{y2}, V_{z2}$ are the corresponding pole voltages of each group of three-phase inverters, V_{01} and V_{02} are the corresponding zero sequence (triplen harmonic components) voltages.

At the same time, control of asymmetrical six-phase induction machines is based on the 300-phase-shift of control and output signals of two mentioned above groups of four inverters [2, 5]. As an illustration of control of dual three-phase system with synchronized PWM and with equal voltages of the all DC-sources ($V_{dc1} = V_{dc2} = V_{dc3} = V_{dc4}$), Figures 4-7 present basic voltage waveforms (pole voltages $V_{a1}, V_{a2}, V_{x1}, V_{x2}$, line-to-line voltages V_{a1b1}, V_{x1y1} , and the phase voltages V_{as} and V_{xs} (with the spectrum of the V_{as} voltage)) of two groups of inverters, controlled by algorithms of continuous (Figs. 4-5) and discontinuous with the 30°-non-switching intervals (Figs. 6-7) synchronized modulation. The fundamental and switching frequencies of each inverter are equal correspondingly to $F = 35$ Hz and $F_s = 1$ kHz, modulation indices of all inverters are equal to $m_1 = m_2 = m_3 = m_4 = 0.7$ in this case. The phase output voltage of the system has nine levels (like output voltage of three-level neutral-point-clamped converter) in this control mode. In particular, the presented voltage waveforms have symmetry, and its spectra do not contain even harmonics and sub-harmonics.

In the case of non-equal DC-voltages, if $V_{dc1} \neq V_{dc2}$ and $V_{dc3} \neq V_{dc4}$, but $V_{dc1} = V_{dc3}$ and $V_{dc2} = V_{dc4}$, in order to provide equivalence of the output fundamental voltages (and also power balancing) of two inverters of each inverter group during scalar V/F control of the

system, it is necessary to provide linear correlations between its modulation indices and magnitudes of the DC voltages:

$$m_1 V_{dc1} = m_2 V_{dc2}, \quad (5)$$

$$m_3 V_{dc3} = m_4 V_{dc4}. \quad (6)$$

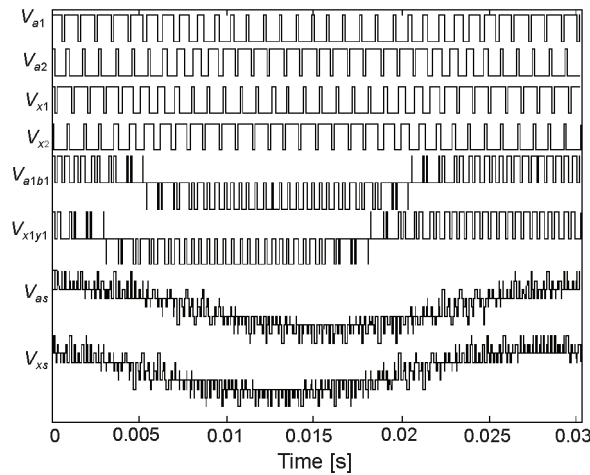


Fig. 4. Pole voltages V_{a1} , V_{a2} and V_{x1} , V_{x2} , line-to-line voltages V_{a1b1} and V_{x1y1} , and phase voltages V_{as} and V_{xs} of dual three-phase system with continuous synchronized PWM ($F = 35$ Hz, $V_{dc1} = V_{dc2} = V_{dc3} = V_{dc4}$, $m_1 = m_2 = m_3 = m_4 = 0.7$, $F_s = 1$ kHz)

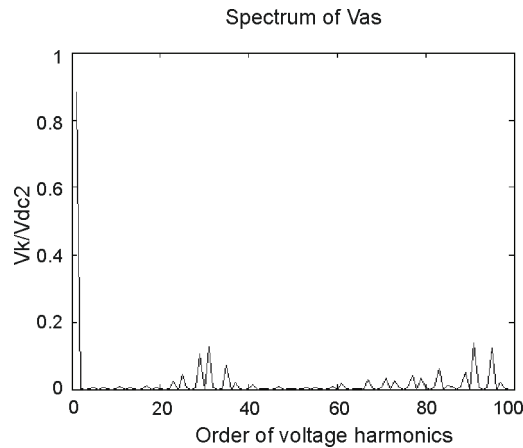


Fig. 5. Spectrum of the phase voltage V_{as} of the system with continuous synchronized PWM ($F = 35$ Hz, $F_{s1} = 1$ kHz)

In particular, for the case when $V_{dc1} = 0.7 V_{dc2}$, $V_{dc3} = 0.7 V_{dc4}$ and $m_2 = m_4 = 0.7$, in accordance with (5)-(6) $m_1 = m_3 = 0.93$, and the last value of modulation indices corresponds to overmodulation control mode of the two corresponding inverters. To illustrate the process

mentioned above in dual three-phase drive system on the base of four inverters supplied by four isolated DC sources with different voltages ($V_{dc1} = 0.7 V_{dc2}$, $V_{dc3} = 0.7 V_{dc4}$, $V_{dc2} = V_{dc4}$), Figures 8-11 present results of simulation of this system. In particular, Figures 8-9 show basic voltage waveforms and spectra of the V_{a1b1} , V_{a2b2} and V_{as} voltages for the system controlled by algorithms of continuous synchronized PWM. Figure 10 presents basic voltage waveforms during period of the fundamental frequency for the system with discontinuous synchronized PWM with the 300-non-switching intervals, and Figure 11 shows spectra of the line and phase voltages of the first group of cascaded inverters. The fundamental and switching frequencies of each inverter are equal to $F = 35$ Hz and $F_s = 1$ kHz. It is necessary to mention, that spectra of the corresponding output voltages of inverters of the second inverter group will have the same nature for the presented control mode.

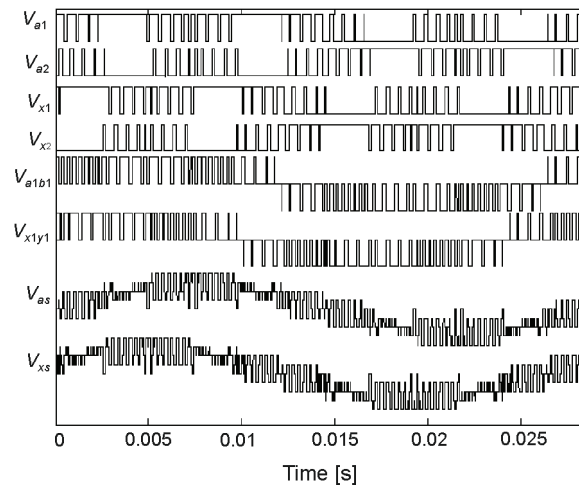


Fig. 6. Pole voltages V_{a1} , V_{a2} and V_{x1} , V_{x2} , line-to-line voltages V_{a1b1} and V_{x1y1} , and phase voltages V_{as} and V_{xs} of dual three-phase system with discontinuous synchronized PWM ($F = 35$ Hz, $V_{dc1} = V_{dc2} = V_{dc3} = V_{dc4}$, $m_1 = m_2 = m_3 = m_4 = 0.7$, $F_s = 1$ kHz)

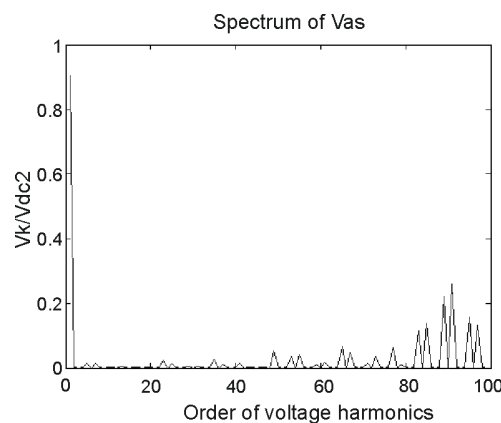


Fig. 7. Spectrum of the phase voltage V_{as} of the system with discontinuous synchronized PWM ($F = 35$ Hz, $F_{s1} = 1$ kHz)

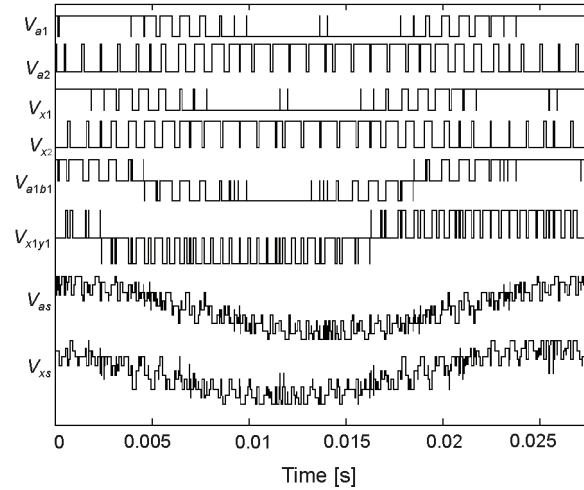


Fig. 8. Pole voltages V_{a1} , V_{a2} and V_{x1} , V_{x2} , line-to-line voltages V_{a1b1} and V_{x1y1} , and phase voltages V_{as} and V_{xs} of dual three-phase system with continuous synchronized PWM
 ($F = 35$ Hz, $V_{dc1} = 0.7 V_{dc2}$, $V_{dc3} = 0.7 V_{dc4}$, $V_{dc2} = V_{dc4}$, $m_1 = m_3 = 0.933$, $m_2 = m_4 = 0.7$, $F_s = 1$ kHz)

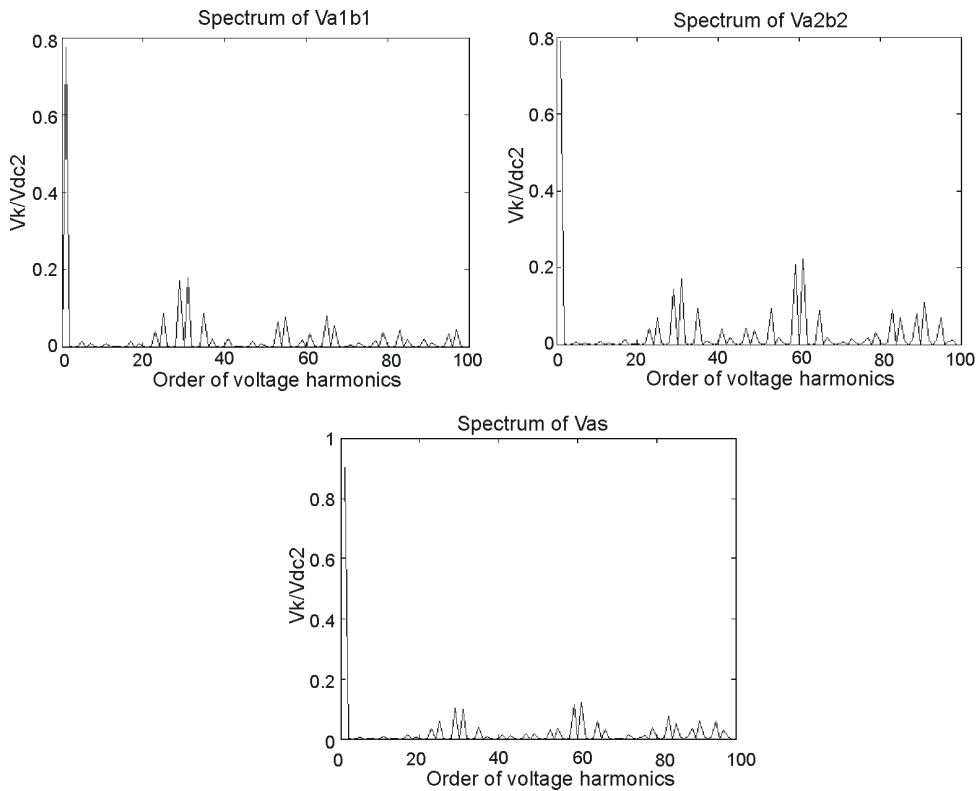


Fig. 9. Spectra of the V_{a1b1} , V_{a2b2} and V_{as} voltages of the system with continuous synchronized PWM
 ($F = 35$ Hz, $F_s = 1$ kHz)

For dual three-phase drive system on the base of four inverters with non-equal voltages of DC-links, in order to provide the rated power ratio P1/P2 and P3/P4 between four power sources of two groups of cascaded inverters (for scalar V/F control mode), it is necessary to provide

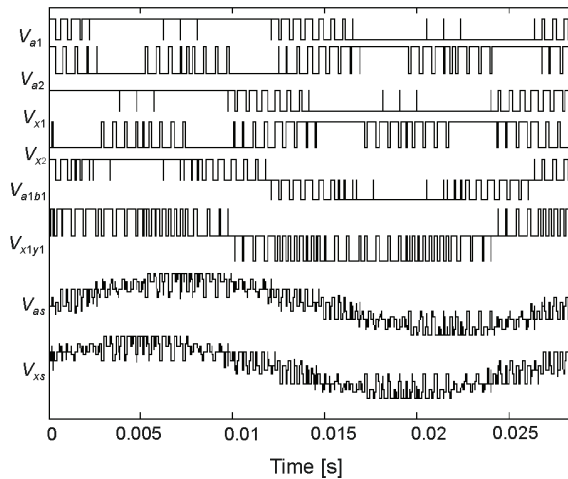


Fig. 10. Pole voltages V_{a1} , V_{a2} and V_{x1} , V_{x2} , line-to-line voltages V_{a1b1} and V_{x1y1} , and phase voltages V_{as} and V_{xs} of dual three-phase system with discontinuous synchronized PWM ($F = 35$ Hz, $V_{dc1} = 0.7 V_{dc2}$, $V_{dc3} = 0.7 V_{dc4}$, $V_{dc2} = V_{dc4}$, $m_1 = m_3 = 0.933$, $m_2 = m_4 = 0.7$, $F_s = 1$ kHz)

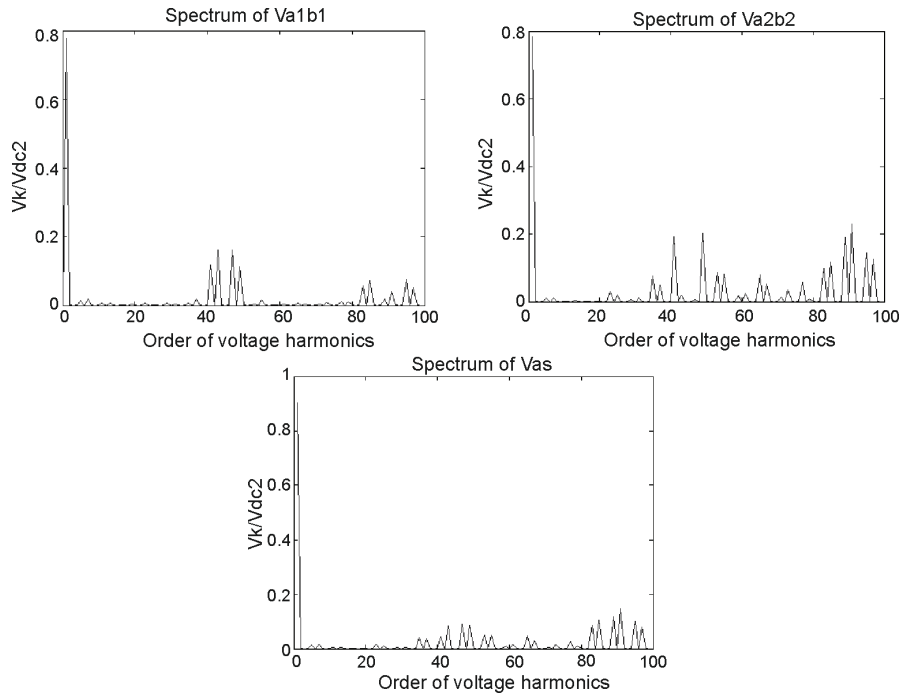


Fig. 11. Spectra of the V_{a1b1} , V_{a2b2} and V_{as} voltages of the system with discontinuous synchronized PWM ($F = 35$ Hz, $F_s = 1$ kHz)

the corresponding correlations between magnitudes of DC voltages, modulation indices of four inverters and the rated power ratio in accordance with (7)-(8) [14]:

$$\frac{m_1 V_{dc1}}{m_2 V_{dc2}} = \frac{P_1}{P_2}, \quad (7)$$

$$\frac{m_3 V_{dc3}}{m_4 V_{dc4}} = \frac{P_3}{P_4}. \quad (8)$$

For dual three-phase drive system it is practically important to provide equal power distribution between two groups of inverters feeding asymmetrical six-phase induction motor:

$$P_1 + P_2 = P_3 + P_4. \quad (9)$$

For this case, in accordance with (7)-(8), for balancing operation of dual three-phase system it is necessary to provide:

$$m_1 V_{dc1} P_2 + m_2 V_{dc2} P_1 = m_3 V_{dc3} P_4 + m_4 V_{dc4} P_3, \quad (10)$$

where corresponding power of each inverter can be described as relative value of the total power of the system.

As an example of balanced operation of the system with four different levels of DC-voltages, Figures. 12-13 present basic voltage waveforms and spectra of the V_{a1b1} , V_{a2b2} V_{as} and V_{xs} voltages for the dual three-phase system with discontinuous synchronized PWM with the 30° -non-switching intervals. The fundamental and switching frequencies of each inverter are equal to $F = 35$ Hz and $F_s = 1$ kHz. Relative magnitudes of DC-voltages are equal for this case, as parts of the maximum DC-voltage V_{dc4} :

$$V_{dc1} = 0.72V_{dc4}; V_{dc2} = 0.9V_{dc4}; V_{dc3} = 0.75V_{dc4}$$

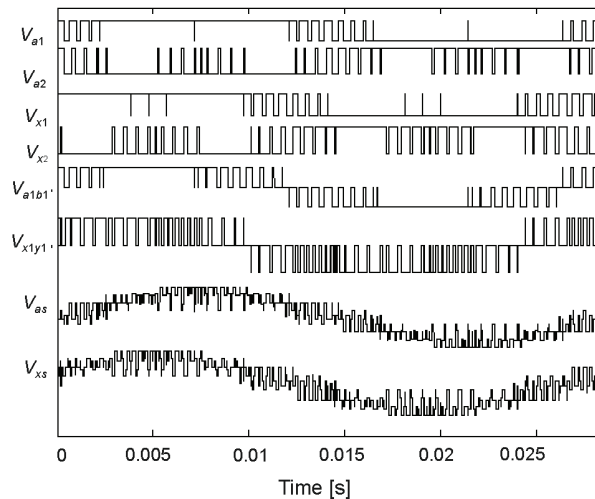


Fig. 12. Pole voltages V_{a1} , V_{a2} and V_{x1} , V_{x2} , line-to-line voltages V_{a1b1} and V_{x1y1} , and phase voltages V_{as} and V_{xs} of dual three-phase system with discontinuous synchronized PWM ($F = 35$ Hz, $V_{dc1} = 0.8V_{dc2}$, $V_{dc2} = 0.9V_{dc4}$, $V_{dc3} = 0.75V_{dc4}$, $m_1 = 0.97$, $m_2 = 0.777$, $m_3 = 0.933$, $m_4 = 0.7$, $F_s = 1$ kHz)

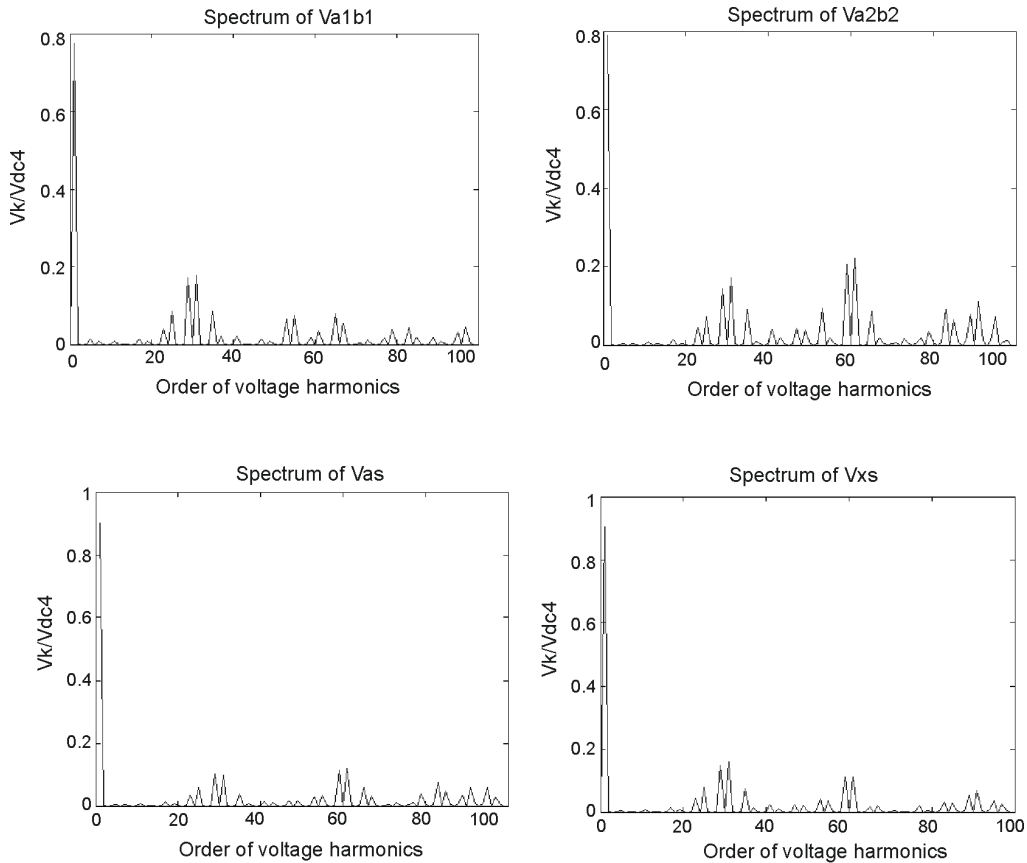


Fig. 13. Spectra of the V_{a1b1} , V_{a2b2} , V_{as} and V_{xs} voltages of the system with discontinuous synchronized PWM ($F = 35$ Hz, $F_s = 1$ kHz)

Modulation index of the fourth inverter, supplied by the maximum DC-voltage V_{dc4} , is equal to $m_4 = 0.7$. Taking into consideration equal power distribution between the corresponding sources ($P_1 = P_2 = P_3 = P_4$), in accordance with (10) modulation indices of the corresponding inverters are equal to:

$$m_1 = 0.97, m_2 = 0.777; m_3 = 0.933.$$

Thus, in this case the control modes of two inverters, of the first and the third, correspond to overmodulation control. The proposed algorithm provides equal magnitudes of the phase fundamental voltages V_{as} and V_{xs} of dual three-phase system (see Fig. 13), and, correspondingly, equal power distribution between two sets of three-phase windings of six-phase machine.

The motor phase voltages V_{as} and V_{xs} of six-phase drives on the base of four inverters with both continuous and discontinuous synchronized PWM have symmetry during the whole control range and for any operating conditions (see Figs. 4-13), and its spectra do not contain

even harmonics and sub-harmonics, which is especially important for high power/current systems.

In order to compare the characteristics of asymmetrical dual three-phase (six-phase) systems on the base of two inverters ([2], standard topology of the system), and on the base of four inverters (novel topology of six-phase system [6], analyzed in the paper), Figure 14 presents calculation results of Weighted Total Harmonic Distortion factor (WTHD) versus modulation index m for the motor phase voltage V_{as} – averaged values of

$$WTHD = (1/V_{as1}) \left(\sum_{k=2}^{1000} (V_{as_k} / k)^2 \right)^{0.5},$$

for the six-phase drive with continuous (CPWM) and discontinuous (DPWM) schemes of synchronized modulation. In particular, DC-voltage magnitudes are equal in this case for all DC-sources, so, modulation indices of all inverters are equal too. Control mode of the drive system corresponds here to standard scalar V/F control, and the average switching frequency of each inverter is equal to $F_s = 1$ kHz.

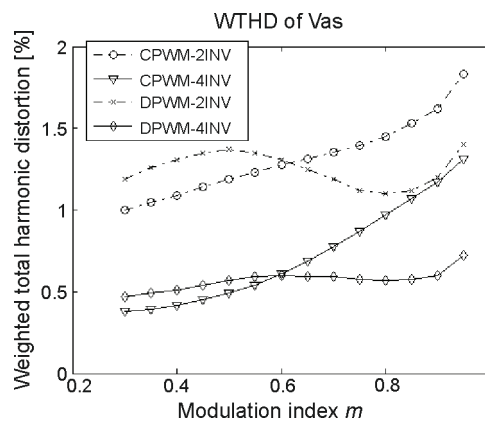


Fig. 14. Averaged WTHD factor of the phase voltage V_{as} versus modulation index m for six-phase system on the base of two inverters (CPWM-2INV, DPWM-2INV), and for the system on the base of four inverters (CPWM-4INV, DPWM-4INV)

The presented results show, that integral spectral characteristics of the phase voltage of six-phase system on the base of four inverters are much better, than of the system on the base of two inverters.

Figure 15 presents results of analysis of spectral composition of the phase voltage V_{as} of dual three-phase system on the base of four inverters with both continuous (CPWM) and discontinuous (DPWM) versions of synchronized PWM for the case of non-equal magnitudes of DC-voltages. In particular, for this case $V_{dc1} \neq V_{dc2}$ and $V_{dc3} \neq V_{dc4}$, but $V_{dc1} = V_{dc3}$ and $V_{dc2} = V_{dc4}$. Two basic control modes have been analyzed:

- 1) $V_{dc1} = 0.9V_{dc2}$, $V_{dc3} = 0.9V_{dc4}$, $K_{dc} = 0.9$ for this case;
- 2) $V_{dc1} = 0.7V_{dc2}$, $V_{dc3} = 0.7V_{dc4}$, $K_{dc} = 0.7$ for this case.

The presented results show, that a value of the WTHD factor of the phase voltage of six-phase system on the base of four inverters controlled by algorithms of discontinuous synchronized PWM is not strongly sensitive to relative magnitudes of DC-voltages.

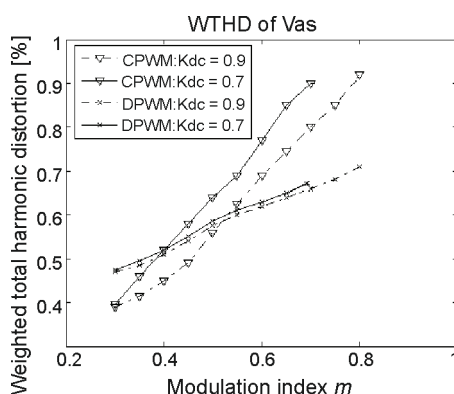


Fig. 15. Averaged WTHD factor of the phase voltage V_{as} versus modulation index $m = m_2 = m_4$ for the six-phase system on the base of four inverters with non-equal DC-voltages.

4. Conclusion

Space-vector-based algorithms of synchronized PWM, applied for control of four voltage source inverters feeding asymmetrical dual-three phase (six-phase) induction motor with open-end windings, allow continuous synchronization of the phase voltages in the system for any operating conditions. In particular, it provides voltage synchronization for any ratios (integral or fractional) between the switching and fundamental frequencies, and for any ratios of voltage magnitudes of four DC-sources.

The phase voltages of six-phase drives on the basis of four inverters with synchronized PWM have symmetry during the whole control range, including the zone of overmodulation, and its spectra do not contain even harmonics and sub-harmonics, which is especially important for high power/high current applications.

Simple linear correlations between modulation indices of four three-phase inverters, magnitudes of DC voltages, and required power sharing between inverters provide requiring power balancing between DC sources and equivalence of the phase fundamental voltages of two groups of inverters.

References

- [1] Levi E., Bojoi R., Profumo F. et al., *Multiphase induction motor drives – a technology status review*. IET Electrical Power Applications 1(4): 489-516 (2007).
- [2] Bojoi R., Farina F., Profumo F., Tenconi A., *Dual-three phase induction machine drive control – a survey*. IEEJ Transactions on Industry Applications 126(4): 420-429 (2006).

- [3] Grandi G., Serra G., Tani A., *General analysis of multiphase systems based on space vector approach*. Proc. of the IEEE-EPE Power Electronics and Motion Control Conference (EPE-PEMC'2006), pp. 834-840 (2006).
- [4] Levi E., *Multiphase electric machines for variable speed applications*. IEEE Transactions on Industrial Electronics 55(5): 1893-1909 (2008).
- [5] Oleschuk V., Griva G., *Synchronized space-vector modulation for six-phase automotive drive with controlled switching frequency*. International Review of Electrical Engineering (IREE) 4(1): 50-56 (2009).
- [6] Grandi G., Tani A., Sanjeevkumar P., Ostojic D., *Multi-phase multi-level AC motor drive based on four three-phase two-level inverters*. Proc. of the IEEE International Symposium on Power Electronics, Electrical Drives, Automation and Motion (SPEEDAM'2010), pp. 1768-1775 (2010).
- [7] Holtz J., *Pulsewidth modulation for electric power conversion*. Proceedings of IEEE 82(8): 1194-1213 (1994).
- [8] Mohan N., Undeland T.M., Robbins W.P., *Power electronics*. 3rd ed., John Wiley & Sons (2003).
- [9] Jordan R.K., Stumpf P., Bartal P. et al., *A novel approach in studying the effects of subharmonics on ultrahigh speed AC motor drives*. IEEE Transactions on Industrial Electronics 58: 8 (2011).
- [10] Oleschuk V., Blaabjerg F., *Direct synchronized PWM techniques with linear control functions for adjustable speed drives*. Proc. of the IEEE Applied Power Electronics Conference (APEC'2002), pp. 76-82 (2002).
- [11] Oleschuk V., Blaabjerg F., Bose B.K., *Analysis and comparison of algebraic and trigonometric methods of synchronous PWM for inverter drives*. Proc. of the IEEE Power Electronics Specialists Conference (PESC'02), pp. 1439-1444 (2002).
- [12] Oleschuk V., Bojoi R., Profumo F. et al. *Multifunctional six-phase motor drives with algorithms of synchronized PWM*. Proc. of the IEEE Industrial Electronics Conference (IECON'2006), pp. 1293-1300 (2006).
- [13] Oleschuk V., Profumo F., Tenconi A., *Five-phase inverters with synchronized pulsewidth modulation*. International Review of Electrical Engineering (IREE) 2(2): 123-129 (2007).
- [14] Oleschuk V., Bojoi R., Griva G., Profumo F., *Dual inverter-fed traction drive with DC sources power balancing based on synchronized PWM*. Proc. of the IEEE International Electrical Machines and Drives Conference (IEMDC'2007), pp. 260-265 (2007).
- [15] Oleschuk V., Profumo F., Tenconi A. *Analysis of operation of symmetrical dual three-phase converters with hybrid schemes of synchronised PWM*. International Review of Electrical Engineering (IREE) 2(6): 793-802 (2007).
- [16] Oleschuk V., Griva G., *Simulation of processes in synchronized cascaded inverters for photovoltaic application*. International Review of Electrical Engineering (IREE) 4(5) (A): 928-936 (2009).
- [17] Oleschuk V., Griva G. Spertino F., *Dual neutral-point-clamped converters with synchronized PWM for photovoltaic installations*. International Review of Electrical Engineering (IREE) 5(1)(A): 55-63 (2010).
- [18] Stemmler H., P. Guggenbach, *Configurations of high power voltage source inverter drives*. Proc. of the European Power Electronics Conference (EPE'93), pp. 7-12 (1993).
- [19] Shivakumar E.G., Gopakumar K., Sinha S.K. et al., *Space vector PWM control of dual inverter fed open-end winding induction motor drive*. Proc. of the IEEE Applied Power Electronics Conference (APEC'2001), pp. 399-405 (2001).
- [20] Malinowski M., Gopakumar K., Rodriguez J., Pérez M.A., *A survey on cascaded multilevel inverters*. IEEE Transactions on Industrial Electronics 57(7): 2197-2206 (2010).