

# Casting Machines and Properties of Al-Si Castings Alloys

Data wpłyńięcia do Redakcji: 06/2022

Data akceptacji przez Redakcję do publikacji: 09/2022

2022, volume 11, issue 2, pp. 8-34

**Juraj Ružbarský**

**Tibor Krenický**

**Jozef Maščeník**

**Tomáš Coranič**

University of Košice, Slovakia



**Abstract:** The paper focuses on the research of holding pressure inside the mould cavity and pressing speed as technological parameters of die casting. The experiments conducted within the frame of the practical part examined the plunger and the pressure or the holding pressure in the mould cavity influencing the mechanical properties of a casting which were represented by ultimate tensile strength and percentage share of porosity of Al-Si castings. The results of experiments and analysis of the measured values proved the relation between pressure, or holding pressure, in the mould cavity and the ultimate tensile strength and porosity of castings. Plunger pressing speed is closely related to mould cavity filling mode which affected the final porosity of casting. It can be assumed that die casting is positively influenced by the increase of ultimate tensile strength and reduction of porosity during the increase of pressure or of holding pressure in the mould cavity. Higher values of holding pressure caused the elimination of pores which resulted in a decrease in the percentage share of pores in the casting and an increase in values of ultimate tensile strength.

**Keywords:** die casting, technological parameters, machines, die casting pressure, pressing speed

## INTRODUCTION

One of the alternatives in the production of castings is a high-pressure die-casting technology. Die casting technology ranks among the prime foundry technologies. It is a specific method used especially in the case of the production of smaller, lighter, thin-walled products with more complicated shapes and with a strictly dimensioned number of pieces in the individual series. Particular attention is paid to surface quality which is usually smooth. These castings are mostly produced from non-ferrous metal alloys with average die casting temperature [1, 2].

Die casting technology of metals represents the method of precise casting production approaching the ideal effort to change basic material into a final version. It is the means of casting production in the case which the molten metal is injected into a permanent mould at a high speed of 10-100 m·s<sup>-1</sup> that the metal reaches the ingate under the influence of high pressure (the melt is being cast with the pressure of up to 500 MPa). Throughout solidification, the metal remains under the pressure, i.e., the process is referred to as multiplication. High filling speed and high pressure both allow casting of thin-walled and rather fragmented castings

which in many cases do not require further machining other than removal of sprues and fins [4, 20].

Die casting technology allows producing of castings with high complexity and surface quality approaching the final shapes and dimensions. Right the properties and quality of castings are influenced by several different factors which affect the entire process of die casting. The factors include a correct mould design, a gating system, the venting and cooling systems, a type of casting alloy, the quality of produced mould, a die casting machine with attendance, adequate setting of all technological and metallurgical parameters of the technology [2, 8, 11]. A complex of all of the aforementioned factors and parameters determines a precondition for the production of high-quality castings. Technological parameters significantly influencing mechanical properties involve casting pressure (holding pressure), mould cavity filling time and thermal conditions of the die casting process [29, 31]. Within the frame of the research, it is desired to propose optimal values of the selected technological parameters of a die casting to achieve the required quality of the particular casting based on Al-Si alloys. Therefore the research was focused on the detection of the relation between the selected technological parameters of die casting (pressing speed, die casting pressure) about mechanical properties which are represented by ultimate tensile strength and by the porosity of castings.

### **PRESSING SPEED**

The melt pressing speed in the die casting process is connected with mould filling time. It determines the metal speed in the gating system and in the ingate of the mould which can be expressed using the continuity equation as follows [5, 26]:

$$v \cdot S_p = v_1 \cdot S_f \quad (1)$$

with:

$v$  – pressing speed in the filling chamber [ $\text{m} \cdot \text{s}^{-1}$ ],

$v_1$  – metal flow speed in the ingate [ $\text{m} \cdot \text{s}^{-1}$ ],

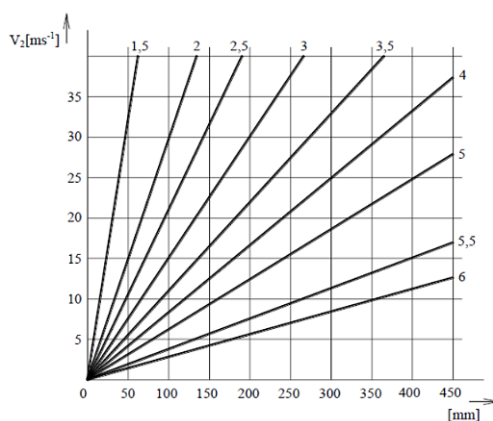
$S_p$  – cross section area of the pressing plunger [ $\text{m}^2$ ],

$S_f$  – cross section area of the ingate [ $\text{m}^2$ ].

The theoretically calculated flow speed of alloy in the ingate differs from the actual one. Measuring the flow speed in the ingate has proved that the actual speed is only 30 to 50% of the calculated theoretical speed. [29] In the mould cavity the values of metal flow speed range from 5 to 15% of the theoretically calculated flow speed of alloy [5, 20]. The actual molten metal flow speed is affected mainly by the following [3]:

- viscosity of alloy depending also on its temperature,
- losses caused by friction in the gating system and a mould cavity,
- losses caused by the change of the melt flow direction in the gating system and the mould cavity,
- pressure of air and vapours in the mould cavity moving against the molten metal flow.

Speed of the melt flow also affects the mechanical properties of the casting and the inner and surface quality of castings. Selection of the right speed of the mould cavity filling depends on the alloy type, the casting complexity, the wall thickness and the ratio of the gate area and the area of casting. The dependence of optimal speed in the ingate on the wall thickness and on the length of casting is shown in Figure 1 [3, 28].



**Fig. 1 Dependence of alloy speed  $v_2$  in the ingate on the wall thickness of casting and on the maximal distance of the mould cavity from the ingate**

Source: [3]

The character of the melt flow in the mould cavity depends on input melt speed into the mould cavity, mutual relation of the ingate thickness and the casting or their areas, viscosity and surface tension of the melt and thermal conditions which are formed due to reciprocal influence between the melt and the mould.

In general, three input speed types can be distinguished with three methods of mould cavity filling.

1. low speed – laminar filling (up to  $0.3 \text{ m}\cdot\text{s}^{-1}$ )
2. medium speed – continuous turbulent filling ( $0.5\text{-}15 \text{ m}\cdot\text{s}^{-1}$ )
3. high speed – disperse filling ( $25\text{-}30 \text{ m}\cdot\text{s}^{-1}$ )

Based on the aforementioned point of view of the final quality of casting, the speed of mould cavity filling determined the filling mode and the casting temperature influences the thermal model of the mould and the casting [15, 23].

### Die Casting Pressure

Pressure acting upon liquid metal in the filling chamber assures mould filling at adequate speed and over the optimal period. Hydrostatic pressure must be sufficiently high to overcome the resistance of solidifying metal mass in the thin cross-sections of the mould cavity and of gases that remain in the casting. The pressure is transmitted from the plungers through the sprue towards the mould cavity through the molten metal. Transmission of hydrostatic pressure to the mould cavity is referred to as holding pressure. To reach the highest casting quality, the lag between mould cavity filling and achieving the maximum pressure must be as short as possible, i.e., tenths of milliseconds before complete

solidification of casting. The casting shaping precision and surface roughness depend on the kinetic energy of the flow. Development of hydrodynamic pressure  $p_H$  with  $S_f/S_F < 0.25$  can be determined according to the following relation: [32]

$$p_H = \frac{S_f}{S_F} \rho v_1^2 \quad (2)$$

with:

$p_H$  – hydrodynamic pressure [Pa],

$S_f$  – cross section area of the ingate [m<sup>2</sup>],

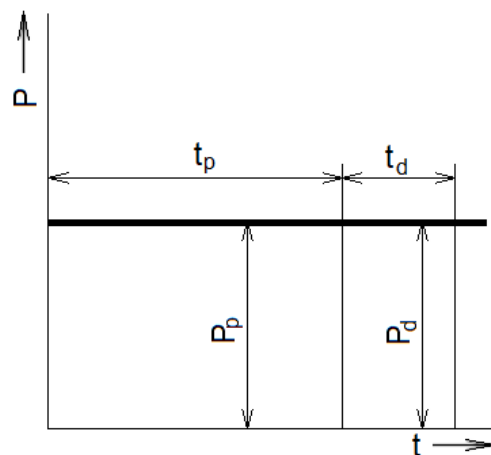
$S_F$  – cross section areas of the mould cavity [m<sup>2</sup>],

$v_1$  – metal flow speed in the ingate [m·s<sup>-1</sup>],

$\rho$  – specific weight of alloy [kg·m<sup>-3</sup>].

The influence of pressure acting upon metal in the filling chamber is reflected in mould cavity filling time. An increase of pressure acting upon the metal becomes distinctively evident in the degree of homogeneity and mechanical properties of casting if the pressure affects the casting at the beginning of and during solidification [5, 32]. The development of the influence of pressure acting upon the metal in the filling chamber differs in dependence on the filling mode [5].

- a) Figure 2 shows the development of pressure acting upon the metal in dependence on time in die casting of thin-walled castings complicated as to shape with the hot-chamber machine. The pressure value in the filling chamber ranges from 2 up to 7 MPa at speed in the ingate which reaches the value from 20 to 60 m·s<sup>-1</sup> with the ingate thickness from 0.3 up to 0.5 mm in case of small castings. In the case of medium-size castings, the gate thickness is 1 mm and the ingate thickness of large size castings reaches 1.8 mm.



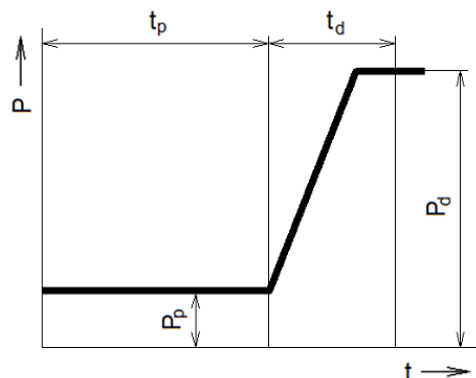
**Fig. 2 Development of pressure acting upon metal in case of thin-walled castings complicated as to shape produced by hot-chamber machine**

$P_p$  – pressure in mould cavity filling,  $P_d$  – pressure in case of holding pressure,  
 $t_p$  – mould cavity filling time,  $t_d$  – holding pressure operating time

Source: [5]

- a) Figure 3 shows the development of pressure acting upon metal in dependence on time in die casting of thick-walled castings with the hot-chamber machines. In the case of die casting with the hot-chamber machines for the thick-walled

castings, the pressure acting upon the alloy in the filling chamber reaches the lower value of 1 MPa. Holding pressure reaches the values of 7 MPa and more.

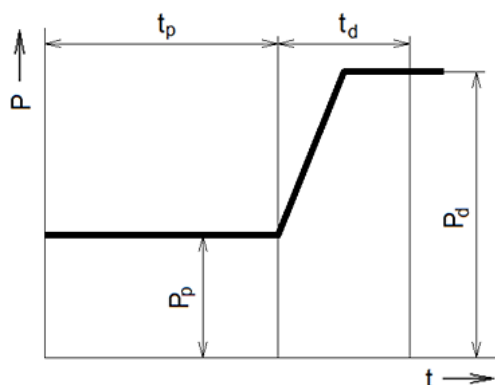


**Fig. 3 Development of pressure acting upon metal in case of thick-walled castings produced by hot-chamber machine**

$P_p$  – pressure in mould cavity filling,  $P_d$  – pressure in case of holding pressure,  
 $t_p$  – mould cavity filling time,  $t_d$  – holding pressure operating time

Source: [5]

- b) Figure 4 shows the development of pressure in the case of die casting with cold-chamber machines. With the horizontal cold chamber machines, the pressure acting upon alloy reaches values of approximately 50 MPa. Holding pressure reaches even 600 MPa and the alloy flow speed in the ingate is lower in the case of larger cross-sections of the gate.

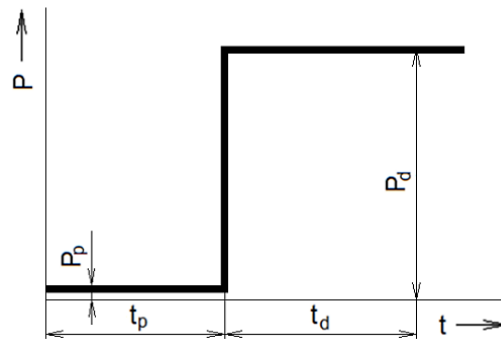


**Fig. 4 Development of pressure in case of die casting with the horizontal cold chamber machines**

$P_p$  – pressure in mould cavity filling,  $P_d$  – pressure in case of holding pressure,  
 $t_p$  – mould cavity filling time,  $t_d$  – holding pressure operating time

Source: [5]

In die casting with crystallization and semi-solidified metal processing, high pressure ranging from 100 up to 1000 MPa and lower speed in the ingate of approximately  $0.5 \text{ m}\cdot\text{s}^{-1}$  can be observed (Fig. 5).



**Fig. 5 Development of pressure in die casting with crystallization or in semi-solidified metal processing**

$P_p$  – pressure in mould cavity filling,  $P_d$  – pressure in case of holding pressure,  $t_p$  – mould cavity filling time,  $t_a$  – holding pressure operating time

Source: [5]

### Mould Cavity Filling Time

Mould cavity filling time ranks among the main technological parameters which is a high degree of influence quality of castings. It affects especially the surface quality and the inner structure of the casting. Short filling time prevents the gases and the vapours from escaping the mould cavity to a necessary extent. They entrap in the casting walls and although the surface quality remains satisfactory, the inner structure is disturbed. The long filling time of the mould cavity allows the gases to escape through a venting system when the melt front proceeds in the cavity. In this case, the inner structure is satisfactory, however, due to alloy temperature reduction in the flow front, a perfect blending of the melt in all locations as absent and dry joints and cold laps emerge. These defects represent a risk in the case of such castings, which are under dynamic and cyclic stress. Therefore, the optimal filling time is a compromise between the long and short time of the mould cavity filling and must be shorter than the time of the casting solidification in the mould. Theoretically, the mould cavity filling time can be calculated as follows [7, 9]:

$$\tau = \frac{V_F}{S_f \cdot v_1} \quad (3)$$

with:

$\tau$  – mould cavity filling time [s],

$V_F$  – mould cavity volume [m<sup>3</sup>],

$S_f$  – cross section area of the ingate [m<sup>2</sup>],

$v_1$  – metal flow speed in the ingate [m·s<sup>-1</sup>].

Start-up time, which should be shorter than the mould cavity filling time, can be theoretically expressed by the following relation:

$$t_1 = \frac{l_0 \frac{S_f}{S_p} - l_1 \sqrt{\frac{S_f}{S_p}} - l_2}{v} \cdot 2.944 \quad (4)$$

with:

$t_1$  – start-up time [s],

$v_p$  – pressing speed in the filling chamber [m·s<sup>-1</sup>],

$l_0$  – total trajectory length of the pressing plunger [m],

$l_1$  – melt trajectory length in the gating system before the ingate [m],

$l_2$  – melt trajectory length in the ingate [m],

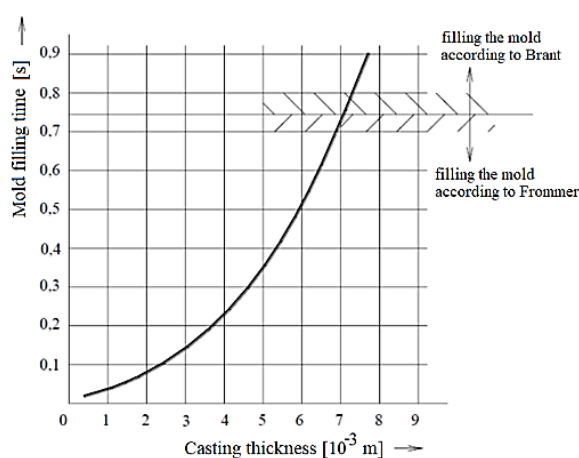
$S_p$  – cross section area of a plunger [m<sup>2</sup>].

In the case of constant thermal and physical characteristics, it has been proved in the experiments that filling time depends on the casting wall thickness and is independent of its dimensions as it is shown in Figure 6 [4, 6, 26]. Optimal mould cavity filling time about the casting wall thickness can be expressed by the following empirical relation [3]:

$$\tau = 1,6 \cdot 10^{-2} \cdot s^{1,984} \quad (5)$$

with:

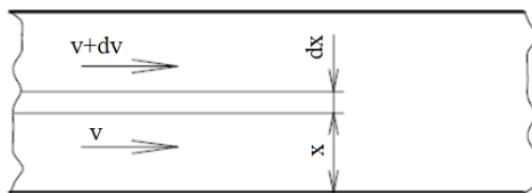
$s$  – casting wall thickness



**Fig. 6 Dependence of optimal mould cavity filling time on the casting wall thickness**

Source: [26]

Fluids following Newton's Law are referred to as Newtonian fluids (Figure 7) and the other fluids not following Newton's Law are referred to as the non-Newtonian ones.



**Fig. 7 Scheme of the flowing fluid layers according to Newton's Law**

Source: [26]

Non-Newtonian fluids include Bingham fluids following the Bingham Law (Figure 8) [9].

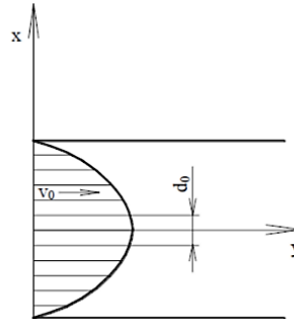
The following relation is applicable for the fluids following Newton's Law [15]:

$$\tau = \eta \frac{dv}{dx} \quad (6)$$

with:

$\tau$  – tangential stress of the flowing fluid layer in dependence on distance  $x$  from the edge [Pa],

$\eta$  – coefficient of dynamic viscosity of the flowing fluid [Pa·s],  
 $v$  – speed of the flowing fluid layer in distance  $x$  from the edge [ $\text{m}\cdot\text{s}^{-1}$ ],  
 $x$  – distance from the edge in the direction perpendicular to the fluid flow direction [m].



**Fig. 8 Fluid flow according to the Bingham Law**

Source: [5]

Bingham fluids are alloys in the interval of crystallization and of suspension, for instance, fluid grease for the mould treatment in the case in which solid particles float in a fluid diluent of a concentrate. Not until the release of crystallization germs right above the fluid and the crystals of the solid phase between the liquid and the solid, do the alloys follow Newton's Law. In the case of a mixture of solid particles floating in the fluid phase, the alloys follow the Bingham Law [3, 22].

In the interval of alloy crystallization, it is the case of two properties – viscosity and initial stress. The following relation is applicable for the initial stress of alloy in the interval of crystallization [10]:

$$\tau_0 = c_1 \Delta T^a \cdot k^{b \Delta T^d} \quad (8)$$

with:

$\tau_0$  – initial stress of alloy in the interval of crystallization [Pa],

$\Delta T$  – reduction of temperature contrary to the temperature at the beginning of the formation of crystallization germs [ $^{\circ}\text{C}$ ],

$c_1$  – constant [ $\text{Pa}^{\circ}\text{C}^{-a}$ ],

$d$  – constant [ $\text{Pa}^{\circ}\text{C}^{-d}$ ],

$k$  – constant,

$a, d$  – exponent.

The following relation is applicable for viscosity in the interval of crystallization [15]:

$$\eta_p = \eta \left[ 1 + c_1 \left( \frac{V}{V_0} \right) + c_2 \left( \frac{V}{V_0} \right)^2 \right] \quad (9)$$

with:

$\eta_p$  – plastic viscosity [ $\text{Nm}^{-2}\cdot\text{s}$ ],

$\eta$  – dynamic viscosity of fluid alloy [ $\text{Nm}^{-2}\cdot\text{s}$ ],

$c_1, c_2$  – constants,

$V$  – volume of solid particles [ $\text{m}^3$ ],

$V_0$  – total volume [ $\text{m}^3$ ].



Within the frame of the research, it is desired to detect the relationship between the pressing speed of die casting about the selected properties of aluminium alloy which are represented by ultimate tensile strength and by the porosity of castings [1, 3, 11, 24].

### Thermal Conditions in Die Casting of Metals

Contrary to other methods of casting, the temperature in die casting is of higher significance due to die-casting mould stress. Mould stress is caused by thermal shocks and the higher the temperature difference between liquid metal and die casting mould is, the higher the stress is. Therefore, the mould must be preheated to optimal temperature before die casting. The higher the die casting temperature is, the higher the mould temperature must be. The temperature of alloys intended for die casting must be higher by 10-20°C than the temperature at the beginning of crystallization. To maintain the required quality of castings, it is inevitable to maintain the optimal temperature of all thermal factors as follows:

- casting alloy temperature,
- die casting chamber temperature,
- mould temperature.

During die casting of melt with extremely high temperature into a cold mould with insufficient surface insulation higher attention must be paid to greasing agents, which causes extreme stress to superficial layers of the mould. In case of the insufficient temperature of the mould cavity surface, the premature decrease of the melt temperature occurs, which results in the formation of weld lines and cold shuts on the surface of castings. Inside the castings, extreme internal stress occurs due to super-cooling which leads to lower quality castings with subtle cracks [6, 22].

Temperature balance in the die casting process can be expressed by the following relation [15]:

$$Q_1 + Q_2 - Q_3 - Q_4 = Q_1 \quad (10)$$

with:

$Q_1$  – the amount of heat needed for the mould preheating [J],

$Q_2$  – the amount of heat delivered by the casting [J],

$Q_3$  – the amount of heat released by the casting to the mould [J],

$Q_4$  – the amount of heat reduced by the casting heat released from the mould [J].

Amount of heat delivered by the casting  $Q_2$  can be calculated as follows:

$$Q_2 = m_k [c_L(t_l - t_s) + l + c_s(t_s - 20)] \quad (11)$$

with:

$m_k$  – casting weight + 0.6 sprue weight [kg],

$c_L$  – specific heat of molten alloy [J.kg<sup>-1</sup>.K<sup>-1</sup>],

$c_s$  – specific heat of solid metal [J.kg<sup>-1</sup>.K<sup>-1</sup>],

$t_l$  – metal temperature in casting [°C],

$t_s$  – solid temperature [°C],

$l$  – latent heat of metal [J.kg<sup>-1</sup>].

The amount of heat released by the casting to the mould  $Q_3$  can be calculated as follows:

$$Q_3 = \alpha F_{odl}(t_l - t_f)\tau_l \quad (12)$$

with:

$\alpha$  – heat transfer coefficient [ $\text{W}\cdot\text{m}^{-2}\cdot\text{K}^{-1}$ ],

$F_{odl}$  – surface of the casting [ $\text{m}^2$ ],

$t_f$  – mould temperature [ $^{\circ}\text{C}$ ],

$\tau_l$  – time of mould cooling [s].

Amount of heat released with the casting from the mould  $Q_4$  can be calculated as follows:

$$Q_4 = m_k c_s (t_2 - 20) \quad (13)$$

with:

$t_2$  – temperature of the casting removed from the mould [ $^{\circ}\text{C}$ ].

Consequent modification of the equation (10) to the form of:

$$Q_2 - Q_3 - Q_4 = 0$$

and substitution of the equations (11), (12), (13) will result in the following equation of temperature balance:

$$m_k [c_L(t_l - t_s) + l + c_s(t_s - 20)] - m_k c_s (t_2 - 20) = \alpha F_{odl}(t_l - t_f)\tau_l \quad (14)$$

### Foundry Alloys Al-Si

Aluminium alloys which are characterized by low specific weight, good machinability and castability currently rank among the most widespread materials in the field of the foundry. The production volume of castings manufactured in the die casting process from aluminium alloys increases annually by approximately 12%. The technology still represents one of the progressive production methods of castings [10, 30].

Rapid development and utilization in the economic sphere can be observed in the case of silumin which is aluminium alloys based on an aluminium–silicon system. Silumin is characterized by low specific weight ( $2650 \text{ kg}\cdot\text{m}^{-3}$ ), high corrosion resistance, low tendency to seize, good running-in capacity in die casting, low tendency to shrinkage (0.5%) and cracking. Their machinability is slightly worse contrary of other aluminium alloys. Alloys of Al-Si type are applied especially in case of requirements for good castability and corrosion resistance [13, 14].

The selection of suitable aluminium alloy for the production of the casting is conditioned by design and foundry properties. Design properties include especially mechanical properties at standard or low or high temperature, extraordinary density-strength ratio, corrosion resistance, weldability and machinability. These properties can be adjusted. Foundry properties relate mainly to running-in capacity, low tendency to shrink, low inclination to crack and clink formation [14, 18].

According to the Al-Si equilibrium diagram, aluminium and silicon form a eutectic system with limited solubility of silicon in aluminium. The phase structure of binary alloys is characterized by Al-Si binary diagram in Figure 9 [3].

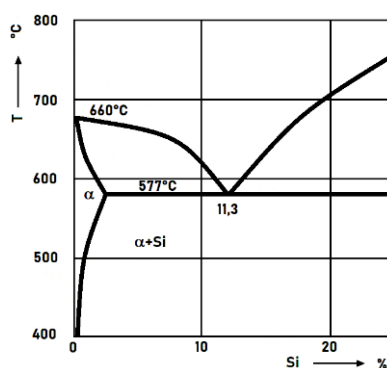


Fig. 9 Binary diagram Al-Si

Source: [3]

Aluminium as a basic element is characterized by low melting temperature (660°C), low specific weight and very good electric and thermal conductivity. Aluminium is also characterized by rather high ductility and relatively low strength properties. Silicon is brittle with a high melting temperature (1430°C) and with low specific weight and it crystallizes in a centred cubic lattice of a diamond type [3, 12].

Aluminium and silicon form binary eutectic  $\alpha$ +Si. Eutectic point is defined by the temperature of 577°C and with a silicon concentration of 11.3% (scientific literature states values of 11.7% and 12.5%).

The  $\alpha$  phase refers to the substitution solid solution of silicon in aluminium with a maximum solubility of 1.65% of silicon at eutectic temperature and 0.05 up to 0.1% of silicon at 200 °C. In binary systems, the eutectic represents a mixture of substitution solid solution  $\alpha$  and almost pure silicon. Metallographically, it is a two-phase structure containing dark grey silicon particles located in a light matrix of the  $\alpha$ -phase [3, 9, 21].

The amount, shape, size and distribution of free silicon are connected with the mechanical properties of binary alloys Al-Si. The  $\alpha$ -phase is soft and ductile and represents a coherent structural component of the eutectic. Eutectic is solid, soft and sufficiently ductile as it contains approximately 90% of the  $\alpha$ -phase and about 10% of silicon. The relatively high content of eutectic (40 up to 75%) in Al-Si alloys provides them with excellent running-in capacity and at the same time, it reduces their linear shrinkage and tendency to crack under the effects of heat and inclination to microporosity formation.

Al-Si based alloys are classified according to the Si content as follows:

- sub-eutectic (below 11.3% of Si),
- eutectic (about 11.3% of Si),
- supra-eutectic (over 11.3% of Si) [25, 26].

Variable solubility of silicon in aluminium in dependence on temperature resulted in the effort made to increase the strength properties of binary alloys by hardening. From the point of view of the possibility of hardening by heat treatment, the Al-Si based alloys (silumin) can be classified as follows:

a) non-hardenable alloys

They contain from 5 to 20% of Si as well as other admixtures out of which Mn appears to be the most important one as it eliminates the negative effect of Fe upon draw ability, ductility and foundry properties of silumin. The Cu admixture can increase endurance strength even though corrosion resistance gets slightly worse. The best foundry properties are typical for eutectic silumin containing from 10 up to 13 % of Si. The strength of such alloys (influenced by admixture content) ranges from 200 MPa up to 300 MPa and even more. They are highly resistant to corrosion and especially to water.

b) hardenable alloys

Apart from Si, they contain also Mg or Cu. Hardenability is assured by the existence of the Mg<sub>2</sub>Si or Al<sub>2</sub>Cu phase. The alloys in the injected and modified condition can reach ultimate tensile strength of over 300 MPa and they might be mechanically stressed at temperatures ranging from 250 up to 275°C [20, 27].

### Physical and Mechanical Properties of Aluminium Alloys

Table 1 presents an overview of basic physical properties. The presence of impurities and material conditions can considerably change some of the values. The majority of values are informative only.

**Table 1 Basic physical properties of aluminium alloys**

Thermal conductivity (W·m <sup>-1</sup> ·K <sup>-1</sup> )	96.2 – 142
Coefficient of thermal expansion (μm·m <sup>-1</sup> ·°K <sup>-1</sup> )	18 – 24.1
Melting range (°C)	549 – 603
Electrical conductivity (%IACS)	22 – 37
Density (g·cm <sup>-3</sup> )	2.6 – 2.85

Source: [26]

The mechanical properties of Al-Si based alloys are better in a liquid state than in the moulded one. They resist atmosphere effects well and their corrosion resistance approaches the resistance of pure aluminium. Alloys are subjected to heat treatment.

**Table 2 Informative values of mechanical properties of Al-Si alloys**

Young modulus (GPa)	71 – 82
Ultimate tensile strength (MPa)	228 – 330
Yield strength (Mpa)	97 – 250
Elongation (%/51 mm)	2.5 – 9
Hardness (BHN)	65 – 120
Shear strength (MPa)	130 – 200
Fatigue strength (MPa)	120 – 145

Source: [26]

Informative values of mechanical properties of Al-Si based alloys are present in Table 2. Improvement of mechanical properties of Al-Si alloys is achieved through injection, modification, the addition of alloying agents, heat treatment, and other non-conventional methods [17, 19].

## MATERIALS AND METHODS

Alloy AlSi9Cu3 was used in the experiment the chemical composition of which under DIN EN 1706 standard is present in Table 3. Figure 10 shows a particular casting used in the automotive industry which was also the subject of the research.

**Table 3 Chemical composition of alloy AlSi9Cu3 under DIN EN 1706 standard**

Chemical composition in weight %											
Al	Si	Cu	Mg	Mn	Fe	Zn	Ni	Sn	Cr	Ti	Pb
residual	8.5 – 10.0	2.0 – 3.5	0.1 – 0.5	0.1 – 0.4	max. 1	max. 0.3	max. 0.3	max. 0.1	max. 0.05	max. 0.15	max. 0.2



**Fig. 10 Non-machined casting with a gating system**

The automotive industry employs a dominant sub-eutectic alloy of the Al-Si-Cu type which is used for the production of castings such as engine blocks, gear cases, etc. The Cu element increases machinability and allows automatic hardening after fast cooling in water. Fast cooling results in the occurrence of supersaturated solution  $\alpha$  (Al), which splits apart and afterwards a precipitate is formed with subsequent structure hardening. Alloys with soluble admixture elements in the solid solution containing hardening phases released out of the solid solution can be hardened. This alloy also contains a specific amount of Mg being present in the hardening phase, which improves casting properties. The procedure is applied in serial production in the case of which cooling of castings in water is advantageous for less complicated separation of the gating system from the casting. Consequent natural hardening – referred to as ageing – is a process that considerably influences further machining of the casting. Achieving optimal machining conditions requires observation of the time lag between casting and processing procedures. In machining of the casting in a liquid state, the material adheres to a tool and its service life noticeably shortens. If machining is performed with a specific time lag,

the machining conditions considerably improve. Table 4 presents the physical properties of casting material and Table 5 presents the mechanical properties of casting used in experiments.

**Table 4 Physical properties of casting**

Density [ $\text{g}\cdot\text{cm}^{-3}$ ]	2700
Solid temperature [ $^{\circ}\text{C}$ ]	525
Liquid temperature [ $^{\circ}\text{C}$ ]	610

**Table 5 Mechanical properties of casting**

Ultimate tensile strength	min. 240 MPa
Yield point Rp 0.2	min. 140 MPa
Drawability A5	min. < 1
Brinell hardness test HB	min. 80

The experiments were performed with the die casting machine CLV 250 (Fig. 11) in the company dealing with the production of castings for the automotive industry.



**Fig. 11 Die casting machine CLV 250**

The basic parameters of production equipment designed for the production of castings are shown in Table 6.

**Table 6 Operation parameters of die casting machine designed for the production of castings CLV 250**

Dimensions	2 x 3,2 x 8,7 m
Weight	27 t
Engine performance	37 kW
Locking force	600 t
Injection force	65 t
Ejection force	35 t
Min./max. mould height	400-900 mm
Max. weight of Al-Si casting	12 kg

### **The setting of Technological Parameters of Die Casting**

Constantly set up speed of the plunger during chamber and gating system filling is  $0.15 \text{ m}\cdot\text{s}^{-1}$  and plunger speed, from the point when the chamber is filled and mould

cavity filling starts, is  $4.5 \text{ m}\cdot\text{s}^{-1}$ . Values of the melt temperature ( $660^\circ\text{C}$ ) and the mould temperature were set up to constant values during experiments. Casting solidification time from the point when the mould is filled up to its opening is set to 30 seconds. The standardly set pressure or holding pressure value in the filling chamber is 28 MPa.

Within the frame of research aimed at the achievement of diverse homogeneity of castings, the experimental values of the melt flow speed were selected so that laminar and turbulent modes of mould filling are assured. The experimental speed values of the plunger were defined as follows:  $3.5 - 4,5^* - 5.5 \text{ m}\cdot\text{s}^{-1}$  (\*value of  $4.5 \text{ m}\cdot\text{s}^{-1}$  is a standardly set up value in the production of castings).

Pressure acting upon liquid metal in the filling chamber must assure mould filling at an appropriate speed and optimal time. Pressure must be sufficient to overcome the resistance of solidifying mass of metal in thin cross-sections of the mould as well as the resistance of gasses remaining in the casting therefore diverse pressure or holding pressure variants are defined. Within the scope of research, the experimental magnitude of pressure or holding pressure in the filling chamber was determined to achieve the different quality of the castings:  $22 - 28^* - 32 \text{ MPa}$  (\*value of 28 MPa refers to standardly set pressure or holding pressure in production of the casting).

### **Tensile Test – Strength Limit**

Research of mechanical properties of materials is inevitable for their utilization under operation conditions. It is important to acquire knowledge of the structure and properties of produced components as well as of their behaviour in case of stress. To determine mechanical properties, a tensile test with testing specimens is used based on which it is possible to define ultimate tensile strength under respective ISO 6892-1:2009 standards. Consequently, the relation between ultimate tensile strength and pressing speed change with constantly set pressure–holding pressure values was examined. A universal TIRAtest machine was used as testing equipment (Fig. 12).



**Fig. 12 Universal testing machine TIRAtest 28100**

Source: [12]

### Preparation of Metallographic Specimens for Porosity Detection

In general, aluminium alloys represent the most harmful gasses such as water vapour, hydrogen and oxygen. The solubility of hydrogen in liquid aluminium is significant and increases with temperature. In the course of crystallization, hydrogen is released in the form of pores and bubbles. Water vapour also leads to the formation of hydrogen bubbles and therefore porosity of the casting was examined as it is directly influenced by the change in the melt temperature [2, 28]. To detect porosity, the parts of the casting were used which were identified as the spots of the possible occurrence of increased porosity with regards to changing pressing speed considered to be the technological parameter of die casting.

The circular saw MIKRON with the alternative of water cooling was used for the cutting of the casting. The technological parameters of cutting were selected for cutting material. The compressive force of a cutting wheel was set to the lowest value of a loading scale and rotations of the cutting wheel were set to maximum, i.e., 3000 rev./min<sup>-1</sup>. These precautions were taken to achieve the highest quality of the cutting. Consequently, the specimens were cast-in with dentacryl resin (Fig. 13).



Fig. 13 Specimens intended for grinding and polishing for optic microscopy

To examine porosity with a microscope, the examined specimens must be well prepared. Consequent preparation of the specimens included mechanical grinding with water and polishing with a diamond paste was performed with the use of a semi-automatic polishing machine Struers LaboPol-5 (Fig. 14).



Fig. 14 Grinding and polishing machine Struers LaboPol-5

Technological parameters of grinding:

- sandpaper with the grading of 1200,
- revolutions of the grinding wheel are 300 rev./min<sup>-1</sup>,



- compressive force of the grinding wheel acting upon specimens was selected in dependence on surface irregularities,
- grinding time depended on the surface quality of the specimen a single grinding cycle lasted for 3 minutes and the specimens were sufficiently ground after two grinding cycles (2x3 min.).

Further preparation of ground specimens included polishing with the same machine yet the grinding wheel was replaced by the polishing one. All of the diamond pastes with diverse grading dispose of special polishing wheels which had to be replaced with polishing paste, i.e., firstly, diamond paste with lubricating component DiaDuo with the grading of 3 micrometres and then diamond paste with the grading of 1 micrometre. The first dosing of the polishing paste was performed manually by estimation and consequently, in the course of polishing, the machine indicated the amount of polishing paste to add dropwise onto the polishing wheel.

Technological parameters of polishing:

- revolutions of the wheel –  $150 \text{ rev./min}^{-1}$ ,
- period of a single polishing cycle was 3 minutes, and all of the specimens were subjected to two polishing cycles, i.e.  $2 \times 3 \text{ min}$  in case of diamond paste with the grading of 3 micrometres and one cycle, i.e.,  $1 \times 3 \text{ minutes}$  in case of diamond paste with the grading of 1 micrometre,
- compressive force of the polishing when was set in dependence on the quality of a particular scratch pattern.

The final quality of the polished specimens was checked with the microscope 2303 Intraco Micro with a trinocular head (Fig. 15). When all of the three specimens had been examined, it was determined which of them met the required quality standards and which of them had to be re-polished.



**Fig. 15 Microscope 2303 Intraco Micro**

The porosity of the casting was evaluated by the optical microscope (microscope 2303 Intraco Micro) with a subsequent image import of the specimen scratch pattern to a camera interface to have the final image produced.

The final images of the individual specimens were processed using image analysis with the software Stream Motion by the Olympus company. The selected parts of the specimens for evaluation of porosity must be perfectly polished as each scratch

or other dents or cracks of the specimens could be evaluated as the pores by the software and the results of porosity measurement would be thus misrepresented. Probably, it would be the case of a higher percentage of porosity occurrence contrary to the actual situation. Porosity is evaluated by graphic filters in the program Stream Motion. The filters find a colour in the evaluated image to which they are set. Each of the filters disposes of defined sensitivity which prevents the intervention into the detection zone of another filter. Before measurement, the filters must be set to adequate sensitivity so that just the pores are evaluated. The setting is followed by the analysis of the objects in the images which differ in colour from their environment and meet all the required conditions. The program saves the results of all specimen values in the Tables.

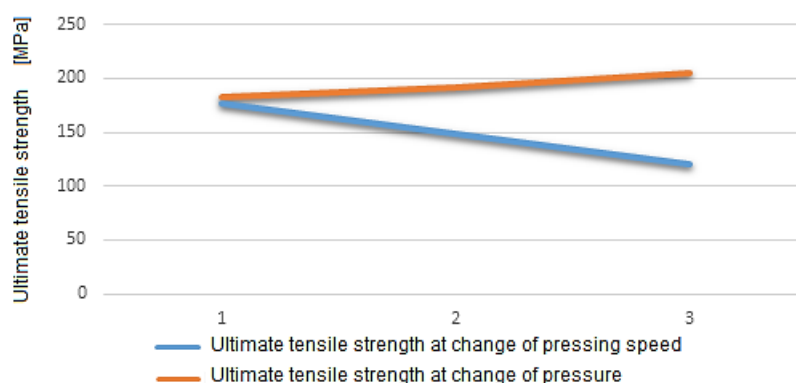
## RESULTS

One of the many options used for the production of castings is die-casting technology. The technology of metal dies casting ranks among the prime technologies. In the die casting process, the metal is pressed at high speed into the mould cavity. The principle rests in a change of kinetic energy to compressive energy. The entire process of die casting is influenced by different factors. The factors with a dominant effect on the quality of final castings include mainly die pressing speed, specific pressure acting upon the melt, holding pressure, mould cavity filling time, casting alloy temperature, and filling chamber temperature. Secondary factors must also be taken into consideration as they influence the entire process of die casting and the quality of produced castings such as the design of the casting and of the mould, effectivity of the machine in die casting, which all represents a complex of mutual bonds.

The conducted experiments serve for assessment of the influence of the set up technological parameters of die casting machines, especially of pressure or holding pressure in the filling chamber on physical and chemical properties of castings produced in the die casting process which are represented by ultimate tensile strength and by the porosity of castings.

### Evaluation of ultimate tensile strength

Ultimate tensile strength ranks among basic quantities for the evaluation of the mechanical properties of castings. The final ultimate strength of the individual testing specimens was evaluated independence on change of plunger speed during mould cavity filling which was on the levels of 3.5; 4.5 and 5.5 m·s<sup>-1</sup> with standardly pre-set pressure or holding pressure value of 28 MPa and with pressure or holding pressure which was determined on the following levels: 22; 28 and 32 MPa. About these values, ultimate tensile strength at constant plunger speed (4.5 m·s<sup>-1</sup>) in the filling chamber was measured. The measured values of ultimate tensile strength about the change of pressing speed and of pressure or of holding pressure in the mould cavity are shown in Figure 16.



**Fig. 16 The course of the tensile strength at the change of pressing speed and pressure**

Figure 16 shows a comparison of values of ultimate tensile strength about a change of pressing speed and of holding pressure. When comparing the measured values of ultimate tensile strength about the pressing speed of the plunger and holding pressure, it can be concluded that the highest values of ultimate tensile strength were measured in the case of lower values of the plunger and in the case of higher values of holding pressure.

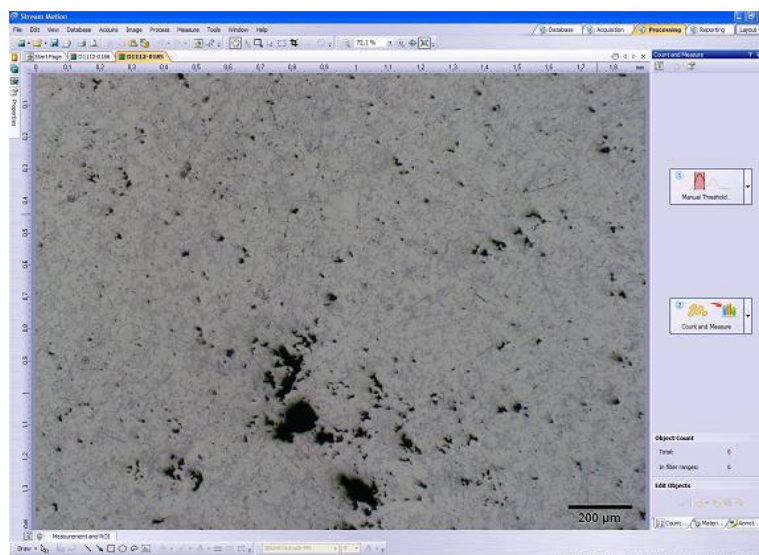
The lowest values of ultimate tensile strength were measured in the case of higher speed of plunger and in case of lower values of holding pressure. At higher speed values, detected was the slight mould opening with consequent injection in the dividing plane in the course of the forcing-in process. In dependence on the cross-section of the gating system, the speed was increased in the course of filling. About diverse mould cavity filling speed values, various types of filling could occur such as laminar filling, turbulent filling or their mutual combination.

### **Evaluation of casting porosity**

Completion of evaluation tests of ultimate tensile strength independence on change of pressure or of holding pressure in the mould cavity was followed by an examination of the inner structure and porosity of the castings with the application of testing bars. Apart from the aforementioned, the specimens were taken also from other parts of the castings which were identified as the point of the possible increase of porosity occurrence.

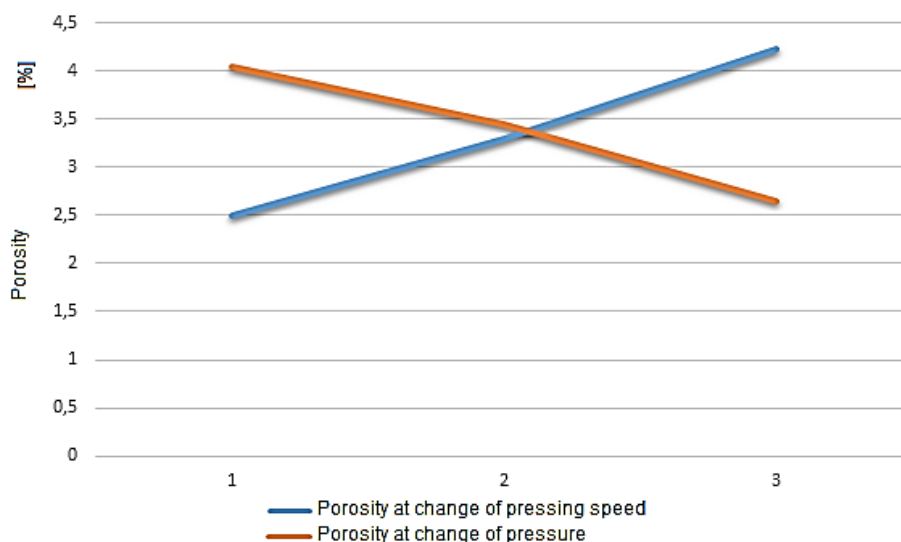
The porosity of the casting was evaluated by the optical microscope with a subsequent image import to have it analysed and processed by the software Stream Motion (Fig. 17).

The porosity of the casting is evaluated with the use of graphic filters in the program Stream Motion. Each of the filters disposes of defined sensitivity which prevents the intervention into the detection zone of another filter. Before measurement, the filters must be set to adequate sensitivity so that just the pores are evaluated. The setting is followed by the analysis of the objects in the images which differ in colour from their environment and meet all the required conditions. The program saved the results of all specimen values in the tables out of which the individual graphical dependences were generated.



**Fig. 17 Evaluation of porosity in the Stream Motion**

Figure 18 shows a comparison of porosity values about the change of plunger pressing speed and of holding pressure. Evaluation of casting porosity independence on change of pressure or of holding pressure in the mould cavity proved porosity decrease about holding pressure increase. The dependence is plotted in the graph in Figure 18. The measured porosity values of the examined samples pointed out the influence of the change of pressure or holding pressure in the mould cavity on the inner structure of the casting. An increase in pressure or holding pressure results in a decrease in porosity values of the casting as is shown in Figure 18.



**Fig. 18 Porosity values when changing pressing speed and back pressure**

Plunger pressing speed increases along with porosity values of casting which is shown in the Figure. Since in the case of different plunger pressing speed values different mould cavity filling types can be observed, it might be stated that porosity depends on mould cavity filling mode. When evaluating the porosity of the casting

independence on change of holding pressure in the mould cavity it was observed that porosity occurrence decreased as holding pressure increased. The measured porosity values of the examined specimens point out the influence of the change of plunger pressing speed on the inner structure of the casting. Comparison of porosity values of the casting in case of change of plunger pressing speed and of holding pressure pointed out the lowest value of porosity in case of the lowest plunger pressing speed and in case of the highest value of holding pressure in the mould cavity. The highest porosity values were observed in the case of the highest plunger pressing speed and in the case of the lowest holding pressure value in the mould cavity.

## CONCLUSIONS

The conducted experiments serve for assessment of the influence of technological parameters such as plunger speed and pressure or holding pressure on mechanical and utility properties of castings being produced in the die casting process. When the results had been evaluated, it could be assumed that ultimate tensile strength decreased and porosity occurrence increased in case of an increase in pressing speed of the plunger. In the case of lower values of plunger pressing speed, the share of porosity occurrence was lower which pointed out laminar development of mould cavity filling with the melt. The results of the individual tests and measurements confirm, from a scientific point of view, theoretical premises of the influence of the pressing speed of the plunger on the change of ultimate tensile strength and porosity of castings.

When examining the influence of the pressing speed of the plunger on ultimate tensile strength, the measured values of ultimate tensile strength tended to decrease in dependence on the increase in pressing speed of the plunger. Contrary to a single moment during which a considerable increase of ultimate tensile strength was detected at the highest pressing speed of the plunger, the entire development of dependence was similar to one of the values mentioned by the authors in [3, 9, 19, 30]. About the aforementioned facts, it has been proved and confirmed that mechanical properties are considerably influenced by mould cavity filling mode and thus lower values of castings speed of plunger are recommended to be opted for.

The conducted experiments serve for assessment of the influence of pressure or holding pressure on the ultimate tensile strength and porosity of castings produced in the die casting process. When the results had been evaluated, it could be assumed that ultimate tensile strength increased and porosity occurrence decreased in case of pressure or holding pressure increase in the mould cavity. Higher pressure values led to the undesired condition, i.e. slight opening of the mould with consequent injection in the dividing plane during the forcing-in process. The results of the individual tests and measurements confirm, from the scientific point of view, theoretical premises of the influence of pressure or of holding pressure in the mould cavity on the change of ultimate tensile strength and

porosity of castings. Due to higher holding pressure values, the pores were compressed in the course of pressing which resulted in a decrease in the percentage share of pores in the casting and an increase in values of ultimate tensile strength.

When the results had been evaluated, it could be assumed that ultimate tensile strength increased and porosity occurrence decreased in case of pressure or holding pressure increase in the mould cavity. Higher pressure values led to the undesired conditions, i.e. slight opening of the mould with consequent injection in the dividing plane during the forcing-in process. The results of the individual tests and measurements confirm, from the scientific point of view, theoretical premises of the influence of pressure or of holding pressure in the mould cavity on the change of ultimate tensile strength and porosity of castings. An increase in holding pressure in the mould cavity positively influenced the die casting process. Due to higher holding pressure values, the pores were compressed in the course of pressing which resulted in a decrease in the percentage share of pores in the casting and an increase in values of ultimate tensile strength.

The measured and evaluated values of the individual examined properties proved that the selected technological parameters, to a high degree, influenced both the final properties and the quality of castings produced in the die casting process. The technological parameter under monitoring – pressing speed of plunger or mould cavity filling speed along with mould cavity filling mode rank among basic factors influencing final casting quality most. Naturally, several other parameters such as melt temperature and cooling influenced the final properties of castings as well. These parameters in the form of cooling speed and of mould temperature remained constant. Structural parameters were influenced only by the melt temperature which is related to mould cavity filling speed. Melt speed depends on temperature because increasing temperature results in a decrease in the melt viscosity which causes an increase in its mobility under the action of the same pressure. As the melting speed is also determined by the mould cavity filling, it influences the melt cooling speed, too, due to the melt volume change in the course of the time when being in the contact with the mould surface following which the phenomena occurring in the mould cavity are mutually related and final properties of casting are influenced.

At the same time, the research proved the connection between the mechanical properties of the casting and the inner structure. Based on the results, a higher concentration of pores and cavities causes a considerable decline in strength in case of which a higher percentage porosity share led to a lower ultimate tensile strength value at the same pressing speed of the plunger. Contrary to the aforementioned, lower porosity share led to a higher ultimate tensile strength value at the same speed, too.

A higher porosity value at a higher mould cavity filling speed points out a lower degree of mould cavity filling which is caused by dispersed melt flow. Lower porosity values occur at lower mould cavity filling speed in case of laminar melt

flow. From the point of view of mould cavity filling speed, higher ultimate tensile strength and lower porosity it is desired to opt for a lower pressing speed of plunger or of mould cavity filling with the melt.

Holding pressure analysis proved that higher values more positively affect the final properties of the casting. Even though higher values of holding pressure shorten the mould service life and prolong the idle time in die casting, they positively influence the filling up of castings, and reduce air volume entrapped in the casting using which porosity occurrence decreases and the final quality of inner structure increases along with final strength. When the final values of ultimate tensile strength and porosity were analysed, it was proved that in the case of higher values of pressure or of holding pressure the value of ultimate tensile strength was higher and the percentage share of porosity occurrence was higher. To achieve a higher value of ultimate tensile strength and a lower percentage share of porosity occurrence, higher values of holding pressure in the mould cavity should be selected.

When comparing the results with those of other authors [5, 7, 32] who conducted research in the sphere of die casting, a similar or identical influence was proved in the case of examined technological parameters of die casting on final mechanical properties of casting and inner structure. An increase of the holding pressure value led to a considerable decrease of ultimate tensile strength and to its consequent increase in the case of the highest holding pressure value [7] contrary to values of our measurement in which the holding pressure increase led to ultimate tensile strength increase. Regarding the aforementioned facts, it cannot be unambiguously confirmed that an increase in the values of pressure or of holding pressure automatically leads to an increase in ultimate tensile strength values. The phenomena occurrence can be explained by the direct influence of several conditions, such as composition and temperature of the melt, on the development and results of experiments. When comparing the values of dependence of pressure or of holding pressure change in the mould cavity on porosity with other authors [5, 7, 32], the identical effect was proved. Holding pressure increase unambiguously caused a decrease in the percentage share of porosity occurrence in castings.

Regarding the comparison of the conducted research, a conclusion is possible to be drawn – the influence of ideal input conditions of the production process on the final quality of castings cannot be ambiguously and generally determined. The measured and evaluated data can be considered to be specific and valid for the particular combination of the selected technological parameters in both cases. The final quality and the examined quality properties depend on several other criteria such as melt and mould temperature, melt composition, the complexity of casting, and parameters of production equipment. etc. In an evaluation of results, it is inevitable to take into consideration testing conditions and the possible occurrence of faults.

From the point of view of acquiring the required quality of castings, increasing the production effectivity and decreasing the occurrence of faulty pieces in production, the optimal setting of technological parameters of die casting is rather significant which has also been unambiguously confirmed by the research. At the same time, the research has proved direct relation and mutual bonds between pressure or holding pressure in the mould cavity and the final mechanical properties of aluminium castings. To prevent the decrease in the final quality of castings, in the future it is desired to conduct research in different operation plants producing castings. In cases in which the companies use a higher amount of returnable material, it is recommended to plan the checks of properties of castings at particular intervals to prevent undesired changes in the melt composition and the final quality of the casting. The companies with the increasing trend of customers' complaints or of occurrence of defects or faults of produced components should implement into the production process the check aimed at testing mechanical properties and of inner structure about applied input technological parameters influencing the final quality of castings. Even though activities related to checks and additional testing influence the costs which thus increase, it is a good investment for the companies to assure the increase of quality and to satisfy the demands of customers.

From the point of view of science, the achieved results of experimental measurement confirm theoretical premises of dependence of ultimate tensile strength and porosity of castings on change of plunger speed. At the same time, the achieved results will serve as a ground for the technical preparation of the production of castings. In case of requirement for optimization of properties and the final quality of castings, the values of the examined technological parameters will be used as the starting point from the point of view of quality demands for the individual qualitative types of produced castings.

The achieved results proved that it is inevitable to take particular precautions in case of the optimization of input technological parameters in the process of die casting such as decreasing of plunger speed so that laminar melt flow in the mould cavity is achieved. About the adjustment of the values of the selected technological parameter, the increase of ultimate tensile strength is achieved along with the decrease in the percentage share of porosity occurrence in the castings. Knowledge describing the mutual bond and relation between technological parameters of die casting and final properties of castings represents a significant aspect from the point of view of technological practice which influences the required final quality of castings and increases the effectivity of the entire production process.

## **ACKNOWLEDGEMENTS**

*This document is part of the project and was supported by the project KEGA 015TUKE-4/2022 – Transfer of new knowledge from the field of testing and monitoring of technical systems into the educational process of technical subjects for the development of the Slovak industry.*



**REFERENCES**

- [1] Blondheim, D., Jr. – Monroe, A. – Blondheim, D. et al.: Macro Porosity Formation: A Study in High Pressure Die Casting – 2021. In: *International Journal of Metalcasting*, ISSN: 1939-5981
- [2] Gašpar, Š. – Paško, J.: Plunger pressing speed like the main factor influencing the mechanical properties of die casting – 2019. In: *MM Science Journal*, Volume: 2019, Pages: 2019-3493, ISSN: 1803-1269
- [3] Majerník, R. - Ružbarský, J.: The impact of technological parameters of die casting to casting porosity - 2016. In: *MM Science Journal*. Vol. 2016, no. October (2016), p. 1047-1050. - ISSN 1803-1269
- [4] Caceres, Ch. – Selling, Bi.: Casting defects and the tensile properties of an Al-Si-Mg alloy – 1996. In: *Materials Science and Engineering A-STRUCTURAL MATERIALS PROPERTIES MICROSTRUCTURE AND PROCESSING* Volume: 220 Issue: 1-2 Pages: 109-116, ISSN: 0921-5093
- [5] Ragan, E. at al.: *Liatie kovov pod tlakom*. 1.vyd. Prešov, 2007, 392 s., ISBN 978-80-8073-979-9.
- [6] Cao, H. – Hao, M. – Shen, Ch. et al.: The influence of different vacuum degree on the porosity and mechanical properties of aluminium die casting – 2017. In: *Vacuum* Volume: 146 Pages: 278-281, ISSN: 0042-207X
- [7] Gašpar, Š. – Paško, J.: Pressing Speed, Specific Pressure and Mechanical Properties of Aluminium Cast – 2016. In: *Archives of Foundry Engineering*, Volume: 16, Issue: 2, Pages: 45-50, ISSN: 1897-3310
- [8] Lumley, R. – Deeva, N. – Gershenzon, M.: An evaluation of quality parameters for high pressure die castings – 2011. In: *International Journal of Metalcasting*, Volume: 5 Issue: 3 Pages: 37-56 , ISSN: 1939-5981
- [9] Paško, J. - Gašpár, Š. - Ružbarský, J.: Die casting defects of castings from silumin - 2014. In: *Applied Mechanics and Materials: ICMEAT 2013: 3<sup>rd</sup> International Conference on Materials Engineering for Advanced Technologies: Brisbane, 31. December - 2. January 2014*. Vol. 510 (2014), p. 91-96. - ISBN 978-303835018-7
- [10] Ružbarský, J.: Origin and spreading of cracks due to thermal fatigue in case of metal moulds - 2020. In: *MM Science Journal* - 2020, No. March (2020), p. 3716-3722, ISSN 1803-1269
- [11] Trudonoshyn, O. – Randelzhofer, P. – Koerner, C.: Heat treatment of high-pressure die casting Al-Mg-Si-Mn-Zn alloys – 2021. In: *Journal of Alloys and Compounds*, Volume: 872, ISSN: 0925-8388
- [12] Bolat, C. – Akgun, Ic. – Goksenli, A.: Effect of ageing heat treatment on compressive characteristics of bimodal aluminium syntactic foams produced by cold chamber die casting – 2021. In: *International Journal of Metalcasting*, ISSN: 1939-5981
- [13] Qi, M. – Kang, Y. – Li, J. et al.: Synchronously Improving the Thermal Conductivity and Mechanical Properties of Al-Si-Fe-Mg-Cu-Zn Alloy Die Castings Through Ultrasonic-Assisted Rheofforming – 2021. In: *Acta Metallurgica Sinica-ENGLISH LETTERS*, ISSN: 1006-7191
- [14] Diler, Ea.: Microstructure and mechanical properties of Al-Si-Cu-Fe alloy-based ceramic particle-reinforced nanocomposites and microcomposites and a modified model to predict the yield strength of nanocomposites – 2021. In: *Proceedings of The Institution of Mechanical Engineers PART L-Journal of Materials-Design and Applications*, ISSN: 1464-4207
- [15] Ružbarský, J. - Majerník, R.: Theoretical regulation of delimitation of metal level decrease in the furnace in case of pneumatic dosing device of metal - 2017. In: *Manufacturing Technology*. Vol. 17, no. 1 (2017), p. 84-86. - ISSN 1213-2489
- [16] Kang, Hj. – Yoon, Ph. – Lee, Gh. et al.: Evaluation of the gas porosity and mechanical properties of vacuum assisted pore-free die-cast Al-Si-Cu alloy – 2021. In: *Vacuum* – 2021. Volume: 184. ISSN: 0042-207X

- [17] Alemdag, Y. – Karabiyik, S. – Mikhaylovskaya, Av. et al.: Effect of multi-directional hot forging process on the microstructure and mechanical properties of Al-Si based alloy containing high amount of Zn and Cu – 2021, In *Materials Science and Engineering A-STRUCTURAL MATERIALS PROPERTIES MICROSTRUCTURE AND PROCESSING*, Volume: 803, ISSN: 0921-5093
- [18] Qin, Pf. – Yang, Q. – He, YY. et al.: Microstructure and mechanical properties of high-strength high-pressure die-cast Mg-4Al-3La-1Ca-0.3Mn alloy – 2021. In: *Rare Metals*, Volume: 40, Issue: 10, Pages: 2956-2963, ISSN: 1001-0521
- [19] Cai, Q. – Mendis, Cl. – Chang, It.H. et al.: Microstructure and mechanical properties of new die-cast quaternary Al-Cu-Si-Mg alloys – 2021. In: *Materials Science and Engineering A-STRUCTURAL MATERIALS PROPERTIES MICROSTRUCTURE AND PROCESSING*, Volume: 800, ISSN: 0921-5093
- [20] Ružbarský, J.: Al-Si Alloy Casts by Die Casting A Case Study, Cham: Springer Nature - 2019. - 71 s. - ISBN 978-3-030-25149-9
- [21] Yuan, Ly. – Han, Pw. – Asghar, G. et al.: Development of High Strength and Toughness Non-Heated Al-Mg-Si Alloys for High-Pressure Die-Casting – 2021. In: *Acta Metallurgica Sinica-English Letters*, Volume: 34, Issue: 6, Pages: 845-860, ISSN: 1006-7191
- [22] Ružbarský, J. – Sitko, J.: Possibilities of Pressure Die Casting of Iron Alloys - 2019. In: *Management Systems in Production Engineering* – 2019. Vol. 27, No. 4 (2019), s. 199-204, ISSN 2299-0461
- [23] Cho, J. – Kim, CH.: The relationship between dendrite arm spacing and cooling rate of al-si casting alloys in high pressure die casting – 2014. In: *International Journal of Metalcasting*, Volume: 8 Issue: 1 Pages: 49-55, ISSN: 1939-5981
- [24] Szymczak, T. – Gumienny, G. – Klimek, L. et al.: Characteristics of Al-Si Alloys with High Melting Point Elements for High Pressure Die Casting – 2020. In: *Materials*, Volume: 13, Issue: 21, ISSN 1996-1944
- [25] Qi, M. – Kang, Y. – Li, J. et al.: Microstructures refinement and mechanical properties enhancement of aluminium and magnesium alloys by combining distributary-confluence channel process for semisolid slurry preparation with high pressure die-casting – 2020. In: *Journal of Materials Processing Technology*, Volume: 285, ISSN: 0924-0136
- [26] Ragan, E. - Ružbarský, J.: Parameters stating in the die cavity – 2006. In: *Materiálové Inžinierstvo*, Vol. 13, No. 3, p. 21-22, - ISSN 1335-0803
- [27] Szymczak, T. – Gumienny, G. – Klimek, L. et al.: Microstructural Characteristics of AlSi9Cu3 (Fe) Alloy with High Melting Point Elements – 2020. In: *Metals*, Volume: 10, Issue: 10, ISSN 2075-4701
- [28] Silmbroth, M. – Bozorgi, S. – Bozorgi, S.: Analysis of the Mechanical Properties of Secondary AlZnMg (Cu) Die-Cast Alloys – 2020. In: *International Journal of Metalcasting*, ISSN: 1939-5981
- [29] Ružbarský, J. - Paško, J. - Gašpár, Š.: Techniques of Die Casting., Lüdenscheid: RAM-Verlag - 2014. - 199 p.. - ISBN 978-3-942303-29-3
- [30] Zhang, Y. – Lordan, E. – Dou, K. et al.: Influence of porosity characteristics on the variability in mechanical properties of high pressure die casting (HPDC) AlSi7MgMn alloys – 2020. In: *Journal of Manufacturing Processes*, Volume: 56, Pages: 500-509, Part: A, ISSN: 1526-6125
- [31] Zhang, JZ. – Zuo, LJ. – Feng, J. et al.: Effect of thermal exposure on microstructure and mechanical properties of Al-Si-Cu-Ni-Mg alloy produced by different casting technologies – 2020. In: *Transactions of Nonferrous Metals Society of China*, Volume: 30, Issue: 7, Pages: 1717-1730 ISSN: 1003-6326
- [32] Gašpar, Š. – Paško, J.: Technological parameters of die casting and quality of casting from en ac46500 alloy – 2016. In: *Metalurgija*, Volume: 55, Issue: 3, Pages: 391-394, ISSN: 0543-5846

- [33] Wang, F. – Ma, Q. – Meng, W. et al.: Experimental study on the heat transfer behaviour and contact pressure at the casting-mould interface in the squeeze casting of aluminium alloy – 2017. In: *International Journal of Heat and Mass Transfer*, Volume: 112, Pages: 1032-1043, ISSN: 0017-9310

**Juraj Ružbarský**

Technical University of Košice  
Faculty of Manufacturing Technologies  
Štúrova 31, 080 01 Prešov, Slovakia  
e-mail: juraj.ruzbarsky@tuke.sk

**Tibor Krenický**

Technical University of Košice  
Faculty of Manufacturing Technologies  
Štúrova 31, 080 01 Prešov, Slovakia  
e-mail: tibor.krenicky@tuke.sk

**Jozef Maščeník**

Technical University of Košice  
Faculty of Manufacturing Technologies  
Štúrova 31, 080 01 Prešov, Slovakia  
e-mail: jozef.mascenik@tuke.sk

**Tomáš Coranič**

Technical University of Košice  
Faculty of Manufacturing Technologies  
Štúrova 31, 080 01 Prešov, Slovakia  
e-mail: tomas.coranic@tuke.sk