

RISK MANAGEMENT IN THE PROCESS OF PERSONNEL ALLOCATION TO JOBS

doi: 10.2478/czoto-2020-0011

Date of submission of the article to the Editor: 28/11/2019

Date of acceptance of the article by the Editor: 15/02/2020

Marek Krynke¹ – *orcid id: 0000-0003-4417-1955*

¹Czestochowa University of Technology, **Poland**

Abstract: The strategy should be designed in such a way as the risk management can operate not only as a system for avoiding losses, but also risk management should allow recognizing and making use of occasions and create new opportunities for the organization. Risk management includes both an evaluation (analytical and evaluation) undertaking as well as planning and control activities aimed at minimizing (reducing) risk or maintaining it at an acceptable level. Security management can in particular be reduced to the issue of risk management, because risk is a quantitative expression of the functioning of systems in an environment where there are active sources of threats to system security. The article presents the problem of personnel allocation in hazardous conditions, emphasizing the possibilities of undertaking optimization actions in the safety management process. A mathematical model was formulated for this issue. An algorithm solving the problem of personnel allocation is presented. The proposed analysis is the starting point for determining the risk when using multi-station work.

Keywords: risk management, work organization, multi-station work, linear programming

1. INTRODUCTION

In recent years, the topic of risk management has become more important because appropriate project management techniques are now seen as a way to achieve the desired change in the company. In addition, projects are characterized by increasing complexity, the use of various skills and technologies, and the resulting dependencies lead to a higher degree of uncertainty in the outcome of a given project (Olton, 2014; Wróblewski, 2015).

All ventures involve some kind of risk. This may be due to the nature of the work (for example, if there are many new elements), the type of available resources, the contracts in force or the political factors affecting the project. All risk should usually not be eliminated - this can block innovation and suppress creativity.

However, it is possible to manage projects in a way that recognizes the existence of risk and prepares methods if this risk actually occurs.

There can be various production planning problems. In planning, it is necessary to determine the most favorable organizational solutions of cooperating means of work (Klimek and Łebkowski, 2011), allocate production tasks, determine the needs and availability of resources (Grzelczak, 2018; Drłjača, 2019), assess the costs of work, analyze the risks (Kozioł-Kaczorek and Pietrych, 2016) etc. However, the basic planning issue is the appointment of a team to perform a specific scope of work in the determined or sought optimal risk. Selected issues from this set will be the subject of considerations and proposals of planning techniques in this work.

2. RISK MANAGEMENT

Risk management includes both an evaluation undertaking as well as planning and control activities aimed at minimizing risk or maintaining it at an acceptable level. Safety management can in particular be reduced to the issue of risk management, because risk is a quantitative expression of the functioning of systems in an environment where there are current sources of threats to the safety of systems (Kapustka et al., 2019).

Risk management requires:

- identify mechanisms to keep risk under control and ensure that it is taken into account,
- measures identifying potential risk in the undertaking,
- assessing the likelihood of potential risk materializing,
- assessment of the likely effects of the risk,
- formulating actions to avoid the risk,
- develop risk reduction measures if risk avoidance measures fail,
- determining the urgency of the risk and taking appropriate countermeasures.

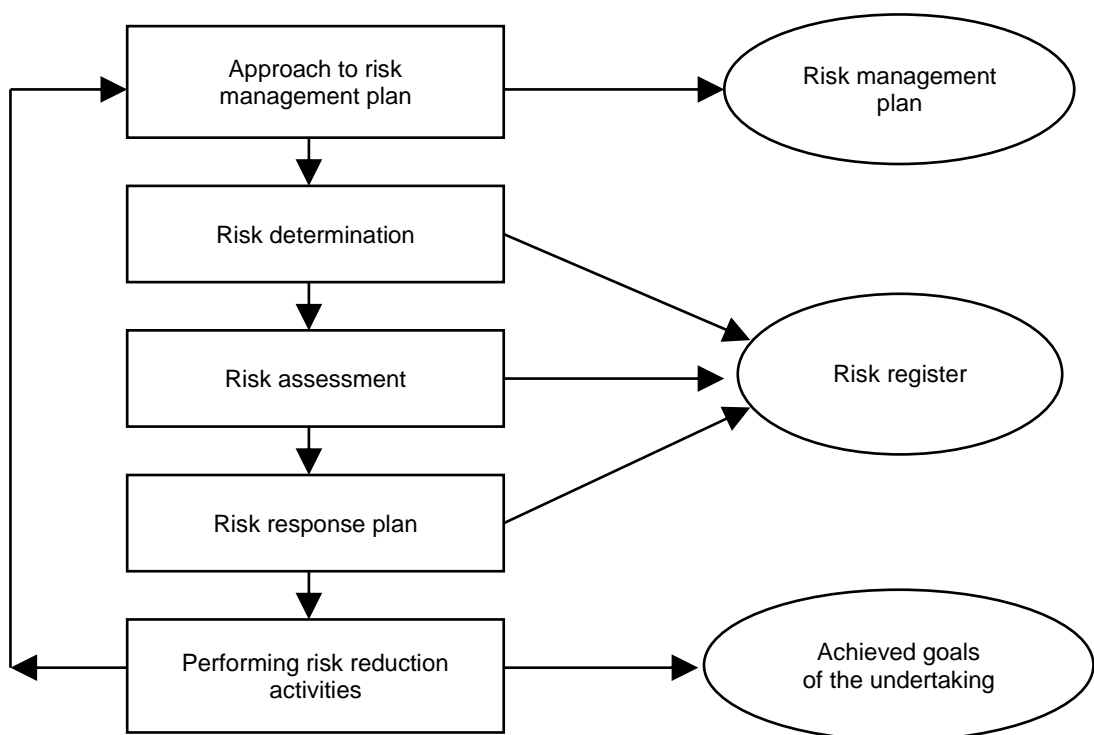


Fig. 1. Risk management process

Source: own study

When defining a threat, it is taken into account that each threat has two characteristics:

- uncertainty - a hazard may or may not occur,
- loss – if a hazard occurs, it will cause some loss or other undesirable effects.

Due to the different risks identified, it is necessary to estimate their impact and likelihood of occurrence. Then it is possible to focus on those types of risks which have the highest probability of occurrence and on those which, if they occur, will cause the highest damage to the project (Knop, K., 2015).

We will use an example to illustrate the risk assessment problem. Let's consider the risk of poor contractor performance. More precisely, this risk can be broken down into three elements:

- staff do not work at the pace set in preparing estimates,
- the personnel do not comply with the programming standards of the system developer,
- inexperienced team managers have difficulty in managing personnel.

The significance of these effects will depend on the volume of work performed. If we use many external contractors, then these effects can be serious. If these contractors constitute only a small part of the executive team, then the impact will be smaller. Sometimes it is necessary to estimate the impact, for example by calculating the probability of occurrence and assessing whether the impact is large, moderate or small. A risk map can be used for this purpose (Wróblewski, 2015).

The risk map shows the impact of each type of risk on one axis and their probability on the other (Table 1). The types of risk shown in the lower left corner are those that have the greatest impact and probability. Hence, presumably, they will require the most attention.

Table 1
Risk level expressed in the form of impact S and their probability P

Impact (S) / Probability (P)	1	2	3	4	5
1	1	2	3	4	5
2	2	4	6	8	10
3	3	6	9	12	15
4	4	8	12	16	20
5	5	10	15	20	25

Source: own study

The risk scoring makes it possible to order the risks according to their severity or the criteria of the risk scoring matrix. For the different values of the product of probability and impact, appropriate reactions shall be determined. Risks with high probability and high impact (high) require urgent attention from the organization. Risks with low probability and high impact and low impact and high probability of occurrence (averages, which are in the middle of the risk assessment matrix) shall be discussed and monitored. In some cases the organization may take further action. Risks with low impact and low probability (low) represent the lowest risk to the organization (Wróblewski, 2015).

3. RESEARCH PROBLEM

A certain company dealing in the production of steel constructions (balustrades, exit gates, fence spans) must plan its monthly activity in order to get the highest profit possible. The company has at its disposal the following orders, which will require the following works:

- Z1 – cutting steel sections,
- Z2 – welding steel elements (balustrades, entrance gates),
- Z3 – preparation of products for varnishing, grinding joints, cleaning, etc.,
- Z4 – lacquering of products,
- Z5 – montage of balcony balustrades,
- Z6 – montage of entrance gates and fence spans.

To describe a given situation with a mathematical model, one should find a way to characterize tasks using numbers. Important parameters are the employee's salary and the time needed to perform a specific task (Table 2).

Table 2

Number of work units required for a given order and remuneration per unit of work for a given order

Task type	Z1	Z2	Z3	Z4	Z5	Z6
Required number of work units [h]	50	400	150	100	150	100
gross income for man-hour [PLN]	40	60	40	80	50	40

Source: own study

Five employees work in the company. The working time and remuneration of employees can be clearly described numerically. It was assumed that employees E1 and E2 are employed full-time (140h), employees E3, E4 part-time (70h), overtime if necessary while employee E5 a contracted employee. The more difficult issue is the assessment of work efficiency. The solution to this problem is to determine the effectiveness coefficients of a given employee working on a given task. Table 3 presents the preference matrix and employee remuneration.

Table 3

Employee preference matrix for particular tasks

Employee	E1	E2	E3	E4	E5
Working time [h]	140	140	>70	>70	>0
Salary per man-hour [PLN]	20	25	30	30	35
Z1	1	0.5	0.7	2	1.5
Z2	1.9	1.8	0.6	2	1.1
Z3	0.8	2	1.6	1.9	1.3
Z4	1.5	0.8	0.8	1	0.9
Z5	0.8	1.9	0.6	1.1	1.2
Z6	0.9	2	1.7	2	1.3

Source: own study

In Table 4 the risk of employees performing individual production tasks is assigned. The impact of each type of risk and its probability of occurrence were considered.

Table 4
Risk level expressed in the form of impact S and their probability P

Employee	E1		E2		E3		E4		E5	
	Impact (S)	Probability (P)	Impact (S)	Probability (P)	Impact (S)	Probability (P)	Impact (S)	Probability (P)	Impact (S)	Probability (P)
Z1	1	3	4	5	3	5	1	3	4	3
Z2	5	1	2	1	1	3	4	2	4	5
Z3	2	4	3	3	2	2	3	4	5	2
Z4	4	4	2	4	1	2	1	2	3	1
Z5	2	1	4	5	4	2	2	5	1	1
Z6	3	5	2	4	4	2	2	3	2	2

Source: own study

The mathematical model of the classical problem of employee allocation can be presented as a problem of minimizing the cost function (Krynke and Mielczarek, 2018). Two optimization cases were included in this study. The first taking into account the minimization of costs and risks (function F_{cr}) and the second case concerning the minimization of costs only (function F_c):

$$F_{cr} = \sum_{i=1}^5 \sum_{j=1}^6 (h_{ji} \cdot S_{ji} \cdot P_{ji} \cdot w_i) \rightarrow \min \tag{1}$$

$$F_c = \sum_{i=1}^5 \sum_{j=1}^6 (h_{ji} \cdot w_i) \rightarrow \min \tag{2}$$

where:

- h_{ji} – number of possible employee's working hours i for task j ,
- S_{ji} – employee risk impact coefficient i performing task j ,
- P_{ji} – employee risk probability coefficient i performing task j ,
- w_i – salary for an employee i .

It is a function that should be minimized. At the same time, the available standard hours of work:

$$\begin{aligned}
 h_{11} + h_{21} + h_{31} + h_{41} + h_{51} + h_{61} &= 140 \\
 h_{11} + h_{21} + h_{31} + h_{41} + h_{51} + h_{61} &= 140 \\
 h_{13} + h_{23} + h_{33} + h_{43} + h_{53} + h_{63} &> 70 \\
 h_{14} + h_{24} + h_{34} + h_{44} + h_{54} + h_{64} &> 70 \\
 h_{15} + h_{25} + h_{35} + h_{45} + h_{55} + h_{65} &> 0 \\
 h_{13} + h_{24} + h_{34} + h_{43} + h_{54} + h_{63} &< 200 \\
 h_{14} + h_{24} + h_{34} + h_{44} + h_{54} + h_{64} &< 200 \\
 h_{15} + h_{25} + h_{35} + h_{45} + h_{55} + h_{65} &< 200
 \end{aligned}
 \tag{3}$$

and requirement concerning production order – limitations of work units:

$$\begin{aligned}
 h_{11}a_{11} + h_{12}a_{12} + h_{13}a_{13} + h_{14}a_{14} + h_{15}a_{15} &= 50 \\
 h_{21}a_{21} + h_{22}a_{22} + h_{23}a_{23} + h_{24}a_{24} + h_{25}a_{25} &= 400 \\
 h_{31}a_{31} + h_{32}a_{32} + h_{33}a_{33} + h_{34}a_{34} + h_{35}a_{35} &= 150 \\
 h_{41}a_{41} + h_{42}a_{42} + h_{43}a_{43} + h_{44}a_{44} + h_{45}a_{45} &= 100 \\
 h_{51}a_{51} + h_{52}a_{52} + h_{53}a_{53} + h_{54}a_{54} + h_{55}a_{55} &= 150 \\
 h_{61}a_{61} + h_{62}a_{62} + h_{63}a_{63} + h_{64}a_{64} + h_{65}a_{65} &= 100
 \end{aligned}
 \tag{4}$$

where:

a_{ij} – elements of the matrix containing constraint coefficients.

Defined task is possible to be solved in the environment Octave. Octave is a free programme for numerical calculations (mathematical and engineering calculations). This language is intuitive and friendly (for a mathematician) (Nagar, 2018). With basic functionality in Octave there are operations on matrices and number of numerical methods solving linear and non-linear problems. Octave is software featuring a high-level programming language, primarily intended for numerical computations. Octave helps in solving linear and nonlinear problems numerically, and it is used for performing other numerical experiments with the use of a language that is mostly compatible with MATLAB.

The issue of assigning employees to particular tasks was solved using the glpk command. The GNU Linear Programming Kit (GLPK) is a software package intended for solving large-scale linear programming (LP), mixed integer programming (MIP), and other related problems (Piechna, 2012).

GLPK uses the revised simplex method and the primal-dual interior point method for non-integer problems and the branch-and-bound algorithm together with Gomory's mixed integer cuts for (mixed) integer problems.

4. ANALYSIS OF THE RESULTS

After doing calculations, the optimal values of working hours of individual employees was obtained. In Fig. 2 optimal assigning project tasks to employees was described.

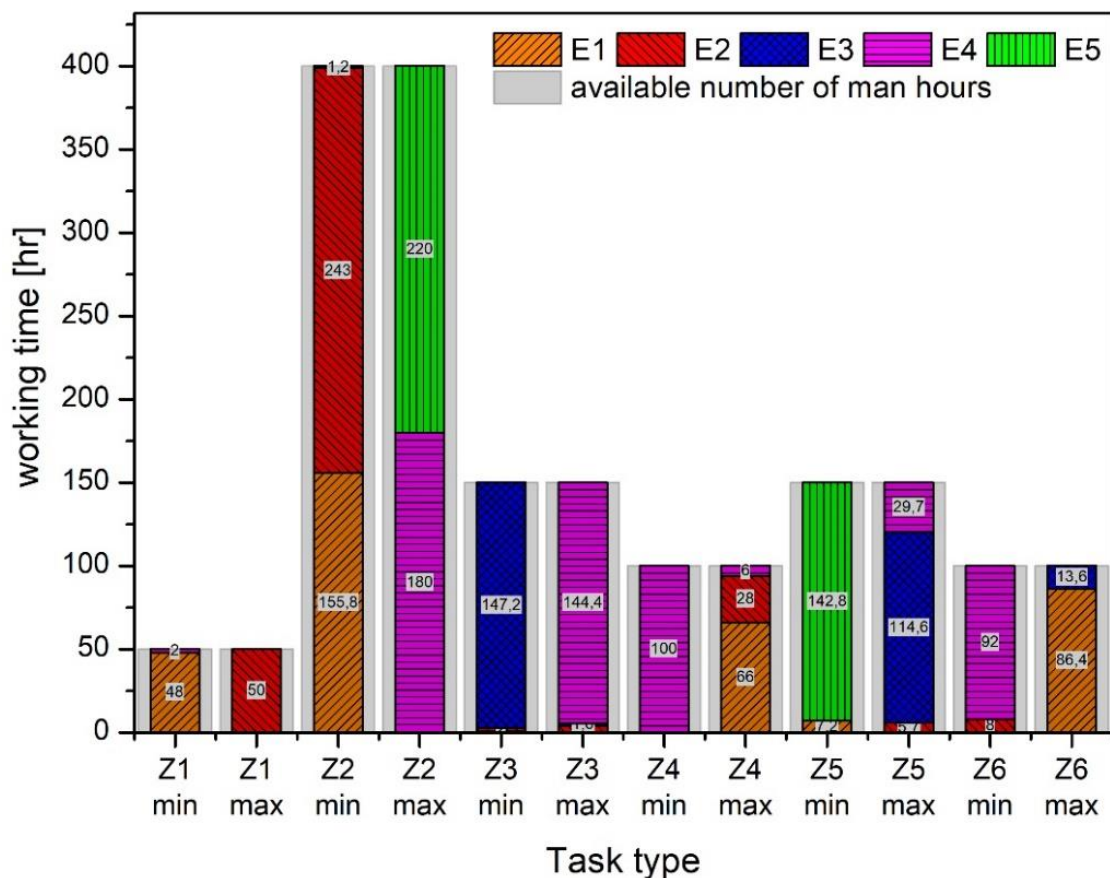


Fig. 2. Optimal assigning tasks to individual employees

Source: own study

The chart compares two extreme cases of allocating tasks to employees. The first – the most desirable, taking into account the minimization of risk and costs, and the second – the least favorable, for the maximization of costs and risk.

Figure 3 presents risk maps for the four extreme cases of optimizing the analyzed problem. Figures 3a and 3b relate to the objective function (2) which does not include risk analysis. In turn, Figures 3c and 3d show a situation where cost optimization also includes risk minimization.

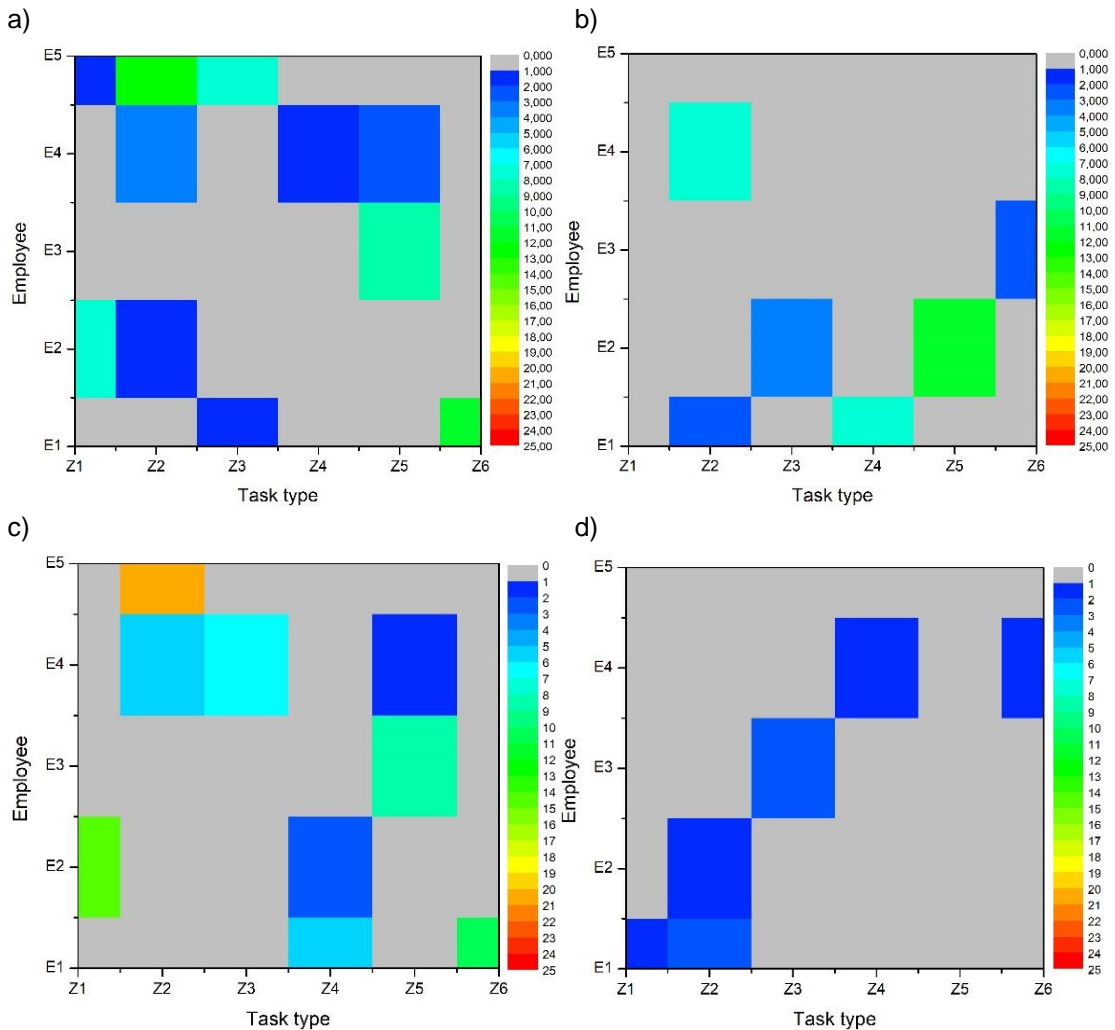


Fig. 3. Risk map for the case: a) maximizing costs, b) minimizing costs, c) maximizing costs and risk, d) minimizing costs and risk

Source: own study

The presented maps clearly show that it is important to consider risk in optimizing production costs.

Figure 4 presents a graph in which the resultant risk numbers for various optimization criteria are compared. In addition, the maximum risk that will occur when allocating a given employee to a given workplace is shown. Of course, the best results are obtained taking into account the risk analysis in the allocation of tasks to individual employees.

In Fig. 5 the use of the time fund by individual employees the background of available standard hours of work was presented. It can be seen that in order to execute the entrusted tasks, employees E3 and E4 have to work overtime.

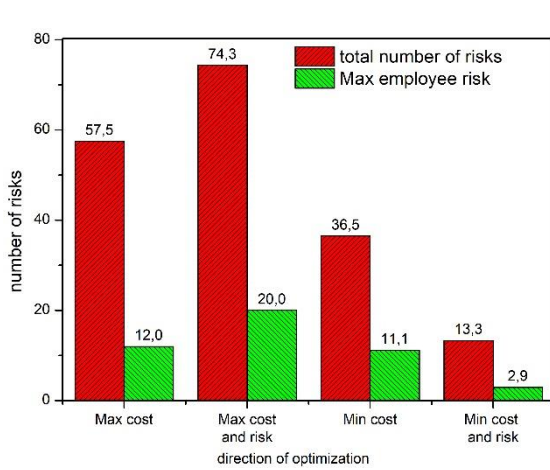


Fig. 4. The number of risks for various optimization criteria

Source: own study

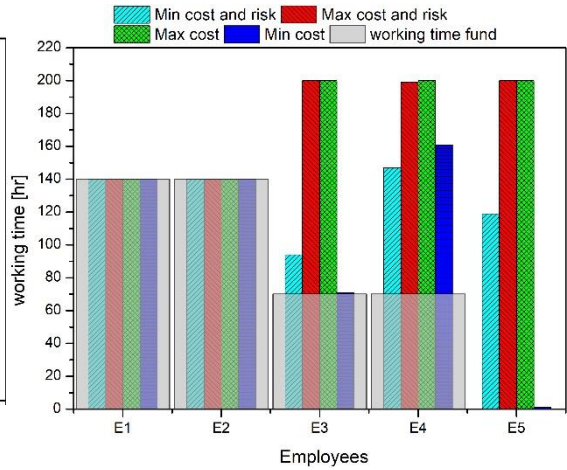


Fig. 5. The use of the time fund by individual employees for various optimization criteria

Source: own study

In Fig. 6 the profit generated by the individual employees was presented. An interesting situation occurred in the case of employee E5. As a highly qualified employee, it has relatively high pay. So much that the execution of such tasks entrusted to him bring loss.

In Fig. 7 a graph that compares the total cost of the realization of the order program for four extreme cases was presented.

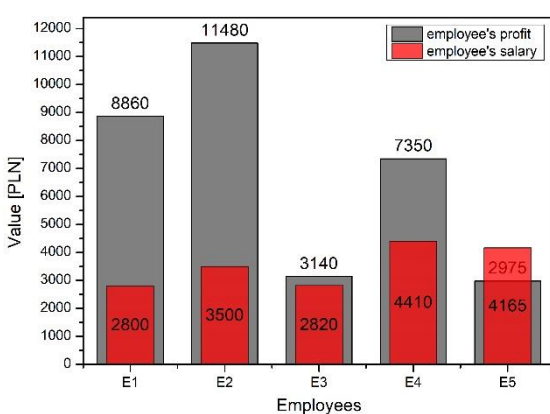


Fig. 6. Profit generated by the individual employees

Source: own study

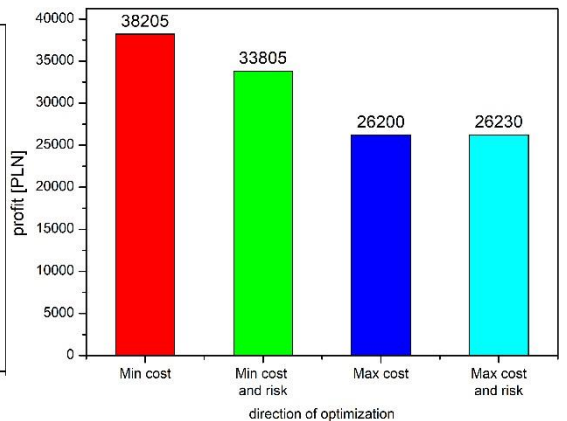


Fig. 7. Total profit of the realization of the production program for various optimization criteria

Source: own study

The first situation concerns the optimal solution, when profits are subjected to the maximization by minimizing costs without considering the risk. For comparison, the second one shows a situation when profits were also maximized but additionally minimized risk. The next two cases show extremely undesirable situations where costs and risks are greatest. It should be noted that in the first case a profit is obtained by 13% higher than in situation 2, however, with almost 3 times higher risk. Therefore, the best assignment of tasks to employees is considered to be the solution obtained while minimizing costs and risk.

5. CONCLUSION

Risk cannot be completely avoided, but it can be managed so that is recognized and its impact avoided or mitigated. There are many areas where risk for the project may arise, starting with business, commercial and contractual risk to technical risk. The basic sequence of actions in risk management is its identification, assessment and formulation and implementation of risk reduction measures..

Problems related to the assignment of employees to perform specific works are often trivialized. Most often, contractors want to accomplish tasks quickly, without thinking about the global effects of such behavior. The adduced example shows that in the case of the most unfavorable allocation of tasks to employees, it will lead to a significant reduction in profits and may increase the risk of undesirable situations. It is also possible that there may be a situation in which the optimal assignment of tasks causes that some employees bring a loss (situation of the E5 employee in the adducted analyzes). However, in global terms it is still beneficial for the implementation of specific orders. The above mathematical model and the method of its solution is applicable in many engineering problems, eg the problem of optimal use of resources, implementation of the cheapest order, etc.

The presented example can be analogously extended to a larger number of employees and tasks as well as months.

REFERENCES

- Drljača, M., 2019. *Reversible Supply Chain in function of competitiveness*, Production Engineering Archives, 22, 30-35.
- Grzelczak, A., 2018. *Norma czasu a zarządzanie produkcją w aspekcie pracy wielostanowiskowej*, Innowacje w Zarządzaniu i Inżynierii Produkcji, Knosala R. (red.), Oficyna Wydawnicza Polskiego Towarzystwa Zarządzania Produkcją, 432-440.
- Kapustka, K., Klimecka-Tatar, D., Ziegmann, G., 2019. *The management and potential risk reduction in the processing of rare earths elements*, System Safety: Human - Technical Facility – Environment, 1(1), DOI: 10.2478/czoto-2019-0010
- Klimek, M., Łebkowski, P., 2011. *Algorytm dla problemu losowego przydziału personelu*, Logistyka, 2, 299-306.
- Knop, K., 2015. *Statistical analysis of responses concerning the importance of human and production or services issues in various companies*, Production Engineering Archives, 7, 40-44.
- Kozioł-Kaczorek, D., Pietrych, Ł., 2016. *Grafy a teoria stabilnych alokacji*, Ekonometria Econometrics, 3(53), 102-114.
- Krynke, M., Mielczarek, K., 2018. *Applications of linear programming to optimize the cost-benefit criterion in production processes*, MATEC Web of Conferences, Vol.183, 6s.
- Nagar, S., 2018. *Introduction to Octave: For Engineers and Scientists*, Apress, NewYork.
- Olton, I., 2014. *The social innovations harmonised with the company personnel management system*. *Polish Journal of Management Studies* 10, 92-97.
- Piechna, A., 2012. *Zadanie programowania liniowego w środowisku GNU Octave*, PiKI, 55, 58-62.
- Wróblewski, D., 2015. *Zarządzanie ryzykiem – przegląd wybranych metodyk*, Wydawnictwo CNBOP-PIB, DOI: 10.17381/2015.1