

DEVELOPMENT OF THE ALGORITHMIC SOFTWARE AND INFORMATION SUPPLIES FOR THE LINGUISTIC ONTOLOGY BASED ON STRUCTURED ELECTRONIC ENCYCLOPEDIA RESOURCE FORMATION METHOD

Anton Mykhailiuk¹, Vasyl Teslyuk²

¹Borys Grinchenko Kyiv University, Kyiv, Ukraine, ²Lviv Polytechnic National University, CAD Department, Lviv, Ukraine

Abstract. Intellectualization of the information retrieval process requires appliance of the specialized linguistic resources. The domain specific linguistic ontology might be one of such resources. This article presents software organization method for automated formation of the ontological knowledge base by converting structured encyclopaedic resource to the appropriate ontology objects. The concepts ontology database creation procedures, concepts hierarchies and associative relations networks are presented and also studies of the qualitative and quantitative composition of the current experimental ontology based on Ukrainian Wikipedia segment are performed.

Keywords: linguistic ontology, semantic relations, structured encyclopaedia

ROZWÓJ OPROGRAMOWANIA ALGORYTMICZNEGO I ŚRODKÓW INFORMATYCZNYCH DLA ONTOLOGII JĘZYKOWEJ BAZUJĄCYCH NA METODZIE TWORZENIA STRUKTURALNEGO ELEKTRONICZNEGO ZASOBU ENCYKLOPEDIYCZNEGO

Streszczenie. Intelktualizacja procesu wyszukiwania informacji wymaga urządzenia z wyspecjalizowanymi zasobami lingwistycznymi. Specyficzna ontologia językowa może być domeną jednego z takich zasobów. W artykule przedstawiono oprogramowanie do automatycznego tworzenia bazy wiedzy ontologicznej przez konwersję zorganizowanych zasobów encyklopedycznych do odpowiednich obiektów ontologicznych. Przedstawiono koncepcje procedury tworzenia bazy danych ontologii, koncepcję hierarchii oraz sieci relacji, a także przeprowadzone badania jakościowego i ilościowego składu bieżącej ontologii eksperymentalnej opartej na ukraińskiej wersji Wikipedii.

Słowa kluczowe: ontologia językowa, relacje semantyczne, zorganizowany encyklopedii

Introduction

The content analysis and information retrieval procedures intellectualization requires development of the specialized linguistic resources that could increase the efficiency of information-analytical software tools. This would give a significant impetus to the development of such linguistic resources as synonyms dictionaries, computer thesaurus [2], semantic networks [12], etc. In particular, the interest to ontologies use for objects including text information has immensely increased in recent times, it is not coincidentally as the ontology by nature should reflect the structure of human knowledge about the world, which could be used for infusing essential components in the process of information objects elaboration, their analysis, as well as information search through these items procedures.

The ontology concept is very widely interpreted in general philosophical terms, as well as in the context of information technologies. This, primarily, is due to the fact that ontology can vary by the representation level, purpose, scope of application and methods for their formation, etc. As one of the most common areas where the ontology application seems to be appropriate and promising is the information retrieval field (primarily search [6, 7] or informational monitoring [8] of text objects in the global or local information network), the ontology should be considered from the linguistics perspective as objects have text nature. A linguistic ontology is a special knowledge base that describes the outer world concepts and the relations among them. On the other hand, this is a special class of ontologies, where concepts are formed on the basis of language units that are related to a specific subject area [2].

1. The linguistic ontologies features analysis

Based on the references analysis, the following important features for structurally-logical characteristics of similar ontologies can be highlighted:

- each subject field concept is presented in the ontology by a synset – set of close synonyms that have similar meanings;
- each synset has some meaning that is represented by a unique interpretation;

- different concepts can have the same linguistic representation, in this case, it is talked about disambiguated terms and semantic differentiation of such concepts is possible by using interpretations;
- all synsets are combined into a single hierarchical terms taxonomy from abstract concepts to concrete ones;
- ontology synsets are linked together by semantic relations, the most common relations are association and hyponym-hyperonym [2].

In addition, the ontologies use in automatic mode for synthetic languages, which include Ukrainian language, requires normal word forms for ontology concepts.

An ontology formation by software means involves separate text data analysis, concepts separation and identification of links among them in accordance with the specified semantic relations. Unfortunately, this procedure requires too complicated semantic analysis apparatus, which, however, does not guarantee the ontology quality due to natural texts interpretation ambiguity. The solution to this problem lies in bringing the collection documents of encyclopedic (vocabulary) type, which have a clear structure and are formed by experts. The free electronic encyclopedia Wikipedia [14] is an example of such structured collection. Its articles have concepts descriptions, moreover the narrative part has quite clear structure and, in addition, contains links to other articles. This enables automation of such documents processing and an ontology development.

Therefore, the purpose of the presented study is to develop ways of software organization, which would enable automatic or semi-automatic mode for creation a linguistic ontology knowledge base on bases of the certain language segment Wikipedia articles (e.g., Ukrainian segment) for application in retrieval process, in particular, in quasiharmonic search procedures [9].

2. Development of the input data structure

The ontology development software has to use the structural organization of Wikipedia materials features. The articles are formed with the use of a special format MediaWiki [5] (fig. 1). This format allows unique description of the structural elements (headers, sections, links, meta elements, etc.) and their efficient processing in automatic mode. The entire archive collection for a particular language Wikipedia articles segment is stored in the

form of an XML document [3, 4, 5, 10, 11, 13] and is available for downloading. The XML markup allows selecting necessary components for further processing. Fig. 1 shows an example of a node that describes one of the Ukrainian segment articles. This fragment illustrates the XML node structure for the article describing "Tuple" concept. The node contains not only the article source code, but also some additional metainformation. <title> (article title), and <text> (text of the article) fields are of the greatest interest for the content analysis and the problem solving.

```
<page>
<title> Cortege </title>
<id>19488</id>
<revision>
<timestamp>2010-01-21T18:45:56Z</timestamp>
<contributor>
<username>Igor Yalovecky</username>
</contributor>
<text xml:space="preserve">"Cortege" or "n"-ка&nbsp;
— in [[mathematics]] ordered and [[finite set|finite]] set of
elements ...
== See also ==
* [[Descartes product]]
* [[Formal language]]
[[Category: Theory of Sets]]
[[Category: Relational Data Model]]
[[en:Tuple]] [[ru:Кортеж]]
</text>
</revision>
</page>
```

Fig. 1. The Wikipedia article XML document fragment

Table 1. The types of Wikipedia articles

Articles type	Description
Explanatory articles	Articles describing a particular concept, event or phenomenon. Accordingly to the title is the main source of the encyclopedia information content and serve as the main source for the ontologies .
Articles describing the multi-valued concept	This kind of articles is designed to store a list of all currently available in the corresponding Wikipedia segment means of some term. The following articles contain links to the appropriate explanatory article, if it is available, and a short, unique description for each semantic meanings of the term. The main indicator of such articles is the proprietary tags <i>[[disambig]]</i> at the beginning of the text.
Categories articles	Article describing the concept-category from the general Wikipedia categories hierarchy. In the explanatory articles, one or more of such concepts can also be specified as a parent category.
Articles describing the files	File articles describe the Wikipedia file objects (e.g. images) and contain information specific for the respective objects (references, size, type, etc.)
Incomplete articles	Explanatory articles often link to articles, which due to some reasons, are not yet written. They do not have the narrative part, but have the title.
Service articles	Such articles do not have direct informational value for the user, and are used in the Wikipedia developing process. In particular they might be article templates, helps, comments, discussions, etc.

The entire set of Wikipedia articles by various criteria can be attributed to several groups which are depicted in the table. 1.

Analysis of the Wikipedia structure allows concluding that Wikipedia articles along with reciprocal internal links create a prototype of ontological knowledge bases [14]. The main role in this case is played by the explanatory articles and categories article, the multivalued concepts articles group performs a supporting role in development of the explanatory articles for each of the meaning. In addition, the incomplete articles can be used to identify relations among other articles if those contain the according link.

3. Development of the output data information model

The detected Wikipedia structure features allow examining the software for linguistic ontology creation as means of Wikipedia elements conversion into the appropriate ontologies objects. Since the last will be actively used in retrieval procedure, their storage with an effective and prompt access to them can be resolved by applying the databases system. According to the logical organization of the ontology, fig. 2 shows the designed structural scheme of a relational database that contains the ontologies main components and relations among them. The result of the ontology information content formation would be filled appropriate values of the database tables. Lets consider in details all the relational links in the database. Synset is a central relational relation which reflects the ontology synset. It contains the following attributes: a unique identifier (id), a symbolic representation of a sinseta in Ukrainian (ua), Russian (ru) and English (en), a unique semantic interpretation of a synset (descr). The ru and en fields are introduced to establish a potential ontologies connection with the similar ontologies, created on the basis of Russian and English Wikipedia segments. Depending on the requirements, a set of languages can be enhanced by adding the appropriate fields in the synset relational relation or completely removed from additional language attributes, leaving only the main language name synset.

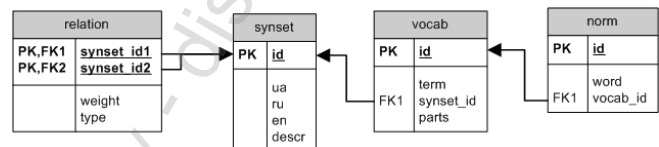


Fig. 2. The ontologies database structure

Vocab is an auxiliary relational link designed to store all synonymic synset inputs. It consists of a unique identifier (id), a term, which is a symbolic representation of synonymic input (term), an identifier of the parent synset (synset_id) and a field that contains number of words present in term (parts). Norm is an auxiliary relational link for storing word normal forms that make up the term symbolic representation from Vocab. It consists of a unique identifier (id), a character based representation of a word from a term normal form (word) and the identifier of the parent term from Vocab (vocab_id). Relation is the keyword relational link that reflects existing relations among the ontology concepts. The synset_id1 and synset_id2 fields contain synsets identifiers, between which there is a semantic relations. The weight filed characterizes this relationship by a certain weight value, the higher the value, the stronger is the relations between synsets. Finally, the type field stores the semantic relation type, thus, in the quasiharmonic search context there are two types of relations — sssociation and hyperonym-hyperonym.

Such source data structural organization allows forming a hierarchically structured ontology knowledge base for specific domain field, which will describe the concepts (the concept) of outer world and a variety of relations linking these concepts. This knowledge base can be used as a semantic core for quasiharmonic search process. The quasiharmonic approach will allow including semantics in nonsemantic search engines through the use of semantic coherence notion that is embedded in the ontological knowledge base, during the search query formation. To modify the search query within the quasiharmonic search it is proposed to use the knowledge base for domain field via three directions. The first direction - fixing terms from the search query using certain ontological knowledge base notions: the terms are allocated with the use the normal words forms (norm) table, and with the help of vocab table they are bind with a certain synset in case of one valued relation, or the of homonymy resolving procedure for a given term, in the case of its ambiguity is initiated. Fig. 3 shows the database query diagram, which allows determining the corresponding synsets for the normalized words from a user search query (e.g. word1, word2, etc.).

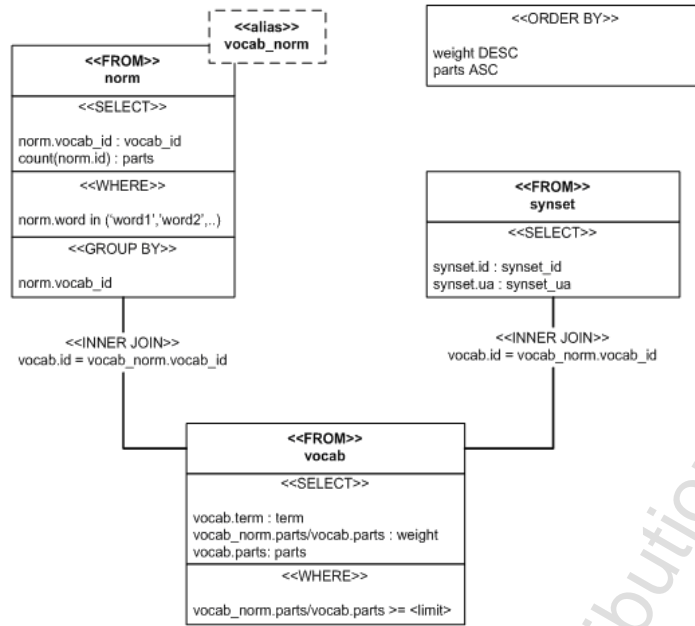


Fig. 3. The database query scheme for searching synsets, which match the words from the search query

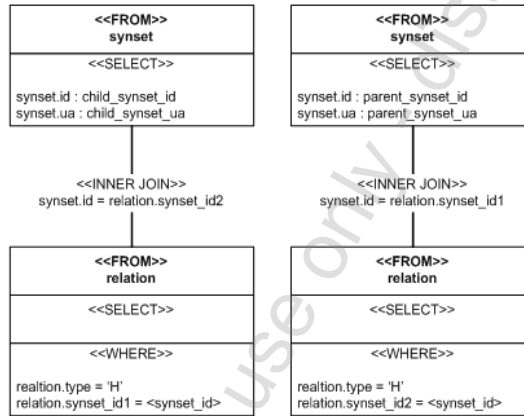


Fig. 4. The database queries scheme for subsidiary and parental elements search

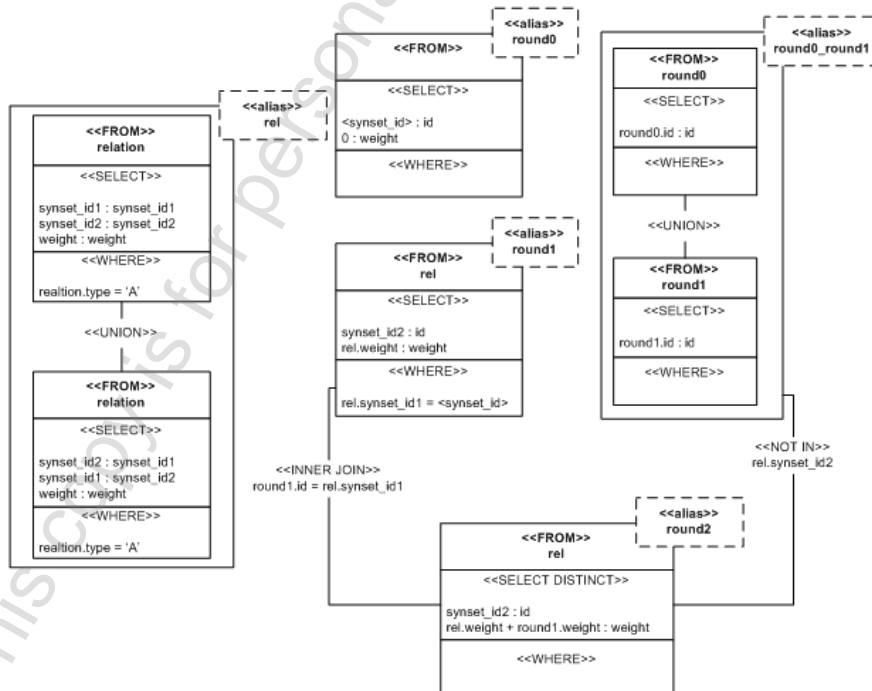


Fig. 5. The database query scheme for searching the ontology semantic cut

This copy is for personal use only - distribution prohibited.

This copy is for personal use only - distribution prohibited.



In this way the implicit search query modification is done, as it goes from the words set plane into the concepts plane.

The second way is request modification by refinement or enlargement of the query. It is done due to synonymic concepts groups usage, as each concept from the synsets table (synset) can have multiple synonymic representations in the form of terms from a terms table (vocab). Modification may also be done due to concepts relations through common parent elements in the ontology hierarchical structure, and also due to parental and subsidiary concepts. Fig. 4 shows the database query diagram for the according subsidiary and parental synsets search for the selected synset (<synset_id>).

It is possible to move focus from the general search results to more vague and vice versa by navigating the ontology vertical ties from the relation table, and inclusion into the query concepts logically associated with the the initial query version terms, but more or less specific from them depending on the user's information interest.

Finally, the third direction is the request modification by the search direction management through the semantically linked environment of the current query concepts set. The mechanism for automatic search and visualization of the domain specific ontology sections, that are mostly gravitated to the query concepts group, enables nonlinear (i.e. by hidden associative relations) modifying the request for clarification or change of the search vector. For this aim in the domain field ontology, with the use of the relation semantic table, subnets of the specific radius are determined, each of them has the according query notion in its center. Fig. 5 shows the database query diagram for searching the first (round1) and the second (round2) synsets rounds from some synset <synset_id>. The zero round (round0) is entered by the synset and the temporary table round0_round1 is intended to exclude synsets, which already are included in the previous rounds from the second round (round2).

The intersection of these subnets, taking into account the weight (weight) generates the ontology cut by request concepts and can point out the ontological s areas that are semantically most gravitated towards the user's search interests

4. The algorithmic organization of the ontology creation

The ontology formation process can be divided into several stages, laid into the basis of the corresponding algorithm:

- preparatory phase;
- stage of database synsets creation;
- stage of hierarchical relations construction;
- stage of associative relations construction;
- correction phase.

In accordance to the presented general algorithm for ontology creation the process begins with the XML data parsing and the corresponding synset base formation and completes with implementation of the corresponding correction of the formed ontology database in the automatic or manual mode if one is needed.

The developed algorithm has sufficient flexibility of the ontology formation process, in the same time providing simplicity and reliability of its programming implementation and possibility of further functionality enlargement by introducing additional methods.

The presented in the chart (Fig. 6) class mediawiki_parser provides all the above steps for the ontology creation. Since the source data of the Wikipedia articles are available in XML document format, the initial phase with the main objective of XML-data parsing and their preparation for further processing is required. According to the data segment presented above, it is essential to navigate to each subsequent article (page node) in the ontologies creation process. The title (title node) and the text of the article (text node) from a page node subtree are of further interest for further ontology creation.

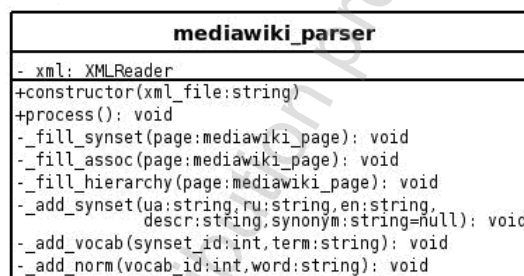
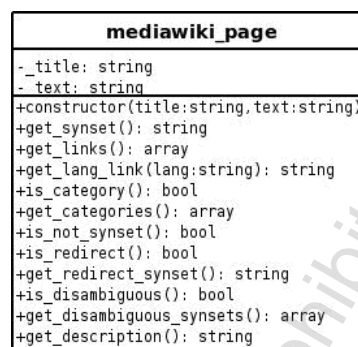


Fig. 6. The Wikipedia class diagram in MediaWiki format

The instance of mediawiki_page class for work with the Wikipedia page in the MediaWiki format (fig. 6) is created on the basis of the received data. It allows manipulating the article data, doing various checks, selecting logical sections, etc. According to the diagram (fig. 6) the mediawiki_page class implements the following important methods:

- get_synset — returns the symbolic synset representation for this article type (if possible);
- get_links — analyzes the article text, and returns the links set to other Wikipedia articles;
- get_lang_link (lang) — returns reference to the corresponding article written in another language according to the parameter lang if such exists;
- is_category — checks whether the notion described in this article has the category status;
- get_categories — returns a list of categories, which include this article;
- is_not_synset — checks whether a concept described in this article can be interpreted as a synset;
- is_redirect — checks whether a given article is only a reference to another one;
- get_redirect_synset — returns the symbolic representations of synset, to whose article it is referred;
- is_disambiguous — checks whether this article describes a multivalued concept;
- get_disambiguous_synsets — returns a list of synsets with the same spelling but with different interpretations formed according to the multivalued concept article content;
- get_description — returns the interpretation of the notion described in this article.

All the above described class methods are actively used at the according ontology formation stages. After the preparatory phase comes the turn to fill the ontology database. The process is encapsulated in the process method of the mediawiki_parser class. Fig. 7 presents pseudocode of this method.

At the database synsets creation stage, in fact, the ontology basis its conceptual part is formed. In each article by analysis of its title and text the type of concept that it describes is determined and the synset, vocab and norm tables are accordingly filled. For this purposes the following mediawiki_parser class methods are used: _add_synset, _add_vocab and _add_norm. It should be noted that the method _add_synset automatically adds the information into the synset dictionary using the _add_vocab

method, which, in its turn, automatically triggers the `_add_norm` method. Fig. 8 presents the pseudocode, which abstractly shows the sequence of actions at this stage (`_fill_synset` method of the `mediawiki_parser` class).

```

/*Create XMLReader */
xml = new XMLReader(xml_file);
/*Form synsets database */
/* Read the next page node, while it is possible */
while (xml_page = xml->next('page')) do
    /*Create article object */
    page = new mediawiki_page(xml_page->get('title'), xml_page->get('text'));
    /*Launch synsets filing method based on the current article */
    this->_fill_synset(page);
end while;
/*Return the XMLReader indicator at the beginning of the file */
xml->reset();
/*form ontology relations */
/* Read the next page node, while it is possible */
while (xml_page = xml->next('page')) do
    /* Create article object */
    page = new mediawiki_page(xml_page->get('title'), xml_page->get('text'));
    /*Launch hierarchal relations filling method*/
    this->_fill_hierarchy(page);
    /* Start the filling method of associative connections */
    this->_fill_assoc(page);
end while;

```

Fig. 7. Pseudocode for the ontology database filling

The ontology hierarchical relations creation stage, as it was noted earlier, is based on the use of Wikipedia articles hierarchies that describe the category. At the end of each explanatory article or one describing the category the list of parental categories to which this article belongs is indicated. It is easy to notice that within the Wikipedia one concept may refer to several categories at the same time.

```

/*If article does not describe synset*/
if page->is_not_synset() then
    return; /*stop work*/
/*If article describes reference to another one */
else if page->is_redirect() then
    /*Add new synset with symbolic presentation of the concept from the article, */
    /* to which it is redirected, the current article concept is given as a synonym */
    this->_add_synset(page->get_redirect_synset(), "", "", page->get_synset());
/*If article describes many-valued concept */
else if page->is_disambiguos() then
    /*Get list of all synsets and their explanations */
    list(synset, description) = page->get_disambiguos_synsets();
    /*Create new synset for each entry from he list */
    for each record in list(synset, description) do
        /*Add new synset (synset) with the definition (description)*/
        /*the current article title gives as a synonym */
        this->_add_synset(synset, "", "", description, page->get_synset());
    end for;
/*If article describes concept or category */
else
    /*Add new synset */
    this->_add_synset(
        page->get_synset(),
        page->get_lang_link('ru'),
        page->get_lang_link('en'),
        page->get_description());
end if;

```

Fig. 8. Pseudocode for the ontology synsets base filling

The hierarchical structure formed in this way will differ from the classic terms hierarchy, where each term has only one more general concept (in other words, only one parent). However, this limitation does not correspond to the real relations among concepts, since for most of them it is impossible to uniquely detect only one parent. Therefore, the direct conversion of all Wikipedia

categorical links into the hierarchical structure of linguistic ontology synsets is regarded as the most optimal, provided that during the design of toolkits, which will use direct hyperonymy relations, the above feature of such relations formation will be taken into account. According to this pseudocode the `_fill_hierarchy` method will have the structure shown in fig. 9.

```

/* If article does not describe concept or category */
if page->is_not_synset() OR page->is_redirect() OR page->is_disambiguos() then
    return; /*stop work*/
/* If article describes concept or category */
else
    /*For each article category */
    for each category in page->get_categories() do
        /*Save the hierarchy relation with relation weigh equal to w0*/
        database->relation->insert(
            'synset_id1' = category,
            'synset_id2' = page->get_synset(),
            'type' = 'H',
            'weight' = w0
        );
    end for;
end if;

```

Fig. 9. Pseudocode for ontology hierarchical relations formation

The associative relations formation stage fundamentally differs from the hierarchical relations formation stage only by the fact that here for relations identification the links to other Wikipedia articles (and, consequently, other concepts in ontologies) in the current article text are used. Moreover, since the link can be repeated, and there also might be reverse links (when the article to which one was referred contains a backlink), this allows increasing this relation weight by some delta value, thereby reflecting the semantic relation strengthening. The higher number of such links, the stronger the relationship among articles, respectively, the greater must be the weight ratio. In order to distribute the relations weight in the ontology uniformly enough, delta should be chosen relatively small in accordance with the initial weight value w_0 . The associative relations are filled in the `_fill_assoc` method, its pseudocode can be seen in fig. 10.

Finally, the last step is an optional correction phase of already created in the previous stages ontological base. It can be done automatically (for example, removing possible service concepts and their relations), and by manual editing of the ontological base by ontology editors (for example, removal of irrelevant or erroneous relations etc.). This correction may be helpful due to partial transparency of the automatic ontology formation and the availability of proprietary information in the primary source, which can be displayed in a specific encyclopedia articles (e.g., category "article starting from the letter "A", etc.), which should not be included in the ontology.

5. Results and conclusions

For creation and analysis of an experimental linguistic ontology the research prototype of the Ukrainian Wikipedia segment into the appropriate Ukrainian ontological knowledge base conversion software has been developed. The results of the software module for linguistic ontology based on the Ukrainian Wikipedia segment articles detected during the experiment are included in the table 2. The observed quantitative characteristics allow arguing that this ontology covers quite wide area of human knowledge and can be used in information systems. It should also be mentioned that the developed ontology is only the initial phase, the basis for the further work for experts and, at the same time, scientific-information resource for research and experiments in the search technology field. In further work with the developed ontology, it is possible to provide new concepts and links or remove the false ones.


```

/* If article does not describe concept or category */
if page->is_not_synset() OR page->is_redirect() OR page->is_disambiguous()
    return; /* stop work */
/* If article describes concept or category */
else
    /* For each reference to another article */
    for each link in page->get_links() do
        /* If current relation was already included into the database */
        if database->relation->select_where(
            'synset_id1' == page->get_synset(),
            'synset_id2' == link) then
            /* Update the weight ratio with some value delta */
            line = database->relation->select_where(
                'synset_id1' == page->get_synset(),
                'synset_id2' == link);
            line->update(weight = weight + delta);
        else
            /* Save associative relation with weight ratio equal to w0 */
            database->relation->insert(
                'synset_id1' = link,
                'synset_id2' = page->get_synset(),
                'type' = 'A',
                'weight' = w0
            );
        end if;
    end for;
end if;

```

Fig. 10. Pseudocode for ontology associative relations formation

Table 2. Quantitative characteristics of the ontology

Characteristic	Quantitative value
Synsets number	243948
Average number of words in synset	0.15
Number of hierarchical relations	127366
Number of associative relations	2658584

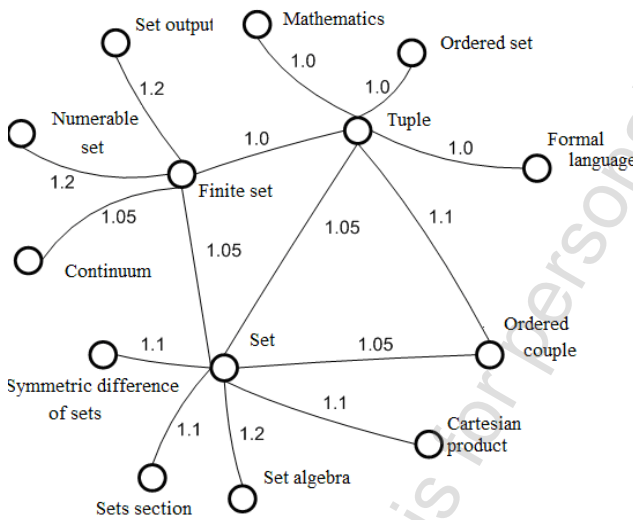


Fig. 11. Fragment of the developed ontology associative relations

The qualitative analysis of the developed ontologies is, in general, actually impossible, taking into account very large number of concepts and relations among them. This process requires long-term practical use of the ontology and considerable human and time resources. Improvement of the ontological knowledge base quality must be performed in parallel with its usage in the development of information retrieval, content analysis

procedures, etc. However, the estimation can be done by means of selective analysis. For this aim several small scatter subnets (such as shown in fig. 11) from different parts of the ontology are build and assess the major links among synsets.

Analysis of these fragments allows concluding that concepts and relations among them, with some minor exceptions, mostly correspond to the conceptual structure of the subject areas. Thus, qualitative composition of the ontology and adequacy of the relations can be considered quite acceptable for use in information retrieval field.

Thus, the presented ontology formation procedures enable relatively easy automatic development of quite large linguistic ontology, which would meet the basic requirements to such resource.

In addition, since Wikipedia as the primary source of information for ontology development is multilingual, in perspective it is possible to create cross-language ontologies, which would greatly expand the scope of their application.

Literature

- [1] Barrett D.J.: MediaWiki, O'Reilly Media 2008.
- [2] Dobrov B.V., Lukashevich N.V.: The linguistic ontology of nature sciences and technologies for information retrieving applications, Scientists' notes of Kazan. univ. 2/2007, pp. 49-72 (in Russian).
- [3] Garol'd E., Mins S.: XML, Spravochnik, Simvol-Plyus, 2002 (in Russian).
- [4] Khabibullin I.S.H.: Samouchitel' XML, BKHV, Peterburg 2003 (in Russian).
- [5] Kholzner S.: XML. Entsiklopediya, Piter, 2004 (in Russian).
- [6] Lande D.V., Snarskiy A.A., Bezsydnov I.V.: Internetics. Navigation in the complex networks: models and algorithms, Librikom, Moscow 2009 (in Russian).
- [7] Lande D.V.: Knowledge retrieving at the Internet. Professional work, Williams, Moscow 2005 (in Russian).
- [8] Lande D.V.: The base of information flows integration, Ingeniring, Kyiv 2006 (in Russian).
- [9] Mykhailiuk A.Y., Pylypchuk O.V., Snizhko M.V., Tarasenko V.P.: Quasi-semantic search of textual data in an electronic information source, Radioelectronics and Informatics, KhNURE, Kharkov 3/2009, pp. 61-67 (in Ukrainian).
- [10] Rey E.: Izuchayem XML, SimvolPlyus, 2001 (in Russian).
- [11] Sheperd D.: Osvoy samostoyatel'no XML za 21 den', Izdatel'skiy dom «Vil'yams», 2002 (in Russian).
- [12] Skorohodko E.F.: Semantic networks and automatic text processing, Naukova Dumka, Kyiv 1983 (in Russian).
- [13] Spenser P.: XML. Proyektirovaniye i realizatsiya. Programirovaniye s pomoshch'yu XML, ASP i IE5. Seriya: Programmist programmistu M. Lori 2001 (in Russian).
- [14] Syed Z.S., Finin T., Joshi A.: Wikipedia as an Ontology for Describing Documents, In Proceedings of ICWSM, AAAI Press, 2008, pp. 136-144.

Ph.D. Anton Mykhailiuk
e-mail: may-62@ukr.net



Senior research fellow, associate professor of the Department of Informatics in Borys Grinchenko Kyiv University.
Research interests: mining of natural language text information objects, semantization of data-searching in electronic information resources, and computer-formal education.

Prof. Vasyl Teslyuk
e-mail: vtlesliuk(at)polynet.lviv.ua



Professor of CAD Department in Lviv Polytechnic National University.
Research interests: Computer-aided design and modeling of microelectromechanical systems and integrated circuits.

otrzymano/received: 13.12.2013

przyjęto do druku/accepted: 14.01.2014