

# QoS Equalization in a W-CDMA Cell Supporting Calls of Infinite or Finite Sources with Interference Cancellation

Ioannis D. Moscholios<sup>1</sup>, Georgios A. Kallos<sup>2</sup>, Maria A. Katsiva<sup>1</sup>, Vassilios G. Vassilakis<sup>3</sup>, and Michael D. Logothetis<sup>4</sup>

<sup>1</sup> Department of Informatics and Telecommunications, University of Peloponnese, Tripolis, Greece

<sup>2</sup> BT Technology, Service and Operations, Ipswich, U.K.

<sup>3</sup> Department of Electronic Engineering, University of Surrey, Guildford, U.K.

<sup>4</sup> Department of Electrical and Computer Engineering, University of Patras, Patras, Greece

**Abstract**—In this paper, a multirate loss model for the calculation of time and call congestion probabilities in a Wideband Code Division Multiple Access (W-CDMA) cell is considered. It utilizes the Bandwidth Reservation (BR) policy and supports calls generated by an infinite or finite number of users. The BR policy achieves QoS equalization by equalizing congestion probabilities among calls of different service-classes. In the proposed models a multiple access interference is considered, and the notion of local blocking, user's activity and interference cancellation. Although the analysis of the proposed models reveals that the steady state probabilities do not have a product form solution, the authors show that the calculation of time and call congestion probabilities can be based on approximate but recursive formulas, whose accuracy is verified through simulation and found to be quite satisfactory.

**Keywords**—bandwidth reservation, infinite/finite sources, recursive formula, time-call congestion probabilities, W-CDMA.

## 1. Introduction

Wideband Code Division Multiple Access (W-CDMA) networks support calls from different service-classes with heterogeneous Quality of Service (QoS) requirements. The existence of own-cell and other-cell interference in these networks, increases the complexity of the call-level analysis both in the uplink (UL) and downlink directions.

We study the UL direction of a W-CDMA cell that has fixed capacity and supports  $K$  service-classes whose calls are generated by an infinite and finite number of sources. In the first case, the call arrival process is the Poisson process while in the second case the call arrival process is a quasi-random process [1]. Calls of service-class  $k$  ( $k = 1, \dots, K$ ) have a fixed bandwidth requirement and an exponentially distributed service time. According to the CDMA principle of W-CDMA networks a call is noise for all in-service calls. Therefore, a new call is accepted in the cell if its bandwidth requirement is available and the noise of all in-service calls remains below a tolerable level.

To take into account the interference increase caused by the acceptance of the new call, the notion of Local Blocking (LB) was adopted in analysis. The latter means that a new call can be blocked in any system state, if its acceptance

results in the increase of noise of all in-service calls above a threshold.

We model a reference W-CDMA cell as a multirate teletraffic loss system, and aim at calculating Time and Call Congestion Probabilities (TC and CC probabilities, respectively) via recursive formulas [2]–[4]. In [2]–[4], the calculation of congestion probabilities is based on the classical Kaufman-Roberts formula used in the Erlang Multirate Loss Model (EMLM). The Kaufman-Roberts formula determines, in an efficient way, the link occupancy distribution for a single link that accommodates, under the Complete Sharing (CS) policy, Poisson calls of  $K$  service-classes with different bandwidth requirements and generally distributed service time [5], [6]. In [2], an extension of the EMLM is proposed, based on the Delbrouck's model (where a Bernoulli/Poisson/Pascal call arrival process is considered) [7]. This model allows new calls to have different peakedness factors. In [3], new calls are generated by an infinite number of sources, i.e., calls follow a Poisson process. In [4], calls come from a finite number of sources, a rather realistic case since cells have limited coverage area. As far as the LB modeling is concerned, two approaches exist in the literature. The first ensures reversibility in the underlying Markov state transition diagram but is complex [2]. We adopt the second approach, proposed in [3], since it is simpler and more realistic for W-CDMA systems. The interested reader may resort to [4] for a comparison of these approaches.

In this paper, a research from [3] and [4] is extended by applying the Bandwidth Reservation (BR) policy to guarantee call-level QoS for each service-class. In particular, an equalization of TC or CC probabilities is achieved among different service-classes by reserving bandwidth in favor of service-classes whose calls have high bandwidth requirements. Applications of the BR policy in wired (e.g., [8]–[13]), wireless (e.g., [14]–[17]) and optical networks (e.g., [18],[19]) show the importance of the policy in teletraffic engineering. In addition, the authors study the effect of Interference Cancellation (IC) on congestion probabilities and provide recursive formulas for their calculation. Note that IC receivers reduce own-cell interference and thus decrease congestion [4].

This paper is organized as follows. In Section 2, the basic formulas in the UL of a W-CDMA cell are reviewed. In Section 3, random (Poisson) arrivals are considered and recursive formulas for the calculation of TC and CC probabilities under the BR policy are proposed. In Section 4, the case of quasi-random arrivals is considered. In Section 5, numerical results are presented and evaluated by simulation. The paper is concluded in Section 6.

## 2. Basic Formulas in the UL of a W-CDMA Cell

Consider the UL direction of a W-CDMA reference cell which is controlled by a Base Station (BS) and surrounded by other cells. This cell is modeled as a multirate loss system that supports  $K$  different service-classes. A service-class  $k$  ( $k = 1, \dots, K$ ) call, when accepted in the system, alternates between transmission (active) and non-transmission (passive) periods. The ratio of “active” over “active + passive” periods is the activity factor of a service-class  $k$  call,  $v_k$ .

In the W-CDMA cell, a user “sees” the signals generated by other users as interference. Thus, the BS’s capacity is limited by the own-cell interference,  $P_{\text{own}}$ , caused by the users of the reference cell and the other-cell interference,  $P_{\text{other}}$ , caused by the interference power received from users of the neighboring cells. Due to the stochastic nature of interference, we consider the interference limited capacity of the radio interface. Thermal noise is also considered,  $P_{\text{noise}}$ , which corresponds to the interference of an empty W-CDMA system. The values of  $P_{\text{own}}$  are reduced by the application of IC, whose efficiency,  $\beta$ , can be determined by [20]:

$$\beta = \frac{P_{\text{own}}^{\text{No IC}} - P_{\text{own}}}{P_{\text{own}}^{\text{No IC}}} \Rightarrow P_{\text{own}} = P_{\text{own}}^{\text{No IC}}(1 - \beta), \quad (1)$$

where  $P_{\text{own}}^{\text{No IC}}$  is the own-cell interference without IC.

Let  $P_k$  be the total received power from a service-class  $k$  user. Then, the power control equation is [20]:

$$(E_b/N_0)_k = \frac{G_k P_k}{(P_{\text{own}} - P_k)(1 - \beta) + P_{\text{other}} + P_{\text{noise}}}, \quad (2)$$

where  $(E_b/N_0)_k$  is the signal energy per bit divided by the noise spectral density,  $G_k = W/v_k R_k$  is the processing gain of service-class  $k$  in the UL with data rate  $R_k$  and  $W$  the chip rate of 3840 kcps. Based on Eq. (2), the values of  $P_k$  are given by:

$$P_k = (P_{\text{own}}(1 - \beta) + P_{\text{other}} + P_{\text{noise}}) / (1 - \beta + G_k / (E_b/N_0)_k). \quad (3)$$

Assuming that  $P_{\text{own}} = P_k N_k$ , where  $N_k$  is the maximum number of service-class  $k$  calls in the cell, we have [4]:

$$P_{\text{own}} = \frac{N_k (P_{\text{other}} + P_{\text{noise}})}{1 - \beta - N_k(1 - \beta) + G_k / (E_b/N_0)_k}. \quad (4)$$

Consider now the Noise Rise (NR), defined as [21]:

$$NR = P_{\text{total}} / P_{\text{noise}} = (P_{\text{own}} + P_{\text{other}} + P_{\text{noise}}) / P_{\text{noise}}, \quad (5)$$

where  $P_{\text{total}} = P_{\text{own}} + P_{\text{other}} + P_{\text{noise}}$  is the total received power at the BS.

The relation between the NR and the total UL cell load,  $\eta_{UL}$ , is given by [22]:

$$NR = 1 / (1 - \eta_{UL}), \quad \eta_{UL} = (P_{\text{own}} + P_{\text{other}}) / P_{\text{total}}. \quad (6)$$

Based on Eqs. (4)–(6) it is proved that [4]:

$$N_k = [(1 - \beta) + G_k / (E_b/N_0)_k] \frac{[\eta_{UL}(\delta + 1) - \delta]}{[1 - \beta(\eta_{UL}(\delta + 1) - \delta)]}, \quad (7)$$

$$\delta \equiv P_{\text{other}} / P_{\text{noise}}.$$

Based on Eq. (7), the spread data rate  $R_{s,k}$  of service-class  $k$ , as a proportion of  $W$  is determined:

$$R_{s,k} = W / N_k. \quad (8)$$

Now, we transform  $W$  and  $R_{s,k}$  to the capacity  $C$  and the bandwidth  $b_k$ , of each service-class  $k$ , respectively. This is achieved by considering a basic bandwidth unit ( $bbu$ ) as the greatest common divisor of the bandwidth of all service-classes, or as an arbitrarily chosen small value. So,  $C = \lceil W / bbu \rceil$  and  $b_k = \lceil R_{s,k} / bbu \rceil$  channels.

## 3. Congestion Probabilities Under the BR Policy – the Case of Random Arrivals

Consider a new service-class  $k$  call that arrives in the cell according to a Poisson process with mean arrival rate  $\lambda_k$  and requires  $b_k$  channels in order to be accepted in the system. Let  $j$  be the number of occupied cell’s channels at the time of arrival,  $j = 0, 1, \dots, C$ . Also, let  $t_k$  be the BR parameter that expresses the reserved channels to benefit calls of all service-classes other than service-class  $k$ . Due to the BR policy, the service-class  $k$  call is not allowed to enter the states  $j = C - t_k + 1, \dots, C$ . These states form the so-called reservation space of service-class  $k$ . So, after the acceptance of the call,  $j \leq C - t_k$ , i.e., the available capacity upon the call arrival is  $C - t_k - j$ . Now two types of blocking states  $j$  are considered: hard blocking states due to bandwidth unavailability and soft (local) blocking states with a probability  $0 < L_{j,k} < 1$  (LB states) due to the other-cell interference. The latter is approximated by an independent, lognormally distributed random variable, with parameters  $\mu$  and  $\sigma$  [4]:

$$\mu = \frac{P_{\text{other}} + P_{\text{noise}}}{P_{\text{own}} + P_{\text{other}} + P_{\text{noise}}} C \Rightarrow \mu = \frac{i + i/\delta}{1 + i + i/\delta} C, \quad \sigma = \mu, \quad (9)$$

where  $i = P_{\text{other}} / P_{\text{own}}$ .

The LB probability (LBP) in state  $j$ ,  $L_j$ , is the probability that the other-cell interference is greater than the available cell’s capacity ( $C - t_k - j$ ) [4]:

$$L_j = 1 - P(j' < C - t_k - j) = 1 - CDF(C - t_k - j), \quad (10)$$

where  $j'$  refers to the occupied channels due to the other cell interference and  $CDF(x)$  is the cumulative distribution function of the lognormal distribution.

The values of  $CDF(x)$  are given by:

$$CDF(x) = \frac{1}{2} \left( 1 + \operatorname{erf} \left( \frac{\ln(x) - M}{S\sqrt{2}} \right) \right), \quad (11)$$

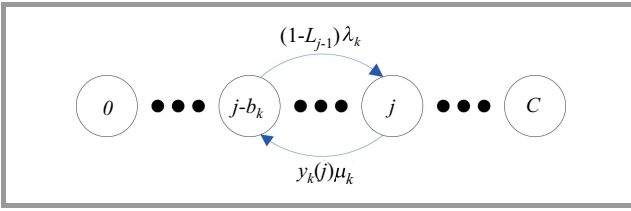
where  $\operatorname{erf}$  is the error function, while  $M$  and  $S$  refer to the parameters of the normal distribution:

$$M = \ln \left( \mu^2 / \sqrt{\mu^2 + \sigma^2} \right), \quad S = \sqrt{\ln(1 + (\sigma^2/\mu^2))}. \quad (12)$$

The service-class  $k$  call is accepted in the cell if all  $b_k$  channels are assigned to the call simultaneously. Thus, it is assumed that  $P_{\text{other}}$  and LBP do not alter during this allocation process. We express the passage factor  $1 - L_{j,b_k}$ , i.e., the probability that the call is not blocked due to the other-cell interference as a function of  $j$  and  $b_k$ :

$$1 - L_{j,b_k} = 1 - L_{j+b_k+1} = CDF(C - t_k - j - b_k + 1). \quad (13)$$

Thus, the transition rate from  $(j - b_k)$  to  $(j)$  equals  $(1 - L_{j-b_k,b_k}) \lambda_k = (1 - L_{j-1}) \lambda_k$ . Figure 1 presents an excerpt of the system's state transition diagram, which is depicted by a one-dimensional Markov chain. Note that  $\mu_k$  is the mean service rate of service-class  $k$  calls, while  $y_k(j)$  is the average number of service-class  $k$  calls in state  $j$ .



**Fig. 1.** State transition diagram for Poisson arriving service-class  $k$  calls with LB between states  $j - b_k$  and  $j$ .

To calculate the un-normalized values of the system state probabilities,  $q(j)$ , the following approximate but recursive formula is proposed:

$$q_{\text{inf}}(j) = \begin{cases} 1, & \text{for } j = 0 \\ \frac{1}{j} \sum_{k=1}^K a_k D_k(j - b_k) q_{\text{inf}}(j - b_k) (1 - L_{j-b_k,b_k}), & \text{for } j = 1, \dots, C \\ 0, & \text{otherwise} \end{cases}, \quad (14)$$

$$D_k(j - b_k) = \begin{cases} b_k & \text{for } j \leq C - t_k \\ 0 & \text{for } j > C - t_k \end{cases}, \quad (15)$$

where:  $\alpha_k = \lambda_k / \mu_k$  is the offered traffic-load of service-class  $k$  calls (in erl),  $t_k$  is the BR parameter, while the values of  $(1 - L_{j-b_k,b_k})$  are determined by:

$$(1 - L_{j-b_k,b_k}) = 1 - L_{j-1} = CDF(C - t_k - j + 1). \quad (16)$$

Note that Eq. (15) facilitates the introduction of the BR policy in the model. The underlying assumption of Eq. (15)

is that the population of service  $k$  calls, which require  $b_k$  channels while  $t_k > 0$ , is negligible inside the reservation space of service-class  $k$ , i.e., when  $j = C - t_k + 1, \dots, C$ . In the case of the CS policy, Eq. (14) takes the form [3], [4]:

$$q_{\text{inf}}(j) = \begin{cases} 1, & \text{for } j = 0 \\ \frac{1}{j} \sum_{k=1}^K a_k b_k q_{\text{inf}}(j - b_k) (1 - L_{j-b_k,b_k}), & \text{for } j = 1, \dots, C \\ 0, & \text{otherwise} \end{cases}. \quad (17)$$

If we do not consider the existence of LB, then the classical Roberts' formula for the EMLM under the BR policy arises [8]:

$$q_{\text{inf}}(j) = \begin{cases} 1, & \text{for } j = 0 \\ \frac{1}{j} \sum_{k=1}^K a_k D_k(j - b_k) q_{\text{inf}}(j - b_k), & \text{for } j = 1, \dots, C \\ 0, & \text{otherwise} \end{cases}, \quad (18)$$

where the values of  $D_k(j - b_k)$  are given by Eq. (15).

Having determined  $q_{\text{inf}}(j)$ 's according to Eq. (14), TC probabilities of service-class  $k$ ,  $P_{b_k}$ , can be calculated as follows:

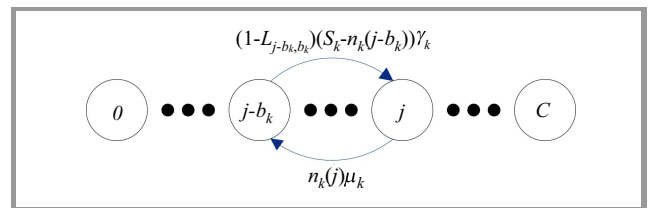
$$P_{b_k} = \sum_{j=0}^C G^{-1} L_{j,j+b_k} q_{\text{inf}}(j), \quad (19)$$

where  $G = \sum_{j=0}^C q_{\text{inf}}(j)$  is the normalization constant and the values of  $L_{j,j+b_k} = 1 - CDF(C - t_k - j - b_k + 1)$ .

Note that TC probabilities refer to the proportion of time the system is congested, while CC probabilities refer to the proportion of arriving calls that find the system congested. TC and CC probabilities coincide in the case of Poisson arrivals due to the PASTA property [1].

#### 4. Congestion Probabilities Under the BR Policy – the Case of Quasi-Random Arrivals

In the case of quasi-random arrivals, this part follows again the analysis of Section 3 up to Eq. (13). At this point, the transition rate from  $(j - b_k)$  to  $(j)$ , becomes:  $(1 - L_{j-b_k,b_k}) (S_k - \bar{n}_k(j - b_k)) \gamma_k = (1 - L_{j-1}) (S_k - \bar{n}_k(j - b_k)) \gamma_k$ , where  $S_k$  is the finite number of service-class  $k$  traffic sources,  $\gamma_k$  is the arrival rate from an idle source of service-class  $k$  and  $\bar{n}_k(j)$  is the average number of service-class  $k$



**Fig. 2.** State transition diagram for quasi-random arriving service-class  $k$  calls with LB between states  $j - b_k$  and  $j$ .

calls in state  $j$ . Figure 2 shows the corresponding one-dimensional Markov chain.

To determine the un-normalized values of  $q(j)$ 's we propose the following recursive formula, for  $j = 1, \dots, C$ :

$$q(j) = \frac{1}{j} \sum_{k=1}^K (S_k - n_k(j) + 1) a_{k,\text{fin}} D_k(j - b_k) q(j - b_k) (1 - L_{j-b_k, b_k}), \quad (20)$$

where:  $q(0)=1$ ,  $q(x)=0$  for  $x < 0$ ,  $a_{k,\text{fin}} = \gamma_k / \mu_k$  is the offered traffic-load per idle source of service-class  $k$  (in erl),  $\bar{n}_k(j - b_k) = n_k(j) - 1$ ,  $n_k(j)$  refers to the number of in-service calls of service-class  $k$  in state  $j$ , while the values of  $D_k(j - b_k)$  and  $(1 - L_{j-b_k, b_k})$  are given by Eqs. (15) and (16), respectively.

In the case of the CS policy, Eq. (20) takes the form [4]:

$$q(j) = \frac{1}{j} \sum_{k=1}^K (S_k - n_k(j) + 1) a_{k,\text{fin}} b_k q(j - b_k) (1 - L_{j-b_k, b_k}), \quad (21)$$

Note that if  $S_k \rightarrow \infty$  for  $k = 1, \dots, K$ , and the total offered traffic-load remains constant, then the call arrival process is Poisson. In that case, Eqs. (20) and (21) become Eqs. (14) and (17), respectively.

The determination of  $q(j)$ 's in Eqs. (20) or (21) requires the values of  $n_k(j)$  in each state  $j$ . These values are unknown and difficult to be determined. In other finite multirate loss models (e.g., [23]–[26]) there exist methods for the determination of  $n_k(j)$  through an equivalent stochastic system, with the same traffic description parameters and exactly the same set of states. However, the state space determination of the equivalent system is complex, especially for large capacity systems that serve many service-classes. Thus,  $n_k(j)$  is approximated, as the mean number of service-class  $k$  calls in state  $j$ ,  $y_k(j)$ , when Poisson arrivals are considered, i.e.,  $n_k(j) \approx y_k(j)$  and consequently  $n_k(j) - 1 \approx y_k(j - b_k)$ . Such approximations induce little error (e.g., [27]–[33]).

Based on the abovementioned approximation, Eqs. (20) and (21) take the form of (22) and (23), respectively:

$$q(j) = \frac{1}{j} \sum_{k=1}^K (S_k - y_k(j - b_k)) a_{k,\text{fin}} D_k(j - b_k) q(j - b_k) (1 - L_{j-b_k, b_k}), \quad (22)$$

$$q(j) = \frac{1}{j} \sum_{k=1}^K (S_k - y_k(j - b_k)) a_{k,\text{fin}} b_k q(j - b_k) (1 - L_{j-b_k, b_k}), \quad (23)$$

where the values of  $y_k(j)$ , for Poisson arrivals, are given by:

$$y_k(j) = a_k (1 - L_{j-b_k, b_k}) q_{\text{inf}}(j - b_k) / q_{\text{inf}}(j). \quad (24)$$

Having determined LBP by Eq. (16) and  $q(j)$ 's by Eq. (22) TC probabilities of service-class  $k$  calls is calculated,  $P_{b_k}$ , based on Eq. (19). Equation (19) can also be used for the determination of CC probabilities of service-class  $k$ , but  $q(j)$ 's should be calculated by Eq. (22) assuming  $S_k - 1$  traffic sources.

## 5. Numerical Examples – Evaluation

The authors compare the analytical and simulation TC probabilities results obtained by the proposed models for different values of the IC efficiency  $\beta$ . For further comparison, the corresponding analytical results obtained in the case of the CS policy, for both Poisson and quasi-random arrivals [4] are also shown. Simulations are based on the SIMSCRIPT III language [34] and are mean values of 7 runs.

Consider a W-CDMA reference cell that accommodates quasi-random arriving calls of  $K=3$  different service-classes. Accepted calls remain in the system for an exponentially distributed service time with mean value  $\mu_1^{-1} = \mu_2^{-1} = \mu_3^{-1} = 1$ . Table 1 presents the traffic characteristics of all service-classes. In addition, the following assumptions were made:  $\eta_{UL} = 0.75$ ,  $i = 0.35$ ,  $\delta = 2$ ,  $bbu = 13.5$  kcps, while the IC efficiency  $\beta$  takes the values 0.0 and 0.8. When  $\beta = 0$ , the bandwidth requirements and the corresponding BR parameters of all service-classes are:  $b_1 = 4$ ,  $b_2 = 7$ ,  $b_3 = 64$  and  $t_1 = 60$ ,  $t_2 = 57$ ,  $t_3 = 0$ . The values of the BR parameters are chosen according to the rule:  $b_1 + t_1 = b_2 + t_2 = b_3$ , to achieve equalization of congestion probabilities. Similarly, when  $\beta = 0.8$  then  $b_1 = 4$ ,  $b_2 = 5$ ,  $b_3 = 54$  and  $t_1 = 50$ ,  $t_2 = 49$ ,  $t_3 = 0$ .

Table 1  
Traffic parameters of all service-classes

Serv.-class $k$	$R_k$ [kb/s]	$v_k$	$(\frac{E_b}{N_0})_k$ [dB]	$(\frac{E_b}{N_0})_k$	$S_k$	$a_{k,\text{fin}}$ [erl]	$a_k$ [erl]
1	7.95	0.67	4.0	2.51	20	0.15	3.0
2	12.20	0.67	4.0	2.51	10	0.20	2.0
3	144.00	1.00	2.0	1.58	5	0.01	0.05

In the  $x$ -axis of Figs. 3–8 the offered traffic load of the 1<sup>st</sup>, 2<sup>nd</sup> and 3<sup>rd</sup> service-class increase in steps of 0.05, 0.10 and 0.002 erl, respectively. So, point 1 refers to:  $(a_{1,\text{fin}}, a_{2,\text{fin}}, a_{3,\text{fin}}) = (0.15, 0.20, 0.01)$  while point 6 to:  $(a_{1,\text{fin}}, a_{2,\text{fin}}, a_{3,\text{fin}}) = (0.40, 0.70, 0.02)$ . Figures 3–4 present the analytical and simulation results of the 1<sup>st</sup> service-class for  $\beta = 0$  and 0.8, respectively. Similarly, in Figs. 5–6 and 7–8, the corresponding results of the 2<sup>nd</sup> and 3<sup>rd</sup> service-class are presented, respectively. The proposed formulas for the calculation of the occupancy distribution and consequently TC probabilities in the case of the BR policy give quite accurate results in comparison with the simulation results. The increase of  $\beta$  results in the TC probabilities decrease, since the IC reduces the own-cell interference. The TC probabilities obtained by considering the CS policy fail to approximate the corresponding TC probabilities in the case of the BR policy. The application of the BR policy results in a slight decrease of the TC probabilities of the 3<sup>rd</sup> service-class compared to the increase of the TC probabilities of the other two service-classes. This is expected since the bandwidth per call requirement of the 3<sup>rd</sup> service-class is much higher (64 b.u.) than the requirements of the other service-classes (7 and 4 b.u.).

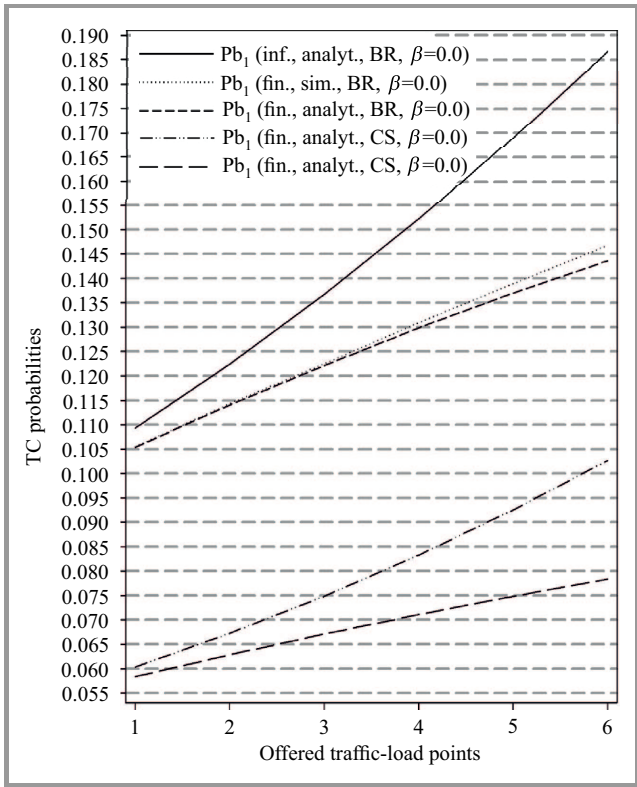


Fig. 3. TC probabilities – 1<sup>st</sup> service-class ( $\beta = 0$ ).

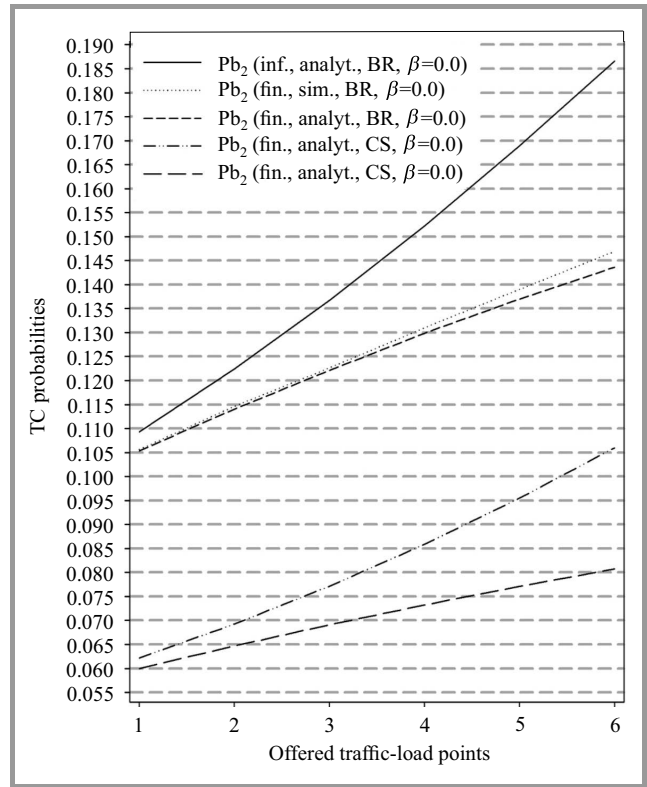


Fig. 5. TC probabilities – 2<sup>nd</sup> service-class ( $\beta = 0$ ).

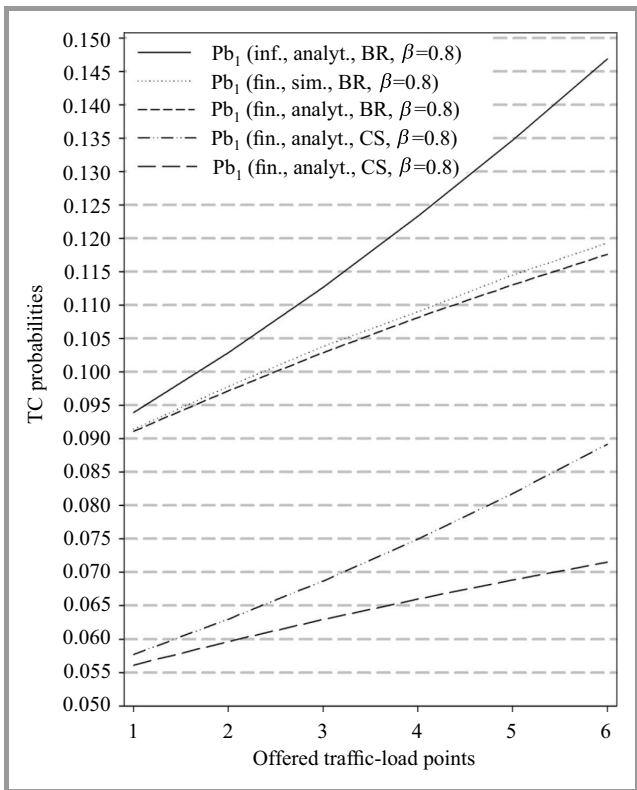


Fig. 4. TC probabilities – 1<sup>st</sup> service-class ( $\beta = 0.8$ ).

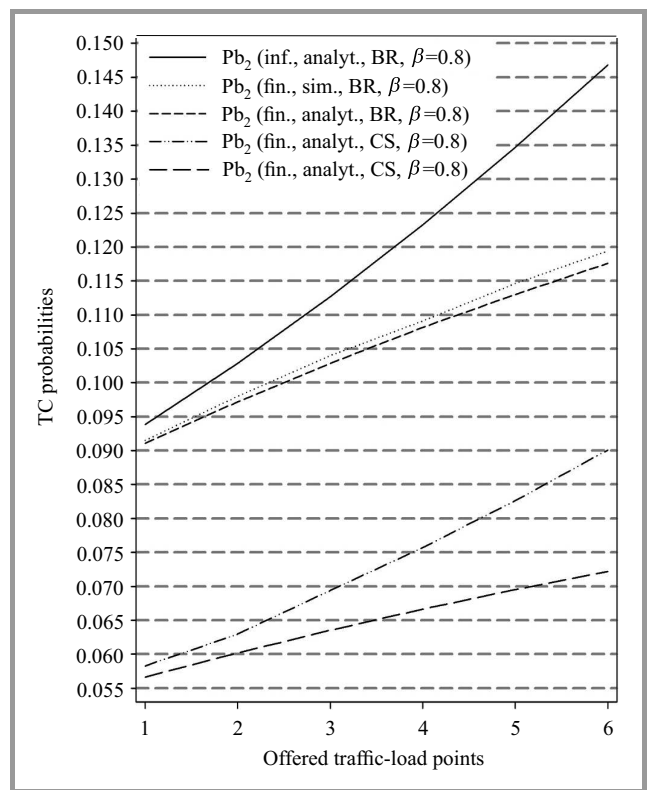


Fig. 6. TC probabilities – 2<sup>nd</sup> service-class ( $\beta = 0.8$ ).

## 6. Conclusion

In this paper authors propose multirate loss models for the call-level analysis of a W-CDMA reference cell that supports calls from different service-classes with different bandwidth requirements. New call arrivals follow a Poisson arrival process, or a quasi-random arrival process. The proposed models take into account important peculiarities of wireless networks, such as multiple access interference, the notion of local blocking, user's activity, interference cancellation and the BR policy. The latter is used to achieve equalization of congestion probabilities among calls of different service-classes. Due to the existence of local blocking and the BR policy in the proposed models, the calculation of the occupancy distribution (and consequently of time and call congestion probabilities) is based on an approximate but recursive formula. Simulation results verify the proposed model accuracy.

## References

- [1] H. Akimaru and K. Kawashima, *Teletraffic – Theory and Applications*. 2nd ed. Berlin: Springer, 1999.
- [2] V. Iversen, "Evaluation of multi-service CDMA networks with soft blocking", in *Proc. 3rd ruSMART 2010 and 10th NEW2AN 2010*, St. Petersburg, Russia, 2010.
- [3] L. Popova and W. Koch, "Analytical performance evaluation of mixed services with variable data rates for the uplink of UMTS", in *Proc. 3rd Int. Symp. Wirel. Commun. Syst. ISWCS'06*, Valencia, Spain, 2006, pp. 297–301.
- [4] I. Moscholios, G. Kallos, V. Vassilakis, M. Logothetis, and M. Koukias, "Congestion probabilities in W-CDMA networks supporting calls of finite sources", in *Proc. 7th Int. Working Conf. HETNETs 2013*, Ilkley, UK, 2013.
- [5] J. Kaufman, "Blocking in a shared resource environment", *IEEE Trans. Commun.*, vol. 29, no. 10, pp. 1474–1481, 1981.
- [6] J. Roberts, "A service system with heterogeneous user requirements", in *Performance of Data Communications Systems and their Applications*, G. Pujolle, Ed. Amsterdam: North Holland, 1981, pp. 423–431.
- [7] L. Delbrouck, "On the steady state distribution in a service facility with different peakedness factors and capacity requirements", *IEEE Trans. Commun.*, vol. 31, no. 11, pp. 1209–1211, 1983.
- [8] J. Roberts, "Teletraffic models for the Telecom 1 Integrated Services Network", in *Proc. Int. Teletraffic. Congr. ITC-10*, Montreal, Canada, 1983.
- [9] M. Stasiak and M. Głabowski, "A simple approximation of the link model with reservation by a one-dimensional Markov chain", *Perform. Eval.*, vol. 41, no. 2–3, pp. 195–208, 2000.
- [10] I. Moscholios and M. Logothetis, "Engset multirate state-dependent loss models with QoS guarantee", *Int. J. Commun. Syst.*, vol. 19, no. 1, pp. 67–93, 2006.
- [11] M. Głabowski, A. Kaliszan, and M. Stasiak, "Asymmetric convolution algorithm for blocking probability calculation in full-availability group with bandwidth reservation", *IET Circ., Devic. & Syst.*, vol. 2, no. 1, pp. 87–94, 2008.
- [12] I. Moscholios and M. Logothetis, "The Erlang multirate loss model with Batched Poisson arrival processes under the bandwidth reservation policy", *Comp. Commun.*, vol. 33, supplement 1, pp. S167–S179, 2010.
- [13] I. Moscholios, J. Vardakas, M. Logothetis, and A. Boucouvalas, "QoS guarantee in a batched poisson multirate loss model supporting elastic and adaptive traffic", in *Proc. IEEE Int. Conf. Commun. ICC 2012*, Ottawa, Canada, 2012.

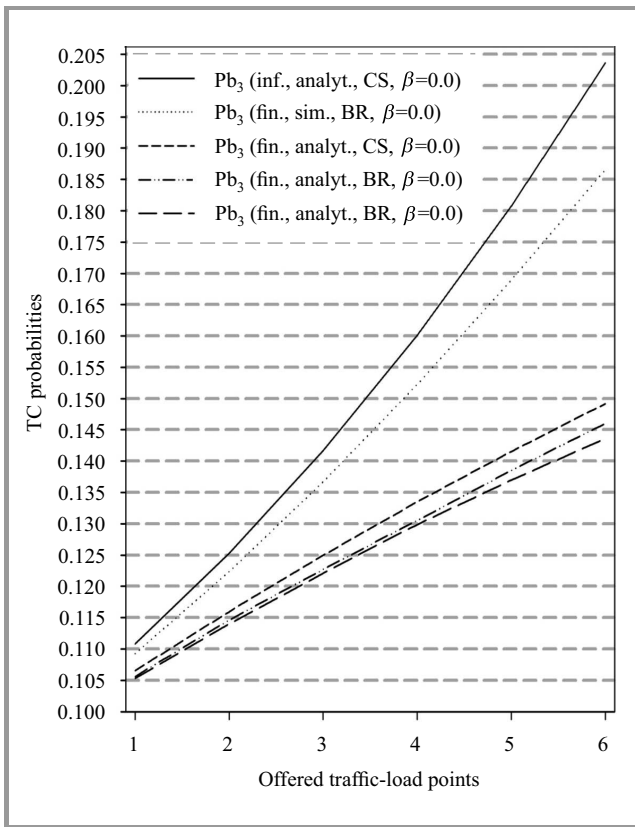


Fig. 7. TC probabilities – 3<sup>rd</sup> service-class ( $\beta = 0$ ).

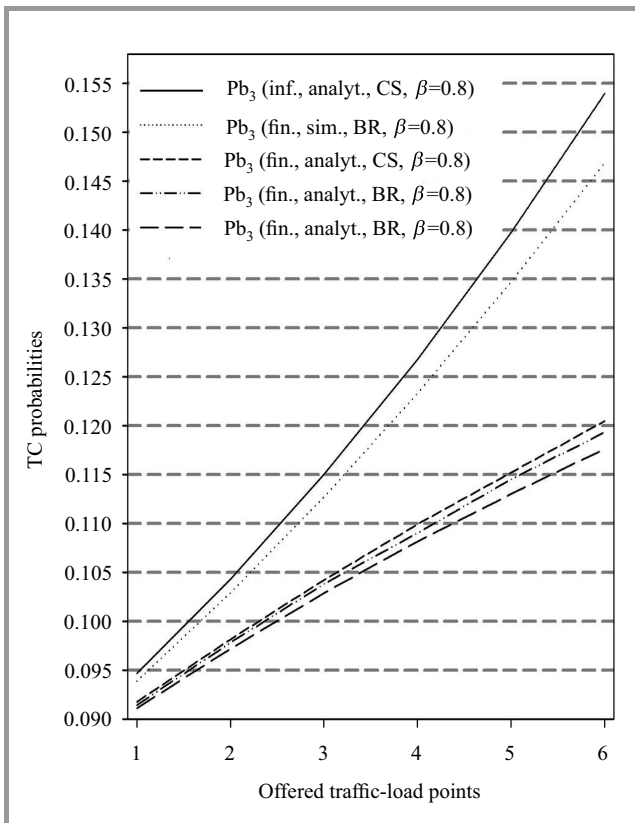


Fig. 8. TC probabilities – 3<sup>rd</sup> service-class ( $\beta = 0.8$ ).

- [14] C. Oliveira, J. Kim, and T. Suda, "An adaptive bandwidth reservation scheme for high-speed multimedia wireless networks", *IEEE J. Select. Areas Commun.*, vol. 16, no. 6, pp. 858–874, 1998.
- [15] I. Moscholios, M. Logothetis, and M. Koukias, "A state-dependent multi-rate loss model of finite sources with QoS guarantee for wireless networks", *Mediterran. Jo. Comp. Netw.*, vol. 2, no. 1, pp. 10–20, 2006.
- [16] G. Raskutti, A. Zalesky, E. W. M Wong and M. Zukerman, "Enhanced blocking probability evaluation method for circuit-switched trunk reservation networks", *IEEE Commun. Lett.*, vol. 11, no. 6, pp. 543–545, 2007.
- [17] M. Stasiak, P. Zwierzykowski, and D. Parniewicz, "Modeling of the WCDMA interface in the UMTS network with soft handoff mechanism", in *Proc. IEEE Global Commun. Conf. Globecom 2009*, Honolulu, Hawaii, 2009, pp. 4839–4844.
- [18] K. Kuppuswamy and D. Lee, "An analytic approach to efficiently computing call blocking probabilities for multiclass WDM networks", *IEEE/ACM Trans. Network.*, vol. 17, no. 2, pp. 658–670, 2009.
- [19] J. Vardakas, I. Moscholios, M. Logothetis, and V. Stylianakis, "On code reservation in multi-rate OCDMA passive optical networks", in *Proc. 8th Int. Symp. Commun. Syst. Netw. Digit. Sig. Process. CSNDSP 2012*, Poznań, Poland, 2012, pp. 418–421.
- [20] C. Rosa, T. Sorensen, J. Wigard, and R. Mogensen, "Interference cancellation and 4-branch antenna diversity for W-CDMA uplink packet access", in *Proc. 61st Veh. Technol. Conf. VTC 2005-Spring 2005*, Stockholm, Sweden, 2005, pp. 1758–1762.
- [21] M. Stasiak, M. Głabowski, A. Wiśniewski, and P. Zwierzykowski, *Modeling and Dimensioning of Mobile Networks*. Wiley, 2011.
- [22] *W-CDMA for UMTS – HSPA Evolution and LTE*, 4th ed., H. Holma and A. Toskala, Eds. Wiley, 2007.
- [23] G. Stamatelos and J. Hayes, "Admission control techniques with application to broadband networks", *Comp. Commun.*, vol. 17, no. 9, pp. 663–673, 1994.
- [24] I. Moscholios, M. Logothetis, and P. Nikolaropoulos, "Engset multi-rate state-dependent loss models", *Perform. Eval.*, vol. 59, no. 2–3, pp. 247–277, 2005.
- [25] I. Moscholios, M. Logothetis, and M. Koukias, "An ON-OFF multirate loss model of finite sources", *IEICE Trans. Commun.*, vol. E90-B, no. 7, pp. 1608–1619, 2007.
- [26] I. Moscholios, M. Logothetis, and G. Kokkinakis, "On the calculation of blocking probabilities in the multirate state-dependent loss models for finite sources", *Mediterran. J. Comp. Netw.*, vol. 3, no. 3, pp. 100–109, 2007.
- [27] M. Głabowski and M. Stasiak, "An approximate model of the full-availability group with multi-rate traffic and a finite source population", in *Proc. 12th GI/ITG Conf. Measur., Model. Eval. Comp. Commun. Syst. and 3rd Polish-German Teletraff. Symp. MMB&PGTS 2004*, Dresden, Germany, 2004, pp. 195–204.
- [28] V. Vassilakis, G. Kallos, I. Moscholios, and M. Logothetis, "Call-level analysis of W-CDMA networks supporting elastic services of finite population", in *Proc. IEEE Int. Conf. Commun. ICC 2008*, Beijing, China, 2008.
- [29] M. Głabowski, K. Kubasik, and M. Stasiak, "Modeling of systems with overflow multi-rate traffic and finite number of traffic sources", in *Proc. 6th Int. Symp. Commun. Syst., Netw. Digit. Sig. Process. CNSDSP 2008*, Graz, Austria, 2008, pp. 196–199.
- [30] M. Głabowski, A. Kaliszczan, and M. Stasiak, "Modeling product-form state-dependent systems with BPP traffic", *Perform. Eval.*, vol. 67, no. 3, pp. 174–197, 2010.
- [31] J. Vardakas, I. Moscholios, M. Logothetis, V. Stylianakis, and F. Rock, "Evaluation of Dynamic wavelength allocation scenarios in WDM-TDMA PONs servicing ON-OFF traffic of finite sources", in *Proc. 11th Int. Conf. Telecommun. ConTEL 2011*, Graz, Austria, 2011, pp. 333–340.
- [32] I. Moscholios, J. Vardakas, M. Logothetis, and M. Koukias, "A quasi-random multirate loss model supporting elastic and adaptive traffic", in *Proc. 4th Int. Conf. Emerg. Netw. Intellig.*, Barcelona, Spain, 2012, pp. 56–61.
- [33] I. Moscholios, J. Vardakas, M. Logothetis, and M. Koukias, "A quasi-random multirate loss model supporting elastic and adaptive traffic under the bandwidth reservation policy", *Int. J. Adv. Netw. Serv.*, vol. 6, no. 3–4, pp. 163–174, 2013.
- [34] "Simscrip III" [Online]. Available: <http://www.simscrip.com/> (accessed: July 2014)



**Ioannis D. Moscholios** received the Dipl.-Eng. degree in Electrical and Computer Engineering from the University of Patras, Patras, Greece in 1999, the M.Sc. degree in Spacecraft Technology and Satellite Communications from the University College London, UK, in 2000 and the Ph.D. degree in Electrical and Computer

Engineering from the University of Patras in 2005. From 2005 to 2009 he was a Research Associate at the Wire Communications Laboratory, Dept. of Electrical and Computer Engineering, University of Patras. From 2009 to 2013 he was a Lecturer in the Dept. of Telecommunications Science and Technology, University of Peloponnese, Tripolis, Greece. Currently, he is an Assistant Professor in the Dept. of Informatics and Telecommunications, University of Peloponnese, Tripolis, Greece. His research interests include simulation and performance analysis of communication networks. He has published over 95 papers in international journals and conferences and has over 220 third-party citations. He is a member of the Technical Chamber of Greece (TEE).

E-mail: [idem@uop.gr](mailto:idem@uop.gr)

Department of Informatics and Telecommunications  
University of Peloponnese  
221 00 Tripolis, Greece



**Georgios A. Kallos** received his Dipl.-Eng degree in Electrical and Computer Engineering from the University of Patras, Greece in 2006. In 2010, he received the M.Sc. degree in Wireless Systems from the Royal Institute of Technology (KTH), Stockholm, Sweden and the M.Sc. degree in Information and Communication Technologies

from the Technical University of Catalonia (UPC), Barcelona, Spain. In 2011 he joined British Telecommunications in Adastral Park, Ipswich, United Kingdom as a Research Scientist. He is an associate member of the British Computer Society.

E-mail: [george.kallos@bt.com](mailto:george.kallos@bt.com)

BT Technology, Service and Operations  
IP5 3RE Ipswich, U.K.





**Maria A. Katsiva** graduated from the Noncommissioned officers of Hellenic Air force Technicians School in 2008. She has been working as a technician of avionics and communication systems in the HAF T-6A aircraft in 120 FTW, Kalamata Air Base since 2009, and since 2011 she is a Technical Inspector. She received her

M.Sc. degree in Advanced Telecommunication Systems and Networks from the University of Peloponnese, Tripolis, Greece in 2014. Her research interests are in the areas of performance modeling and analysis of telecommunication networks.

E-mail: mtpx12103@uop.gr  
Department of Informatics and Telecommunications  
University of Peloponnese  
221 00 Tripolis, Greece



**Vassilios G. Vassilakis** received his Ph.D. in Electrical and Computer Engineering from the University of Patras, Greece in 2011. Currently, he is a Research Fellow at the Centre for Communication Systems Research, University of Surrey, U.K. He is involved in EU and industrial R&D projects. His main research interests are in

the areas of performance modeling and analysis of future mobile networks and future Internet technologies. He has

published over 30 papers in international journals and conferences.

E-mail: v.vasilakis@surrey.ac.uk  
Department of Electronic Engineering  
University of Surrey  
GU2 7XH Guildford, U.K.



**Michael D. Logothetis** received his Dipl.-Eng. (1981) and Ph.D. (1990) in Electrical Engineering, both from the University of Patras, Greece. From 1991 to 1992 he was Research Associate in NTT's Telecommunication Networks Laboratories, Tokyo, Japan. He is a Professor in the Department of Electrical and Computer Engineering, University of Patras, Greece. His research interests

include teletraffic theory and engineering, simulation, and performance optimization of communication networks. He has published over 180 papers and has over 550 third-party citations. He is serving on the Technical Program Committee of international conferences, while he organizes and chairs several technical sessions. He is a member of the Steering Committee of CSNDSP. He has become a Guest Editor and participates in the Editorial Board of international journals. He is a member of the IEEE (Senior), IEICE, IARIA (Fellow), FITCE and the Technical Chamber of Greece (TEE).

E-mail: mlogo@upatras.gr  
Department of Electrical and Computer Engineering  
University of Patras  
265 04 Patras, Greece