

Geospatial Assessment of Soil Organic Matter Variability at Sidi Bennour District in Doukkala Plain in Morocco

Abdelkrim Bouasria^{1*}, Khalid Ibno Namr¹, Abdelmejid Rahimi¹, El Mostafa Ettachfini¹

¹ Department of Geology, Faculty of Sciences, Chouaib Doukkali University, BP.20, 24000, El Jadida, Morocco

* Corresponding author's e-mail: bouasria.a@ucd.ac.ma

ABSTRACT

Understanding the spatial variability of soil organic matter (SOM) is critical for studying and assessing soil fertility and quality. This knowledge is important for soil management, which results in high crop yields at a reduced cost of crop production and helps to protect the environment. The benefits of an accurate interpolation of SOM spatial distribution are well known at the agricultural, economic, and ecological levels. It has been conducted this study for comparing and analyze different spatial interpolation methods to evaluate the spatial distribution of SOM in Sidi Bennour District, which is a semi-arid area in the irrigated scheme of the Doukkala Plain, Morocco. For condng this study, it was collected 368 representative soil samples at a depth of 0–30 cm. A portable global positioning system was used to obtain the location coordinates of soil sampling sites. The SOM spatial distribution was performed using four interpolation methods: inverse distance weighted and local polynomial interpolation as deterministic methods, and ordinary kriging and empirical Bayesian kriging as geostatistical methods. High SOM levels were concentrated in vertisols, and low SOM levels were observed in immature soils. The average SOM value was 1.346%, with moderate to high variability ($CV = 35.720\%$). A low SOM concentration indicates a continuous possibility of soil degradation in the future. Ordinary kriging yielded better results than the other interpolation methods ($RMSE = 0.395$) with a semivariogram fitted by an exponential model, followed by inverse distance weighted ($RMSE = 0.397$), empirical Bayesian kriging ($RMSE = 0.400$), and local polynomial interpolation ($RMSE = 0.412$). Soil genetics and the strong influence of human activity are the major sources of SOM spatial dependence, which is moderate to low. Low SOM content levels ($< 1.15\%$) were present in the southwestern and eastern parts of the digital map. This situation calls for the implementation of specific soil recovery measures.

Keywords: soil organic matter, Doukkala Plain, spatial interpolation, geostatistics, soil quality, irrigated perimeter, Morocco

INTRODUCTION

Soil is an invaluable source of food production. Agricultural land is under tremendous pressure from an increasing population, alongside intense climate change (Van Kernebeek et al. 2016). Besides, intensive farming contributes to soil depletion and reduces soil potential for crop production. Soil organic matter (SOM) content plays a prominent role in soil quality and soil fertility improvement (Mrabet et al. 2004; Lehmann and Kleber 2015). SOM has several advantages that can be subdivided into physical, chemical, and biological categories. In addition, SOM plays a crucial role in sequestering carbon in the soil,

thus mitigating the impact of climate change, as it represents the most important carbon reservoir in the terrestrial ecosystem (Johnston et al. 2009). However, the main issue of soil protection, including the continued degradation of SOM in agroecosystems, is unsustainable farming practices and climate conditions (Dahan et al. 2001; Badraoui 2006; Dhaliwal et al. 2019).

Accurate information on SOM spatial variability is a crucial indicator not only of soil quality but also of the carbon stock in the land ecosystem and is a good indicator for the agricultural system, natural resource management, climate modeling and environmental science (Liu et al. 2006; Robinson and Metternicht 2006; Bhunia

et al. 2018). Thus, adequate information on the status behavior of SOM in space and time is required. However, precise spatial measurements of SOM could be expensive, time-consuming and labor-intensive to sample the soil (Bhunia et al. 2018). Therefore, there is often a relatively sparse number of soil samples available in a given region that does not represent a potential real degree of variation. Thus, for better planning and management, accurate SOM interpolation at unsampled sites is required. However, today's spatial data analysis methods and tools allow the monitoring of spatiotemporal changes in almost all soil attributes at various levels (Mabit and Bernard 2010; Dai et al. 2014; Bhunia et al. 2018). There is still not enough exploration in Morocco of procedures that allow the analysis by statistical interpolation methods with the precise prediction of SOM.

In the past, many conventional statistical techniques have been used to measure soil variability. These approaches do not define the spatial allocation of soil attributes in non-sampled locations. Deterministic approaches, which do not consider the spatial autocorrelation of data, are the most widely used methods for SOM spatial analysis. The most widely used methods are inverse distance weighted (IDW), splines and local polynomial interpolation (LPI) (Robinson and Metternicht 2006). In addition, there are stochastic geostatistical methods, such as ordinary kriging (OK), which consider every variable's evaluation at each location (Pang et al. 2011; Marchetti et al. 2012). In recent years, empirical Bayesian kriging (EBK) has become an essential alternative to

traditional kriging techniques for mapping soil properties. It functions differently than conventional approaches; non-sampled locations are automatically calculated and measured in an image representing a particular region using a distribution of semivariogram models rather than a single model such as OK. When kriging parameters are used, their reliability is enhanced by multiple simulated variograms (Yang et al. 2014; Farina et al. 2017; Gribov and Krivoruchko 2020).

Given the significance of the SOM content mentioned above, this study explored four commonly used spatial interpolation methods (LPI, IDW, OK, and EBK) to (1) evaluate and compare the interpolation techniques for SOM spatial prediction, and (2) choose the most appropriate interpolation technique for creating a digital map to detect areas affected by SOM degradation.

METHODS AND MATERIALS

Study area

We have conducted this study in the Sidi Bennour district, which is located in western Morocco in the Doukkala Plain (Fig.1). It covers an irrigated area of 436 km². Soil and climatic conditions are favorable for agricultural production. It is situated in a semi-arid climate. It is slightly temperate in winter and hot and dry in summer (Bouasria et al. 2020). The annual temperature ranges from 12.1°C (min) to 26.3°C (max) with an average is around 19.2 °C. Annual rainfall was

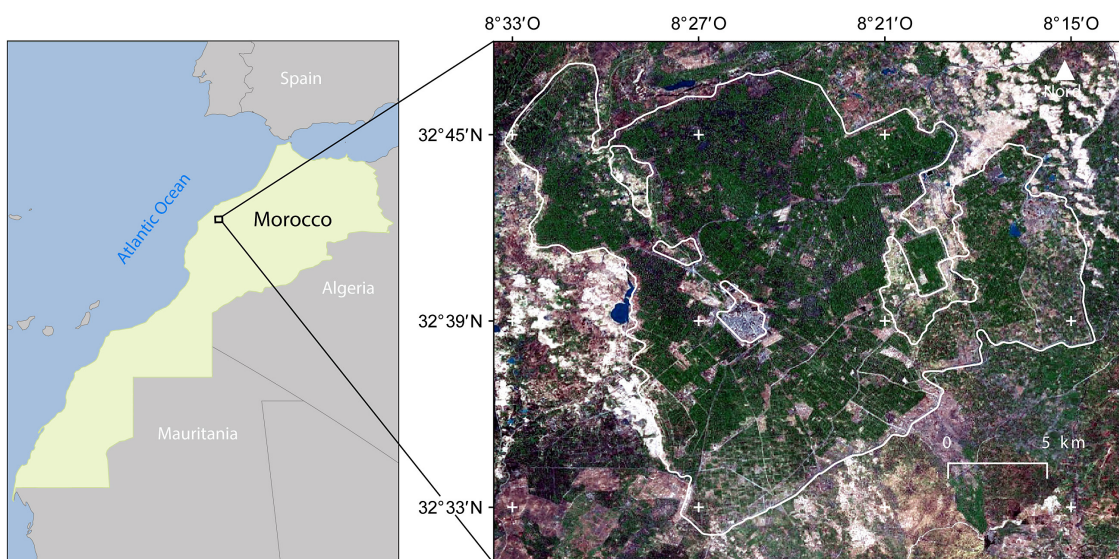


Fig. 1. Study area geographical location

317 mm per year. The irrigated region of Doukala is one of the largest and most densely populated areas in Morocco. This region is remarkable for its scale and strategic significance in national development. It contributes to national production, with 38% for sugar beets and 20% for commercialized milk. The study region's most important crops are wheat, maize, sugar beet, and alfalfa (ORMVAD 2020).

Sampling, SOM laboratory analysis, and pedological information

In this study, we have used a restricted random sampling system. The study area was divided into a 1 km grid. Within each grid segment, a single sampling unit (a single location) was randomly selected. This technique allowed for coverage of the locations throughout the entire study area. We used a GPS to locate the geographical coordinates of the 368 samples (Fig. 2). The samples were collected at a depth of 30 cm in September 2013. They were then dried, crushed and sieved. The Walkley and Black method was then used to analyze the soil organic matter content (Walkley and Black 1934).

To describe the pedological classes in the study area, we used four pedological soil maps at a scale of 1:50,000 (Geoffroy 1978). We georeferenced these maps according to the national coordinate reference system (Merchich / North Maroc, EPSG: 26191). We have then digitized the study area's pedological classes by using the open-source QGIS software package. We then

obtained digital vector maps with 28 series according to the French CPCS 1967 soil classification (CPCS 1967).

Statistical data analysis

The SOM descriptive statistics were determined assuming that the data were spatially independent. To draw the correct interpretation and better understand spatial interpolation, data normality is required, as it may have some consequences for geostatistical data analysis. In this regard, we checked the normality of the SOM dataset using the Kolmogorov-Smirnov test before spatial data analysis (Kerry and Oliver 2007). Therefore, the SOM data were subject to transformations when it did not fit the normal distribution at a suitable significance level ($p < 0.05$) (Webster and Oliver 2008). If, after logarithmic transformation, the dataset failed to achieve normality, then the normalized skewness values, ranging from -0.5 to 0.5, was the criterion to choose another method such as the Box-Cox transformation (Bogunovic et al. 2017).

Interpolation methods

In this study, we used two methods: deterministic and geostatistical. The first approach creates surfaces from the measured points. In contrast, the second method utilizes the measured points' statistical parameters to achieve the spatial interpolation. For deterministic interpolation techniques, we selected two methods: local polynomial

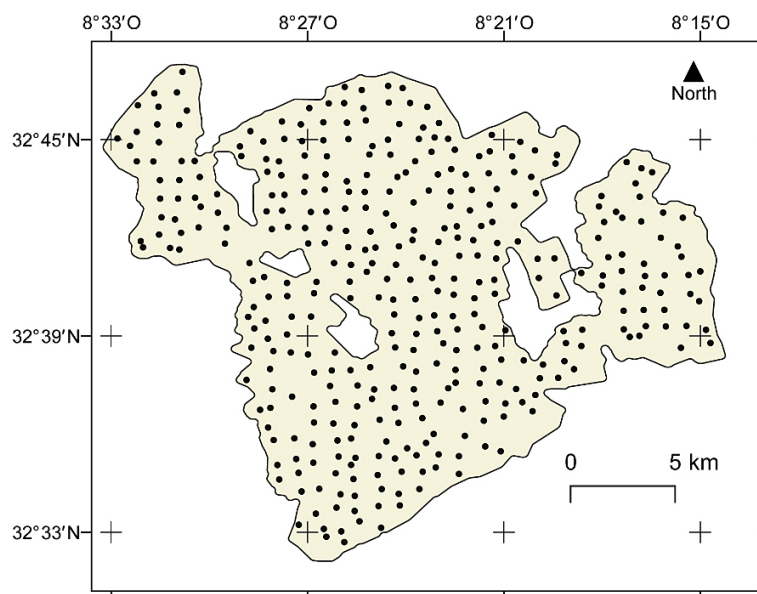


Fig. 2. Distribution of 368 sampling locations in the study area

interpolation (LPI) and inverse distance weighted interpolation (IDW). For geostatistical methods, we used ordinary kriging (OK) as well as empirical Bayesian kriging (EBK). These four methods were used to produce SOM spatial patterns in the study area.

Inverse Distance Weighted method

Inverse distance weighted (IDW) is a deterministic interpolation technique that is the most commonly used method in soil science for spatial interpolation (Bhunja et al. 2018). It is a nonlinear interpolation technique that calculates the prediction of non-sampled locations based on the average known values of adjacent points (Đurđević et al. 2019) (Eq. 1).

$$Z(s_0) = \frac{\sum_{i=1}^N Z(s_i) d_{ij}^{-p}}{\sum_{i=1}^N d_{ij}^{-p}} \quad (1)$$

where: $Z(s_0)$ is the estimated value at a given location s_0 ,

N is the total number of sampling points,
 $Z(s_i)$ is the observed SOM at location s_i
 p is the weight assigned to the distance separating the calculated point from the measured point d_{ij} . The value of p was fixed at two (2) in this study.

Local polynomial interpolation (LPI) method

A local polynomial fits a series of small plans that overlap at sampling points, which further predicts each location in the region using the center of each plan. Local polynomial interpolation produces a map surface by combining the results of numerous polynomial formulas, each optimized for a given neighborhood. The maximum and minimum number of points, the shape of the neighborhood and the area configuration can be defined, and the sampling points of the neighborhood can be weighted according to the distance from the area of the prediction area (Schaum 2008; Xie et al. 2011).

Ordinary kriging method

To estimate the non-sampled position, ordinary kriging (OK) utilizes a weighted average of the calculated neighboring data values, which are reliant on the distance separating these points, as well as their groups and their values. OK estimates the z value of the random function for at least one

non-sampled location. (Goovaerts 1999; Webster and Oliver 2008). Kriging estimates $z^*(s_0)$ and the error estimation variance $\sigma_k^2(s_0)$ at any location s_0 were, respectively, computed as follows:

$$z^*(s_0) = \sum_{i=1}^N \omega_i Z(s_i) \quad (2)$$

$$\sigma_k^2(s_0) = \mu + \sum_{i=1}^N \omega_i \gamma(s_0 - s_i) \quad (3)$$

where: ω_i is the weight attributed to the known value of $Z(s_i)$,

μ is the Lagrange constant,

$\gamma(s_0)$ is the value of the semivariogram corresponding to the interval between s_0 and s_i .

The kriging method uses semivariogram parameters that are adjusted to a given region to express the soil attributes spatial continuity. The semivariogram considers the distance to measure the strength of the statistical correlation (Oliver and Webster 2015). The parameters of the semivariogram are the range, which is the distance where the spatial association disappears, and the sill that corresponds to the highest variability where the spatial dependence disappears. The semivariogram is expressed as follows (Goovaerts 1999; Webster and Oliver 2008):

$$\gamma(h) = \frac{1}{2N(h)} + \sum_{i=1}^{N(h)} [Z(s_i) - Z(s_i + h)]^2 \quad (4)$$

where: $\gamma(h)$ is the semivariogram function,

h is the lag distance separating a pair of locations $N(h)$,

Z is the SOM property parameter,

$Z(s_i)$ is the value of Z at position s_i and

$Z(s_i + h)$ is the value of Z at position $s_i + h$.

To calculate the geostatistical parameters, empirical semivariograms were fitted using theoretical semivariogram models. The calculated geostatistical parameters were nugget (τ^2), partial sill (σ^2), sill ($\tau^2 + \sigma^2$), and range parameter (Φ). These parameters were used to assess the spatial dependency of SOM content (the ratio of nugget

to sill variances, $\tau^2 / (\tau^2 + \sigma^2)$, which is expressed as a percentage). In general, if the ratio is less than 25%, the spatial dependency is strong and if the ratio ranges from 25% to 75%, the spatial dependence is moderate; otherwise, the spatial dependence is weak (Cambardella et al. 1994).

Empirical Bayesian kriging method

Compared to traditional kriging methods, the empirical Bayesian kriging (EBK) approach automatically applies several different semivariogram models instead of a single fitted model for the whole area as OK. It assesses the non-sampled locations by accounting for the error in estimating the underlying semivariogram through repeated simulations (Krivoruchko and Gribov 2019; Gribov and Krivoruchko 2020). The following three main steps are involved in this method: (1) a semivariogram model is estimated from the available data. (2) New values were subsequently simulated at each location of the input data using the resulting semivariogram model. (3) Simulated data were used to estimate a new semivariogram model. Bayes’ rule is used to measure the weight for this semivariogram, which indicates how likely the measured data can be produced from the semivariogram. Each of the two previous rules (2 and 3) is repeated for the simulation of a new values at the input locations using the estimated semivariogram in step 1. A newly developed semivariogram model and, using the simulated data, its weights were then calculated. This automated process allows the elaboration of a wide range of semivariograms that have been used in SOM spatial analysis in our study area. (Krivoruchko and Gribov 2019).

Accuracy assessment

We used the leave-one-out cross-validation technique to assess the performance of the spatial interpolation methods. For this purpose, we have used the following formulas to calculate the mean error (ME) and root mean square error (RMSE):

$$ME = \frac{1}{N} \sum_{i=1}^N \{Z(s_i) - Z^*(s_i)\} \tag{5}$$

$$RMSE = \sqrt{\frac{1}{N} \sum_{i=1}^N \{Z(s_i) - Z^*(s_i)\}^2} \tag{6}$$

where: N is the total of the samples points number,
 $Z(s_i)$ is the observed value,
 $Z^*(s_i)$ is the estimated value. The method with the lowest RMSE was selected as the most accurate method.

RESULTS AND DISCUSSION

Descriptive statistics

The SOM content in the study area ranged from 0.35% to 3.72%, with an average of 1.346% and a standard deviation of 0.481% (Table.1). However, a large proportion of the soil samples studied (63.3%) were low in SOM, with a concentration below 3% (Bouasria et al. 2020), indicating the presence of agricultural land degradation and can contribute to a decrease in soil quality (Badraoui 2006; Naman et al. 2015). The value of CV (35.72%) for SOM content revealed moderate to high variability (Mulla and McBratney 2001). Moderate SOM variability is a product of climate, soil type, and land use. The study area has different soil pedological classes that influence its diversity, whereas intensive agricultural practices increase SOM spatial heterogeneity.

The SOM dataset revealed a positive skewness (0.885), indicating that the dataset had a non-normal distribution (Fig. 3a). A logarithmic transformation shaped the soil parameters (skewness = -0.354) (Table 1, Fig. 3b), and the transformed datasets passed the Kolmogorov–Smirnov test ($p = 0.000$). We used logarithmically transformed SOM data to meet the modeling requirements.

Table 1. Summary statistics of SOM content in the study area

	N	Min	Max	Mean	SD	CV	Skew	Kur
SOM (%)	368	0.350	3.720	1.346	0.481	35.720	0.855	2.052
Log(SOM)	368	-	-	-	-	-	-0.354	0.163

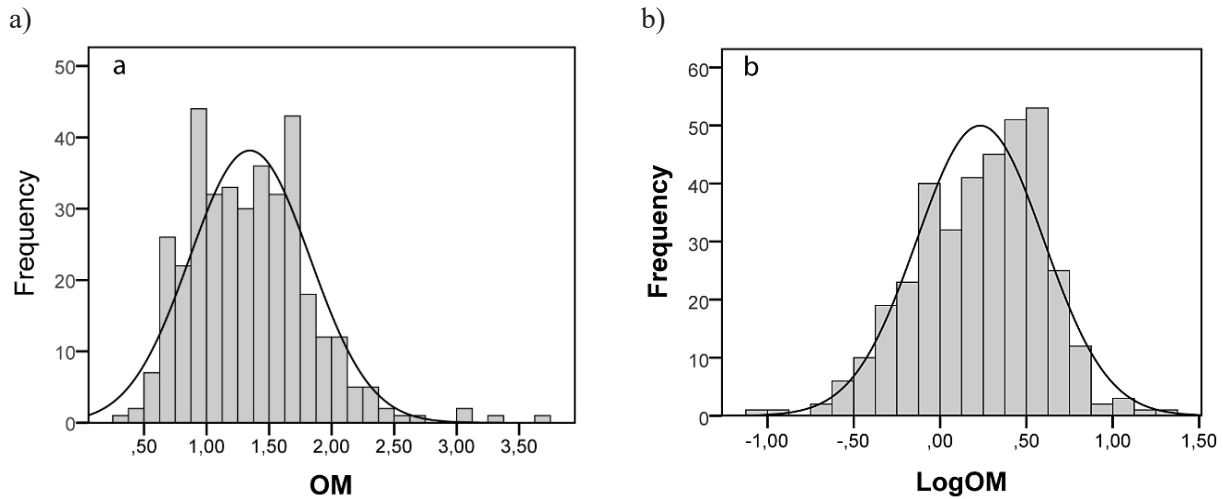


Fig. 3. Histograms of SOM content, (a) primary data, and (b) logarithmically transformed data.

Pedological maps of soils types

The soils in the study area are very heterogeneous (Fig. 4). According to the French CPCS classification of 1967, the main types of soils encountered belong to the following six classes: (i) The immature soils cover 13,009.98 ha or 30% of the total area of the study zone. They generally correspond to two types: modal alluvial immature soils and wind-blow immature soils; (ii) Vertisols cover an area of 1,413.56 ha (3%). These soils are located at the edges of the study area. They dominate 52% of irrigated areas; (iii) Calcimagnesian soils represent only 67.41 ha (less than 1%). These are essentially modal limestone browns; (iv) Isohumic soils cover 22,992.41 ha (53%). They are the most dominant in the study area. They are ancient and formed in a semi-arid Mediterranean climate; (v) Sesquioxide-rich (ferralsitic) soils cover a total area of 4,548.94 ha (3%); (vi) Hydromorphic soils occupy only 1,584.17 ha

(4%). These soils are mostly located in depressions. They are often associated with hydromorphic vertisols (CPCS 1967; Geoffroy 1978; Badraoui et al. 1993)

SOM spatial distributions by deterministic interpolation methods

In the study area, we analyzed SOM spatial distributions using IDW and LPI as deterministic methods. The results obtained using the cross-validation method showed that IDW provided better results than LPI (Table 3). Therefore, IDW is more accurate than LPI with a lower ME (0.0041, 0.0050) and smaller RMSE (0.397, 0.412), respectively. Many studies have demonstrated that the most significant aspect in obtaining accurate simulations is the model parameters (Bhunja et al. 2018; Đurđević et al. 2019; Long et al. 2020; Sahu et al. 2021). In general, deterministic approaches are simpler and have fewer options

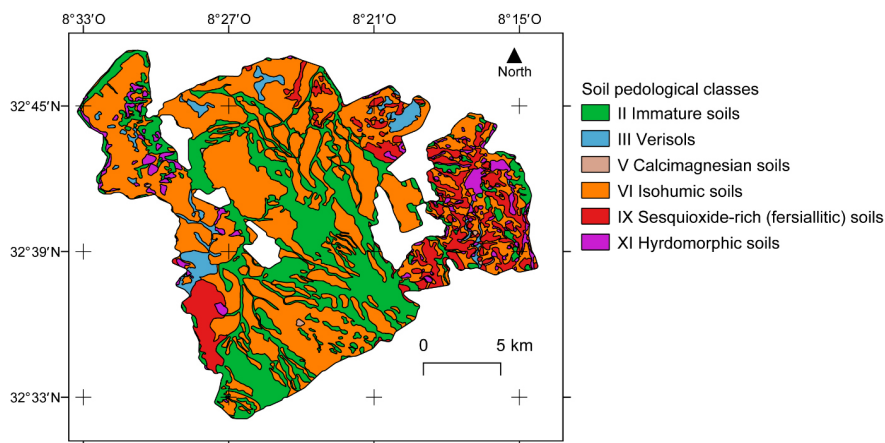


Fig. 4. Pedological soil map

Table 2. Surface of pedological classes in the study area

Soil classes	Surface (ha)	(%)
II. Immature soils	13009.98	29.83
III Vertisols	1413.56	3.24
V. Calcimagnesian soils	67.41	0.15
VI. Isohumic soils	22992.41	52.71
IX. Fersialitic soils	4548.94	10.43
XI. Hydromorphic soils	1584.17	3.63
Total	43616.48	100.00

for selecting model parameters than geostatistical methods, which require more parameterization (Xie et al. 2011; Liu et al. 2014; Đurđević et al. 2019). The statistical distributions of the sample data are not taken into account by deterministic interpolation methods. Under the stationarity assumption, OK is the best linear unbiased estimator of variables at unmeasured locations (Webster and Oliver 2008). Real data, on the other hand, practically never completely satisfies this assumption (Liu et al. 2014).

Spatial dependence of soils by intrinsic and extrinsic factors analysis

The SOM experimental variogram best fitted the exponential model. This finding is in agreement with those of previous studies (Bhunia et al. 2018; Đurđević et al. 2019). Most of the data were fitted to an exponential model (Fig. 5). The spatial correlation range for SOM was high (4207.74 m) (Table 4). This range shows the correct sampling number for SOM mapping in this study. Hence, the sampling design interval should be shorter than half of the range (Kerry and Oliver 2007). The results showed that the sampling design was appropriately designed to quantify the spatial variability distribution of SOM. However, the spatial dependence was moderate to low according to the nugget/sill ratio (74%). The spatial dependence of soil is influenced by both intrinsic and extrinsic factors (Cambardella et al. 1994). In our study area, soil properties were mainly affected by human activities that are strongly connected to agricultural practices (Mrabet et al. 2004).

Table 4. Summary cross-validation statistics of the best-fit theoretical model semivariogram parameters for SOM prediction

Nugget (τ^2)	Sill ($\tau^2 + \sigma^2$)	Range (ϕ) (m)	Nugget/sill	ME	RMSE
0.047	0.063	4207.74	0.74	0.0017	0.395

Table 3. Summary results of interpolation efficiencies and errors in SOM prediction

Type	Methods	RMSE	ME
Deterministic	IDW	0.397	0.0041
	LPI	0.412	0.0050
Geostatistical	OK	0.395	0.0017
	EBK	0.400	0.0018

Ordinary kriging (OK) and empirical Bayesian kriging (EBK) were used to spatially interpolate the SOM variability. The summary of the obtained results revealed that OK yielded better results than EBK (Table 3). OK showed the lowest RMSE and ME values of 0.395 and 0.0017, respectively, while EBK showed the highest RMSE and ME values of 0.400 and 0.0018, respectively.

Comparison of deterministic and geostatistical methods for ensuring cross-validation error

Among the tested interpolation techniques for SOM mapping, the most accurate was ordinary kriging, whereas LPI was the least accurate. The estimation of non-sampled locations using kriging depends significantly on the efficiency of variogram modeling. The optimal sampling design can determine the performance of a geostatistical method. To have a minimum cross-validation error, the distance, number and distribution of samples are the primary requirements (Mirzaee et al. 2016). The lowest RMSE was reported for OK. Therefore, the low values (very close to 0) of the mean error (ME) prove that the estimate is relatively unbiased or has a small bias. However, the LPI technique has a larger bias, expressed by a significantly higher ME (Đurđević et al. 2019). Thus, the low RMSE and ME values indicate a good match between the observed and estimated SOM content. The OK method often provides the best spatial interpolation for predicting values at non-measured locations (Zhang et al. 2011; Venteris et al. 2014; Tripathi et al. 2015; Bhunia et al. 2018). This interpolation method incorporates spatial autocorrelation and statistically optimizes weights.

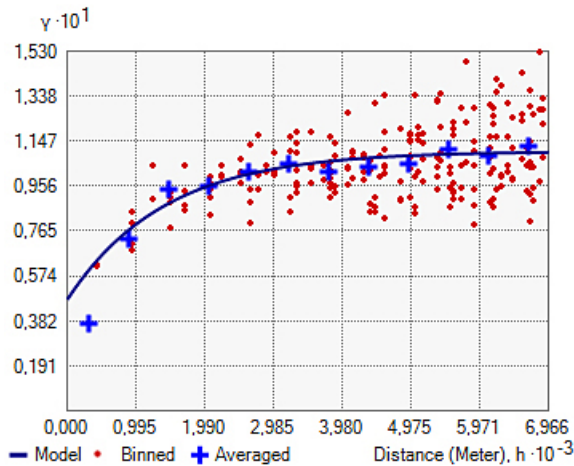


Fig. 5. Semivariogram model calculated with logarithmic transformed SOM data.

Soil organic matter (SOM) dynamics and scenarios of Doukkala Plain

It is observed that the immature and fersialitic soils, which dominate the southwestern and eastern parts of the Sidi Bennour region, had SOM values below 1.15% (Fig. 6). Moreover, a large majority of soils in the study area generally have low SOM values (Badraoui et al. 2000; Soudi et al. 2000), which can be explained by the human influence of intensive agricultural activities that do not consider the incorporation of crop residues into the soil (Dahan et al. 2001; Mrabet et al. 2004). Besides, a significant proportion of crop residues, instead of returning it to the soil, is used for animal feed, which is a good condition for losing large SOM quantities. It is therefore easy to assume that the SOM situation in the study area is very concerning, and it is easy to speculate that this situation will worsen in the future if appropriate decisions are not taken. Hence, it is essential to emphasize preserving soil fertility and sustainability by increasing SOM content through agricultural practices (Mrabet et al. 2004; Badraoui 2006).

In this regard, the efforts of policymakers and farmers must be jointly deployed to restore degraded soils. Possible scenarios can be focused on (1) encouraging the burial of residues, (2) crop rotation, and (3) the practice of direct-seeding. Indeed, studies in this area have shown that burying residues considerably improve soil richness in organic matter (Naman et al. 2015). Crop rotation, which is at least a triennial, plays a crucial role in the variation of the origins of organic inputs. The alternation

of sugar beet, cereal, and forage/legume crops, which account for approximately 20%, 50%, and 10%, respectively, is a crucial factor in the variation of organic inputs (ORMVAD 2020). Sugar beets and leguminous forages (soybeans, berseem, and alfalfa) provide more organic matter than cereals (corn, wheat, and sorghum) (Naman et al. 2015). Also, according to trials of no-till in different contexts, this practice has the potential to improve almost the majority of soil properties, including organic matter (Ibno Namr and Mrabet 2004; Mrabet et al. 2012; Laghrour et al. 2018; Aboutayeb et al. 2020). The combination of these solutions could improve the soil recovery in the study area.

CONCLUSION

A good understanding of the spatial distribution of SOM is crucial for agricultural and environmental management. Several methods have been used, and various algorithms have been tested to determine the most reliable approach to SOM spatial distribution. We applied four different spatial interpolation methods (IDW, LPI, OK, and EBK). These methods were evaluated using cross-validation technique. The study indicates that the OK interpolation method yields better results than the other approaches. LPI has the worst performance, resulting in a higher RMSE and ME than the other techniques.

From this study, we could draw the following conclusions: (1) the low SOM concentration in the studied soils indicates the possibility of soil degradation in the future. (2) The most suitable model for SOM is the exponential model. (3) The results show that the range is high and the spatial dependence of the SOM is moderate to low, which shows that the SOM content varies considerably depending on the soil genetics, which is combined with the strong influence of human activity, which is expressed by intensive soil management practices. (4) Ordinary kriging was the most accurate interpolation method, whereas local polynomial interpolation was the least accurate. (5) The results also show that in both the southwestern and eastern parts of the study area, low SOM content levels, which are less than 1.15%, were present in the SOM digital map. The heterogeneous spatial distribution of SOM involves the implementation of specific strategies

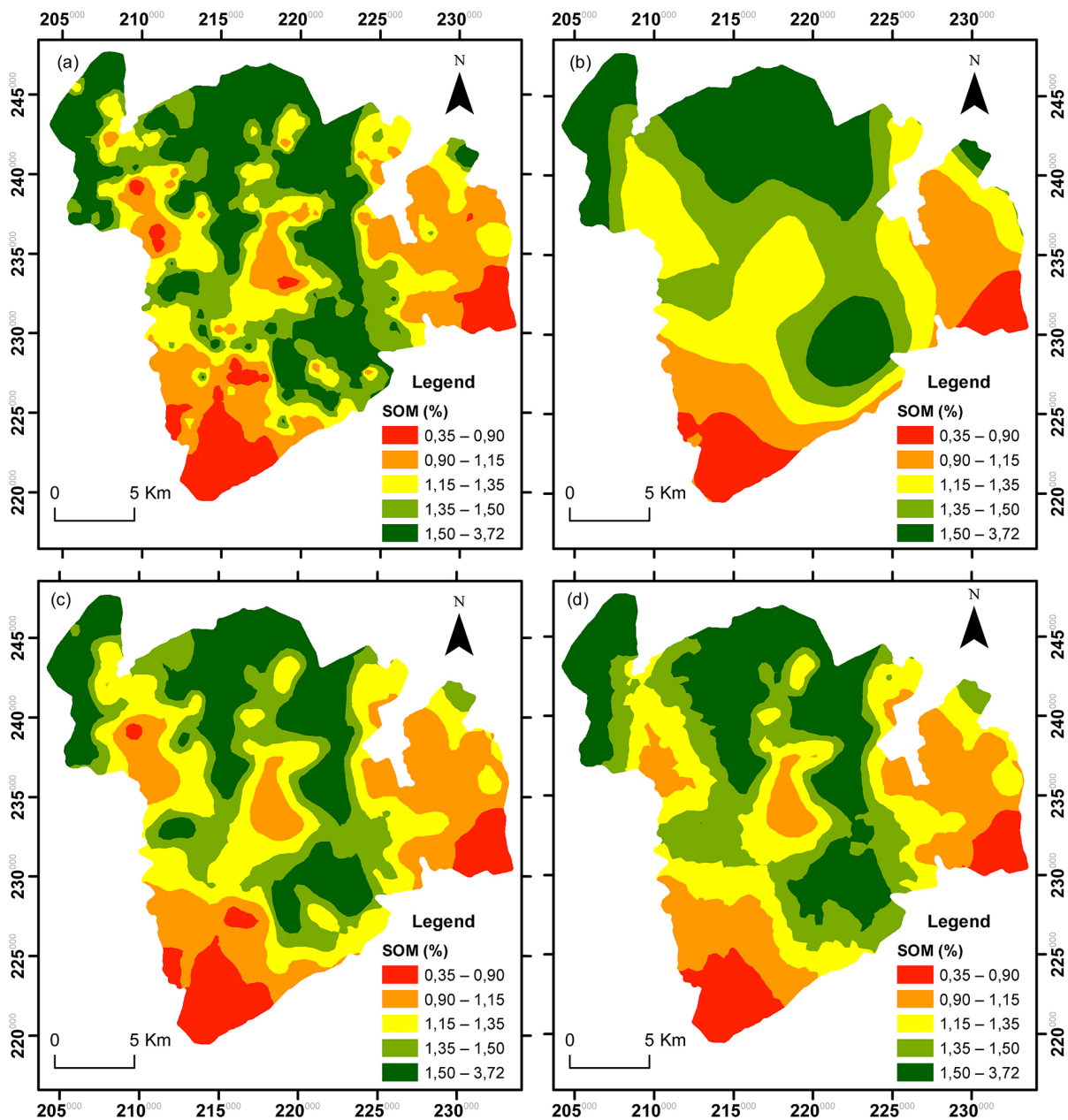


Fig. 6. Spatial distribution of SOM using: (a) IDW, (b) LPI, (c) OK, and (d) EBK.

for handling each soil case. (6) Policymakers and researchers can apply these approaches to different agricultural and agroecological issues, which can greatly facilitate or accelerate decision-making and influence the viability and sustainability of agricultural production.

Acknowledgments

The authors are grateful to the Doukkala Regional Agricultural Development Office, El Jadida, Morocco, for providing access to the pedological database.

REFERENCES

1. Aboutayeb R., El Yousfi B., El Gharras O. 2020. Impact of no-till on physicochemical properties of vertisols in chaouia region of Morocco. *Eurasian J Soil Sci.* 9, 119–125. <https://doi.org/10.18393/ejss.663502>
2. Badraoui M. 2006. Connaissance et utilisation des ressources en sol au Maroc. *Rapp général ‘50 ans développement Hum Perspect*, 2025, 91–117.
3. Badraoui M., Agbani M., Soudi B. 2000. Evolution de la qualité des sols sous mise en valeur intensive au Maroc. *Séminaire ‘Intensification Agric Qual des sols des eaux’*, Rabat, Maroc, 2–3.

4. Badraoui M., Bouaziz A., Kabbassi M. 1993. Contraintes physiques et potentialités du milieu sol dans les Doukkala. *Proj Développement amélioration la Prod céréalière en irrigué*, 1.
5. Bhunia G.S., Shit P.K., Maiti R. 2018. Comparison of GIS-based interpolation methods for spatial distribution of soil organic carbon (SOC). *J Saudi Soc Agric Sci*, 17, 114–126. <https://doi.org/https://doi.org/10.1016/j.jssas.2016.02.001>
6. Bogunovic I., Kistic I., Mesic M., et al. 2017. Reducing sampling intensity in order to investigate spatial variability of soil pH, organic matter and available phosphorus using co-kriging techniques. A case study of acid soils in Eastern Croatia. *Arch Agron Soil Sci*, 63, 1852–1863. <https://doi.org/10.1080/03650340.2017.1311013>
7. Bouasria A., Ibno Namr K., Rahimi A., Ettachfini E.M. 2020. Soil organic matter estimation by using Landsat-8 pansharpened image and machine learning. In: 4th International Conference On Intelligent Computing in Data Sciences (ICDS). Fez, Morocco 2020, 1–8.
8. Cambardella C.A., Moorman T.B., Novak J.M., et al. 1994. Field-Scale Variability of Soil Properties in Central Iowa Soils. *Soil Sci Soc Am J*, 58, 1501–1511. <https://doi.org/https://doi.org/10.2136/sssaj1994.03615995005800050033x>
9. CPCs. 1967. Classification des sols. Grognon, France.
10. Dahan R., Boughlala M., Mrabet R., et al. 2001. A review of available Knowledge on Land Degradation in Morocco.
11. Dai F., Zhou Q., Lv Z., et al. 2014. Spatial prediction of soil organic matter content integrating artificial neural network and ordinary kriging in Tibetan Plateau. *Ecol Indic*, 45, 184–194. <https://doi.org/10.1016/j.ecolind.2014.04.003>
12. Dhaliwal S.S., Naresh R.K., Mandal A., et al. 2019. Dynamics and transformations of micronutrients in agricultural soils as influenced by organic matter build-up: A review. *Environ Sustain Indic*, 1–2, 100007. <https://doi.org/10.1016/j.indic.2019.100007>
13. Đurđević B., Jug I., Jug D., et al. 2019. Spatial variability of soil organic matter content in Eastern Croatia assessed using different interpolation methods. *Int Agrophysics*, 33, 31–39. <https://doi.org/10.31545/intagr/104372>
14. Farina R., Marchetti A., Francaviglia R., et al. 2017. Modeling regional soil C stocks and CO₂ emissions under Mediterranean cropping systems and soil types. *Agric Ecosyst Environ*, 238, 128–141. <https://doi.org/10.1016/j.agee.2016.08.015>
15. Geoffroy J.-L. 1978. Carte pédologique: Plaine des Doukkala.
16. Goovaerts P. 1999. Geostatistics in soil science: state-of-the-art and perspectives. *Geoderma*, 89, 1–45. [https://doi.org/10.1016/S0016-7061\(98\)00078-0](https://doi.org/10.1016/S0016-7061(98)00078-0)
17. Gribov A., Krivoruchko K. 2020. Empirical Bayesian kriging implementation and usage. *Sci Total Environ*, 722, 137290. <https://doi.org/10.1016/j.scitotenv.2020.137290>
18. Ibno Namr K., Mrabet R. 2004. Influence of agricultural management on chemical quality of a clay soil of semi-arid Morocco. *J African Earth Sci*, 39, 485–489. <https://doi.org/10.1016/j.jafrearsci.2004.07.016>
19. Johnston A.E., Poulton P.R., Coleman K. 2009. Chapter 1 Soil Organic Matter: Its Importance in Sustainable Agriculture and Carbon Dioxide Fluxes. In: Sparks DLBT-A in A (ed). Academic Press, 1–57
20. Kerry R., Oliver M.A. 2007. Comparing sampling needs for variograms of soil properties computed by the method of moments and residual maximum likelihood. *Geoderma*, 140, 383–396. <https://doi.org/https://doi.org/10.1016/j.geoderma.2007.04.019>
21. Krivoruchko K., Gribov A. 2019. Evaluation of empirical Bayesian kriging. *Spat Stat*, 32, 100368. <https://doi.org/10.1016/j.spasta.2019.100368>
22. Laghrou M., Moussadek R., Mrabet R., Mekkaoui M. 2018. Effet à moyen et à long terme du semis direct sur la matière organique, la stabilité structurale et la compaction des sols argileux au Maroc. *Rev Marocaine des Sci Agron Vétérinaires*, 7, 356–362.
23. Lehmann J., Kleber M. 2015. The contentious nature of soil organic matter. *Nature*, 528, 60–68. <https://doi.org/10.1038/nature16069>
24. Liu D., Wang Z., Zhang B., et al. 2006. Spatial distribution of soil organic carbon and analysis of related factors in croplands of the black soil region, Northeast China. *Agric Ecosyst Environ*, 113, 73–81. <https://doi.org/10.1016/j.agee.2005.09.006>
25. Liu R., Chen Y., Sun C., et al. 2014. Uncertainty analysis of total phosphorus spatial-temporal variations in the Yangtze River Estuary using different interpolation methods. *Mar Pollut Bull*, 86, 68–75. <https://doi.org/10.1016/j.marpolbul.2014.07.041>
26. Long J., Liu Y., Xing S., et al. 2020. Optimal interpolation methods for farmland soil organic matter in various landforms of a complex topography. *Ecol Indic*, 110, 105926. <https://doi.org/10.1016/j.ecolind.2019.105926>
27. Mabit L., Bernard C. 2010. Spatial distribution and content of soil organic matter in an agricultural field in eastern Canada, as estimated from geostatistical tools. *Earth Surf Process Landforms*, 35, 278–283. <https://doi.org/10.1002/esp.1907>
28. Marchetti A., Piccini C., Francaviglia R., Mabit L. 2012. Spatial Distribution of Soil Organic Matter Using Geostatistics: A Key Indicator to

- Assess Soil Degradation Status in Central Italy. *Pedosphere*, 22, 230–242. [https://doi.org/10.1016/S1002-0160\(12\)60010-1](https://doi.org/10.1016/S1002-0160(12)60010-1)
29. Mirzaee S., Ghorbani-Dashtaki S., Mohammadi J., et al. 2016. Spatial variability of soil organic matter using remote sensing data. *CATENA*, 145, 118–127. <https://doi.org/10.1016/j.catena.2016.05.023>
30. Mrabet R., El-Brahli A., Anibat I., Bessam F. 2004. No-tillage technology: research review of impacts on soil quality and wheat production in semiarid Morocco. In: C. C-M., D.G (eds) *Options Méditerranéennes. Serie A, Séminaires Méditerranéens. Zaragoza: CIHEAM*, 133–138.
31. Mrabet R., Moussadek R., Fadlaoui A., van Ranst E. 2012. Conservation agriculture in dry areas of Morocco. *F Crop Res*, 132, 84–94. <https://doi.org/10.1016/j.fcr.2011.11.017>
32. Mulla D.J., McBratney A.B. 2001. Soil spatial variability. *Soil Phys Companion*, 343–373. [https://doi.org/10.1016/0167-1987\(87\)90053-5](https://doi.org/10.1016/0167-1987(87)90053-5)
33. Naman F., Soudi B., Adlouni C., Chiang C.N. 2015. Humic balance of soils under intensive farming: The case of soils irrigated perimeter of Doukkala in Morocco, 6, 3574–3581.
34. Oliver M.A., Webster R. 2015. *The Variogram and Modelling BT – Basic Steps in Geostatistics: The Variogram and Kriging*. In: Oliver MA, Webster R (eds). Springer International Publishing, Cham, 15–42
35. ORMVAD. 2020. *Rapport d'activité annuel de l'ORMVA des Doukkala*. El Jadida, Morocco.
36. Pang S., Li T.-X., Zhang X.-F., et al. 2011. Spatial variability of cropland lead and its influencing factors: A case study in Shuangliu county, Sichuan province, China. *Geoderma*, 162, 223–230. <https://doi.org/https://doi.org/10.1016/j.geoderma.2011.01.002>
37. Robinson T.P., Metternicht G. 2006. Testing the performance of spatial interpolation techniques for mapping soil properties. *Comput Electron Agric*, 50, 97–108. <https://doi.org/https://doi.org/10.1016/j.compag.2005.07.003>
38. Sahu B., Ghosh A.K., Seema. 2021. Deterministic and geostatistical models for predicting soil organic carbon in a 60 ha farm on Inceptisol in Varanasi, India. *Geoderma Reg*, 26, e00413. <https://doi.org/10.1016/j.geodrs.2021.e00413>
39. Schaum A. 2008. Principles of local polynomial interpolation. In: 2008 37th IEEE Applied Imagery Pattern Recognition Workshop, 1–6.
40. Soudi B., Naman F., Chiang C.N. 2000. Problématique de gestion de la matière organique des sols : cas des périmètres irrigués du Tadla et des Doukkala. Séminaire “Intensification Agric Qual des sols des eaux”, Rabat, 2–3.
41. Tripathi R., Nayak A.K., Shahid M., et al. 2015. Characterizing spatial variability of soil properties in salt affected coastal India using geostatistics and kriging. *Arab J Geosci*, 8, 10693–10703. <https://doi.org/10.1007/s12517-015-2003-4>
42. Van Kernebeek H.R.J., Oosting S.J., Van Ittersum M.K., et al. 2016. Saving land to feed a growing population: consequences for consumption of crop and livestock products. *Int J Life Cycle Assess* 21, 677–687. <https://doi.org/10.1007/s11367-015-0923-6>
43. Venteris E.R., Basta N.T., Bigham J.M., Rea R. 2014. Modeling Spatial Patterns in Soil Arsenic to Estimate Natural Baseline Concentrations. *J Environ Qual*, 43, 936–946. <https://doi.org/https://doi.org/10.2134/jeq2013.11.0459>
44. Walkley A., Black I.A. 1934. An examination of the degtjareff method for determining soil organic matter, and a proposed modification of the chromic acid titration method. *Soil Sci*, 37, 29–38. <https://doi.org/10.1097/00010694-193401000-00003>
45. Webster R., Oliver M.A. 2008. *Geostatistics for Environmental Scientists: Second Edition*. John Wiley and Sons, Rothamsted Research, United Kingdom.
46. Xie Y., Chen T., Lei M., et al. 2011. Spatial distribution of soil heavy metal pollution estimated by different interpolation methods: Accuracy and uncertainty analysis. *Chemosphere* 82, 468–476. <https://doi.org/10.1016/j.chemosphere.2010.09.053>
47. Yang F., Zhang G.-L., Yang J.-L., et al. 2014. Organic matter controls of soil water retention in an alpine grassland and its significance for hydrological processes. *J Hydrol*, 519, 3010–3027. <https://doi.org/10.1016/j.jhydrol.2014.10.054>
48. Zhang Z., Yu D., Shi X., et al. 2011. Effects of prediction methods for detecting the temporal evolution of soil organic carbon in the Hilly Red Soil Region, China. *Environ Earth Sci*, 64, 319–328. <https://doi.org/10.1007/s12665-010-0849-z>