

Modelling of Some Stealth Features for a Small Navy Ship at the Concept Design Stage

Natalia Formela, Mirosław Kazimierz Gerigk
Gdańsk University of Technology, Poland

In this paper the basic research problems associated with modelling the basic stealth features for a small navy ship at the concept design stage are introduced. Amongst the major stealth features considered are: the modification of the immersed ship hull form by a rapid change of the ship loading condition, and modification of the ship boundary layer by the hull skin cover. The other stealth features of the ship are not presented in this paper as they do not refer to the ship hydromechanics. The research method is based on the navy ship risk assessment and assessment of the ship performance. The risk may be estimated according to a proposed risk model. The risk assessment may be done according to the risk matrix criteria. The ship performance assessment is based on modification of the immersed ship hull form and modification of the ship boundary layer. Some elements of the research method and mathematical model for estimating the ship performance are introduced in the paper. In general, the research is associated with the interdisciplinary investigations and multi-criteria ship design. The problems presented in the paper follow the Ph.D. research conducted at the Faculty of Ocean Engineering and Ship Technology at Gdańsk University of Technology.

Keywords: small navy ship, stealth technology, ship hydromechanics, ship performance, risk assessment.

1. INTRODUCTION

The navy operations at sea often require to apply more and more advanced multi-task ships. The following paper refers to the problems associated with modelling some stealth features for a multi-task small navy ship at the concept design stage. The ship should enable to perform the general tasks, reconnaissance and combat operations, to support the safe and rescue operations, to launch the water drones, etc. Despite the size multi-task navy ships may serve as platforms for flying drones and unmanned water vehicles including autonomous water drones.

The main objective of the research is to work out a functional model of the multi-task small navy ship having some stealth features. To obtain the stealth features the modification of the immersed ship hull form and modification of the ship boundary layer may be used.

The research method combines the navy ship risk assessment and assessment of the ship performance.

The risk assessment requires first of all to estimate the ship susceptibility, vulnerability and

killability and consequences. Then the risk may be assessed using the risk matrix criteria. The risk assessment is associated with the ship killability which may be understood in the opposite way as the ship survivability. According to the risk estimation for the data scenario development the safety assessment of the ship may be done for the given operational conditions.

The ship performance assessment requires to define the operational conditions first of all, and next to estimate the ship floatability, stability, resistance and propulsion characteristics. Before the ship performance may be started, the ship weight should be estimated according to the data operational condition. At this stage of design the operational conditions concern mainly the ship loading condition, rather than the sea state. The sea-keeping of the ship will be considered at the preliminary stage of design.

It is proposed that the stealth features of the ship will be delivered by the modification of the immersed ship hull form, and modification of the ship boundary layer.

Establishing how big is the influence of the ship hull immersion and ship boundary layer on the ship resistance and propulsion is the main aim of the research.

From the formal point of view, the aim of the research is to work out a method for analyzing two basic features deciding if a ship may be considered as a stealth ship. The first feature is the modification of the immersed ship hull form by a relatively rapid change of the loading condition. The second feature is the modification of the ship boundary layer by the ship hull skin cover. Both features are closely connected to the ship hydromechanics. The research contains the method, models, numerical computations, validation and verification of results obtained, as well as conclusions.

2. THE RESEARCH PROBLEM - STEALTH CONCEPT

The aim of this paper is to outline a study into a feasibility of an advanced multi-task small navy vessel having some stealth features. The ship should be able to move on the water surface in two different operational conditions with the range of speed up to 30 knots. When the operational conditions have to be changed the ship speed may be substantially decreased.

To obtain the stealth features the modification of the immersed ship hull form by the relatively rapid change of the loading condition and modification of the ship boundary layer by the hull skin cover may be used.

It is proposed that the modification of the immersed ship hull form is done by the sequential rapid change of the loading conditions. The loading conditions very much depend on the quantity of water in the ballast tanks. It has been decided to take into account two loading conditions which have the impact on the ship stealth features. The first operational loading condition is called the surface loading condition, when the ship has no water or has the remaining quantity of water in the ballast tanks. The second is called the immersed loading condition when the ballast tanks are full of water. The process of ballasting the ship should be rather fast or rapid in time. Therefore the dynamical stability of the ship is a very important problem to be solved during the research. The ship speed should be decreased during the ship ballasting.

It is suggested that the modification of the ship boundary layer by the ship skin cover would increase the stealth effect.

The influence of the ship hull immersion and ship boundary layer on the ship resistance and propulsion may be investigated by estimating the flow around the ship hull. This may be checked using either the computational fluid dynamics technique or using the circulating channel.

The study has been carried out to find out what tactical advantages such the ship could offer to the military authorities and for the commercial users as well.

The major assumptions concerning the multi-task small stealth navy ship have been defined as follows:

- main dimensions (length x breadth x height): (60 meters) x (10 meters) x 8.4 (meters),
- displacement up to 900 tons,
- operational speed up to 30 knots.

The ship stealth domain has been defined as a combination of the following ship features:

- feature 1: ship hull form enabling to change the efficiency of the ship detection in the air and in the water,
- feature 2: materials including the ship hull skin cover enabling to change the efficiency of the ship detection in the air and in the water,
- feature 3: radiation of the noise and vibrations,
- feature 4: infrared and thermal radiation,
- feature 5: electromagnetic radiation,
- feature 6: mixed and residual radiation.

The research problems to be solved are as follows:

- development of a model for estimating the influence of the ship hull form on the efficiency of the ship detection in the air and in the water, depending on the loading condition,
- development of a model for estimating the influence of the ship hull skin cover on the boundary layer, wake and ship resistance,
- development of a matrix enabling to combine the ship stealth features, depending on needs.

The challenges associated with the research are significant. It results from the fact that e.g. the loading condition and boundary layer (wake and

resistance) have divergent design requirements in general.

3. THE RESEARCH METHOD

The research method is a kind of risk-based performance-oriented method which enables to assess the safety and performance of a ship at the design stage and in operation, Gerigk (2010). The method enables to take into account the influence of factors from different sources including the design, operational and safety management related factors. The risk assessment and performance assessment may be done for all the possible design scenarios and sequences of events. All the above describe the so-called holistic approach to ship safety.

Within the method the risk assessment is based on application of the risk model which may be modified according to the scenarios of events under consideration. The risk assessment requires first of all to estimate the ship susceptibility, vulnerability and killability and consequences. Then the risk may be assessed using the risk matrix criteria. The risk assessment is associated with the ship killability which may be understood in the opposite way as the ship survivability. According to the risk estimation for the data scenario development the safety assessment of the ship may be done for the given operational conditions.

The risk assessment. The risk model associated with the different hazards and scenarios regarding a multi-task small navy ship should be estimated according to the well known general formulae [14]:

$$R_i = P_i \times C_i \quad (1)$$

where:

P_i - probability of occurrence of a given hazard;

C_i - consequences following the occurrence of the data hazard and scenario development, in terms of fatalities, injuries, property losses and damage to the environment.

In the case of the multi-task small navy ship depending on a hazard occurred a general formulae for estimating the risk may be presented as follows [10-16]:

$$R_i = P_{HO} P_{SD/HO} (1 - P_{SNSS}) C \quad (2)$$

where:

P_{HO} - probability of the data hazard occurrence,

$P_{SD/HO}$ - probability of the data scenario development conditional on the data hazard occurrence,

P_{SNSS} - probability of small navy ship survivability conditional on the data scenario development and conditional on the data hazard occurrence,

C - consequences regarding the fatalities C_{HF} (HF - Human Factor), property (ship) C_{SNS} (SNS - Small Navy Ship as a whole), environment C_E (E - Environment), estimated at each stage of an accident (catastrophe).

A major hazard taken into account during the research is the killability of the small navy ship under consideration. The probability of the data hazard occurrence, probability of the ship killability may be written as follows [10-16]:

$$P_{HO} = P_K = P_S P_{K/S} \quad (3)$$

where:

P_K - probability of the ship killability,

P_S - probability of the ship susceptibility,

$P_{K/S}$ - conditional probability vulnerability in the case of the ship damage.

The probability of the ship susceptibility P_S is the measure of the ship inability to intercept any of the threats: detecting, classifying, targeting, attacking or hitting. The key issue from the interception point of view are the stealth features the multi-task small navy ship may possess.

The probability P_{SNSS} may be estimated using the following methods [14]:

- binary method,
- method based on definition of the ship hydromechanics characteristics,
- method based on definition of the ship performance including the ship dynamics in waves.

In the case of the last method the sway, heave, roll and pitch functions in time domain have been anticipated as the major characteristics enabling the risk assessment [14]. The risk analysis requires to estimate the conditional probabilities concerning the major events (initial events, hazards), intermediate events and final events (consequences). The typical additional events may concern the water on deck, air cushions, cargo leakage, additional heeling moments, etc. The above risk model should be prepared in such a way to enable to consider many of the possible

scenarios using the event tree analysis ETA [10-16].

The performance assessment. The performance assessment may be done using either the physical model (towing tank or circulating channel investigations) or numerical simulation techniques. It has been assumed that the computer simulation will be used during the research. Within the research the ship performance requires to estimate the ship floatability, stability, dynamical stability and resistance and propulsion.

The ship hydromechanics characteristics associated with the above features are the base for estimation how much the modification of the immersed ship hull form by the sequential rapid change of the loading condition affects the ship stealth characteristics, such as the ship detection in the air and in the water. The latest concerns the modification of the ship boundary layer by the ship skin cover as well.

The ship performance assessment requires to define the operational conditions first of all and next to estimate the ship floatability, stability, resistance and propulsion characteristics. Before the ship performance may be started the ship weight should be estimated according to the data operational condition. At this stage of design the operational conditions concern mainly the ship loading condition than the sea state. The seakeeping of the ship will be considered at the preliminary stage of the design.

It is proposed that the stealth features of the ship will be delivered by the modification of the immersed ship hull form and modification of the ship boundary layer.

To establish how big the influence of the ship hull immersion and ship boundary layer on the ship resistance and propulsion is, is the main aim of the research.

From the formal point of view the aim of research is to work out a method for analyzing two basic features deciding if a ship may be considered as a stealth ship. The first feature is the modification of the immersed ship hull form by a relatively rapid change of the loading condition. The second feature is the modification of the ship boundary layer by the ship hull skin cover. Both the features are closely connected with the ship hydromechanics. The research contains the method, models, numerical computations, validation and verification of results obtained and conclusions.

The problems associated with the ship performance should be precisely considered for the

multi-task small navy ship under consideration during the Ph.D. studies carried out at the Faculty of Ocean Engineering and Ship Technology Gdańsk University of Technology. The problems referring to the ship manoeuvrability and sea-keeping will be investigated according to the methodology of another research project.

As it was mentioned before the research method combines the navy ship risk assessment and assessment of the ship performance [6-9, 17-18].

The method. The method is based on the following main steps:

- setting up the requirements, criteria, limitations, safety objectives,
- defining the ship including the hull form, arrangement of internal spaces, ballasting, weights and centre of gravity, loading condition,
- defining the environment,
- identifying the hazards and sequences of events (scenarios),
- assessing the ship performance including the ship floatability, stability, dynamic stability (research task 1: modification of the immersed ship hull form is done by the sequential rapid change of the loading condition), ship flow and resistance (research task 2: modification of the ship boundary layer by the ship skin cover),
- estimating the risk according to the event tree analysis ETA and risk model (risk value is estimated for each scenario separately),
- assessing the risk according to the risk acceptance criteria (risk matrix) and safety objectives,
- managing the risk according to the risk control options,
- selecting the design that meets the requirements, criteria, limitations, safety objectives,
- optimizing the design,
- making the decisions on safety [1-5, 10-16].

The structure of the method is presented in Figure 1 [14].

The criterion within the method is to achieve an adequate level of risk using the risk acceptance criteria, risk matrix [14]. Providing a sufficient level of safety based on the risk assessment is the main objective. It is either the design, operational or organizational objective. Safety is the design objective between the other objectives. The measure of safety of the object is the risk (level of

risk). The key drivers during the ship design and during the research on the multi-task small navy ship are the research task 1 and research task 2.

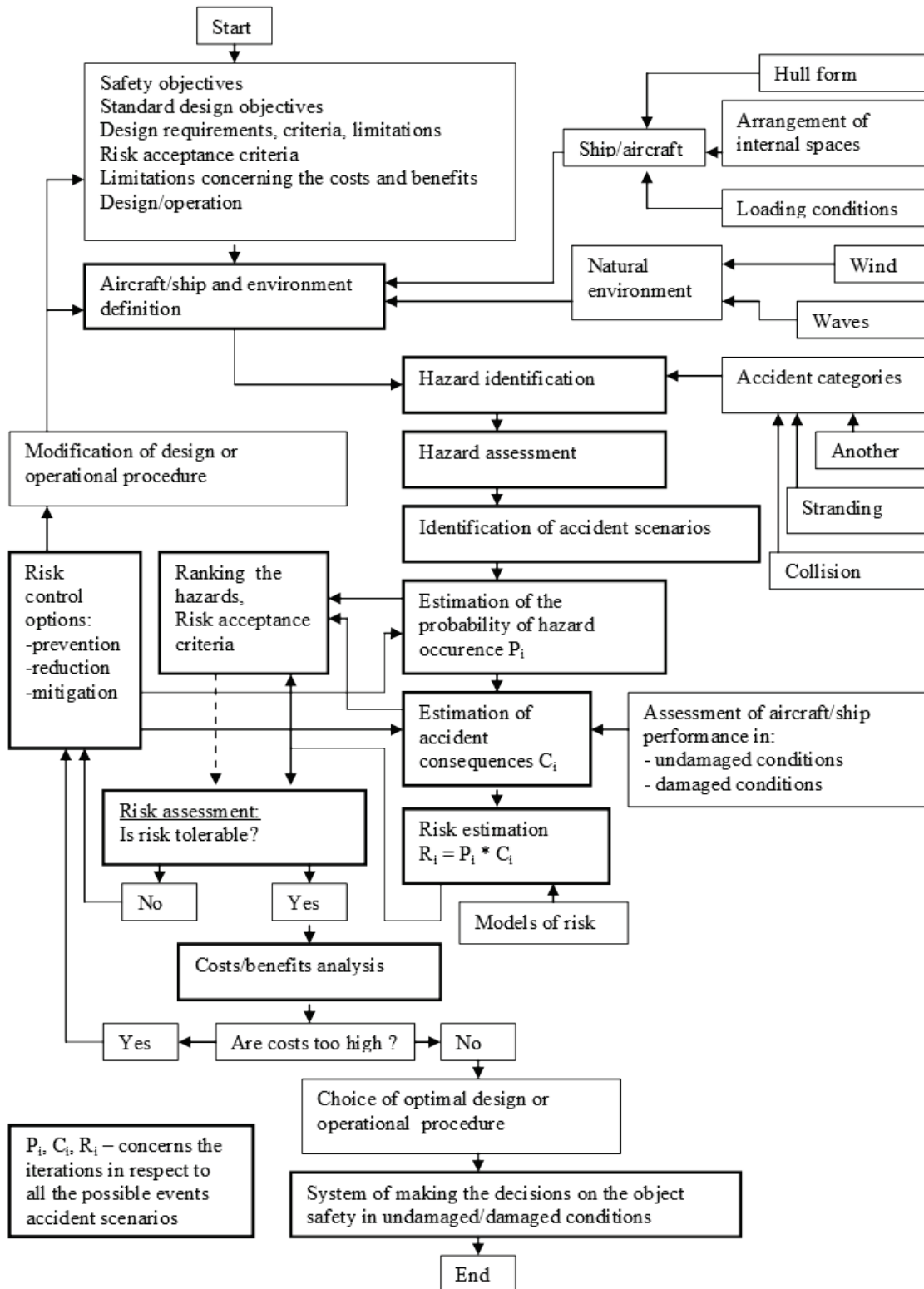


Fig. 1. The structure of the research method combining the risk assessment and performance assessment of the multi-task small navy ship.

From the design point of view the main research tasks associated with development of the small stealth ship concept are as follows:

- development of ship hull form and arrangement of internal spaces,
- development of ship structure and ship hull skin nano-cover,
- selection of ship devices and subsystems,
- estimation of ship mass and centre of gravity,
- investigation of ship performance including the ship floatability, stability, resistance and propulsion, by the computer simulation,
- investigations of selected problems associated with the ship performance during towing the tank or circulating channel investigations,
- investigations of the vibrant-acoustic field of the ship using the computer simulation and acoustic camera-based measuring system,
- investigations of influence of the ship hull skin nano-cover on the boundary layer using both the computer simulation and physical model investigations,
- optimization of the ship stealth features using the computer simulation.

4. SOME REMARKS ON THE MODEL FOR MODIFICATION OF IMMERSSED SHIP HULL FORM BY SEQUENTIAL RAPID CHANGE OF LOADING CONDITION

It has been assumed that modification of the immersed ship hull form should be achieved by the sequential rapid change of the loading condition. The buoyancy of the ship increases and decreases according to the efficiency of the ballasting pumps. Two options have been considered referring to the speed, changing the loading condition from the floating loading condition to the immersed loading condition and the other way round. It is connected with the rate of flow of the ballasting pumps. The maximum quantity of the ballast water (volume of the ballast tanks) is about 200 tons. Two pumps of the rate of flow 10 cubic meters per minute or two pumps of the rate of flow 25 cubic meters per minute may be applied. It means that the ballast tanks may be full of water in 10 minutes in the first case and in four minutes using the pump of efficiency 25 cubic meters per minute.

During the ballasting process the dynamic stability of the ship should be permanently controlled. It is very important to the location of

the centre of gravity and ship centre of buoyancy in each step time.

Thus the restoring moments M_R (transversal or longitudinal) at small changes of heel is composed of the moment due to the ship buoyancy and moment due to the ship weight:

$$M_R = M_B + M_W \quad (4)$$

where:

M_B - moment due to the ship buoyancy,
 $M_B = V \rho g GZ_{\text{quasi-static}}$,

V - immersed buoyancy of the ship,

ρ - density of water,

g - gravity acceleration,

$GZ_{\text{quasi-static}}$ - righting arm of buoyancy for the quasi-static condition at each buoyancy increase and time step,

M_W - moment due to the ship weight,

$M_W = \sum (\rho g \Delta V_{Ti}) r_i$,

ΔV_{Ti} - volume of ballast water in the ballast tank under consideration,

r_i - heeling arm following from the ballast water in the data ballast tank.

The scheme of modification of immersed ship hull by sequential rapid change of loading condition is presented in Figure 2.

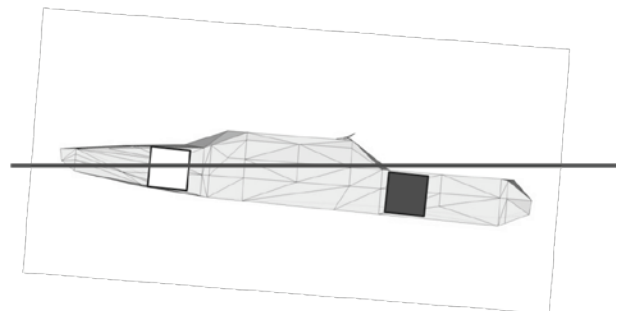


Fig. 2. The scheme of modification of immersed ship hull by sequential rapid change of loading condition (Graphics by Gerigk M.K., 2014).

5. SOME REMARKS ON THE MODEL FOR MODIFICATION OF SHIP BOUNDARY LAYER BY SHIP SKIN COVER

It is prepared that the simulation of the ship flow will be based on the RANSE (Reynolds Averaged Navier-Stokes Equations) flow model, implemented in the STAR-CCM+ solver. It has been assumed that the simulation in the calm sea condition will be considered first of all. Later the

problems of the ship motion in waves will be analyzed.

The simulation of the ship motion includes the following problems:

- taking into account the free surface of water;
- solving the equations of motion for the floating ship in calm water and in waves;
- preparing the dynamic (i.e. moving) mesh; the floating ship is moving during the simulation; it means that the nodes of mesh in which the flow is being solved should move as well.

The Volume of Fluid (VOF) model will be used to capture the flow of two fluids (air and water) on the free surface of water. It means that the fluids (air and water) filling the domain are treated as single fluid. An additional variable is introduced for each of the components: "volume fraction" c_i . The parameters of the resulting multiphase fluid (e.g. density ρ) are then computed as follows, by Kraskowski [16]: $\rho = \sum_i \rho_i \cdot c_i$, where c_i and

the mentioned degrees of freedom are considered. In the case of using the "sliding mesh" approach introducing such a simplification greatly simplifies the mesh generation, by Kraskowski [16].

As mentioned above, solving the flow in the domain with moving boundaries (in the considered case – the boundaries of the floating object), requires using the dynamic mesh. Different approaches are possible here: rigid mesh (no relative motion between nodes), deforming mesh, overlapping mesh and sliding mesh, by Kraskowski [16].

Such an approach provides good compromise between the accuracy, robustness and computational time. The ship hull is closed into the cylindrical sub-domain located in larger rectangular domain. The inner sub-domain undergoes angular and translational motion, while the outer domain undergoes only translational motion, by Kraskowski [16].

For the presented analysis the sliding mesh approach was selected and its simplified example is presented in Figure 3.

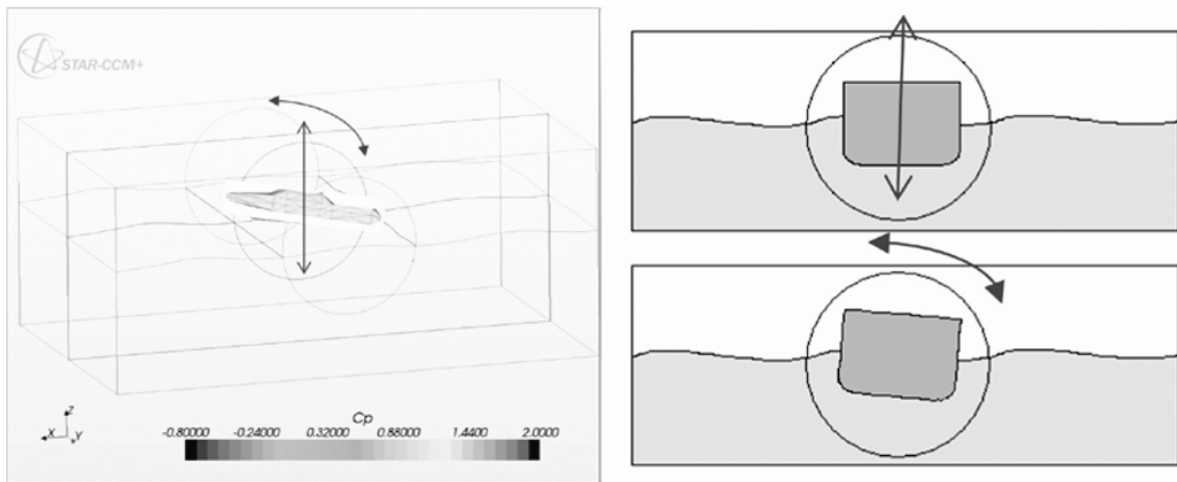


Fig. 3. The simplified example how the sliding mesh approach will be applied for the motion analysis of the small navy ship under consideration, by Kraskowski [16].

ρ_i are the volume fraction and density for each of the components, respectively. Note that $\sum_i c_i = 1$ in each point of the domain.

Solving the motion of the floating ship it is necessary to integrate the Newton equations using the forces due to weight of the structure and forces exerted by the fluids (these are updated in each time step). It has been assumed that the sway, heave, roll and pitch motions are the crucial characteristics from the ship performance point of view. A simplification is used: only the motion in

6. A CONCEPT OF A SMALL STEALTH SHIP

The primary aim of the research is to work out a functional model of functional model of the multi-task small stealth navy ship which should be able to move on the water surface with two different operational (loading) conditions with the range of speed up to 30 knots. The novel solutions have been applied regarding the hull form, arrangement of internal spaces, materials and propulsion system. The ship is defined as a mono-hull having an unconventional arrangement of internal spaces.

The major factors to obtain the stealth features of the ship are: hull form, hull skin cover, limited boundary layer (nano-skin) and wake, limited vibration and acoustic emission.

A visualization of the second version (2nd design version) of the multi-task small navy ship MTSNS under consideration is presented in Figure 4.

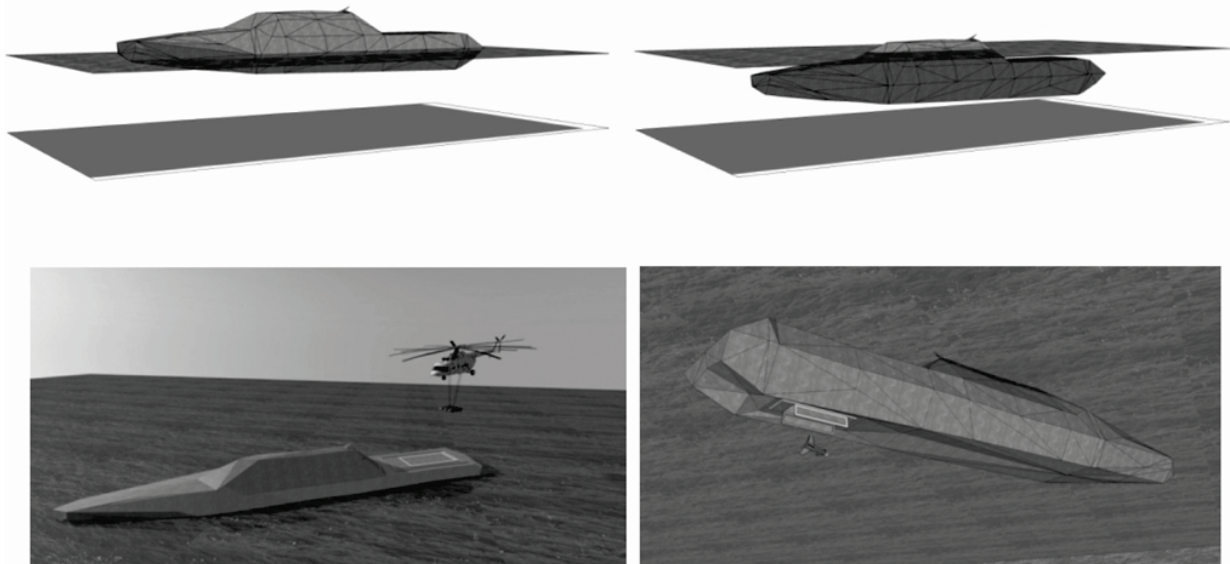


Fig. 4. A visualization of the second version (2nd design version) of the of the multi-task small navy ship MTSNS (Graphics by Gerigk M.K., 2014).

The MTSNS has the following main dimensions (designed by Gerigk M.K., 2014):

- Length $L = 60$ m,
- Breadth $B = 8$ m,
- Maximum speed $v = 30$ knots.

The main technical data of the MTSNS are as follows (designed by Gerigk M.K., 2014):

- a multi-purpose vessel for the combat or/and logistic tasks,
- innovative solutions applied: multi-fuel main engine, lift for launching the water drones and air drones, stealth technology features.

7. CONCLUSIONS

The problems presented in the paper are connected with the research on the modelling of the stealth features for the multi-task small navy ship MTSNS at the concept design stage. The research itself seems concerns the application of an advanced approach to the stealth technology problems presented in the paper.

The major research problems from the stealth technology application point of view have been defined as follows:

- research task 1: modification of the immersed ship hull form is done by the sequential rapid change of the loading condition, ship flow and resistance,

- research task 2: modification of the ship boundary layer by the ship skin cover.

The research presented in the paper is divided into a few parts. One of them is associated with submitting the projects to be supported by the National Centre for Research and Development in Warsaw. The whole research is performed by a team of Ph.D. students.

REFERENCES

- [1] Abramowicz-Gerigk T. 2005. Investigation on Standards for Ship Manoeuvring Performance at Slow Speed in Constrained Space. in C. Guedes Soares, Y. Garbatow & N. Fonesca (eds.), Maritime Transportation and Exploitation of Ocean and Coastal Resources. Vessels for Maritime Transportation. *Proceedings of the 12th International Congress of the International Maritime Association of the Mediterranean (IMAM'2005)*, Lizbona, Portugalia 2005, Vol.1: 3-8. London, Balkema.
- [2] Abramowicz-Gerigk T. 2006. Determination of Safety Factors for Ship Berthing Operations.

- Proceedings and Monographs in Engineering, Water and Earth Sciences. *Proceedings of the European Safety and Reliability Conference 2006 (ESREL 2006)*, Volume 3, Estoril, Portugal, 18-22 September 2006, Published by Taylor & Francis / Balkema, London / Leiden / New York / Philadelphia / Singapore, 2737-2742.
- [3] Abramowicz-Gerigk T. 2008a. Experimental study on the hydrodynamic forces induced by a twinpropeller ferry during berthing. *Ocean Engineering. Elsevier*. Vol. 35, Issues 3-4, March 2008: 323 - 332.
- [4] Abramowicz-Gerigk T. 2008b. The risk analysis of harbour operations. in S. Martorell, C. Guedes Soares & Julie Barnet (eds.) *Safety Reliability and Risk Analysis: Theory, Methods and Applications. Proceedings of the ESREL 2008 and 17th SRA-Europe Conference*, Valencia, Vol. 4: 3343-3350, London: Balkema.
- [5] Abramowicz-Gerigk T., Burciu Z. 2013. Safety assessment of maritime transport - Bayesian risk-based approach in different fields of maritime transport. in C. Guedes Soares, & F. Lopez Pena (eds.) *Developments in Maritime Transportation and Exploitation of Sea Resources. Proc. 15th Int. Congress of the International Maritime Association of the Mediterranean (IMAM'2013)*, A Coruna, Vol.2: 699 - 704, London: Balkema.
- [6] Bertram V. *Practical Ship Hydrodynamics. Butterworth-Heinemann*, © Volker Bertram 2000, ISBN 0 7506 4851 1.
- [7] Dudziak J. *Teoria okrętu (Theory of Ships)*, Publisher: Fundacja Promocji Przemysłu Okrętowego i Gospodarki Morskiej, Gdańsk 2008.
- [8] Faltinsen O.M. *Sea Loads on Ships and Offshore Structures*, Cambridge University Press, 1990.
- [9] Faltinsen O.M. *Hydrodynamics of High-Speed Marine Vehicles*, Norwegian University of Science and Technology, Cambridge University Press, 2005.
- [10] Gerigk M. 2004. On a risk-based method for safety assessment of a ship in critical conditions at the preliminary design stage. *Polish Maritime Research*, No. 1 (39), Vol. 11, 8-13.
- [11] Gerigk M. 2005. Challenges of modern assessment of safety of ships in critical conditions. *Proceedings and Monographs in Engineering, Water and Earth Sciences. Proceedings of the 12th International Congress of the International Maritime Association of the Mediterranean IMAM 2005*, Volume 2, Lisboa, Portugal, 26-30 September 2005, Published by Taylor & Francis / Balkema, London / Leiden / New York / Philadelphia / Singapore, 1529-1536.
- [12] Gerigk M. 2006. A method for assessing hazards, risks and safety of damaged ships at sea. *Proceedings and Monographs in Engineering, Water and Earth Sciences. Proceedings of the European Safety and Reliability Conference 2006 (ESREL 2006)*, Volume 3, Estoril, Portugal, 18-22 September 2006, Published by Taylor & Francis / Balkema, London / Leiden / New York / Philadelphia / Singapore, 2783-2790.
- [13] Gerigk M. 2008. Modeling of hazards, consequences and risk for safety assessment of ships in damaged conditions in operation. *Proceedings and Monographs in Engineering, Water and Earth Sciences. Proceedings of the European Safety and Reliability Conference, ESREL 2008 and 17th SRA-Europe*, Volume 4, Valencia, Spain, 22-25 September 2008, Published by CRC Press, Taylor & Francis Group, Balkema, Boca Raton / London / New York / Leiden, 3303-3310.
- [14] Gerigk M. 2010. A complex method for safety assessment of ships in damaged conditions using the risk assessment (D.Sc. thesis), *Monography No. 101, Published by the Gdansk University of Technology (in Polish)*, Gdansk 2010.
- [15] Gerigk M. 2012. Assessment of safety of ships after the collision and during the ship salvage using the matrix type risk model and uncertainties in Sustainable Maritime Transportation and Exploitation of Sea Resources. *Proceedings of the 14th International Congress of the International Maritime Association of the Mediterranean (IMAM)*, Volume 2: 715-719, London: Balkema.
- [16] Gerigk M., Kraskowski M. Safety assessment of ships in damaged conditions by the risk-based method. Assessment of damaged ship performance using the CFD modeling. *Joint 19th International Conference on Hydrodynamics in Ship Design and 4th International Symposium on Ship Manoeuvring*, Hława, Poland, 19th - 21st September 2012, ISBN 978-83-9229-352-1, pp. 100-110.
- [17] Krężelewski M., *Hydromechanika ogólna i okrętowa (General ship hydromechanics), część I (part I), Skrypt Politechniki Gdańskiej*, Gdańsk 1977.
- [18] Krężelewski M., *Hydromechanika ogólna i okrętowa (General ship hydromechanics), część II (part II), Skrypt Politechniki Gdańskiej*, Gdańsk 1982.

Mirosław Kazimierz Gerigk
Gdańsk University of Technology, Poland
mger@pg.gda.pl

