



CLASSIFICATION OF FACADE DECORATION OF SECESSION BUILDINGS BUILT BY I. LEVYNSKY COMPANY IN LVIV

KLASYFIKACJA DEKORACJI ELEWACJI BUDYNKÓW OKRESU SECESJI WYKONANYCH PRZEZ SPÓŁKĘ I. LEWYŃSKIEGO WE LWOWIE

Tetyana Kazantseva

Ph.D, Associate Professor

Lviv Polytechnic National University,
Institute of Architecture,
Department of Design and Architecture Basics,
Department of Urban Planning

Solomiya Ponkalo

Assistant

Lviv Polytechnic National University,
Institute of Architecture,
Department of Design and Architecture Basics

STRESZCZENIE

Główne typy i podtypy dekoracyjne elewacji budynków secesyjnych były klasyfikowane i identyfikowane na podstawie badań terenowych fasad wykonanych przez Spółkę I.Lewyńskiego we Lwowie. Cechy położenia i stosowania tych elementów dekoracji elewacji są opisane w konkretnych przykładach.

Słowa kluczowe: elewacje budynków wykonanych przez Spółkę I.Lewyńskiego, Secesja, Lwów, klasyfikacja elementów elewacji dekoracji, typy i podtypy elewacji dekoracji.

ABSTRACT

The main types and subtypes of facade decoration of Secession buildings were classified and identified based on natural researches of facades made by I.Levynskyy's Company in Lviv. The features of the location and use of these facade decoration elements are described in concrete examples.

Key words: facades of I. Levynskyy's Company buildings, Secession, Lviv, classification of elements of facade decoration, types and subtypes of facade decoration.

INTRODUCTION

The architectural object is often estimated at first by the finishing of its facades, that means their decoration features. William Morris, the theorist of Modern Style, considered architecture to be an art of decorative building. And it is not for nothing, because traditionally the decoration was the most important part of architectural art, its costume. A lot of researches are devoted to the architectural decoration. The art of I. Levynskyy, particularly, his factory's production and some aspects of his architectural activity were investigated by O. Noga, J. Biryulyov, I. Zhuk, T. Kazantseva and others. However, these two lines of research have developed separately and have not intersected at a single point, namely - the classification of the facade decoration elements of Secession buildings by I. Levynskyy's Company.

The purpose of this publication – is to classify and identify common elements of facade decoration of Secession buildings made by I. Levynskyy's Company in Lviv, as well as to describe the usage of certain decorative elements on examples.

BASIC THEORETICAL PART

Based on bibliographic analysis we defined the amount of buildings erected by I. Levynskyy's Company during the Secession in Lviv. After that, photography, visual inspection and analysis of objects and elements of facade decoration were held. Facade decoration has been divided into structural (or "active") and decorative ("passive") elements. Further classification has led into the smaller types division. Thus, entrance portals, windows, bow windows, balconies, brackets, cornices and attics we attributed to constructive type, and rustication, molding, majolica and order forms (which in Secession attained purely decorative nature) we attributed to the decorative type. This division is caused by the attitude of Secession artists to decoration - structural elements were given a special, unusual configuration, which was also the decoration while in decorative elements a non-bearing, decorative feature was emphasized. The classification of elements of facade decoration made by company I. Levynskyy's Company is given in Table 1.

Entrance portals and windows are one of the leading types of structural decoration. They are special in the forms of openings and their decorative ornaments. Based on investigations of Lviv buildings facades, designed by I. Levynskyy, we can state that the forms of openings of the entrance portals and windows are usually rectangular (buildings in 4 Bohomoltsia str., 4 Bandery str., 1 Acad. Pavlova str., 70 Lychakivska str., 8 Doncova str., 38 Hen. Chupryny str., 20 Doroshenka str., 14 Levytskoho str.) (fig. 1), arched (2 Hen. Chupryny, 4 Shevchenka Ave., 4 Briullov str., 6 Bandery str., 9 Dudayeva str., 12 Vyshenskoho str., 2 Hlibova str.) (fig. 2) and sometimes tryforium (11A Hen. Chupryny str.). Diversity of openings forms is achieved due to decorative window and doors frames in the form of original archivolt.



Fig. 1. Rectangular portal (16 Levytskoho str.). Source: il. T. Kazantseva, S. Ponkalo



Fig. 2. Arch portal (9 Dudajeva str.). Source: il. T. Kazantseva, S. Ponkalo:

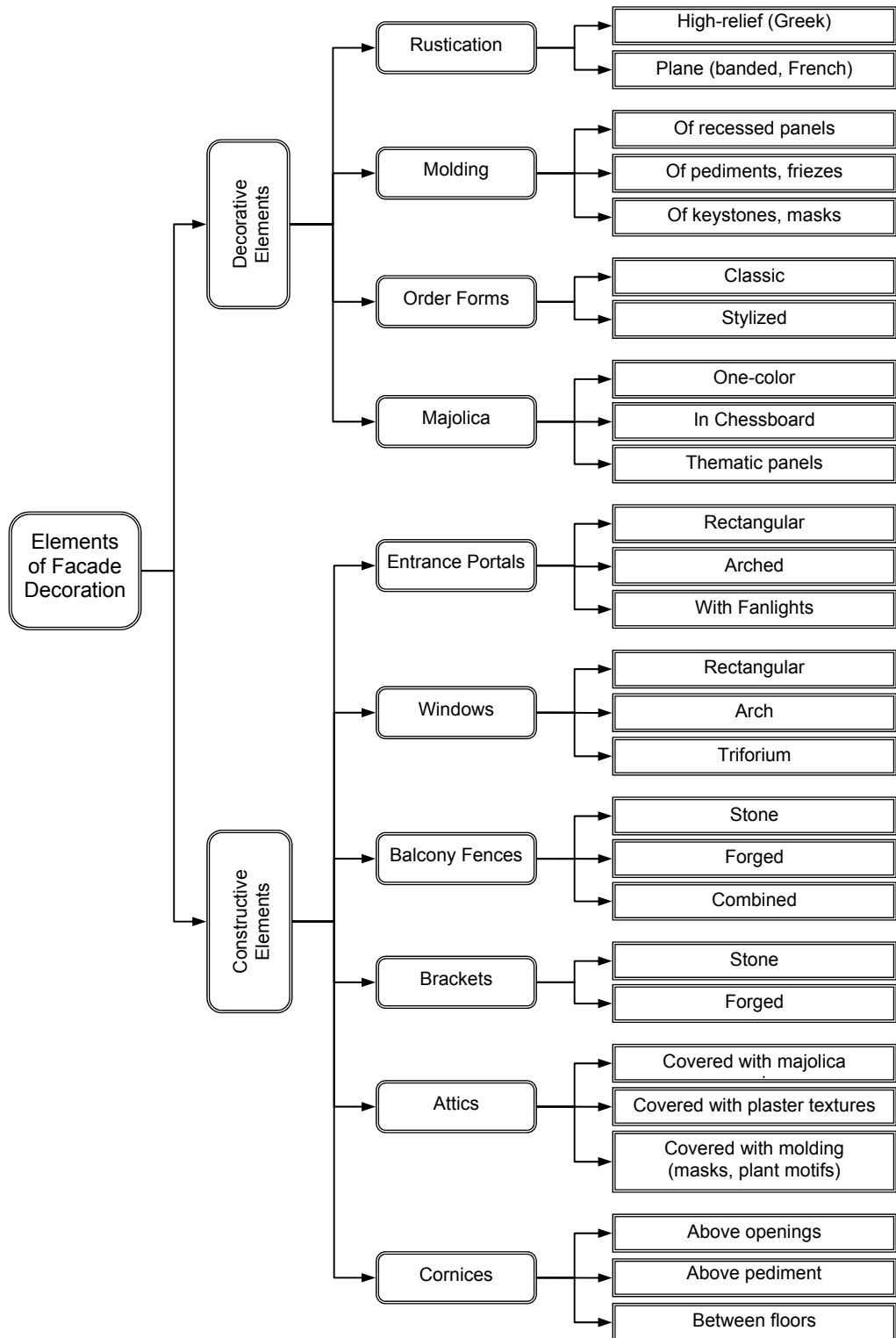


Table 1. Classification of facade decoration made by I. Levynskij Company in Lviv

The doors were typically forged and much less were wooden. Ensemble of entrance portals was often supplied with fanlight placed above the door (buildings in 5 and 6 and 8 and 9 Acad. Bogomoltsa str., 1 and 2 and 3 and 4 Acad. Pavlova str., 7 Bohuna str., 60 Hen. Chupryny str., 6 Doncova str., 46 Kopernika str.) (fig. 3, 4). Unlike the entrance portals, window frames were usually wooden.



Fig. 3. Rectangular portal with a curved fanlight (5 Bohomoltsya str.). Source: il. T. Kazantseva, S. Ponkalo



Fig. 4.: Portal with a round fanlight (4 Grygorenko sq.). Source: il. T. Kazantseva, S. Ponkalo

Window frames mainly were decorated with plant motifs, smooth flowing lines of stylized flowers, leaves and stems of plants (6 Acad. Bohomoltsia str., 6 Shevchenka Ave, 3 Acad. Pavlova str.). In the frames of geometric forms also volutes and keystones occur. Classic cornices with the broken pediment and keystone in the middle were placed above the windows (38 Chupryny str.) (fig. 5-8).



Fig. 5. Arch window (4 Shevchenka Ave). Source: il. T. Kazantseva, S. Ponkalo



Fig. 6. Attic round window (4 Grygorenka pl.). Source: il. T. Kazantseva, S. Ponkalo



Fig. 7. Rectangular window with round frame (3 Bohomoltsa str.). Source: il. T. Kazantseva, S. Ponkalo



Fig. 8. Horseshoe window with curved frame (3 Pavlova str.). Source: il. T. Kazantseva, S. Ponkalo

Bow windows, balconies and brackets have become the most distinct structural elements of façade decoration. Supporting elements (brackets and consoles) have obtained almost sculptural forms, which corresponded to the synthesis of architecture and sculpture in Secession. Additionally, natural motifs - cones, stems of plants, flowers and geometric shapes (circles, squares) were also used. Often balcony's platform has been made laconic, while most attention was given to fencing. Generally, the shape of balcony platforms and fencing elements is unique, made specifically for each building, and sometimes for each floor (e.g. facades of buildings in 14-16 Levytskoho str.). Often architects followed the architectonic approach, namely on the second floor entirely they put stone balconies (which one perceives as the heaviest both visually and physically), and on the upper floors architects included a blacksmith to facilitate the construction. Based on research of buildings facades made by I. Levynskyy's Company balconies can be divided into three types: a) with forged brackets and fence (3 Acad. Pavlova str., 1-3 Hotynska str.) (fig. 9), b) stone brackets and wrought fence (11 Acad. Bohomoltsia str.), c) stone brackets and stone fences (second floor on the 8-10 Doncova str.), d) stone brackets and fence with stone and forged elements (8 Acad. Bohomoltsia str.) (fig.10-12). In the last case several solutions of balcony platform fencing are possible. The most interesting of them is the transformation of upper part of the bracket into the stone columns which were placed between wrought iron fences (1 Acad. Pavlova str.).



Fig. 9. Balcony with forged brackets and fence (1-3 Hotynska str.). Source: il. T. Kazantseva, S. Ponkalo



Fig. 10. Balcony stone brackets and stone fences (5 Bohomoltsa str.). Source: il. T. Kazantseva, S. Ponkalo



Fig. 11. Balcony stone brackets and wrought fences (15 Doroshenka str.). Source: il. T. Kazantseva, S. Ponkalo



Fig. 12. Balcony stone brackets and wrought fences (38 Chuprynki str.). Source: il. T. Kazantseva, S. Ponkalo

An integral feature of Lviv Secession is bay windows that provide facades more additional expressive volume and silhouette. Sections with bay windows often were compositional dominant of the façade due to attractive attic or entablature. For example, the upper part of bow window could end with volutes and keystone in the middle (2-4 Hryhorenka sq.), or have a complex configuration decorated with floral molding with stems and flowers (70 Lychakivska str.). Bow windows are often supported by brackets decorated by circle ornaments which are typical for Secession.

Attics and cornices have gained the paramount importance on the buildings' facades made by I. Levynskyy's Company. Deeply connected with historicism, Lviv Secession spirit was realized mainly in the final part of facades where wavy lines and planes were used. Secession architects were not trying to display architectonics on the facade by applying heavy volumes on the first floor and by gradual alleviation of molding's and sculpture's relief on the upper floors. The architecture and art of the Modern Style were characterized by admiration and imitation of nature (through stylization). Therefore, the composition of the most of the Secession facades is based on the rules of nature, similar to irregular pulsating rhythm of biological processes in which tension increases upwards. Cornices play a significant role in the façade's architecture. On the facades of buildings made by I. Levynskyy's Company cornices were used mostly above the first floor, as well as cornices under and over the windows. The profile of all this elements was simplified (often rectangular). Much complicated in design was entablature cornice, which was consisted of a number of architectural moldings (often non-classical) and supported by corbels or wrought iron brackets (fig. 13, 14).



Fig. 13. Cornice with majolica (5 Boguna str.). Source: il. T. Kazantseva, S. Ponkalo



Fig. 14. Cornice with leaf brackets (15 Doroshenka str.). Source: il. T. Kazantseva, S. Ponkalo

On the facades of I. Levynskyy's Company such schemes of attic composition were spread, as: a) covering of the attic plane with ceramic tiles entirely (12 Doncova str.) or as an archivolt (2-4 Hryhorenka sq.); b) attic's decoration by female or male masks (4 Briullova str., 4 Acad. Bogomoltsia str.); c) molding with floral forms (4 Shevchenka Ave., 70 Lychakivska str.) or historical motifs (44 Rustaveli str.), combination of columns and wrought iron fences (3 Acad. Bohomoltsia str., 38 Hen. Chupryny str.); d) covering with plaster texture (buildings in 42 and 44 Rustaveli str., 3 Hotynska str.). Cornices on facades of I. Levynskyy's Company buildings can be divided into: a) profiled (buildings in 3 and 6 Acad. Bohomoltsia str.), b) with console ledges or corbels (5 Bohuna str., 38 Hen. Chupryny str.), c) with dentils (3 Acad. Pavlova str., 17-19 Kotlyarevskoho str., 2 Bandery str.), d) with Egg-and-dart molding (2 Hlibova str., 4 Briullova str.) (fig. 15-22).



Fig. 15. Attic with majolica (10 Doncova str.). Source: il. T. Kazantseva, S. Ponkalo



Fig. 16. Attic with floral molding (14 Doncova str.). Source: il. T. Kazantseva, S. Ponkalo



Fig. 17. Attic with mask and molding (4 Bohomoltsa str.). Source: il. T. Kazantseva, S. Ponkalo



Fig. 18. Attic with mask (4 Bryulova str.). Source: il. T. Kazantseva, S. Ponkalo



Fig. 19. Trapezoid attic with majolica tiles (8-10 Dontsova str.). Source: il. T. Kazantseva, S. Ponkalo

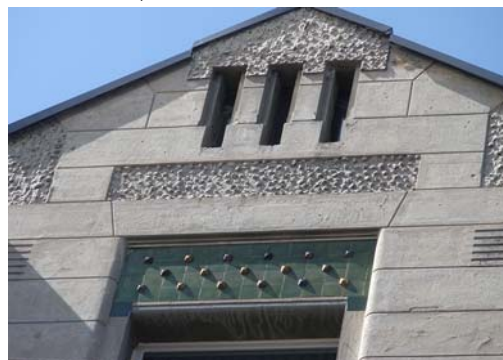


Fig. 20. Triangular attic with majolica tiles and textured plaster (1-3 Hotynska str.). Source: il. T. Kazantseva, S. Ponkalo



Fig. 21. Curved shaped attic (5 Bohomoltsa str.). Source: il. T. Kazantseva, S. Ponkalo



Fig. 22. Attic as a balustrade (15 Doroshenka str.). Source: il. T. Kazantseva, S. Ponkalo

Decorative elements of buildings' facades made by I. Levynskyy's Company are described below.

Rustication. The composition of most building facades of I. Levynskyy's Company is based on the rules of nature, namely on the growth of flower. Therefore, the area of the first floor as a rule was finished in a very restrained manner, opposite to the upper floors, heavily decorated. Often, rustication was the only decoration of the first, and sometimes second, floors. Secession rustication differed by its flatness. Often were used banded rustication (buildings in 42-44 Rustaveli str., 11A Hen.Chupryny str.), Greek rustication (5 Bohuna str., 14 Doncova str.), narrow Greek rustication (12 Doncova str., 38 Hen.Chupryny str.); belted (14 Doncova str., 1-3 Hotynska str., 6 Doncova str., 60 Hen.Chupryny str., 15 Doroshenka str., 4 Acad. Pavlova str.) and the imitation of the pseudo-isodomic masonry (4 Shevchenka Ave., 8-10A Doncova str.) (fig. 23, 24).



Fig. 23. Gradations of rustication (15 Doroshenka str.). Source: il. T. Kazantseva, S. Ponkalo



Fig. 24. Banded rustication (7 Nalyvajka str.). Source: il. T. Kazantseva, S. Ponkalo

Molding has received the greatest development in early Secession (till 1908), when New Style architects were searching for a new ornament. So facades of I. Levynskyy's Company were covered with floral ornaments, prototypes of which were the native plants (chestnut, linden, oak, chamomile, poppy and chrysanthemum). Molding of the late period of Secession was characterized by stylization of ornamental elements of previous architectural styles (garlands, oval elements of Ionic order, cartouches, volutes, etc.). Almost plane ornament was often located on high-relief background, which increased importance of molding and visually made the ornament more planar.

Based on analysis of buildings' facades made by I. Levynskyy's Company principles of location of molding decoration are defined (fig. 25-30), as:

- a) Above the entrance portal: - as a keystone (buildings in 5 and 6 and 8 Acad. Bohomoltsia str., 2-4 Hryhorenka str.), as floral motifs (1 and 2 Acad. Pavlova str., 6 Bohuna str., 5 Acad. Bohomoltsia str.);
- b) Above windows: - as pediments (38 Hen.Chupryny str., 108 Konovaltsia str., 2-4 Hryhorenka str.); as a keystone (6 Bandery str., 2-4 Hryhorenka sq.); as a mask (38 Hen.Chupryny str.); as friezes (6 Bohuna str., 2 Hlibova str., 6 Briullova str.);
- c) Under windows: - as a recessed panel (buildings 4 and 5 and 6 and 8 Acad. Bogomoltsia str., 4 Briullova str., 2 and 4 and 6 Bandery str.);
- d) Between windows - in the form of friezes and recessed panels (6 Bohuna str., 4 Bandery str., 3 Acad. Bogomoltsia str.);
- e) On the frieze between floors or under cornices (60 Hen. Chupryny str., 6 Bohuna str., 6 Briullova str.).



Fig. 25. Molding between windows (1 Pavlova str.).
Source: il. T. Kazantseva, S. Ponkalo



Fig. 26. Molding with neoclassic volutes under windows (2 Bandery str.)



Fig. 27. Molding on the attic (2 Hlibova str.). Source: il. T. Kazantseva, S. Ponkalo



Fig. 28. Molding around the window and on the attic (14 Dontsova str.). Source: il. T. Kazantseva, S. Ponkalo



Fig. 29. Molding with plaster texture (1 Hotynska str.).
Source: il. T. Kazantseva, S. Ponkalo



Fig. 30. Molding with plaster texture (14 Dontsova str.). Source: il. T. Kazantseva, S. Ponkalo

Order forms historically appeared as framing structure of piers and beams. Afterwards, they became a decorative element. In ancient Rome there have been appeared the false order arcade which has kept the visual strength. In Secession architectural order entirely loses its illusory tectonics, gets flatness and decoration. On the buildings' facades made by I. Levynskyy's Company canonical order forms were modified and reinterpreted. In the early period of Secession classic capitals were replaced by secessionist ornament in the form of circles and strips (8 Bohomoltsya str.), masks with floral ornament (14-16 K. Levyskoho str., 2 Hlibova str., 2-3 Acad. Pavlova str., 6 Acad. Bohomoltsia str.), bouquet of chestnut leaves (4 Acad. Pavlova str., 9 Nalyvayka str., 3 Acad. Pavlova str., 5 Acad. Bohomoltsia str.), cartouche (1 Acad. Pavlova str., 2-4 Hryhorenka sq., 15 Doroshenka

str.), wreath (8 Acad. Bohomoltsia str., 4 Acad. Bohomoltsia str., 14-16 K. Levytskoho str., 70 Lychakivska str.). The height of capitals increases, the composition becomes more complicated, such as a wreath attached to one another with ribbons. In several cases body of molded pilasters is absent, pedestal is mostly disappeared too, but in few cases is preserved (fig. 31-34).



Fig. 31. Modified order forms (8 Bohomoltsia str.). Source: il. T. Kazantseva, S. Ponkalo



Fig. 32. Capital-mask (3 Pavlova str.). Source: il. T. Kazantseva, S. Ponkalo



Fig. 33. Modified pilasters (70 Lychakivska str.). Source: il. T. Kazantseva, S. Ponkalo



Fig. 34. Modified pilasters (7 Nalyvajka str.). Source: il. T. Kazantseva, S. Ponkalo

Classical forms have get stylization on the facades of rational Secession. Perfectly operating with an arsenal of classic order forms architects of I. Levynskyy's Company also admired the subtle game with classic tradition. So on the facades one can recognize stylized Romanesque columns (17-19 Kotlyarevskoho str.) and Ionic pilasters and columns (29 Svobody Ave, 60 Hen. Chupryny), as well as Corinthian (9 Dudayeva str.).

Majolica tiles. Finishing of the facade with majolica elements has spread in Ukraine since the late 80's of the 19th century, when majolica became a kind of visit card of "pittoresque" style. This interest, though with significant differences from the previous style, passed into the architecture of the 1st third of the 20th century. It became one of the favorite tricks of the I. Levynskyy's Company architects. The dominant majolica details on Secession facades are square ceramic tiles, which form best correspond with the proportional division of the secession decor and is coordinated with one of the definitions of secession as the art of the square. In folk tendency of Secession the location of majolica tiles on facade is largely correspond to the traditional decoration of the wall: a) on the frieze (4 and 6 Acad. Bogomoltsia str., 2-4 Hryhorenka sq.); b) over the windows (1 Acad. Pavlova str., 8 Doncova str., 70 Lychakivska str.); c) between the windows (3 Bohomoltsia str., 42 Rustaveli str., 5 Bohuna str.); d) on the attics (12 Doncova str.); d) over the entrance portal (6 and 12 and 14 Doncova str., 5 Bohuna str.).

Majolica tiles often are combined into the composition panels. The range of colors in a single-color (3 and 5 Acad. Bogomoltsia str., 5 Bohuna str., 12 Doncova str.) and two-

color panels was quite different. Blue, burgundy, purple and azure colors of the tiles were used very often, green, orange and yellow, which combined in "the chessboard" composition (5 Bohuna str., 2-4 Hryhorenka sq., 8-10 Doncova str., 11 Chuprynyky str.) were used more rarely. Sometimes "chessboard" panel intentionally was made of not two, but several tints related to each other (e. g. blue, cobalt, light and dark green). This picturesque method made the surface of majolica panels to be similar to painting and allowed to avoid monotony through alternating of the same colors. Tiles in ornamental panels on the facades of I. Levynskyy's Company combined in two ways – in thematic panels with free composition (1 and 2 and 3 Acad. Pavlova str., 70 Lychakivska str.), and in panel with metric repetitive elements of ornament (4 Acad. Bohomoltsia str.) (fig. 35-40).



Fig. 35. Majolica panels (70 Lychakivska str.). Source: il. T. Kazantseva, S. Ponkalo



Fig. 36. Majolica panels (5 Bohuna str.). Source: il. T. Kazantseva, S. Ponkalo



Fig. 37. Majolica panels (2 Pavlova str.). Source: il. T. Kazantseva, S. Ponkalo



Fig. 38. Majolica panels (4 Pavlova str.). Source: il. T. Kazantseva, S. Ponkalo



Fig. 39. Majolica panels (3 Pavlova str.). Source: il. T. Kazantseva, S. Ponkalo



Fig. 40. Majolica panels (1 Pavlova str.). Source: il. T. Kazantseva, S. Ponkalo

CONCLUSIONS

1. Based on analysis of the field studies results of Secession buildings made by I. Levynskyy's Company in Lviv façade's decoration was classified on structural and decorative elements, their main types and subtypes were found.
2. For main structural elements of façade's decoration of I. Levynskyy's Company Secession buildings portals and windows, bow windows, balconies and brackets, cornices and attics were attributed. Accordingly façade's decorative elements are rustication, moldings, order forms, majolica.
3. Character and the features of location of decoration of all types which were used on Secession buildings' facades made by I. Levynskyy's Company were determined.

BIBLIOGRAFIA

- [1] Biriulow, J. (1993) *Secesja we Lwowie*, Wydawnictwo Krupski i S-ka, Warszawa, 256 s.
- [2] Curl, J.S. (1999) *Dictionary of Architecture*, Oxford University Press, Oxford, 256 s.
- [3] Kazancewa, T. (2000) "Faktury elewacji kamienic lwowskich z przelomu XIX i XX wieku", w: *Architectus*, nr 1(7), Oficyna Wydawnicza Politechniki Wroclawskiej, Wroclaw, 107-113 s.
- [4] Morant, H. (1981) *Historia sztuki zdobniczej*, Arkady, Warszawa, 608 s.
- [5] Wallis, M. (1967) *Secesia*, Arkady, Warszawa, 343 s.
- [6] Zshuk, I. (2010) *Lviv Levynskogo. Misto i budivnychyj*, Lviv.
- [7] Kazantseva, T. (2011) Attyk ta antablement u Ivivskij secesij, w: *Visnyk NU Lvivska Politechnika „Architectura”* "Landshaft dachiv istorychnoho centru mista: problema zberezshennya I regeneracii", nr 716, Vydavnyctvo NU Lvivska Politechnika, Lviv, p. 128-134.
- [8] Kazantseva, T. (2010) Do pytannia rozvytku architekturnoho dekoru na fasadach Ivivskych sporud, w: *Visnyk NU Lvivska Politechnika „Architectura”*, nr 674, Vydavnyctvo NU Lvivska Politechnika, Lviv, 140-147 s.
- [9] Kazantseva, T. (2009) Majolika na fasadach Ivivskych sporud u styli pittoresk. Typologichnyj ta kompozycijnyj analiz naturnych doslidzen, w: *Studij mystectvoznavchi*, nr 1, Vydavnyctvo IMFE, Kyjv, 51-66 s.
- [10] Kazantseva, T. (2010) Majolika na fasadach Ivivskych sporud u styli secesij. Analiz typolohij, stylistyky ta kompozycij na bazi naturnych doslidzshen, w: *Studij mystectvoznavchi*, nr 1, Vydavnyctvo IMFE, Kyjv, 39-52 s.
- [11] Noha, O. (2009) *Ivan Lewynskij: architekt, pidpryjemets, mecenas*. Tsentr Yewropy, Lviv.

AUTHOR'S NOTE

Tetyana Kazantseva is an architect, Ph.D, Associate professor of Department of Design and Architecture Basics and Department of Urban Planning, Institute of Architecture, Lviv Polytechnic National University. Principal sphere of her scientific research is: facades of historic buildings (texture, color, decorum, stylistic analysis), polychrome techniques of facades and interiors of architectural monuments, bionic principles of space and object environment; historic urban villa development, urban sketches. E-mail: enltexa@hotmail.com

Solomiya Ponkalo is a designer, magister, assistant of Department of Design and Architecture Basics, Institute of Architecture, Lviv Polytechnic National University. Principal sphere of her scientific research is: classification of decorum of Lviv buildings facades in Modern Style, decorum of facades and interiors designed by I. Lewynskij bureau, investigations of historic interiors (aspects of composition and style). E-mail: ponkalo-lesia@ukr.net